

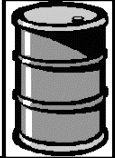






Printed copies are uncontrolled

| | | |
|-----------------------------------|--|---|
| Product name: | BV Pulsera | |
| Identification code | 0718-094-001 | |
| Total weight (in Kg) | 510 kg (approximately; dependent on specific configuration) | |
| Producer/ Manufacturer | Name company: | Philips Medical Systems |
| | Address: | Veenpluis 6 |
| | Zip code: | 5684 PC Best |
| | Country: | Netherlands |
| | Electronic info: | http://www.healthcare.philips.com/us/about/sustainability/recycling/ |

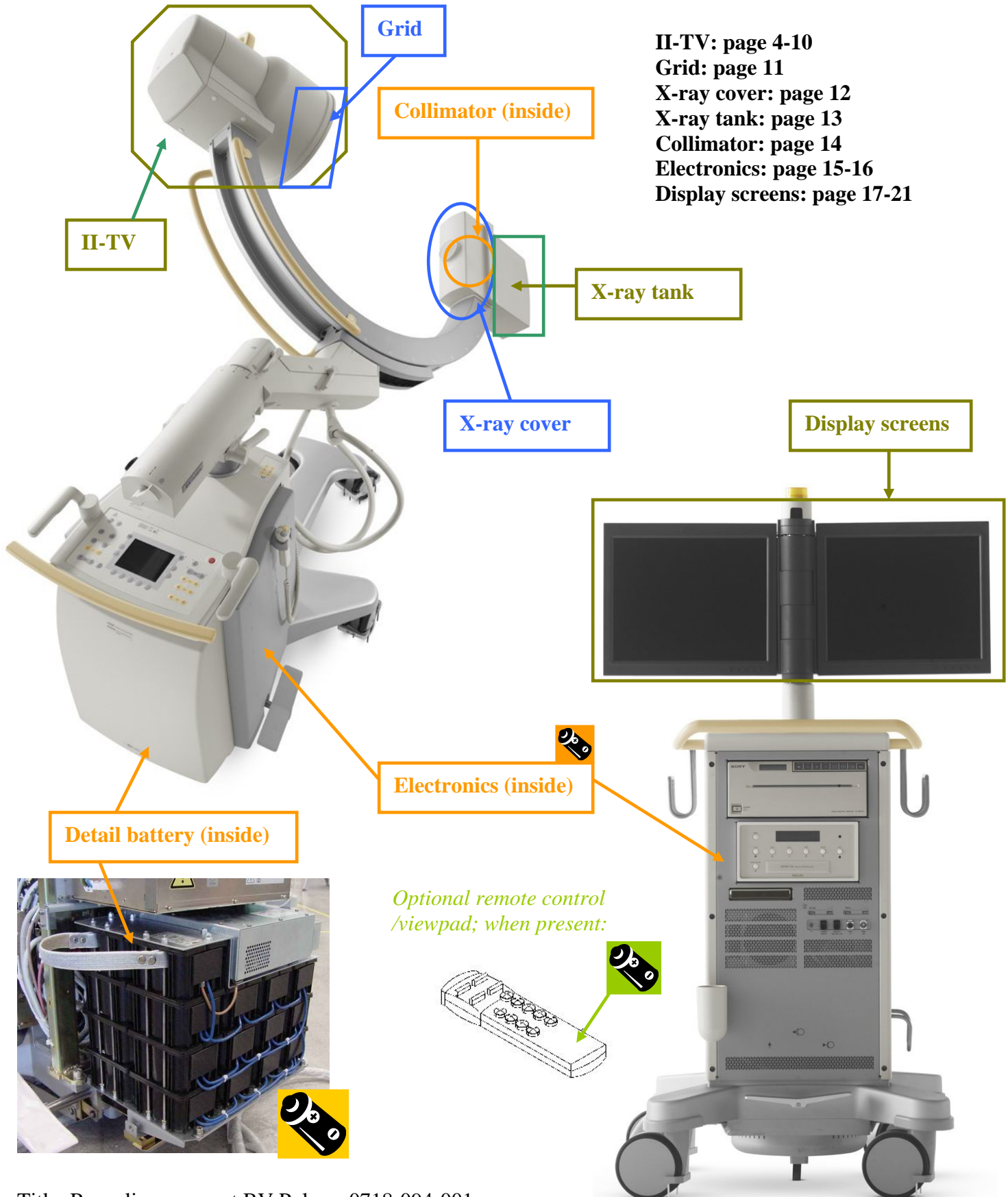
| Recycle Info | Items: | Location |
|---|--|--|
| Special attention  | <ul style="list-style-type: none"> Be aware of possibly contaminated system parts and materials! (biological hazard) For dismantling activities Treatment Facilities must consider the national requirements. For personnel that can come into contact with contaminated material, preventive measures pursuant to national requirements must be taken into account | System parts that were in the patient environment, and that were not disinfected |
| | <ul style="list-style-type: none"> Removal of units / weights can cause the system to tilt! | |
| | <ul style="list-style-type: none"> Removal of units / weights can cause unexpected movements of guidances! | |
| | <ul style="list-style-type: none"> Release of brakes can cause unexpected movements of guidances! Brakes cannot prevent unexpected movements due to the removal of units /weights! | |
| | <ul style="list-style-type: none"> High-voltage parts (e.g. capacitors) are marked with  | |
| | <ul style="list-style-type: none"> Before dismantling the vacuum II-Insert, drill a small hole to let air in the insert | II-TV (page 4-10) |
| | <ul style="list-style-type: none"> Vacuum glass tube of X-ray tank can implode! | X-ray tank (page 13) |
| Fluids / Gases  | Items: <ul style="list-style-type: none"> Oil | X-ray tank (page 13) |
| Batteries  | Type: Battery, 4x alkaline 1,5V [44 grams] (when option “remote control/viewpad” is present) |  (page 3) |
| | CR2032 3.0V Lithium coin cell of 3 gram CR2032 3.0V Lithium coin cell of 3.2 gram (when option “Dell PC” is present) | Electronics (page 15-16) |
| | To be Removed Pb - PbO - S.A.E. battery of 34,7 kg; containing lead (Pb), lead dioxide (PbO) and Sulfuric Acid Electrolyte (S.A.E.) |  (page 3) |

Printed copies are uncontrolled



| <p>Hazardous</p>  <p>To be Removed</p> | Substances: | Location |
|---|---|--|
| | Lead (Pb) for X-ray shielding | II-TV (page 4-10) Grid (page 11) X-ray cover (page 12) X-ray tank (page 13) Collimator (page 14) |
| | Lead (Pb) for soldering | Electronics (page 15-16) Display screens (page 17-21) |
| | Cadmium (Cd) + Beryllium Oxide (BeO) inside the II-Insert on the glass output window | II-TV (page 4-10) |
| | Beryllium Copper (BeCu) | Electronics (page 15-16) |
| | Mercury (Hg) in switch on printed circuit board for systems delivered before September 2006 | II-TV (page 4-10) |
| | Mercury (Hg) in LCD screens | LCD screens (page 17-21) |

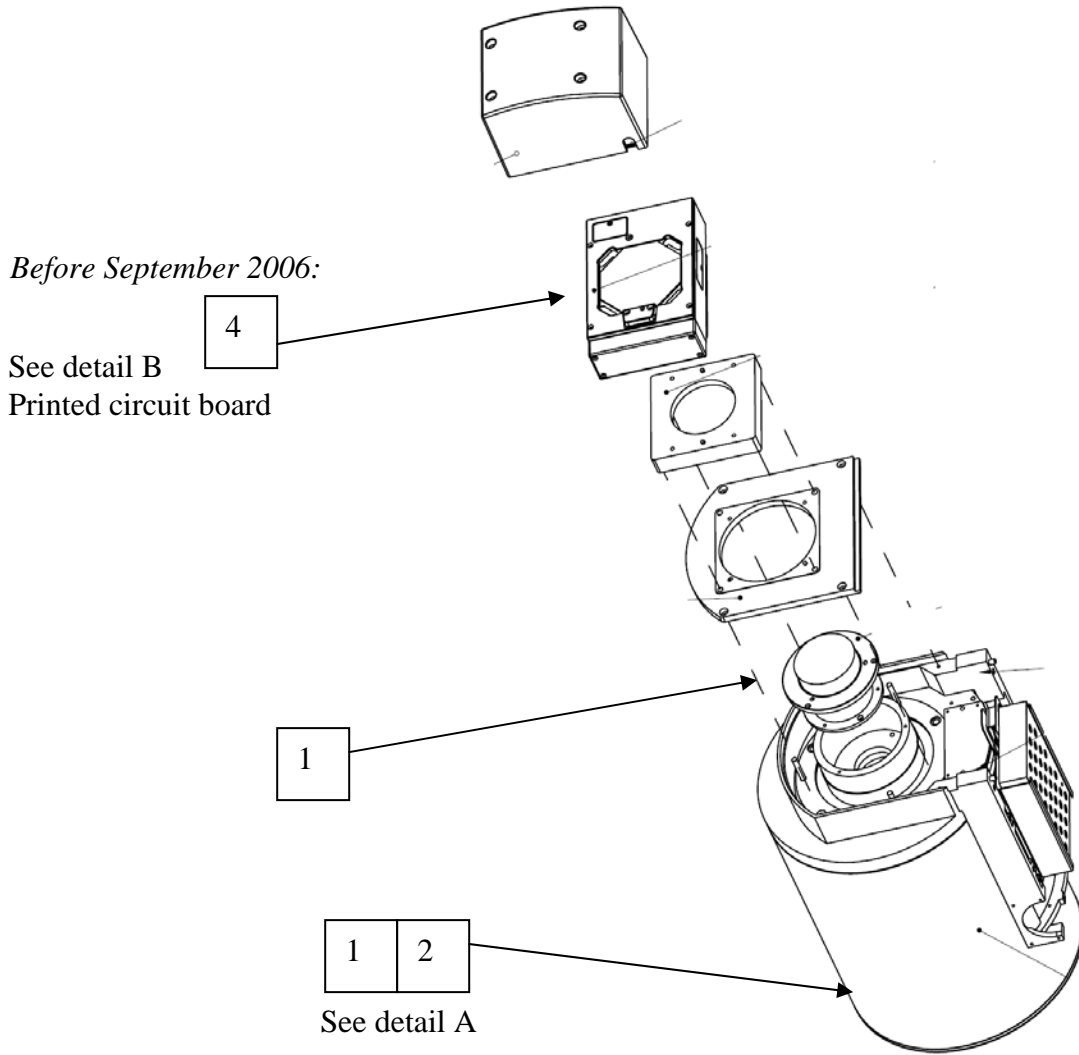
Note: to facilitate recycling, all plastic parts weighing > 50 grams are marked according to ISO11469 & ISO1043.

Printed copies are uncontrolled

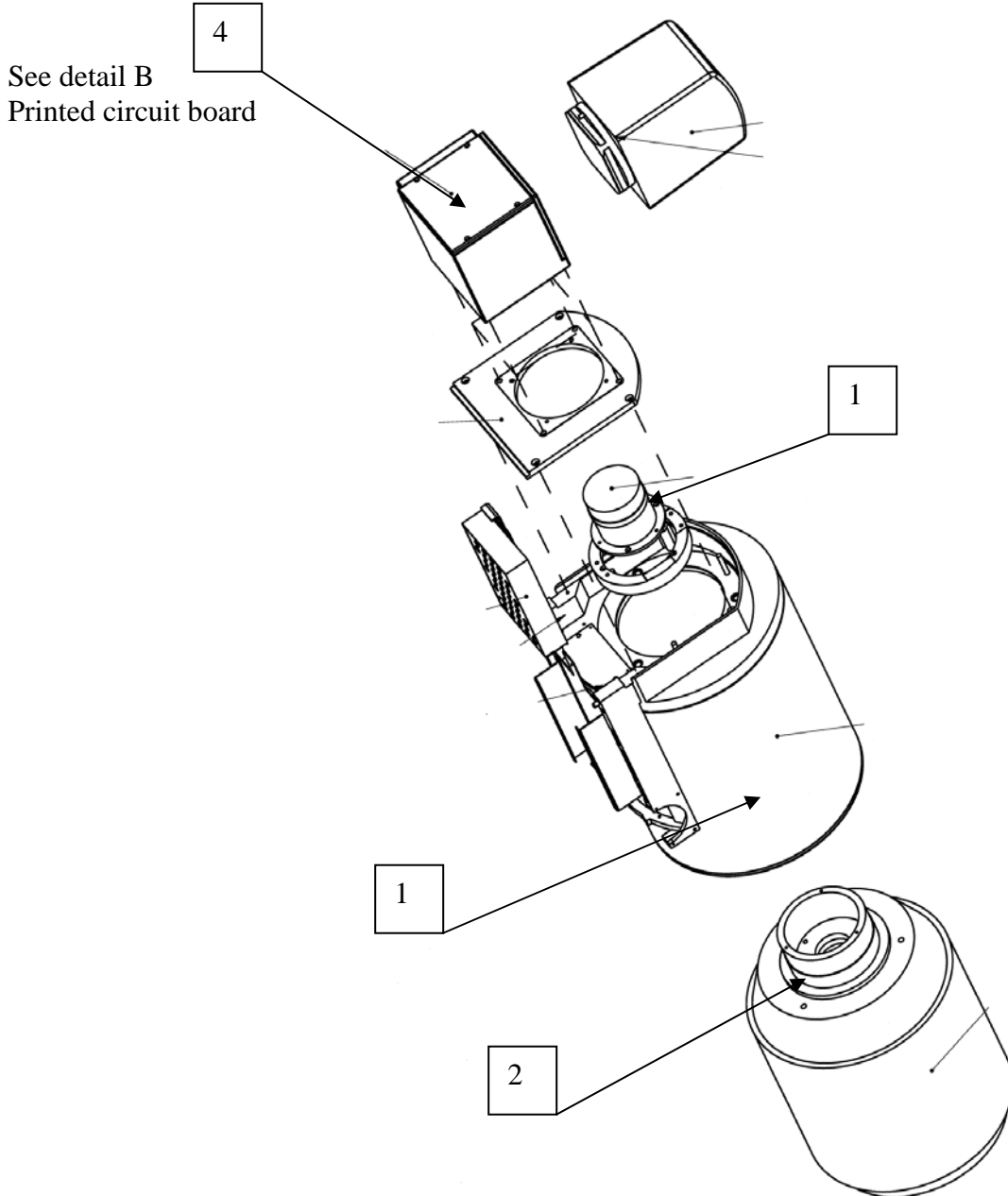


9" II-TV:

| Recycle Info | Items: | Location |
|---|---|-----------------|
| Special attention  | Before dismantling the vacuum II-Insert, drill a small hole to let air in the insert | |
| | | |
| Hazardous | Substances: | Location |
|  To be Removed | Lead (Pb) | 1, page 4-5 |
| | Cadmium (Cd) + Beryllium Oxide (BeO) inside the II-Insert on the glass output window | 2, page 4-5 |
| | Mercury (Hg) in switch on printed circuit board for systems delivered before September 2006 | 4, page 4-5 + 7 |

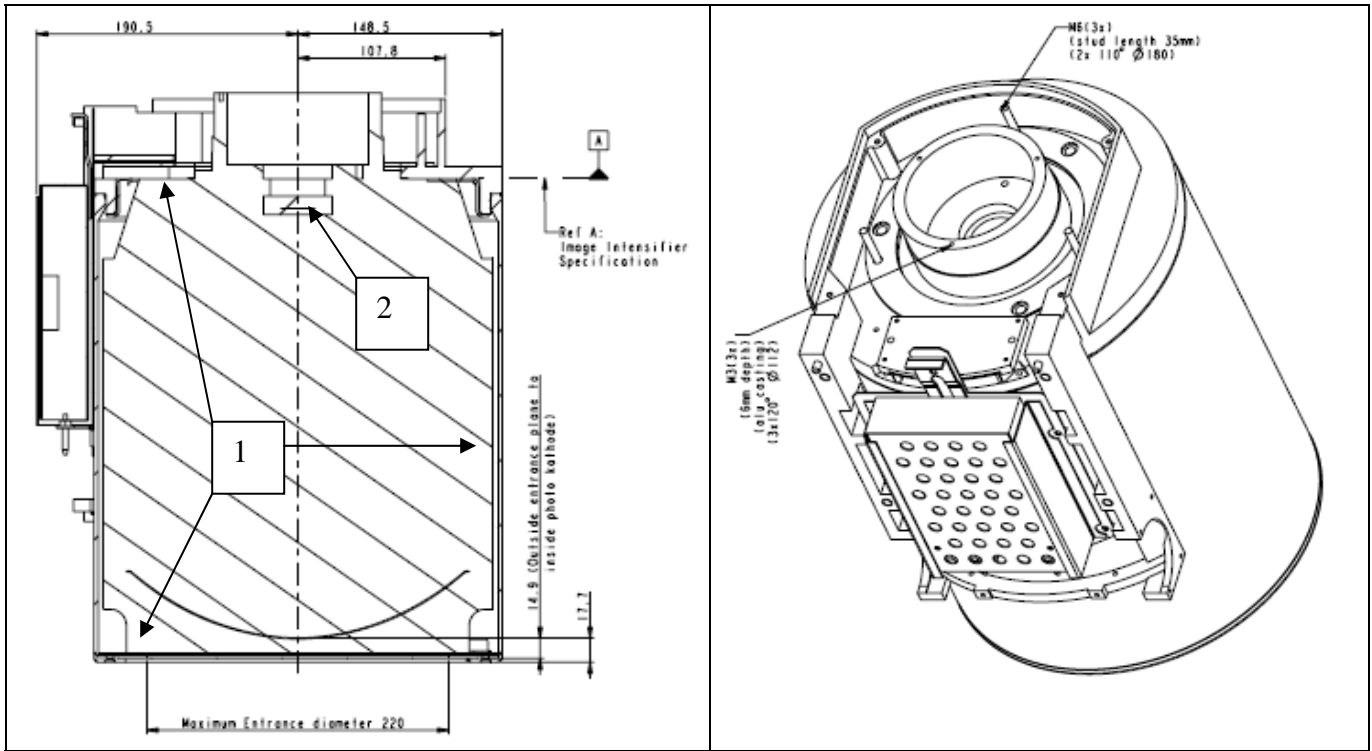


Before September 2006:



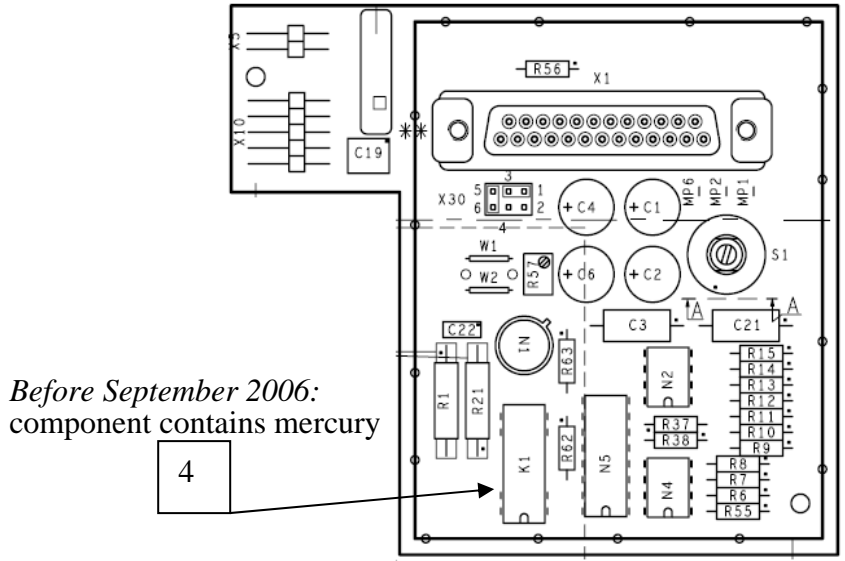
Printed copies are uncontrolled

Printed copies are uncontrolled

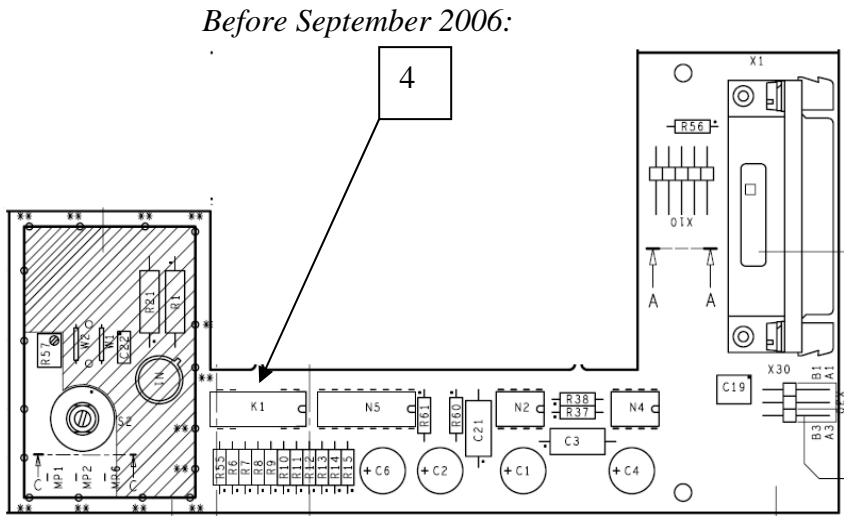


Detail A

Printed copies are uncontrolled





Detail B printed circuit board 4522 167 02681 up and including 4522 167 02687

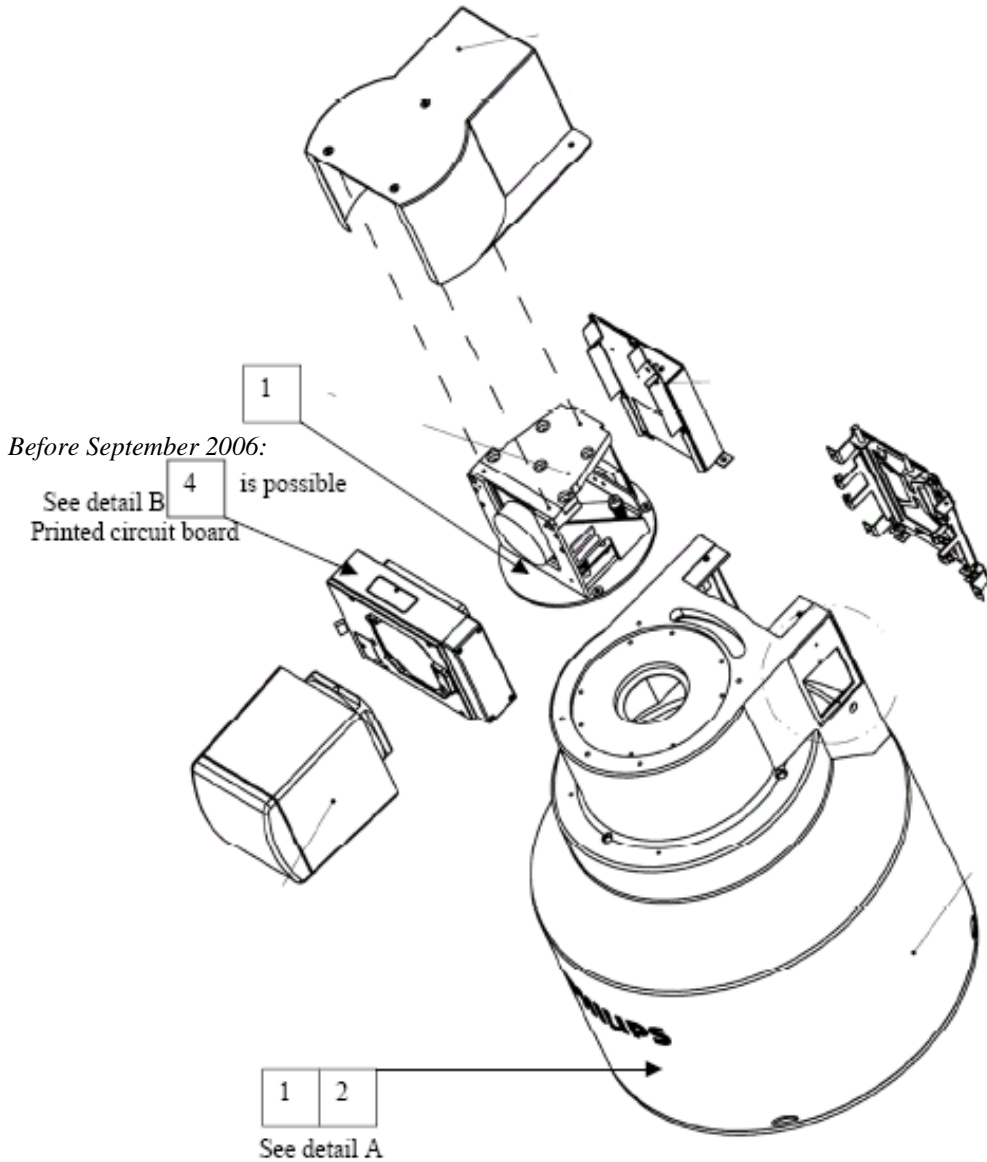


Detail B printed circuit board 4522 167 02431 up and including 4522 167 02439

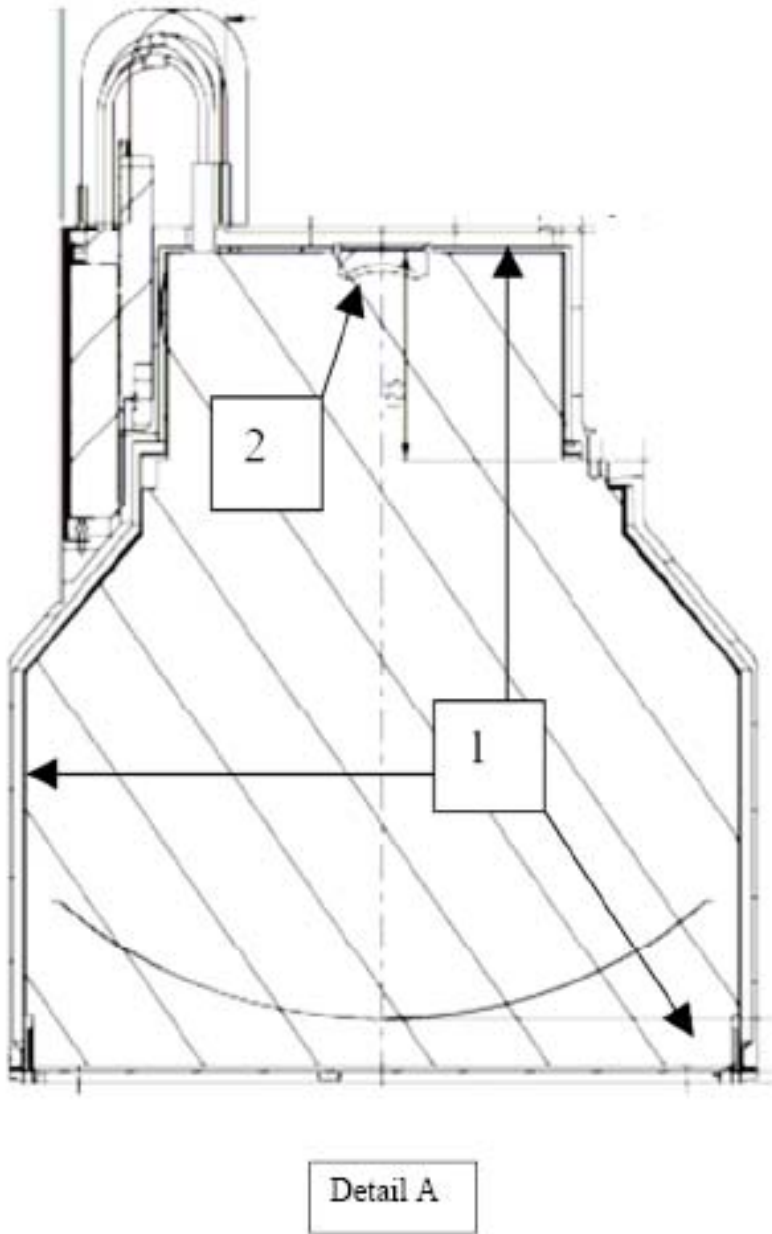
12" II-TV:

| Recycle Info | Items: | Location |
|---|---|----------------|
| Special attention  | Before dismantling the vacuum II-Insert, drill a small hole to let air in the insert | |
| | | |
| | | |
| Hazardous  To be Removed | Substances: | Location |
| | Lead (Pb) | 1, page 8-9 |
| | Cadmium (Cd) + Beryllium Oxide (BeO) inside the II-Insert on the glass output window | 2, page 8-9 |
| | Mercury (Hg) in switch on printed circuit board for systems delivered before September 2006 | 4, page 8 + 10 |

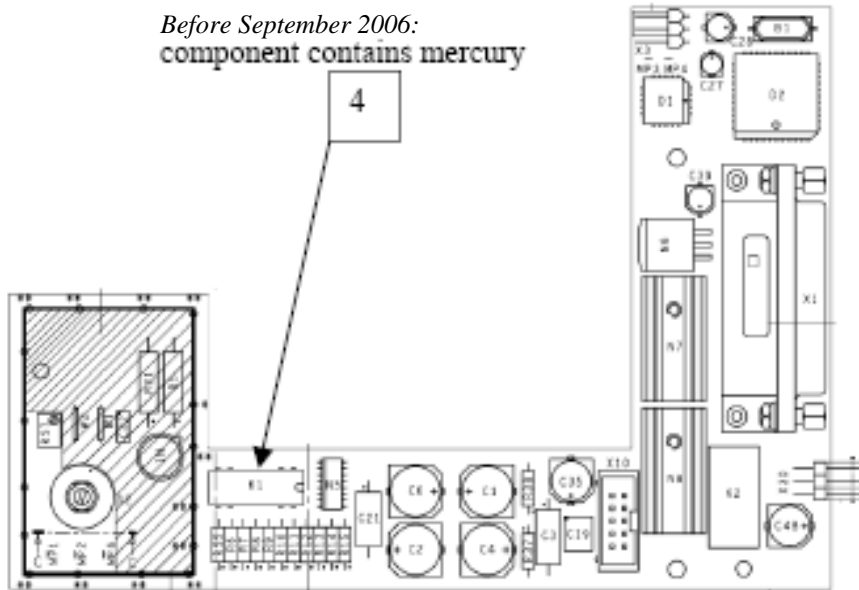
Printed copies are uncontrolled



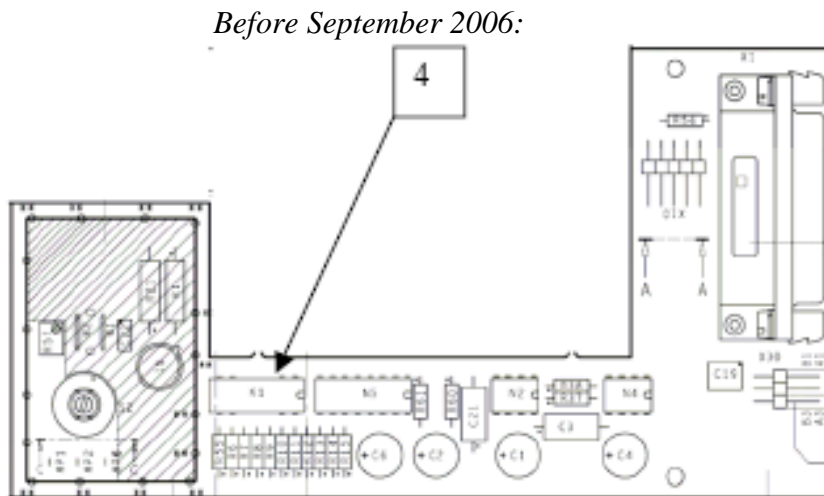
Printed copies are uncontrolled



Printed copies are uncontrolled




Detail B printed circuit board 4522 167 03471 up and including 4522 167 03475



Detail B printed circuit board 4522 167 02431 up and including 4522 167 02439

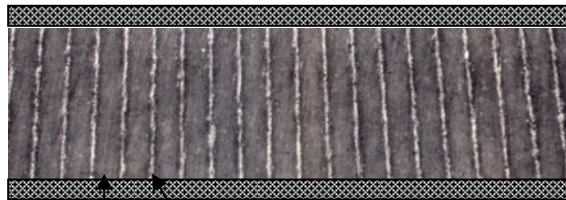
Grid:

| Hazardous | Substances: | Location |
|---|--------------------|-------------------------------|
|  To be Removed | Lead (Pb 99,5%) | Enclosed between cover plates |



Example larger and smaller grid (only 1 present in system)

Cross-section of grid:




Paper
Interspace
Material

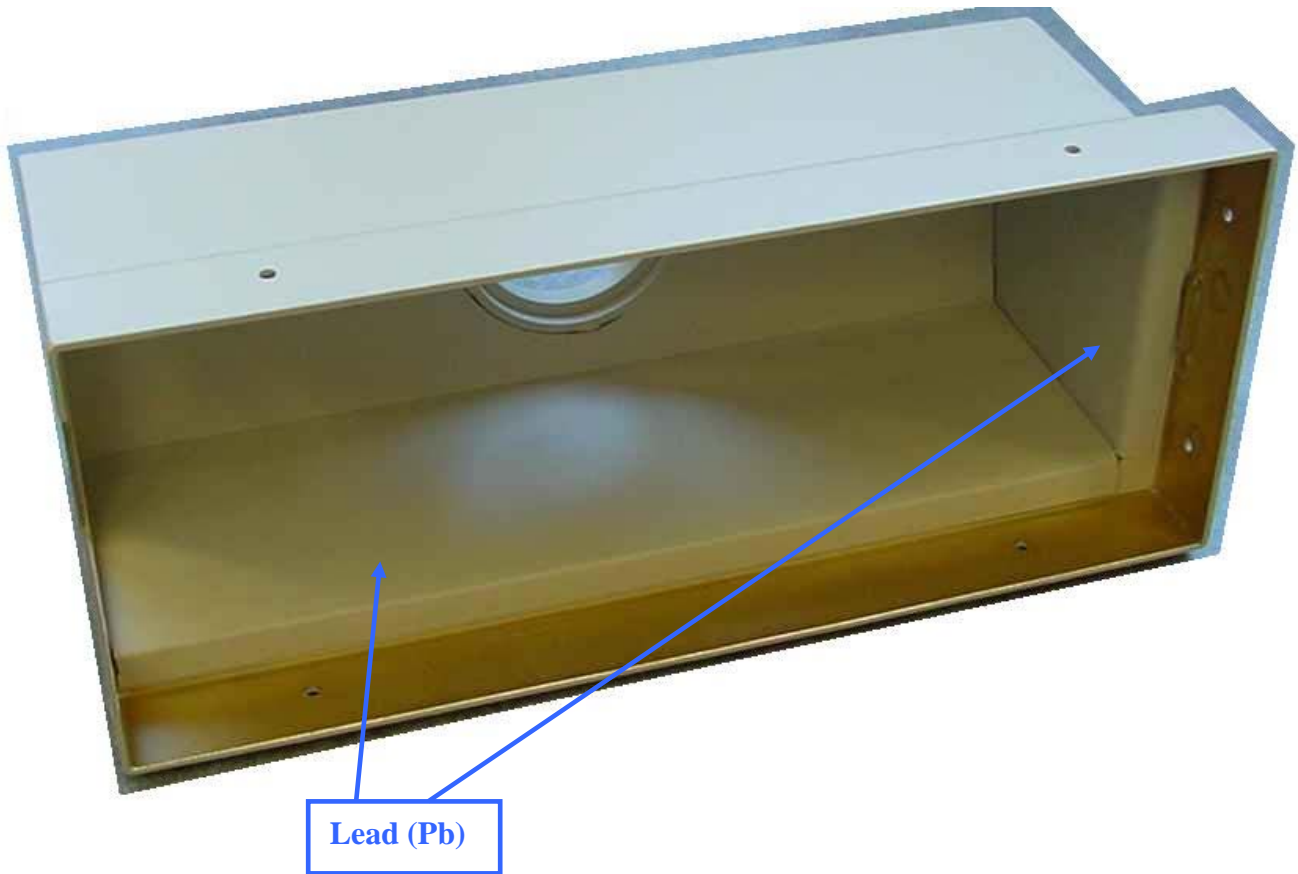
Lead

Printed copies are uncontrolled

X-ray cover:

| Hazardous | Substances: | Location |
|---|--------------------|----------------------------------|
|  To be Removed | Lead (Pb 99,5%) | Glued at inside; see photo below |

Printed copies are uncontrolled



X-ray tank:



LEAD sp. 2mm

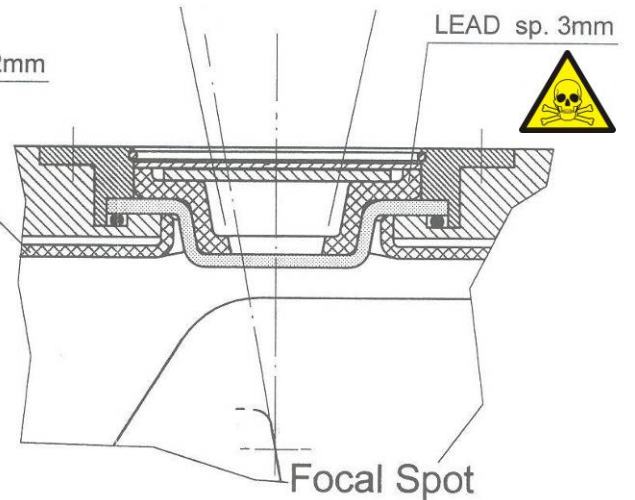


LEAD sp. 3mm

Vacuum glass tube can implode!

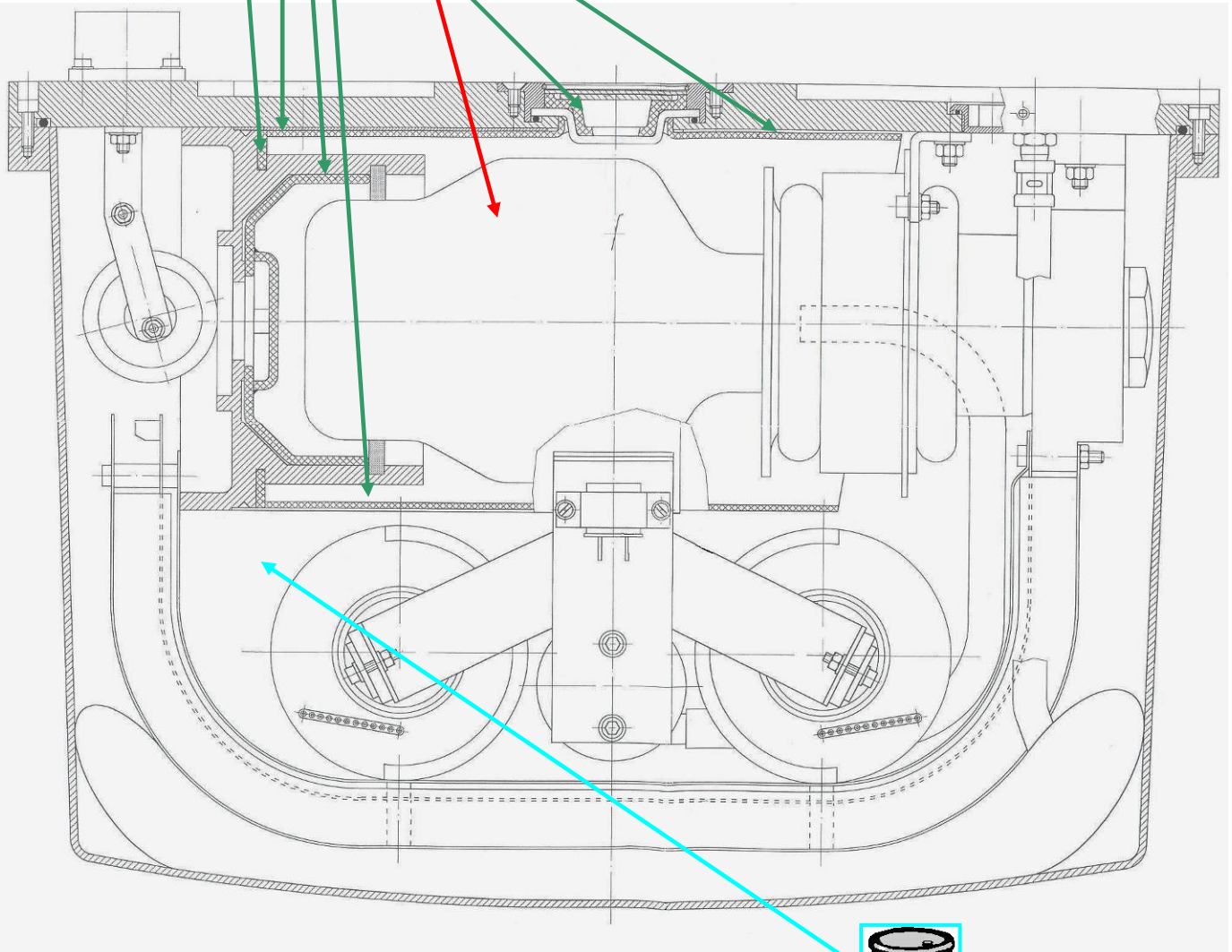


Lead (Pb)

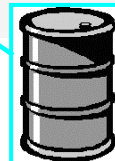


Focal Spot

Detail of X-ray tank



X-section of X-ray tank




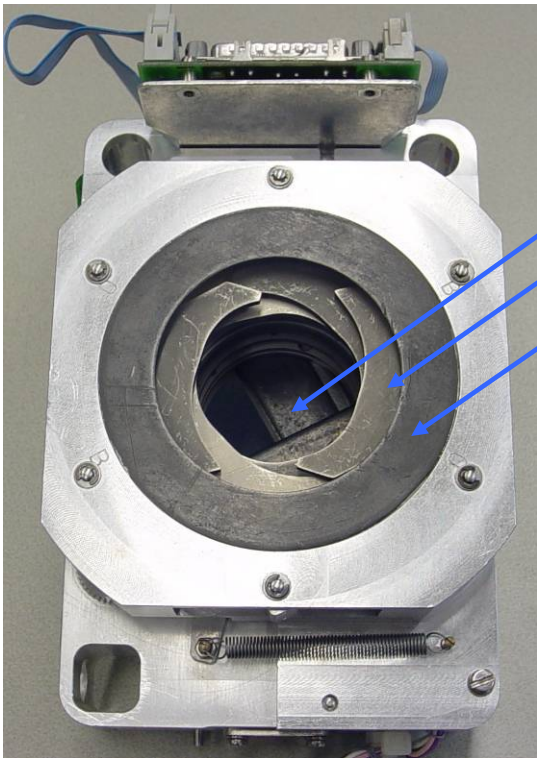
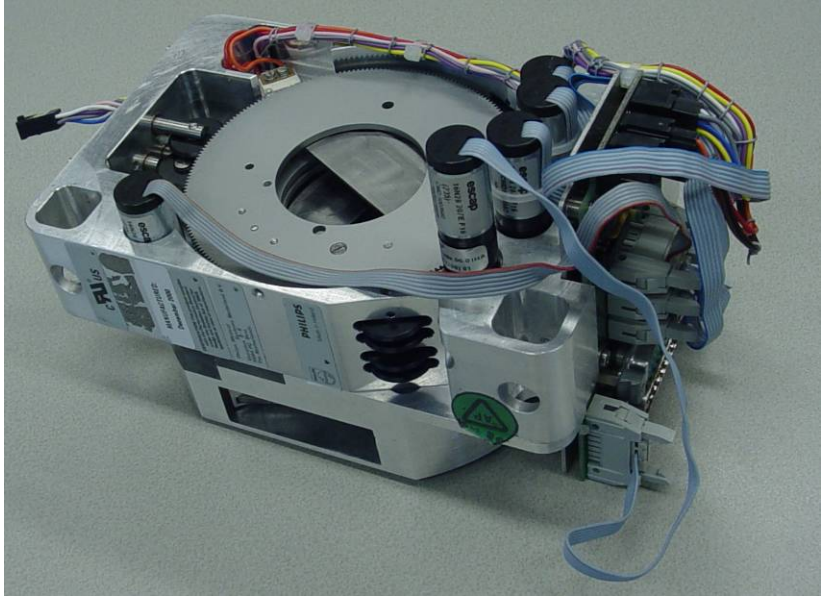
Oil

Title: Recycling passport BV Pulsera 0718-094-001
DocID: XDR054-090780

Printed copies are uncontrolled

Collimator:




| Hazardous  To be Removed | Substances: Lead (Pb 99,5%); 0,42 kg | Location Ring of lead, lead on shutters and wedges; See photo below. |
|---|--|---|
|---|--|---|

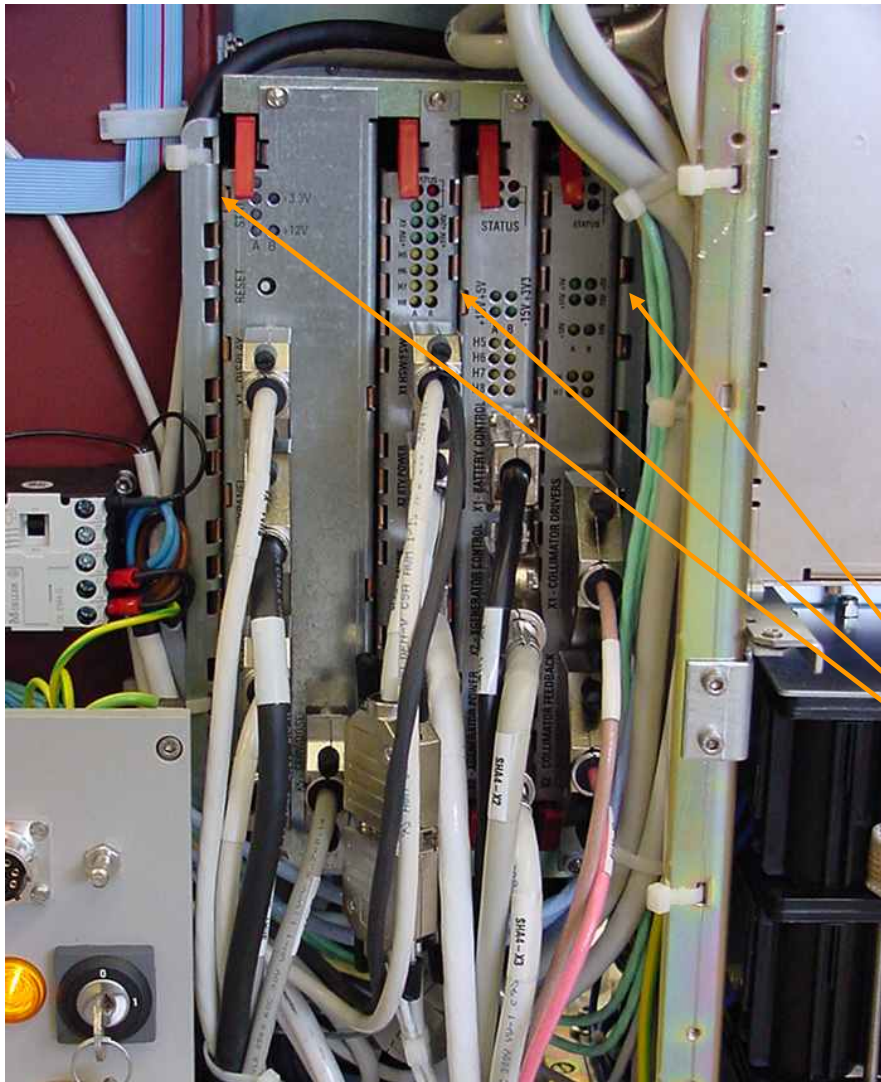


Lead (Pb)

Printed copies are uncontrolled

Electronics:

| | | |
|---|---|---|
| <p>Batteries</p>  <p>To be Removed</p> | <p>Type:</p> <p>1x CR2032, 3.0 Volt, 3.0 gram LiMnO₂</p> <p>CR2032 3.0V Lithium coin cell of 3.2 gram (when option “Dell PersonalComputer” [Philips-indication: Viewforum hardware] is present)</p> | <p>Location</p> <p>See picture on page 16</p>  <p>In Dell PC when present</p> |
| <p>Hazardous</p>  <p>To be Removed</p> | <p>Substances:</p> <p>BerylliumCopper (BeCu)</p> <p>Lead (Pb) is present in the soldering of some PCBs</p> | <p>Location</p> <p>Contact springs between hardware-racks; see photo below.</p> <p>PCBs (PrintedCircuitBoards)</p> |

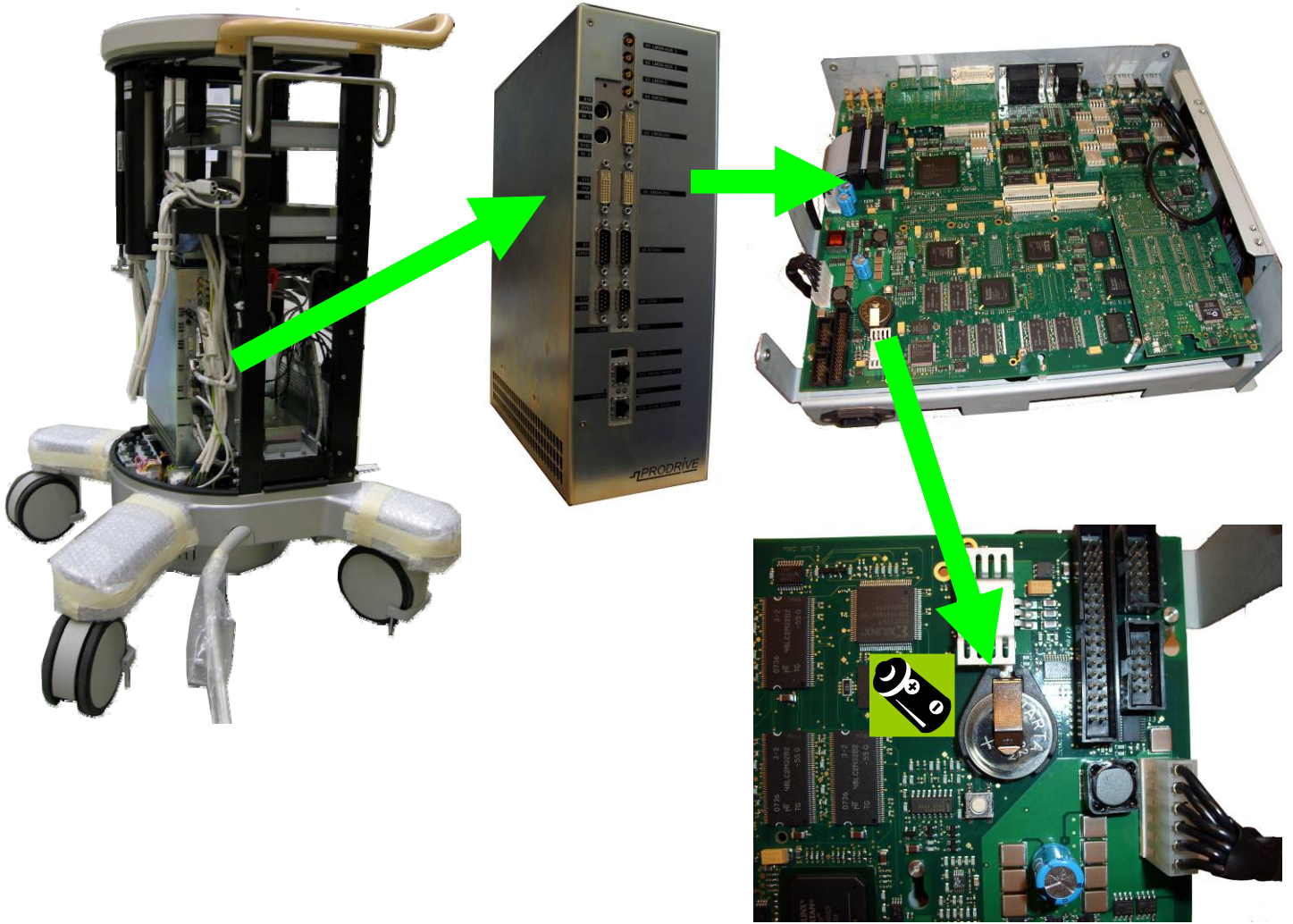


BerylliumCopper (BeCu) contact springs

Printed copies are uncontrolled

Title: Recycling passport BV Pulsara 0718-094-001
 DocID: XDR054-090780


Printed copies are uncontrolled



Display screens:

FOLLOWING PAGES PROVIDE INFORMATION ON VARIOUS SCREENS POSSIBLY PRESENT IN THE SYSTEM.

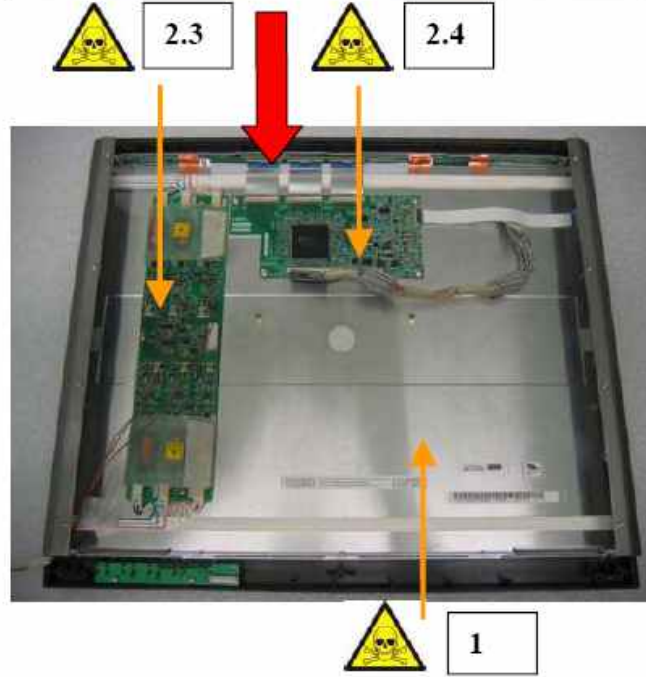
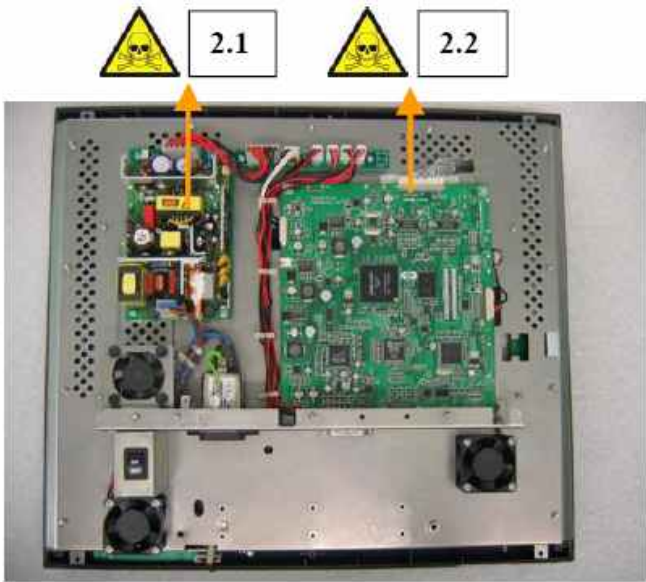
LCD screen FIMI MCL180-L / 9919-320-5089x | PAGE 1 of 2

| Hazardous  To be Removed | Substances: | | Location |
|---|--|--|-------------------|
| | Type | Quantity | |
| | Cd | 0 | |
| | Hg | 21 mg max. (*) | Next figure (1) |
| | Pb | Lead is present in the soldering process of PCBs | Next figure (2.x) |
| | Cr ⁶⁺ | 0 | |
| | PBB | 0 | |
| | PBDE | 0 | |
| | (*) Mercury is present in Backlight lamps: 3.5mg x 6 lamps | | |

Printed copies are uncontrolled

LCD screen FIMI MCL180-L / 9919-320-5089x | PAGE 2 of 2

Printed copies are uncontrolled




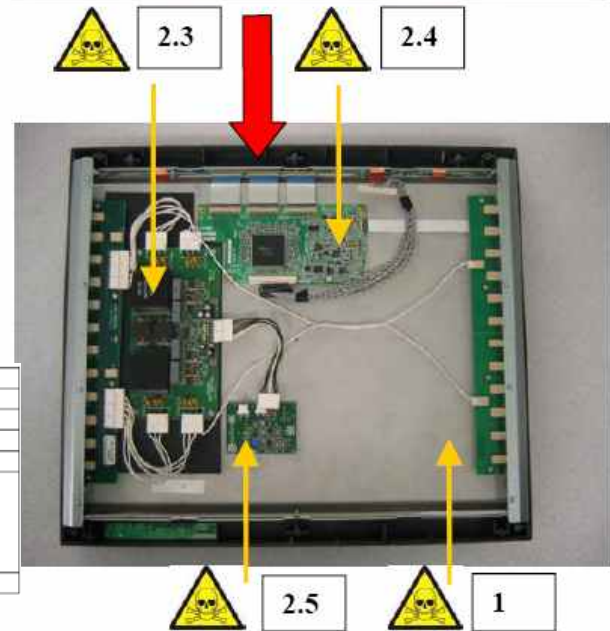
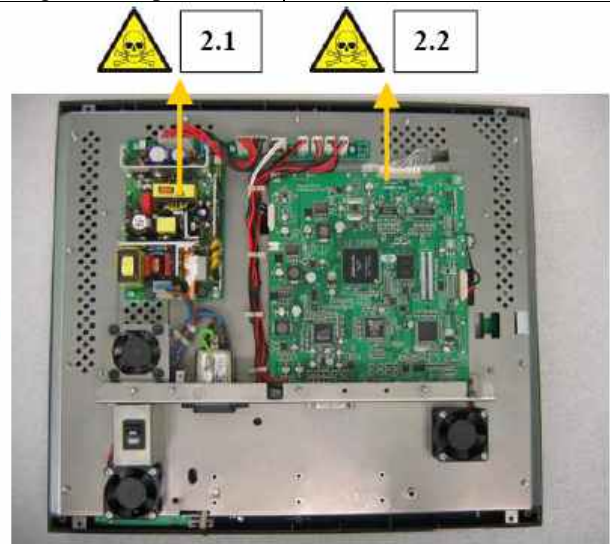
| Material | | |
|---|--|---|
| Fe | 6.0 kg | (3.4 kg in the pedestal) |
| Al | 0 | - |
| Cu | 0.1 kg | Cables |
| Plastics | 1.5 kg | (0.4 kg in the pedestal) |
| Boards (S² > 10cm²) | 96 cm ² / 260 g 320 cm ² / 230 g 144 cm ² / 66 g 72 cm ² / 54 g | S.M.P.S. (item 2.1 in the picture) Logic Board (item 2.2 in the picture) Inverter (item 2.3 in the picture) LCD Driver (item 2.4 in the picture) |
| CD | 3 kg | 18" |

Title: Recycling passport BV Pulsara 0718-094-001
 DocID: XDR054-090780

LCD screen FIMI MCL180-HB / 9919-320-5088x

Printed copies are uncontrolled


| Hazardous  To be Removed | Substances: | | Location |
|---|------------------|--|--------------------|
| | Type | Quantity | |
| | Cd | 0 | |
| | Hg | 36 mg max. (*) | Figure below (1) |
| | Pb | Lead is present in the soldering process of PCBs | Figure below (2.x) |
| | Cr ⁶⁺ | 0 | |
| | PBB | 0 | |
| | PBDE | 0 | |
| (*) Mercury is present in Backlight lamps: 3mg x 12 lamps | | | |

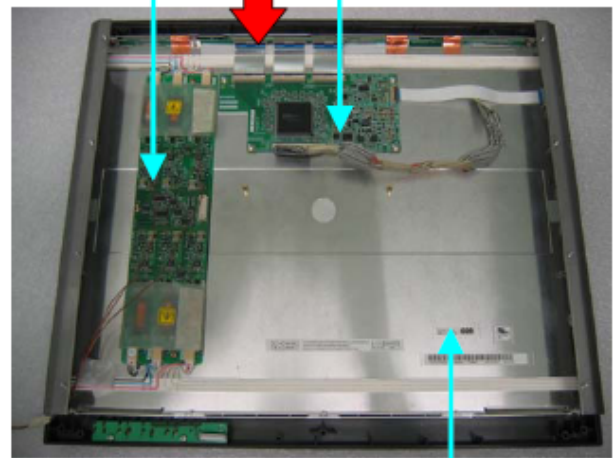
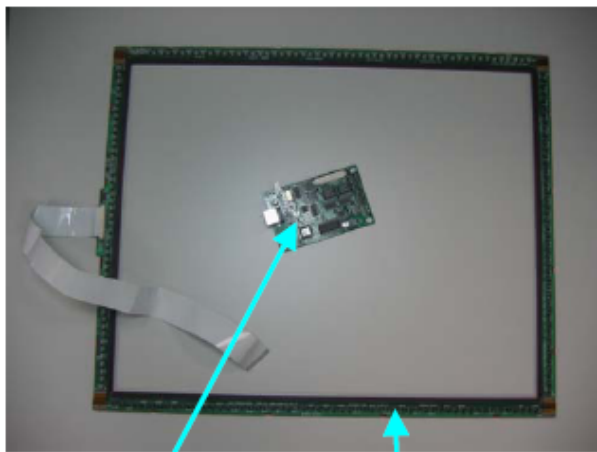
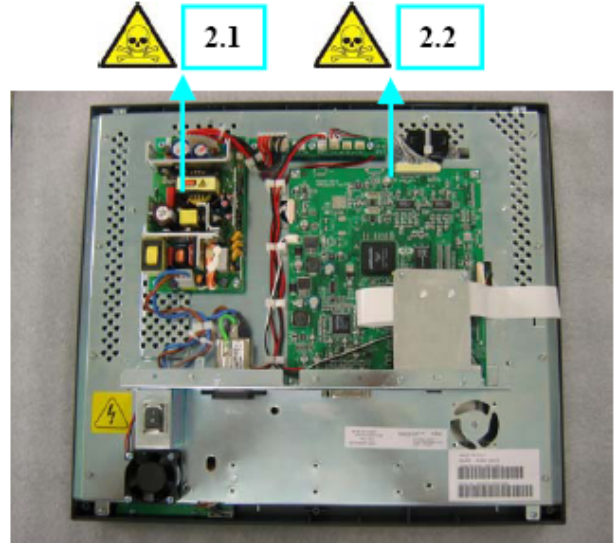


| Material | | |
|--|-----------------------------|---|
| Fe | 2.3 kg | - |
| Al | 0 | - |
| Cu | 0.1 kg | Cables |
| Plastics | 1 kg | - |
| Boards (S ² > 10cm ²) | 96 cm ² / 260 g | S.M.P.S. (item 2.1 in the picture) |
| | 320 cm ² / 230 g | Logic Board (item 2.2 in the picture) |
| | 80 cm ² / 180 g | Inverter (item 2.3 in the picture) |
| | 100 cm ² / 50 g | LCD Driver (item 2.4 in the picture) |
| | 46 cm ² / 40 g | PCB Backlight Stabilization (item 2.5 in the picture) |
| LCD | 2.7 kg | 18" |

LCD screen FIMI MCL180-LT / 9919-320-5092x

Printed copies are uncontrolled


| Hazardous  To be Removed | Substances: | | Location |
|---|--|--|-------------------|
| | Type | Quantity | |
| | Cd | 0 | |
| | Hg | 21mg max. (*) | Next figure (1) |
| | Pb | Lead is present in the soldering process of PCBs | Next figure (2.x) |
| | Cr ⁶⁺ | 0 | |
| | PBB | 0 | |
| | PBDE | 0 | |
| | (*) Mercury is present in Backlight lamps: 3.5mg x 6 lamps | | |

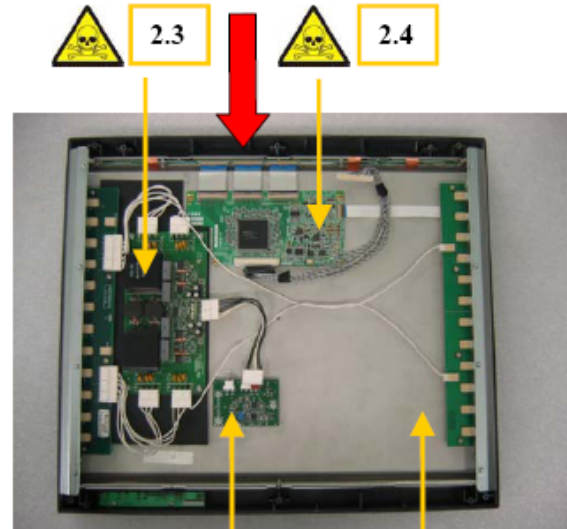
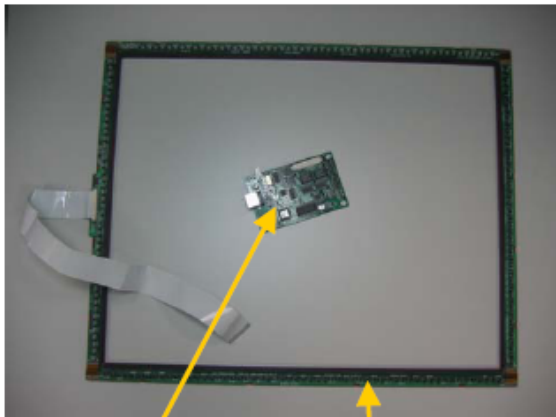
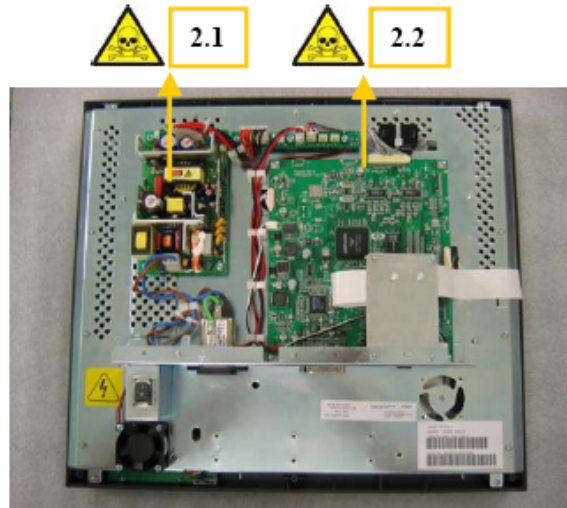


| Material | | |
|--|-----------------------------|---|
| Fe | 2.3 kg | - |
| Al | 0 | - |
| Cu | 0.2 kg | Cables |
| Plastics | 1 kg | - |
| Boards (S ² > 10cm ²) | 96 cm ² / 260 g | S.M.P.S. (item 2.1 in the picture) |
| | 320 cm ² / 230 g | Logic Board (item 2.2 in the picture) |
| | 80 cm ² / 180 g | Inverter (item 2.3 in the picture) |
| | 100 cm ² / 50 g | LCD Driver (item 2.4 in the picture) |
| | 71 cm ² / 80 g | PCB Touch-Screen controller (item 2.5 in the picture) |
| | 40 cm ² / 50 g | PCB Touch-Screen (item 2.6 in the picture) |
| LCD | 2.7 kg | 18" |

LCD screen FIMI MCL180-HBT / 9919-320-5091x

Printed copies are uncontrolled

| Hazardous  To be Removed | Substances: | | Location |
|---|--|--|-------------------|
| | Type | Quantity | |
| | Cd | 0 | |
| | Hg | 36 mg max. (*) | Next figure (1) |
| | Pb | Lead is present in the soldering process of PCBs | Next figure (2.x) |
| | Cr ⁶⁺ | 0 | |
| | PBB | 0 | |
| | PBDE | 0 | |
| | (*) Mercury is present in Backlight lamps: 3 mg x 12 lamps | | |



| Material | | |
|--|-----------------------------|---|
| Fe | 2.3 kg | - |
| Al | 0 | - |
| Cu | 0.2 kg | Cables |
| Plastics | 1 kg | - |
| Boards (S ² > 10cm ²) | 96 cm ² / 260 g | S.M.P.S. (item 2.1 in the picture) |
| | 320 cm ² / 230 g | Logic Board (item 2.2 in the picture) |
| | 80 cm ² / 180 g | Inverter (item 2.3 in the picture) |
| | 100 cm ² / 50 g | LCD Driver (item 2.4 in the picture) |
| | 46 cm ² / 40 g | PCB Backlight Stabilization (item 2.5 in the picture) |
| | 71 cm ² / 80 g | PCB Touch-Screen controller (item 2.6 in the picture) |
| | 40 cm ² / 50 g | PCB Touch-Screen (item 2.7 in the picture) |
| LCD | 2.7 kg | 18" |

Title: Recycling passport BV Pulsara 0718-094
 DocID: XDR054-090780