




SureSigns VS2 Recycling Passport

Product name:	SureSigns VS2	
Reference Identifier:	(Model) SureSigns VS2 (Reference num) 863079, 863080, 863081, 863082	
Total weight (in Kg):	<3.0 kg (863082 w/ battery)	
Producer /Manufacturer	Name company:	Philips Medical Systems
	Address:	3000 Minuteman Rd
	Zip code:	Andover, MA 01810
	Country:	USA

	Note – see figures 1-12 for disassembly	
Recycle info	Substances:	Location
Special attention 	<i>Indicate any part of the product that could pose a hazard to the recycler and treatment facility during disassembly such as capacitors with residual energy or spring loaded valves and show location</i>	
	. Warning Before attempting to open or disassemble the monitor, disconnect the AC power from the monitor and remove the battery. High voltage is generated by the LCD backlight inverter when powered.	Figure 2, 3, 4
	Warning The metal edges on the inside of the front case assembly are sharp. Use extreme caution when handling the separated monitor assemblies	Figure 13
Batteries	Type:	Location
	<i>Indicate all batteries in the product via battery chemistry and show location</i>	
	Lithium Ion battery	Figures 3, 4
Hazardous	Item	Location
	<i>Indicate location of printed circuit boards and mercury in back lights as well as any cadmium, flame retardants (PBB and PBB) and hexavalent chromium in the product and show location</i>	
	Tin lead solder on the PCB boards	Figures 13, 14

Additional Information as needed

Material content (global)	Weight in Kg	Materials content (continue)	Weight in Kg
Metal: Plated cold rolled steel chassis for mounting circuit boards.	0.52kg	Tin Lead solder used on PC Assemblies (ratio 63/37)	varies
Metal: Painted cold rolled steel can for wireless bridge	0.50kg	Equivalent Lithium Content in Lithium Ion Battery	6.48g
Metal: Aluminum LCD Frame.	0.13kg	Flame Retardant (FR) Plastics	0.95kg

SureSigns VS2 Recycling Passport



**Figure 1 – VS2 Unit w/ wireless option
(wireless bridge not visible)**



Figure 2 – AC Power - disconnect



Figure 3 – access to battery



Figure 4 – battery removal

SureSigns VS2 Recycling Passport

Figures 5-12: VS2 Disassembly

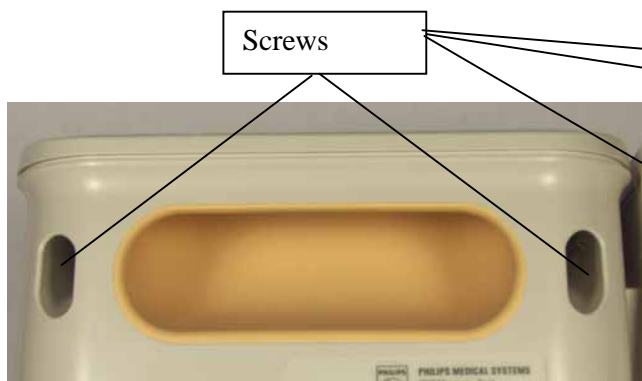


Fig 5

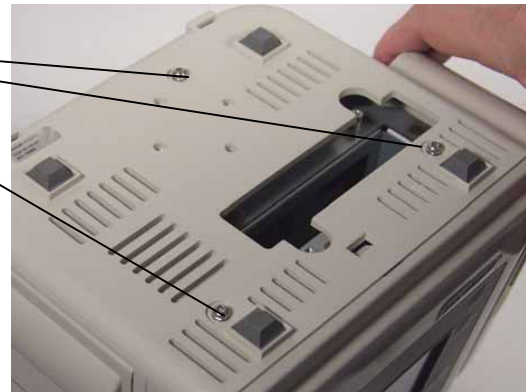


Fig 6



Fig 7



Fig 8

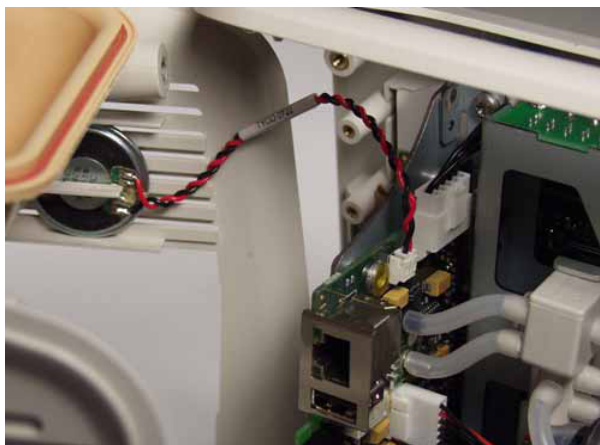


Fig 9

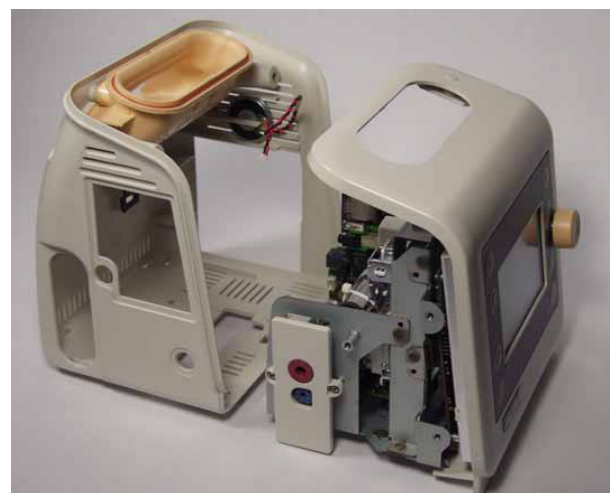


Fig 10

SureSigns VS2 Recycling Passport

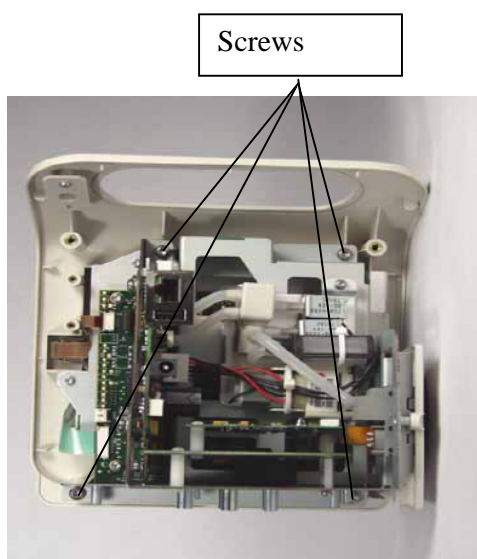


Fig 11

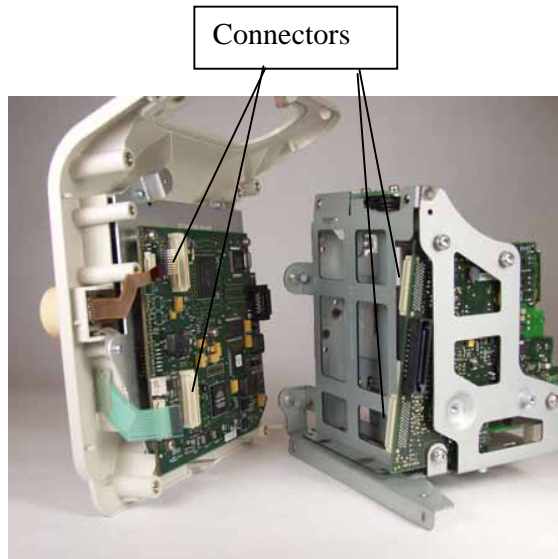


Fig 12

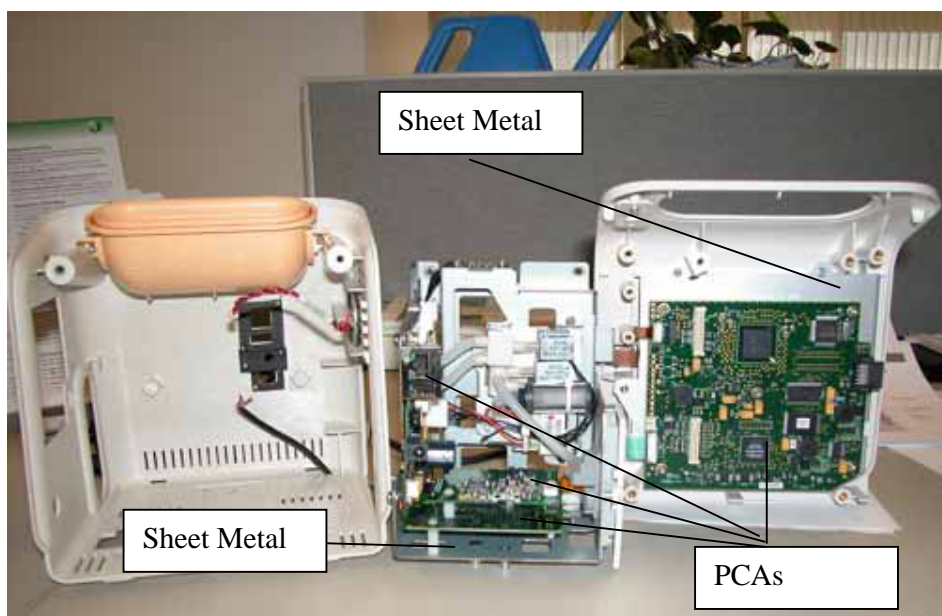


Figure 13 VS2 Disassembled

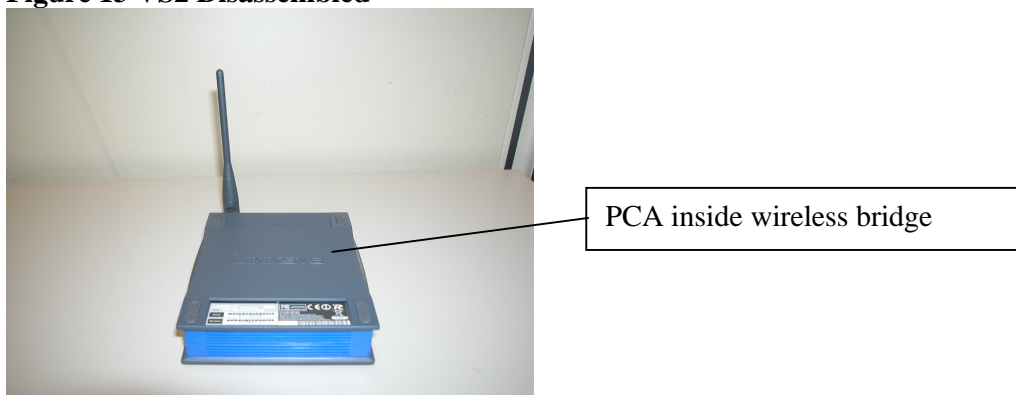


Figure14 – VS2 wireless bridge