
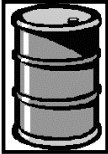




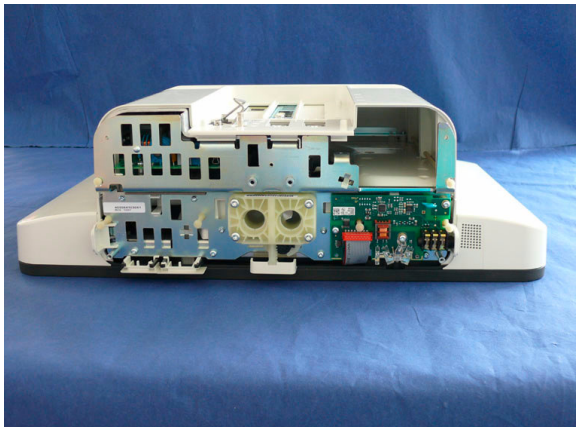
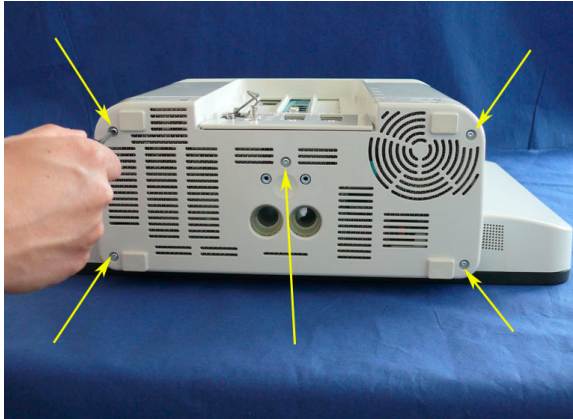
<b>PHILIPS HEALTHCARE</b>	<b>Product Recycling Passport</b>	Page 1 of 11
-------------------------------	-----------------------------------	--------------

<b>Product name:</b>	<b>MX800 Patient Monitor</b>	
<b>Identification code(s)</b>	<b>865240</b>	
<b>Total weight (in Kg)</b>	<b>11.6</b>	
<b>Producer/ Manufacturer</b>	<b>Name company:</b>	<b>Philips Medizin Systeme Böblingen GmbH</b>
	<b>Address:</b>	<b>Hewlett-Packard-Str. 2</b>
	<b>Zip code:</b>	<b>Boeblingen 71034</b>
	<b>Country:</b>	<b>Germany</b>

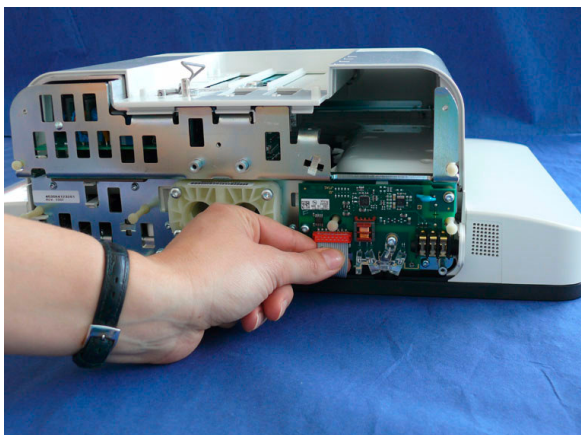
<b>Recycle Info</b>	<b>Items:</b>	<b>Location</b>
<b>Special attention</b> 	<b>TFT display containing backlights</b>	<b>Item 2 (step 27)</b>
 <b>Fluids / Gases</b>	<b>Items:</b>	<b>Location</b>
<b>Batteries</b>  <b>To be Removed</b>	<b>Type:</b>	<b>Location</b>
	<b>CR 2032 3V Li battery (optional with iPC)</b>	<b>Item 1 (step 13)</b>
<b>Hazardous</b>  <b>To be Removed</b>	<b>Substances:</b>	<b>Location</b>

**Show locations of materials mentioned on the previous sheet. (Picture and disassembling information)**

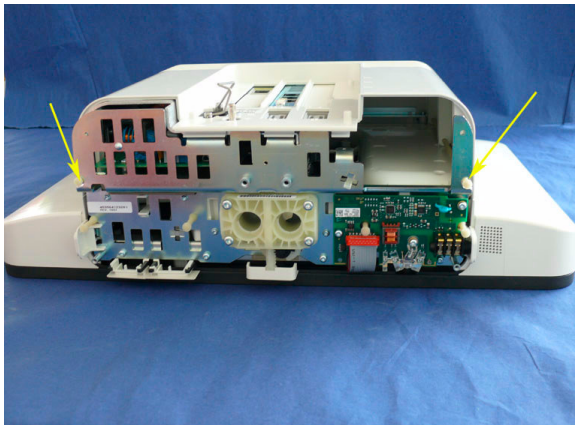
**1** Remove the five screws and pull off the bottom housing:



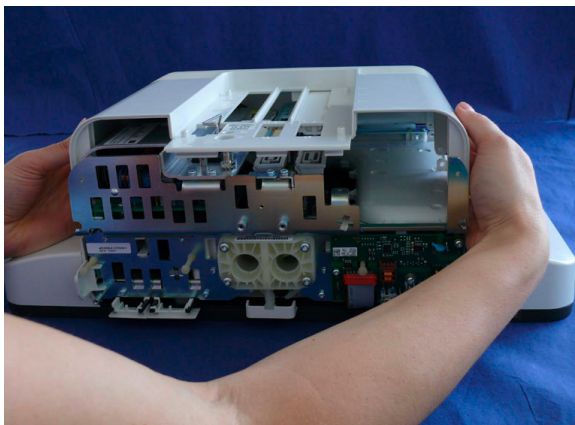
**2** Unplug the flat ribbon cable from the Power Switch/ECG Sync Out Board:



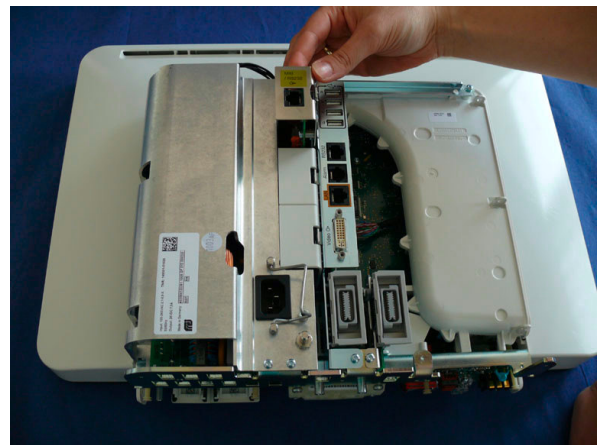
**3** Pull out the two white plastic pins:



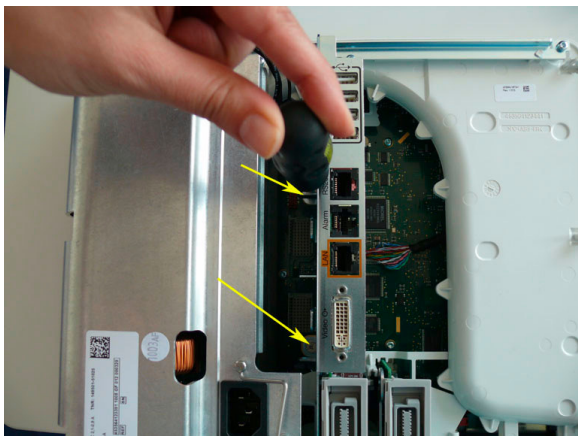
**4** Remove the housing rear:



**5** Remove the I/O cards and blank I/O slot covers by pushing the release lever and pulling them out at the same time:



**6** Loosen the two captive screws on the connector board assembly:

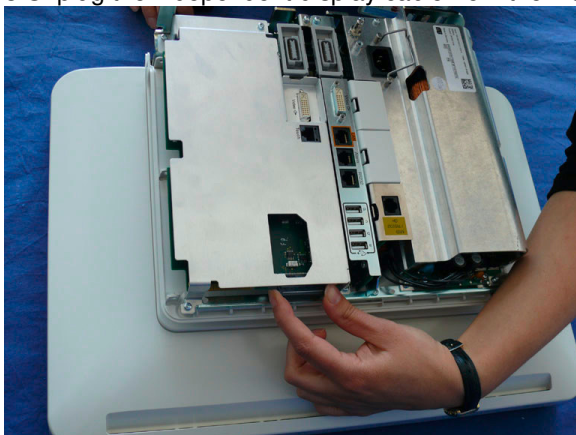


**7** Unplug the AC/DC power supply cable by pressing the two latches on the side of the connector:



**Step 8 is only applicable if the Independent Display Interface is installed:**

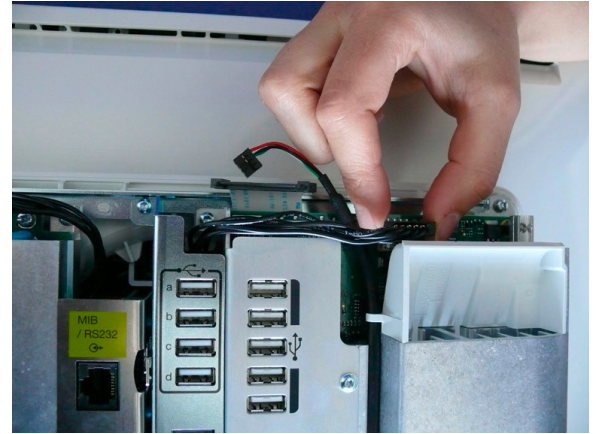
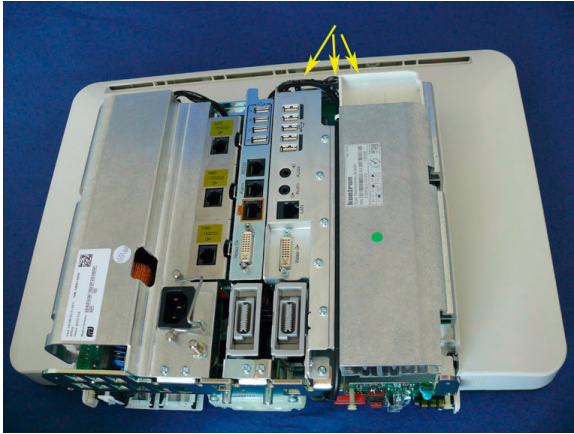
**8** Unplug the independent display cable from the main board:



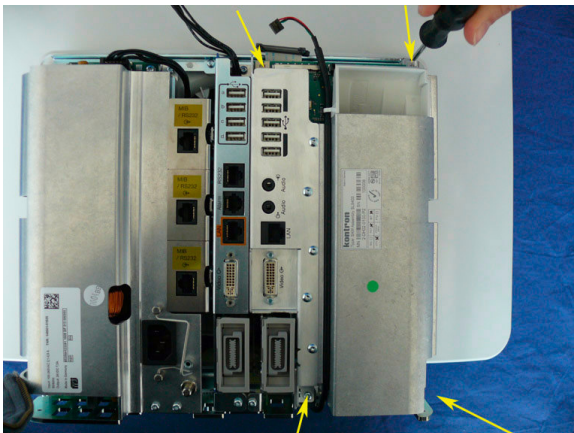


**Steps 9 - 13 are only applicable if the iPC is installed.**

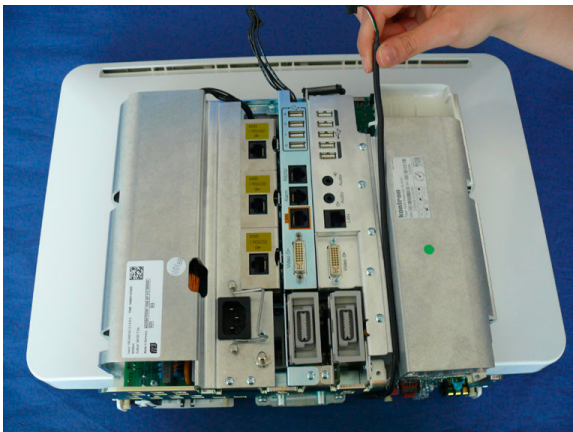
**9** Unplug the three iPC cables from the main board (Video, USB, Power):



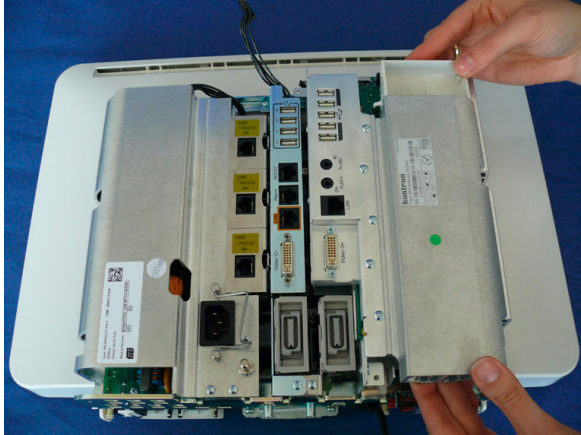
**10** Remove the four screws from the iPC:



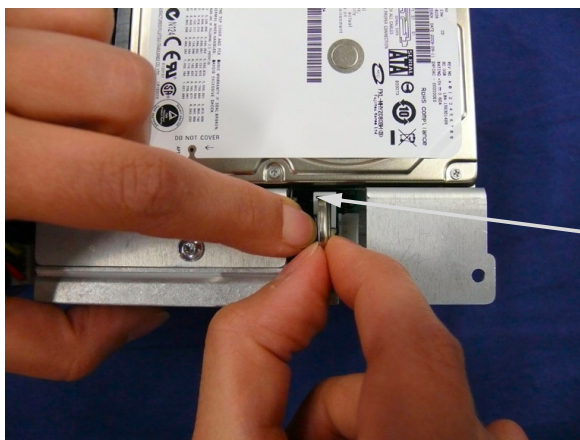
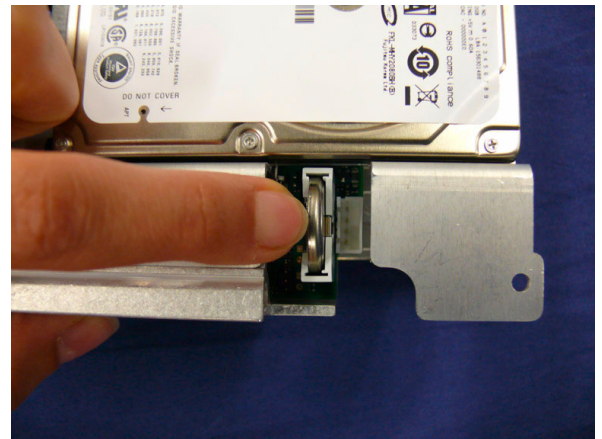
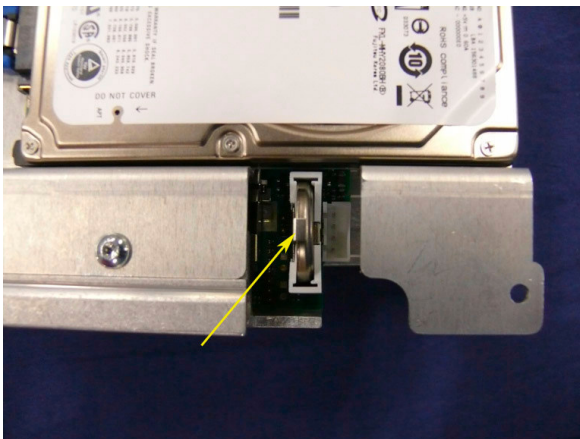
**11** W Remove the side USB cable from the iPC housing:



**12** Remove the iPC:

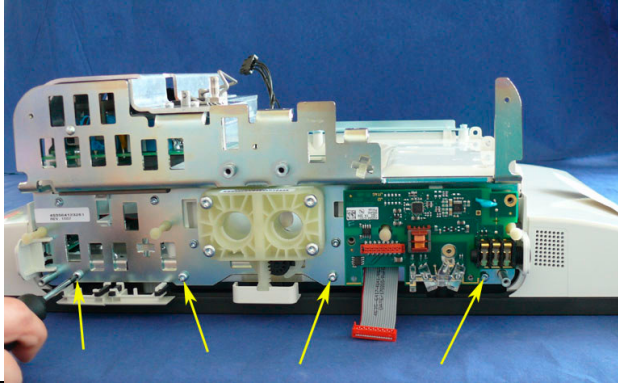


**13** Pull back the latch holding the battery and remove the battery:

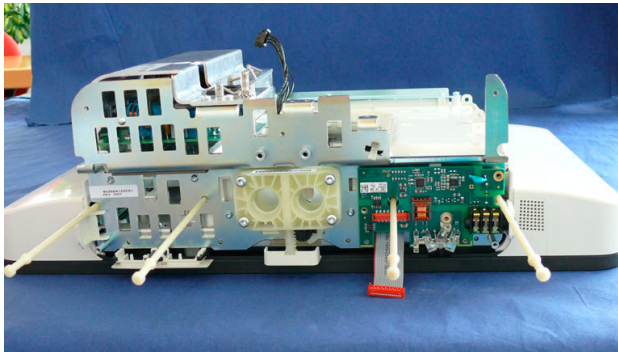


1

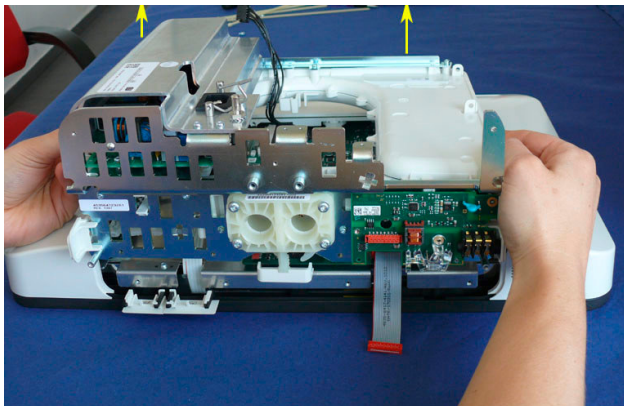
**14** With the display facing downwards, remove the bottom row of screws (four screws):



**15** Remove the four pins:

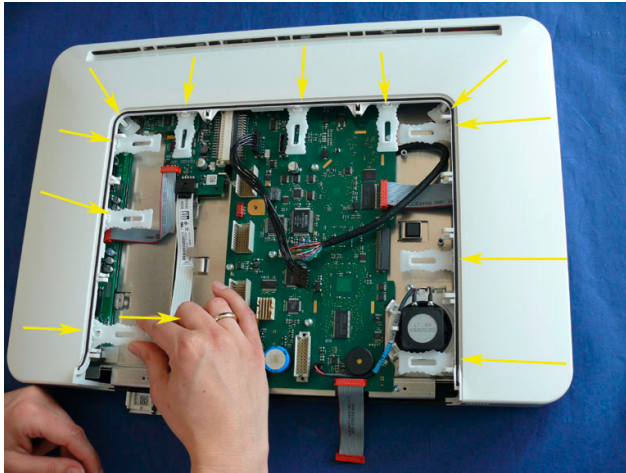


**16** Remove the arched element of the housing containing the AC/DC power supply, connector board and, if installed, the independent display interface board or the iPC:

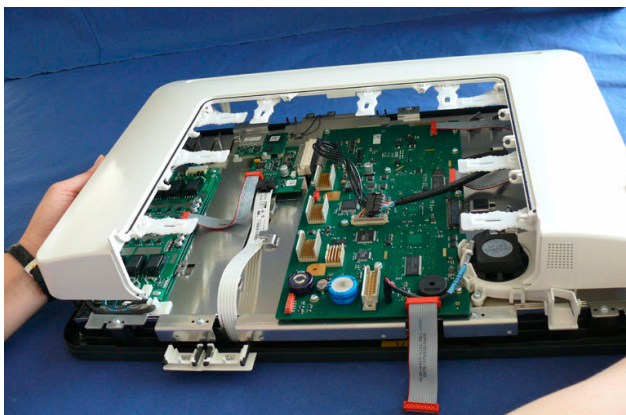




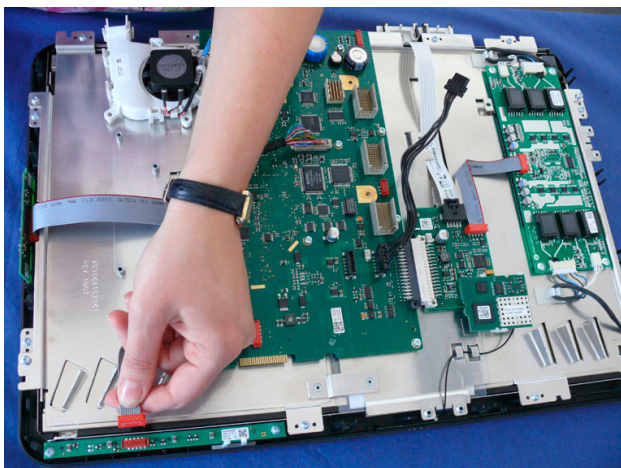
**17** Pull out the 11 release clasps until you hear a click and the padlock symbol on the release clasp is visible:



**18** Remove the rear display housing:

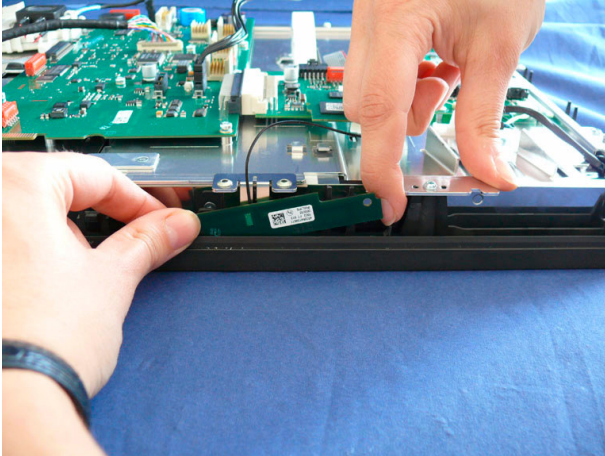


**19** Unplug the alarm LED cable:

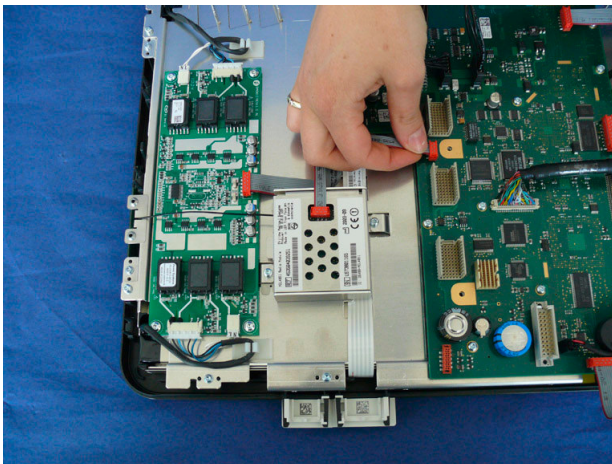




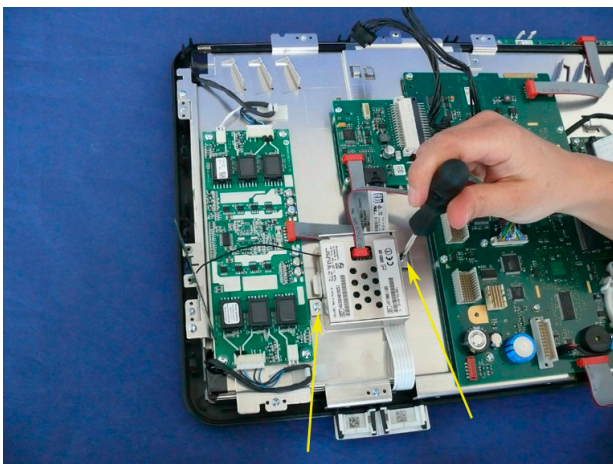
**20** Remove the antenna by pushing the latch in the housing outwards as shown below:



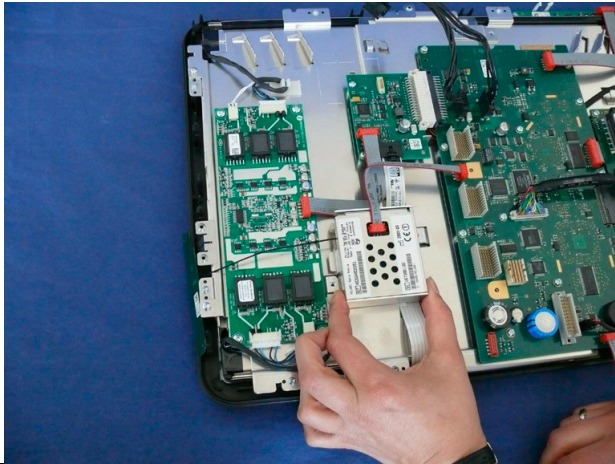
**21** Remove the IIT cable from the main board:



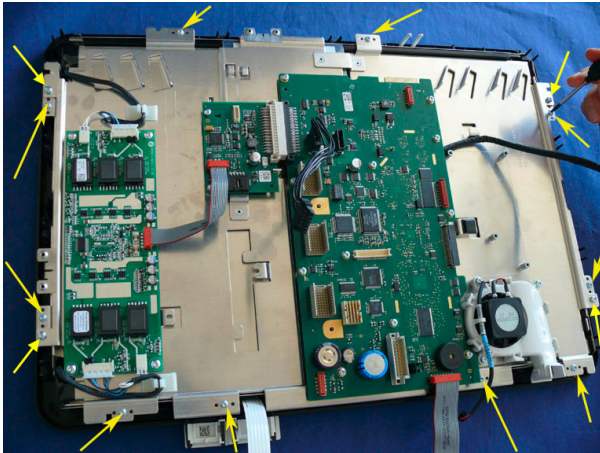
**22** Remove the two screws from the IIT module:



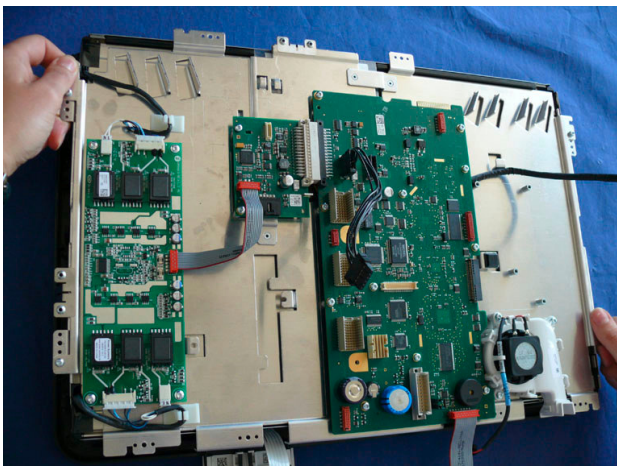
**23** Remove the IIT module by pulling it towards you as shown below:



24 Remove the fourteen self-cutting screws from the touch bezel assembly:



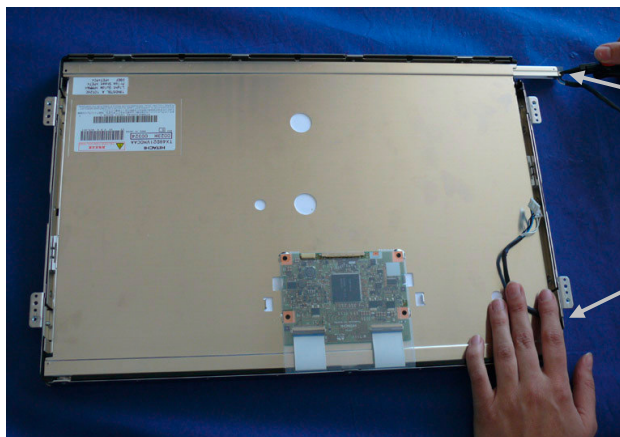
25 Remove the display chassis assembly by pulling it up out of the touch bezel assembly:



**26** Remove the screws from the individual backlights (PH0 x 60):



**27** Pull out the backlights:



2



### Recycling Passport Revision History

Rev	Description	Date
A	As issued	08-Apr-2011