
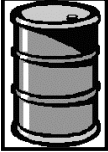




Printed copies are uncontrolled

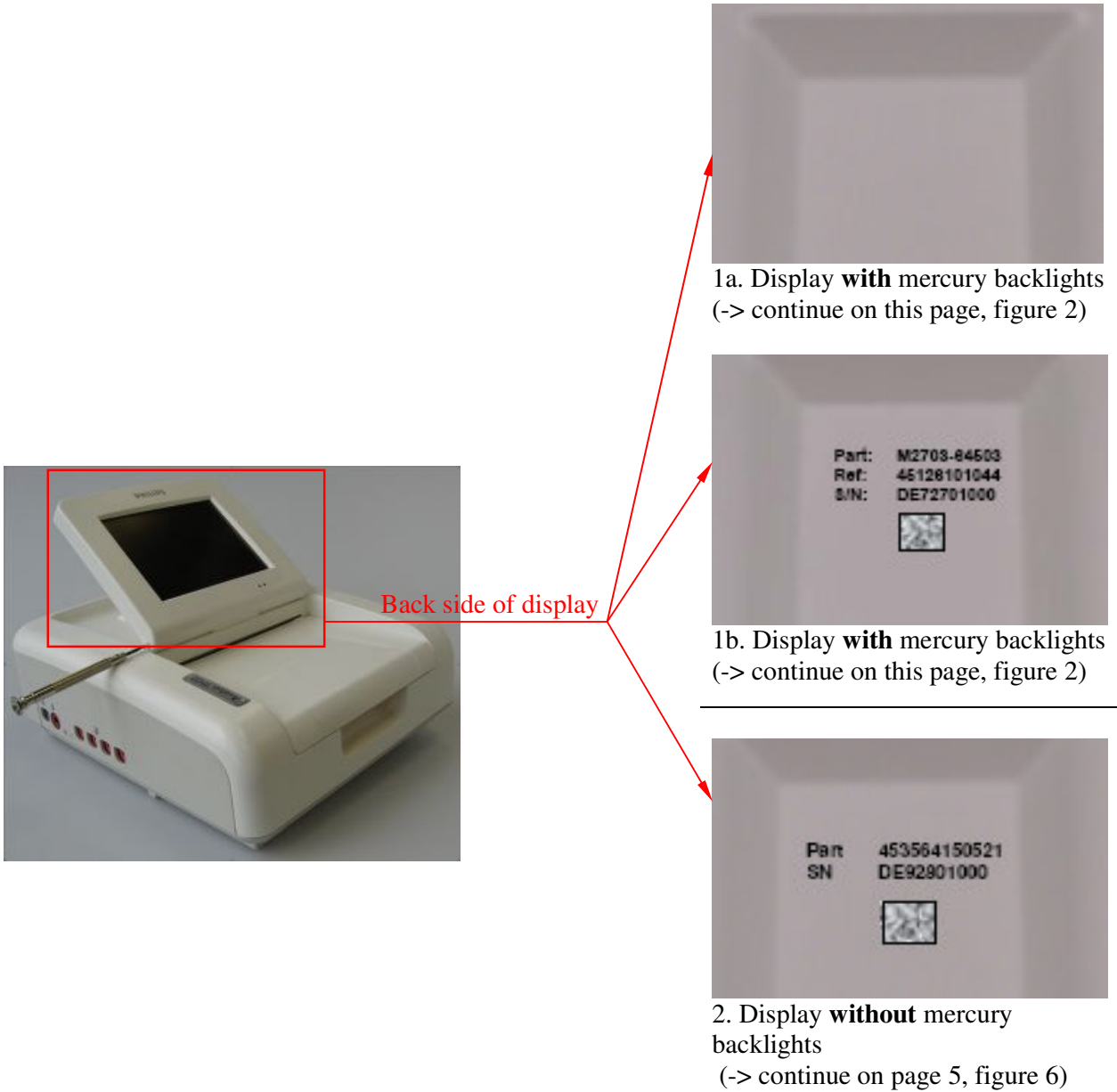
<b>Product name:</b>	<b>Avalon FM20 Fetal Monitor, Avalon FM30 Fetal Monitor</b>	
<b>Identification code(s)</b>	<b>M2702A, M2703A</b>	
<b>Total weight (in Kg)</b>	<b>4.9 kg (5.3 kg with battery option)</b>	
<b>Producer/ Manufacturer</b>	Name company:	Philips Medizin Systeme Boeblingen
	Address:	Hewlett-Packard-Strasse 2
	Zip code:	Boeblingen 71034
	Country:	Germany

<b>Recycle Info</b>	<b>Items:</b>	<b>Location</b>
<b>Special attention</b> 	Backlight (contains Mercury – Hg) (only for display part number M2703-64503, see Figure 1)	Figure 5 (item 1)
<b>Fluids / Gases</b> 		
<b>Batteries</b> 		
	Li-Ion battery (optional, only with option E25)	Figure 9 (item 2)
<b>To be Removed</b> 		

**Show locations of materials mentioned on the previous sheet. (Picture information)**

**Location of Mercury backlights of TFT Display (only for devices with display part number M2703-64503):**

Printed copies are uncontrolled



**Figure 1**

Printed copies are uncontrolled



**Figure 2**

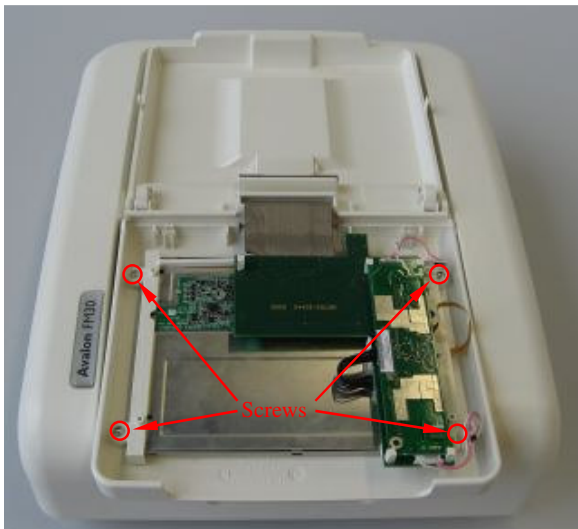


1. Pull out the pins on both sides.



**Figure 3**

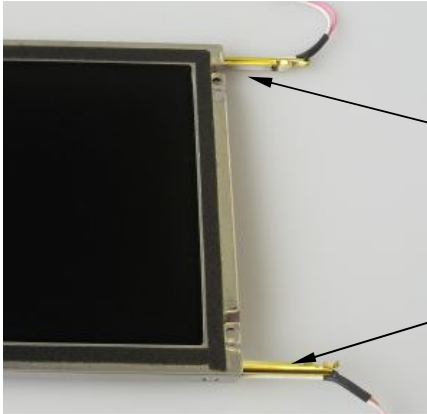
2. Open the Display Assy.



**Figure 4**

3. Remove the PCBs.  
4. Loose the four screws.

Printed copies are uncontrolled



5. Pull out the two backlights of the Display (contain Mercury – Hg)

**Figure 5**

Printed copies are uncontrolled

**Location of Li-Ion battery (optional):**



Right side of device

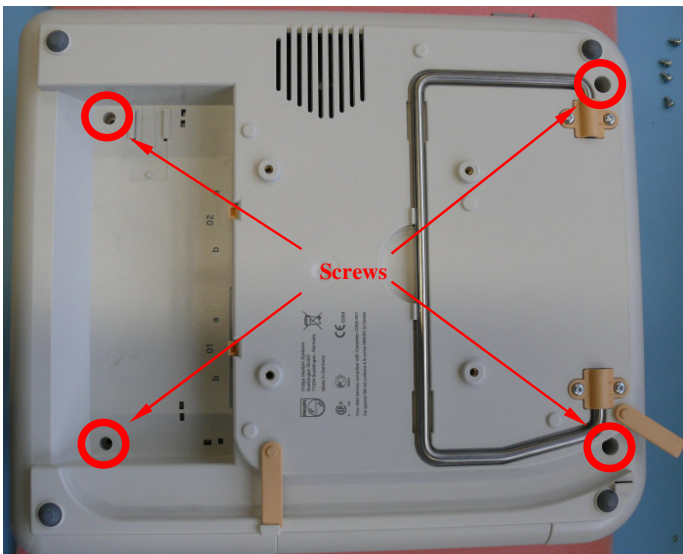


1. Device with Li-Ion battery  
(-> continue on this page)



2. Device without Li-ion battery  
(-> no disassembly necessary)

**Figure 6**

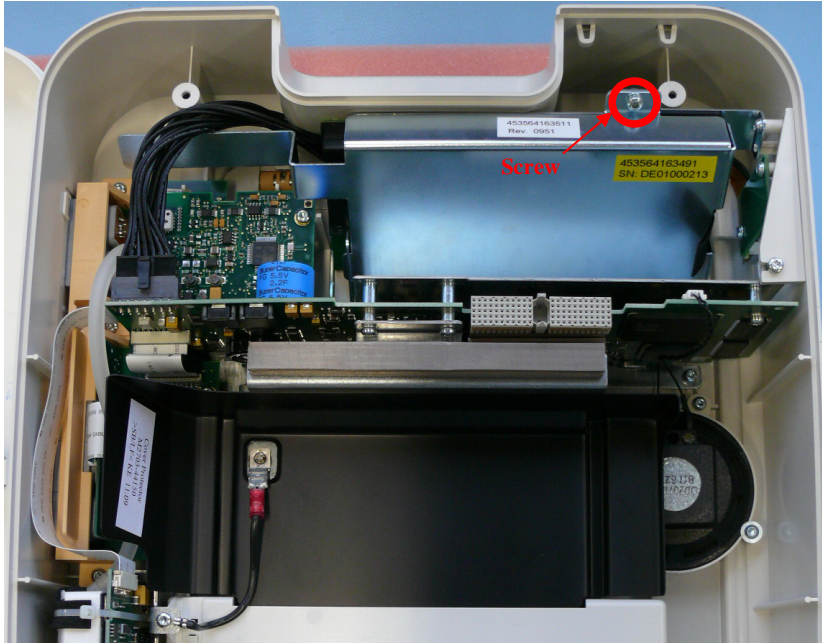


1. Loose the four screws and lift the housing

**Figure 7**

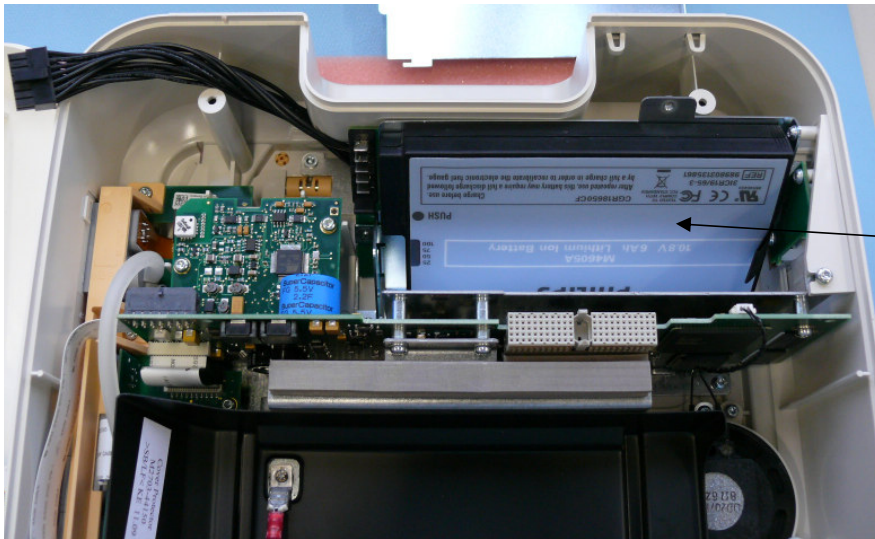
Title: Recycling Passport Avalon FM20/FM30  
Recycling Passport Number: A-M2702-97003 Rev: B

Printed copies are uncontrolled



2. Loose the screw and remove the metal cover

**Figure 8**



3. Remove battery

**Figure 9**