



PHILIPS

Ultrasound

Affiniti 50

**It understands
your everyday**

Philips Affiniti 50 ultrasound system for women's health care

Designed to set you ahead and help you stay ahead, Philips Affiniti 50 ultrasound system delivers innovation that responds to the needs of a busy ultrasound practice.

Designed for **balance**

You always go above and beyond to provide the best care to your patients. But you are expected to do so with less time, fewer resources, and higher patient volume.





To balance these many demands, you need diagnostic information quickly – but not at the expense of accuracy. You need advanced functionality – but not at the expense of ease of use. You need a system that is ergonomic – but built to last for the daily rigors of high patient volume.

Philips Affiniti 50 ultrasound system helps you achieve this balance. It delivers outstanding image quality and advanced tools for all gestational ages and complex gynecological cases – in a system that is out-of-the-box usable. Engineered for efficiency and reliability and powered by Philips superb performance, it gets you the diagnostic images you need, quickly. Its intuitive design and walk-up usability help you provide elegant, efficient care – every day.



The Affiniti 50 ultrasound system was designed to work hard, without high costs. Total cost of ownership is kept low through energy-efficient technology, extensive reliability testing that enhances uptime, and a modular design that enables rapid repair, if needed.

Workflow meets **wow**



Affiniti 50's precision beamforming, Tissue Specific Presets (TSP), and efficiency and automation tools deliver both performance and workflow for confident throughput.

Exceptional 3D surface rendering performance provides information to diagnose anomalies.

With the Affiniti 50 ultrasound system, workflow meets wow. The system incorporates those innovations that make Philips ultrasound the choice of those who demand quality images and proven clinical applications, while also addressing the everyday need to scan quickly and deliver results efficiently, even for complex cases.

Affiniti 50's precision beamforming with a wide dynamic range delivers superb spatial and contrast resolution, outstanding tissue uniformity, few artifacts, and reduced

image clutter. TSPs adjust over 7500 parameters to optimize the transducer for the specific exam type, producing excellent image quality with little or no need for image adjustment. This outstanding image quality combines with advanced clinical functionality.

Assess uterine tissue stiffness

Highly sensitive strain elastography can be used to assess relative tissue stiffness. Because it requires no external compression, it delivers exam consistency and reproducibility.



Q-App quantification applications

Affiniti 50 offers sophisticated Q-Apps to quantify ultrasound image information.

- General Imaging 3D Quantification (GI 3DQ)
- Region of Interest (ROI)

Automation tools save time

Philips Affiniti 50 system is our most automated ultrasound system in its class, ever. It is equipped with automation features that enhance workflow, decrease repetitive tasks, and enhance ease-of-use and consistency of exams among users. These include:

Real-time iSCAN (AutoSCAN)

Provides outstanding images in 2D, 3D, or 4D by automatically and continuously optimizing gain and TGC.

SmartExam guided workflow

Increases consistency, reduces keystrokes, and decreases exam time by 30%-50% by automatically planning and processing application protocols. Fast and easy to customize, SmartExam provides consistent and accurate annotation, automatic mode switching, and missed view alerts to streamline exams.

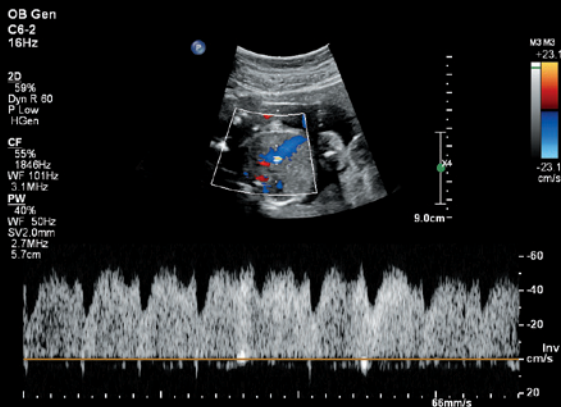
Efficient fetal scanning

Ability to create protocols for all trimesters and specialty exams such as trisomy 13 and 21.



Broadband transducers include the C6-2, C9-4v, C10-4ec, L12-5, L12-4, S8-3, V6-2, and 3D9-3v for all types of obstetrical and gynecological exams.

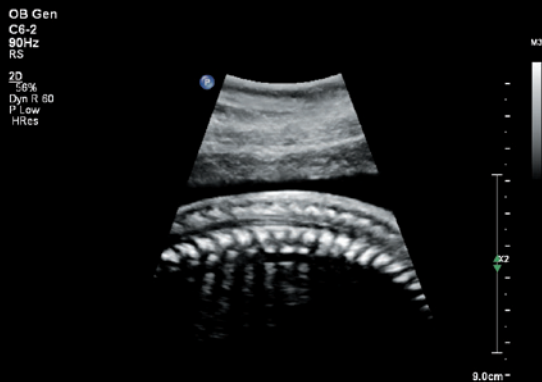
Performance



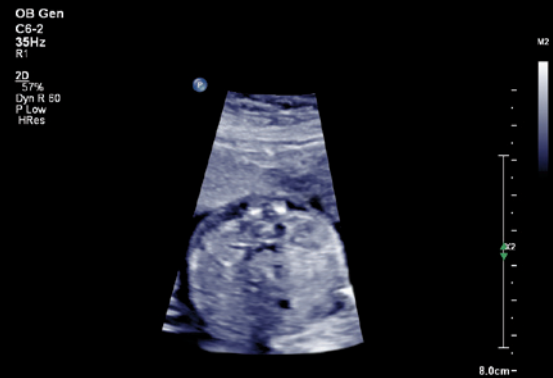
Doppler ductus venosus



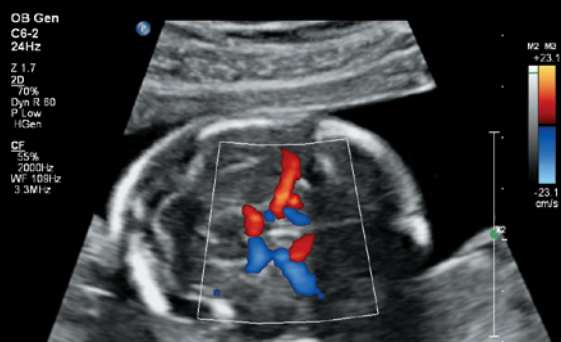
Fetal abdomen



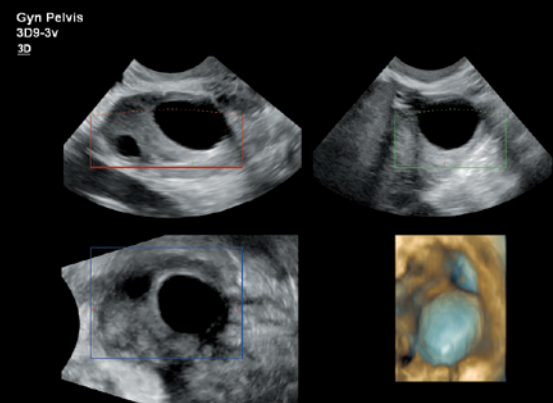
Fetal spine



Fetal kidneys



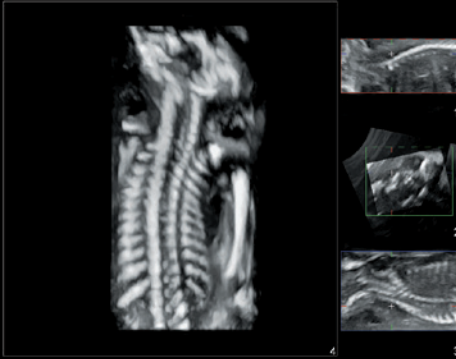
Middle cerebral arteries



3D ovary

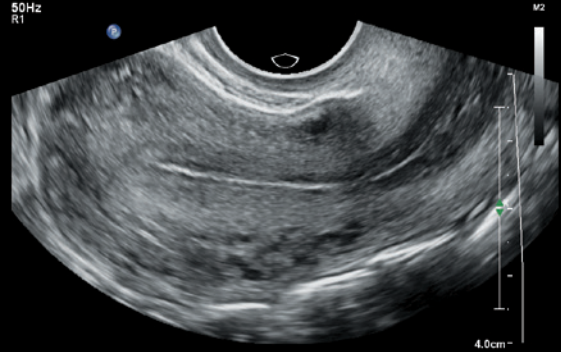
you can see

OB Gen
V6-2
3D



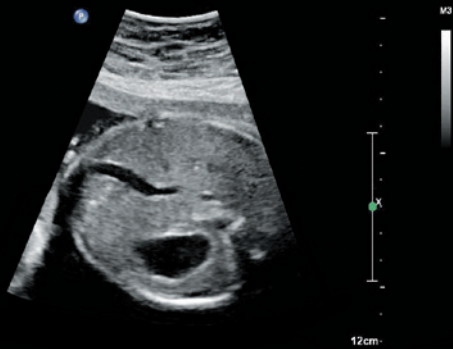
3D fetal spine

Gyn Pelvis
C9-4v
50Hz
R1



Long uterus

OB Gen
C6-2
35Hz
R1S



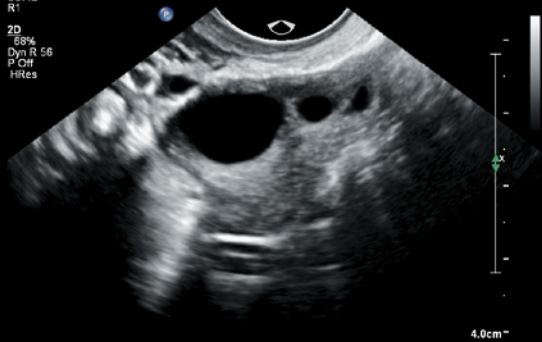
OB fetal abdomen

OB Gen
V6-2
3D



OB 3D fetal feet

Gyn Pelvis
C9-4v
33Hz
R1



Long ovary

OB Early
V6-2
4D



Early OB 3D

Ergonomic and elegant with walk-up usability,
Affiniti 50 requires minimal training to learn.

Comfort meets **competence**

Philips leverages the experiences of its customers to design Affiniti 50 to address the challenges of scanning. We understand the reality of tight spaces, high patient volume, technically difficult patients, and time constraints, and we've designed the system with thoughtful details to help lighten your workload. With Philips Affiniti 50, comfort meets competence in a system that is easy to learn and use.



You won't notice it's there unless it's gone, but users have reported that easy clip, our innovative cable management solution, keeps cables tangle-free and reduces damage while decreasing cable strain to enhance comfort while scanning.

Walk-up usability

The intuitive, intelligently designed user interface and system architecture have been validated by studies that show that users with ultrasound experience require minimal training on system use to be able to complete an exam.¹

Reduced reach and button pushes

To enhance exam efficiency, Affiniti 50 places relevant, easy-to-learn controls right at your fingertips, streamlining workflow. Affiniti 50 is designed to make a full day of scanning comfortable. Because 80% of ultrasound clinicians experience work-related pain, and more than 20% suffer a career-ending injury,² we've designed our intuitive, tablet-like touchscreen interface to reduce reach and button pushes.

The touchscreen is one of the largest in its class, so users can easily make selections and control scanning while focusing on their patients.

The control panel and generously sized 54.6 cm (21.5 in) monitor add to the system's ergonomics, enhancing scanning comfort whether standing or sitting. At just 83.5 kg (184 lb), Affiniti 50 is one of the lightest in its class and is 16% lighter than its predecessor.[†] With a small footprint, the system can be easily moved, and fits into small spaces.

Ready when you need it

To reduce the time required for mobile scans, the system can be put to sleep in two seconds, and then moved to a new location, where it starts up in just seconds. When an exam is finished, a full suite of DICOM capabilities make it easy to share information. Structured reporting facilitates patient workflow and information by giving you the ability to transfer measurements, images, and reports over network share, and wireless capability plus easy connection to printers helps you document exams.



With image replication and TGCs on its tablet touchscreen, Affiniti 50 was designed to reduce reach and button pushes.



Affiniti 50's friendly design and library-quiet operation enhance patient comfort.



To reduce the time required for mobile scans, the system can be put to sleep in two seconds, and then moved to a new location, where it starts up in just seconds.

¹ 2014 internal workflow study comparing Affiniti to HD15.

² Society of Diagnostic Medical Sonography, Industry Standards for the Prevention of Musculoskeletal Disorders in Sonography, May 2003.

[†] HD15

Built to withstand the rigors of daily use, Affiniti 50 offers low operating costs and is backed by Philips support and value-added services. The Affiniti 50 system boasts a low total cost of ownership, making it a smart investment.

A **smart** investment

Enhance uptime

- A modular design for enhanced reliability and rapid repair
- Philips remote services* monitoring, which corrects issues using a standard Internet connection, reducing the need for service calls
- Access to our award-winning service organization

Responsive relationships

The value of a Philips ultrasound system extends far beyond technology. With every Affiniti 50 system, you get access to our award-winning service organization, our competitive financing, and educational programs that help you get the most out of your system.



Service Request button for immediate access to Philips support.

Exceptional serviceability

The system features a superb modular design for rapid repair.

*Not all services available in all geographies; contact your Philips representative for more information. May require service contract.



Smart service options* help reduce disruption to your everyday workflow. We also offer technology to keep your data secure, and education and utilization reports that help you get the most out of your system.

Remote desktop

Spend less time on the phone with a Philips “Virtual Visit” with remote system* interaction for fast technical and clinical troubleshooting and guided scanning options.

iSSL technology

This industry-standard protocol meets global privacy standards and provides a safe and secure connection to the Philips remote services network using your existing Internet access point.

Online support request

Enter a support request directly from your Affiniti 50 system for a fast, convenient communication mechanism that reduces workflow interruption and keeps you at the system and focused on your patient.

Utilization reports

Data intelligence tools can help you make informed decisions to improve workflow, deliver quality patient care, and decrease the total cost of ownership. This is the only ultrasound utilization tool that provides individual transducer usage and the ability to sort by exam type.

Proactive monitoring

Proactive monitoring allows for the detection and repair of anomalies before they become problems, and helps us to better predict potential failures and proactively act on them. Increase system availability, optimize workflow, and promote patient satisfaction by scheduling downtime as opposed to reacting to an unexpected problem.

Intelligent software architecture

Software is easily optimized, maintained, and restored by the service user without risk to patient data, giving you peace of mind and confidence that your data is secure. Patient data is stored on a separate partition and physical location to provide protection and ease of removal, providing you total control of your data.

Clinical education solutions

Our comprehensive, clinically relevant courses, programs, and learning paths are designed to help you improve operational efficiency and enhance patient care.

Affiniti 50 consumes nearly

40%
less power

than its predecessor.†
It consumes less energy than a toaster, which can help you save on energy and cooling costs.



* Not all services available in all geographies; contact your Philips representative for more information. May require service contract.

† HD15



© 2015 Koninklijke Philips N.V. All rights are reserved.

Philips Healthcare reserves the right to make changes in specifications and/or to discontinue any product at any time without notice or obligation and will not be liable for any consequences resulting from the use of this publication.

Please visit www.philips.com/Affiniti

Printed in The Netherlands.
4522 991 09781 * APR 2015