

FieldStrength

Publication for the
Philips MRI Community

ISSUE 46 – 2012/2

NetForum has a lot to
offer for Philips MR users



This article is part of FieldStrength issue 46
2012/2

NetForum has a lot to offer for Philips MR users

Join the online community for users of Philips MR, CT and NM systems

NetForm is the online community for users of Philips MR, CT and NM systems. NetForum content helps you to learn more about Philips products from the people whose opinions you value the most: your peers. The content is organized in three sections: Explore, Operate and Grow. Learn more and sign up at:

www.philips.com/netforum

EXPLORE

Share clinical results

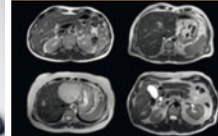


Explore clinical cases and shared experiences on Philips imaging systems.

Clinical News, Case Studies, Best Practices, Webinars, Publications, Abstracts and more.

OPERATE

Support your scanning



Download ExamCards and tools to enhance image quality and increase scan efficiency.

ExamCards, Protocols, Application Tips, Product Training and more.*
*Requires registration

GROW

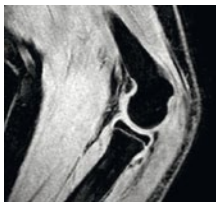
Support your business



Grow your practice by optimizing system performance now and over the long term.

Utilization Services, workflow papers and more.*
*Requires registration

Don't miss this on NetForum



New Pediatric ExamCards

Some dedicated pediatric ExamCards were recently added to NetForum. Sets of Achieva 3.0T ExamCards for children of different ages were shared for shoulder, elbow and wrist. Achieva 1.5T ExamCards were added for pediatric IBD and urography.

Get there via: Operate > ExamCards > Pediatric



Ingenia – Content overview

Start here for a quick overview of all available Ingenia content. New ExamCards, Case Studies, Best Practices and Web Seminars are being added regularly.

Get there via: Explore > Clinical News > MRI

Most popular MRI NetForum contributions in first quarter of 2012

1. [Application Tip](#) [Metal artifact reduction for MRI of metal prostheses and implants](#)
2. [ExamCard](#) [1.5T hip with prosthesis using MARS protocol](#)
3. [ExamCard](#) [Ingenia 3.0T Breast - WellStar Health System, Atlanta](#)
4. [Application Tip](#) [Tips for body diffusion weighted imaging \(DWI\)](#)
5. [Application Tip](#) [Tips for non-contrast MRA](#)