



Open access with patient-adaptive coil elements

Philips dStream Breast 16ch coil solution for Ingenia 1.5T / 3.0T

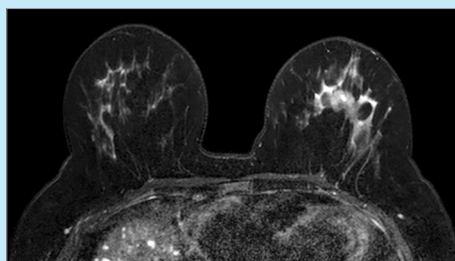
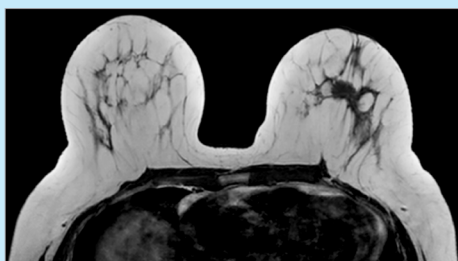
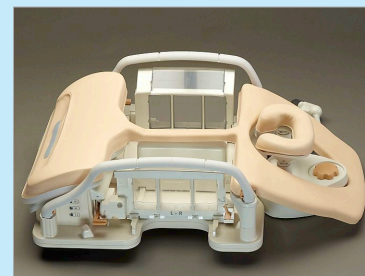
A fully digital 16ch breast coil with wide open access and adaptive coil elements which can be adjusted to the patient's breast size. The coil is designed to deliver high performance in coverage, image resolution and imaging speed for both diagnostic and interventional breast studies. An adjustable head rest, soft patient ramp, sling pad for sternal comfort and curved immobilization plates are included to provide maximum patient comfort.

- 16ch digital image quality with open access design
- Adaptive coil elements adjusting to patient's breast size
- Coil cart included for easy transportation and storage of coil and accessories

PHILIPS

dS Breast 16ch coil solution

Coverage	Bilateral
Max. number of channels:	16
Main applications:	Breast
Coil solution type:	Integrated
Data Sampling:	DirectDigital
Coil connection:	Single Flex Connect
SENSE parallel imaging:	dS-SENSE enhanced parallel imaging performance
Other features:	Includes a comprehensive set of dedicated accessories Includes a coil cart for easy transportation and storage of the coil and accessories Can be turned into a dedicated Breast solution by adding a FlexTrak trolley (optional)



Please visit www.philips.com/



© 2013 Koninklijke Philips N.V.
All rights are reserved.

Philips Healthcare reserves the right to make changes in specifications and/or to discontinue any product at any time without notice or obligation and will not be liable for any consequences resulting from the use of this publication.

Philips Healthcare is part of Royal Philips

www.philips.com/healthcare
healthcare@philips.com

Printed in The Netherlands
4522 962 95381 * JUL 2013