



Designed to improve your efficiency

Philips FlexTrak Mammo workflow solution for Ingenia

Philips FlexTrak Mammo offers improved patient preparation and workflow for breast imaging and interventional procedures. Addition of FlexTrak Mammo to your MR system transforms it into a dedicated MR mammography solution within seconds while retaining full functionality of the standard system.

- Dedicated breast patient transport system.
- Available with 7ch and 16 ch dS Breast coils.
- Workflow solution offering high quality imaging and patient comfort.

PHILIPS
sense and simplicity

FlexTrak Mammo

FlexTrak Mammo and the wide bore Ingenia MR system provide a comprehensive Breast Solution. Easy patient set-up and after-care is combined with high image quality, patient comfort and scanner efficiency.

FlexTrak Mammo is available with dedicated dS Breast coils:

- 16 channel
- 7 channel with integrated lighting.

Dedicated accessories

Included with Flextrak Mammo:

- Patient comfort ramp
- Adjustable head rest with patient mirror
- Comfortable padding
- Headset, nurse call.

Height adjustment is optional.

Interventional procedures

In conjunction with the 7ch dS Breast coil, FlexTrak Mammo provides an excellent solution for interventional procedures. The coil's open design allows easy lesion access from multiple directions (medial, lateral or cranial), while DynaCAD interventional software supports accurate calculation of lesion coordinates.

MR system time (on average 35 minutes per exam*) can be saved by use of a dedicated breast trolley to prepare the patient and performing after-care away from the magnet. This significantly reduces the time spent in the MR magnet room, thereby improving scanner efficiency.

* Study conducted on 20 (interventional) patients in St. Jan General Hospital in Brugge, Belgium. 53% of the interventional procedure time is spent on scanning, 16% on preparation and 31% on patient after-care. Use of a breast trolley lead to time savings in the MR room ranging from 23 to 46 minutes (35 minutes on average).



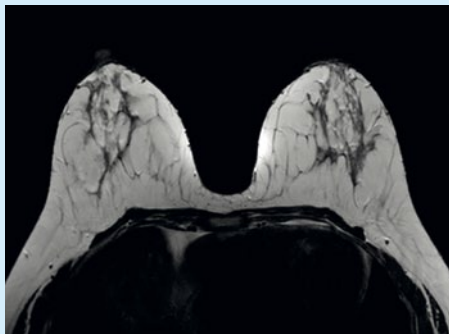
16 channel dS Breast coil



7 channel dS Breast coil



T2w TSE



eTHRIVE



Breast interventional procedure

Please visit www.philips.com/MRI



© 2011 Koninklijke Philips Electronics N.V.
All rights are reserved.

Philips Healthcare reserves the right to make changes in specifications and/or to discontinue any product at any time without notice or obligation and will not be liable for any consequences resulting from the use of this publication.

Philips Healthcare is part of Royal Philips Electronics

www.philips.com/healthcare
healthcare@philips.com

Printed in The Netherlands
4522 962 78261 * SEP 2011