



**PHILIPS**

dStream Knee 8ch

MR coils

# Designed for **high resolution knee imaging**

dS Knee 8ch coil for 1.5T and 3.0T systems with dStream

## **Key benefits**

---

- Designed for high resolution visualization of fine cartilage structures and small ligaments
  - Coil rotation feature for enhanced positioning and comfort
  - Split design and single handle for easy coil setup
- 

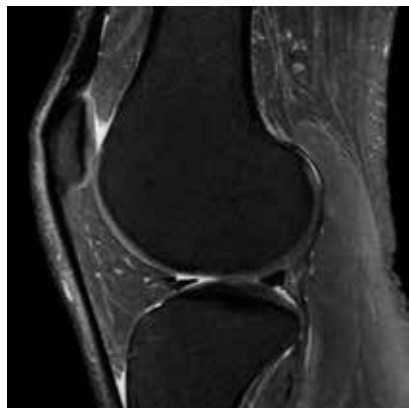
Coil designed for high resolution imaging of the left or right knee. The coil conforms snugly to the anatomy for excellent signal-to-noise ratio. The coil can be slightly rotated relative to its base plate to ease coil setup and enhance patient comfort.

# dStream Knee 8ch coil

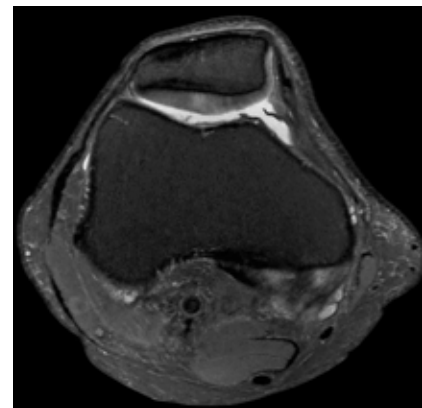
Coverage	16 cm
Maximum number of channels	8
Main applications	Knee
Coil solution type	Dedicated
Data sampling	dStream digital broadband
Coil connection	dStream Interface
SENSE parallel imaging	dS SENSE enhanced parallel imaging performance



**Coronal T1w TSE**  
Resolution: 0.3 x 0.4 x 2.0 mm  
Scan time: 4:23 min  
Ingenia 3.0T  
Courtesy: Palo Alto Medical  
Foundation, CA, USA



**Sagittal PDw SPAIR**  
Resolution: 0.2 x 0.3 x 2.0 mm  
Scan time: 5:15 min  
Ingenia 3.0T  
Courtesy: Palo Alto Medical  
Foundation, CA, USA



**Axial PDw SPAIR**  
Resolution: 0.2 x 0.3 x 2.0 mm  
Scan time: 4:44 min  
Ingenia 3.0T  
Courtesy: Palo Alto Medical  
Foundation, CA, USA