



**PHILIPS**

dStream Knee 16ch

MR coils

# Coverage and high resolution

dS Knee 16ch coil for 1.5T systems with dStream

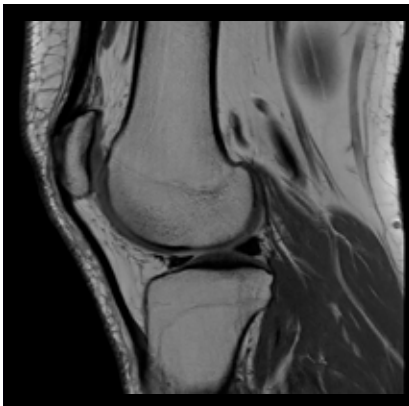
## Key benefits

- Fast exams with dS SENSE in all directions
- Large aperture of 15 cm for muscular or obese patients
- Easy positioning and large coverage for high throughput

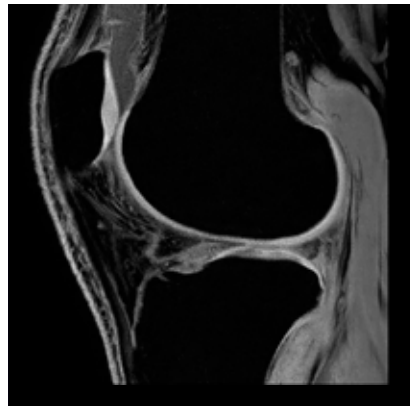
A coil designed for imaging with high signal-to-noise ratio (SNR) over an extended field of view of the knee. Two overlapping rings with eight elements each extend the coverage area and reduce the need for precise positioning. dS SENSE enhanced parallel imaging can be selected in all directions. The dS Knee 16ch coil has a split design for easy patient setup and an ergonomically ramped insert to support patient comfort.

# dStream Knee 16ch coil

Coverage	20 cm
Maximum number of channels	16
Main applications	Knee
Coil solution type	Dedicated
Data sampling	dStream digital broadband
Coil connection	dStream Interface
SENSE parallel imaging	dS SENSE enhanced parallel imaging performance



**Sagittal PDw TSE**  
Resolution: 0.4 x 0.6 x 3.0 mm  
Scan time: 2:27 min  
Achieva dStream 1.5T



**Sagittal 3D T1w FFE ProSet**  
Resolution: 0.4 x 0.4 x 3.0 mm  
Scan time: 3:15 min  
Achieva dStream 1.5T  
Courtesy: Meander Medical Center,  
Amersfoort, The Netherlands



**Coronal PDw mSPIR**  
Resolution: 0.5 x 0.7 x 3.0 mm  
Scan time: 1:55 min  
Achieva dStream 1.5T  
Courtesy: Meander Medical Center,  
Amersfoort, The Netherlands

