



Redefining the game in analysis

Cardiac imaging applications with IntelliSpace Portal

The customer

Dr. Guy Weigold, M.D., FACC, FSCCT

Director of Cardiac CT
 Director of Cardiac CT Core Lab,
 MedStar Health Research Institute

Dr. Gaby Weissman, M.D.

Assistant Professor of Clinical Medicine
 & Radiology, Georgetown University
 Division of Cardiology, MedStar
 Washington Hospital Center Heart
 Institute

Dr. Tony Fuisz, M.D.

Director of Advanced Imaging

Dr. Elmo. R. Acio, M.D.

Associate Director, Nuclear Medicine
 Director, Nuclear cardiology

**MedStar Washington Hospital
 Center, Washington, D.C., USA**

- Private, not-for-profit institute and academic medical center
- 900 beds
- 10 networked hospitals in the Washington-Baltimore region

The challenge

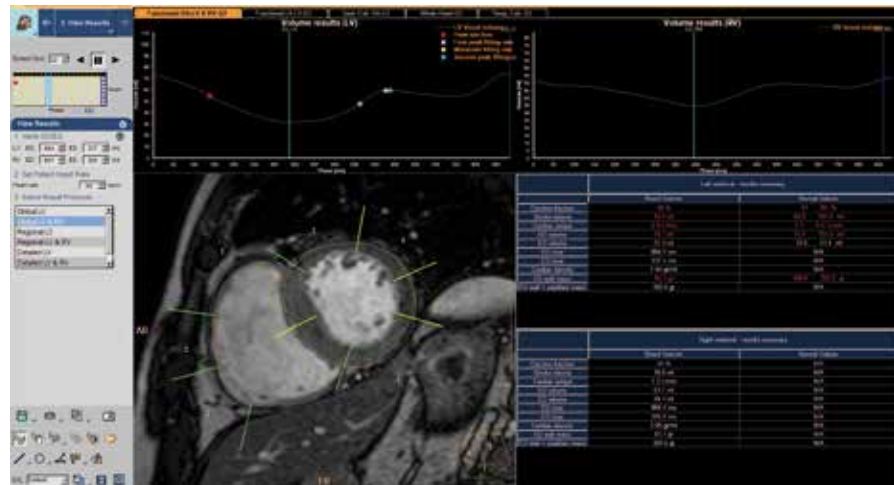
Review and analyze MR, CT, and NM datasets in less time and allow multi-user access – without being limited to an individual workstation

The solution

Cardiac imaging applications on Philips IntelliSpace Portal

- CT Cardiac Viewer
- CT Calcium Scoring
- CT Comprehensive Cardiac Analysis
- CT Cardiac Plaque Assessment
- CT Vessel Analysis
- MR Cardiac Viewer
- MR Comprehensive Cardiac Analysis
- NM Viewer

Nearly 2,600 MR and CT exams per year leave no time for limited clinical coverage and patchworked solutions. That's why Drs. Weigold, Weissman, Fuisz, and Acio switched to Philips IntelliSpace Portal, a system for advanced visualization and analysis. This server-based platform and its cardiac imaging applications is "a completely new way for us to analyze our studies and allows us to have time to do new things." Offering an excellent combination of viewing and analysis, it reduces time delays while enabling multi-user access. And the team is thrilled with the solution's new cardiac imaging applications.



MR Comprehensive Cardiac Analysis

Within a year, cardiac imaging applications on IntelliSpace Portal have become a trusted component of the team's workflow. Most cardiac cases are viewed in IntelliSpace Portal Cardiac Viewer, most NM cases in IntelliSpace Portal NM Viewer. "About 20% of CT cases continue to CT Comp Cardiac," explains Fuisz, "and 100% of MR Cardiac cases continue to the Comp

Cardiac package." The move brought one immediate change: isolated, modality-based workstations were replaced with the system's versatile, server-based platform. Now the team could reap the full rewards of working with the suite of cardiac imaging applications – speed and increased diagnostic confidence as well as a design and features refined over time.

Providing valuable insight

The cardiac imaging applications help the team feel even more confident about their work. “Cardiac CT and MR simply offer exceptional viewing and analysis capabilities,” confirms Weissman, mentioning the improvements over their former workstations. “It’s easy to compare functional images in real time,” adds Weigold, “and we can see ‘functional’ and ‘orientation’ on one screen.” What’s more, the functional MR cardiac analysis’s large scope translates into valuable insight for patient treatment.

In terms of CT, Weigold sees Philips as the genuine leader in analysis applications. Not only is the workflow intuitive, but “Philips offers outstanding automation for every step,” he says, referring to the expanded set of automation tools which includes segmentation and lumen counteracting.

Working efficiently in more places

Why does work run faster these days for the team? Fuisz says the well-organized workflow is just the start. “IntelliSpace Portal does more work for us,” he elaborates, “and with it, there’s less fixing of auto elements.” Cardiac MR, for example has reduced the time involved in some studies and Cardiac MR and CT together, notes Weissman, have lowered overall analysis time by 20%-30%.

Acio also appreciates how the switch to a server-based system has boosted efficiency in general. “IntelliSpace Portal lets me do what I need to do in different locations...near the equipment, in my office, at the department,” he explains. “And if one of the computers is in use or already at full capacity, we always have good alternatives to keep moving along.” That remote access from various locations, maintains Weigold, has a critical impact on patient care, too. “The online capability of IntelliSpace Portal on, for example, a laptop means we can increase our coverage, especially for emergency

cases,” he asserts – so urgent patients can receive the assessment they desperately need without compromise in quality.

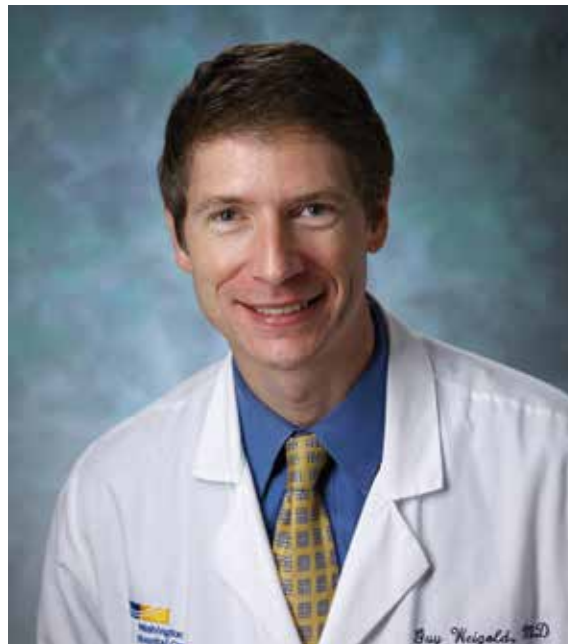
Designed for today and tomorrow

“Thought-out” is used again and again to describe IntelliSpace Portal. “It’s clear Philips listens to what people want so that new, relevant features can be included – and the staff to support it all,” remarks Fuisz. This version, notes Weissman, “adds a lot more capabilities, too, such as managing data from some other vendors.”

Philips users can skip the learning curve, devoting more time to analysis and interpretation. IntelliSpace Portal was new, but easy to adopt. “We didn’t need additional training – the transition was simple and lined up with our existing workflows,” recalls Weigold.

Benefits for Medstar Washington Hospital Center at a glance

- Increased focus on analysis and interpretation thanks to automation and smart viewing options
- Streamlined workflows and remote, multi-user access for fast treatment input
- New features and capabilities introduced with virtually no disruptions to workflow



Dr. Guy Weigold, M. D., FACC, FSCCT

Please visit www.philips.com/intellispaceportal



© 2013 Koninklijke Philips N.V.
All rights are reserved.

Philips Healthcare reserves the right to make changes in specifications and/or to discontinue any product at any time without notice or obligation and will not be liable for any consequences resulting from the use of this publication.

Philips Healthcare is part of Royal Philips

www.philips.com/healthcare
healthcare@philips.com

Printed in The Netherlands
4522 962 97961 * OCT 2013