



PHILIPS

dStream Head 32ch

MR coils

Advancing your **neurofunctional exams**

dStream Head 32ch coil for 3.0T systems with dStream

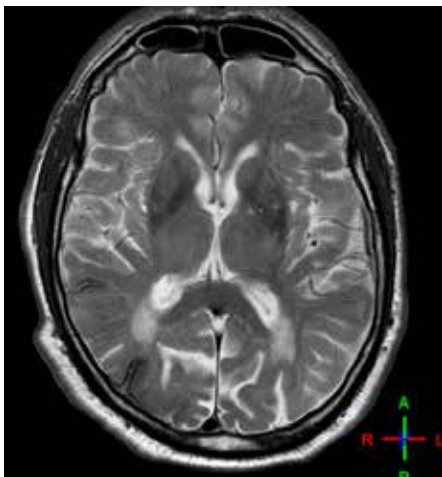
Key benefits

- Fully digital 32-element design for high SNR and fast scanning
 - Provides coverage from top of the head to the brain stem and cerebellum
 - Pathway for EEG leads is provided through outlet at the top of the coil
-

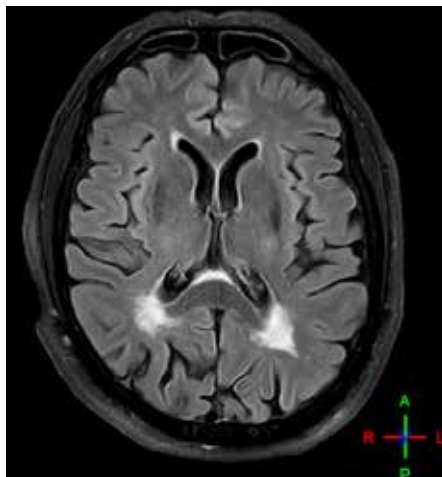
The dStream RF platform in your Philips MR system is a great foundation for advanced clinical applications. The 32-channel dStream (dS) Head coil leverages dStream technology and pushes your 3.0T system to new frontiers in neurofunctional exams. It is designed to provide high resolution volumetric imaging of the cortex, while maintaining an excellent signal-to-noise ratio (SNR) in the center of the brain. The coil supports detailed morphological and functional assessment of the brain, for instance, during pre-surgical planning. Fast scanning times are also possible through dS SENSE parallel imaging in all three measurement directions.

dStream Head 32ch coil

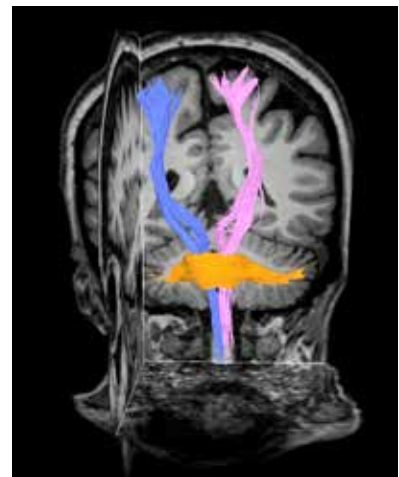
Coverage	Anterior cranium down to the zygomatic bone
Number of elements	32
Main application	Brain
Coil solution type	Dedicated
Data sampling	dStream digital broadband
Coil connection	2x Flex Connect
SENSE parallel imaging	dS SENSE enhanced parallel imaging performance
Other features	A dedicated mirror assembly for forward and rear vision is included in the package. EEG procedures are supported by a dedicated pathway for the EEG leads.



Axial T2w TSE
Resolution: 0.4 x 0.5 x 4.0 mm
Scan time: 3:21 min
Ingenia 3.0T
Courtesy: Hospital Q-scan, Australia



Axial 3D BrainView FLAIR
Resolution: 0.6 x 0.8 x 3.0 mm
Scan time: 3:46 min
Ingenia 3.0T
Courtesy: Hospital Q-scan, Australia



Diffusion Tensor Imaging (b800, 45 directions)
Resolution: 2.0 x 2.0 x 2.2 mm
Scan time: 9:59 min
Achieva dStream 3.0T

