



# Designed for imaging and biopsy procedures

Philips dStream Breast 7ch coil solution for Ingenia 1.5T / 3.0T

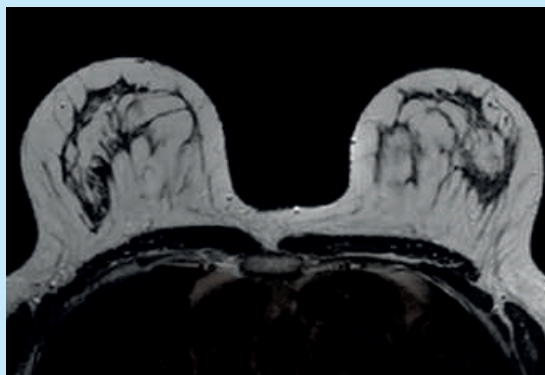
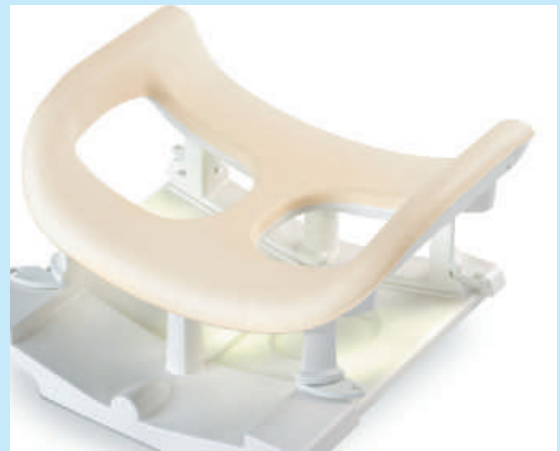
The dS Breast 7ch coil is a rigid, open-designed coil that can be used alone or in combination with FlexTrak Mammo. The coil is designed for excellent coverage into the axilla area with full access to the breasts for biopsy procedures. Immobilization plates are included to reduce motion artifacts. An adjustable head rest and soft patient ramp are included for patient comfort.

- Designed for outstanding imaging performance and biopsy procedures
- Coverage deep into the axilla area
- Offering excellent patient comfort with headrest and patient ramp

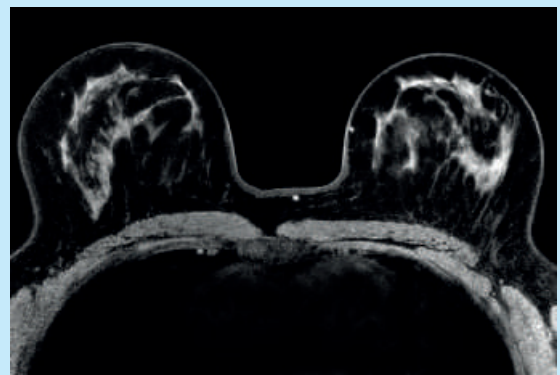
**PHILIPS**  
sense and simplicity

# dS Breast 7ch coil solution

Coverage	Bilateral
Max. number of channels	7
Main applications	Breast
Coil solution type	Dedicated
Coil connection	dStream Interface
SENSE parallel imaging	dS-SENSE enhanced parallel imaging performance
Other features	<ul style="list-style-type: none"><li>• Includes optimized patient comfort ramp.</li><li>• Includes immobilization plates in both RL and CC direction.</li><li>• Package includes breast biopsy kit.</li><li>• Integrated LED light offering clear view during biopsy procedure.</li></ul>



Axial T2w TSE



Axial eTHRIVE

Please visit [www.philips.com/Ingenia](http://www.philips.com/Ingenia)



© 2011 Koninklijke Philips Electronics N.V.  
All rights are reserved.

Philips Healthcare reserves the right to make changes in specifications and/or to discontinue any product at any time without notice or obligation and will not be liable for any consequences resulting from the use of this publication.

Philips Healthcare is part of Royal Philips Electronics

[www.philips.com/healthcare](http://www.philips.com/healthcare)  
[healthcare@philips.com](mailto:healthcare@philips.com)

Printed in The Netherlands  
4522 962 74991 \* JUL 2011