



Designed for superb diagnostic performance

Philips dStream Breast 16ch coil solution for Ingenia 1.5T / 3.0T

A dedicated breast coil that can be used alone or in combination with FlexTrak Mammo. The coil is designed to deliver high performance in coverage, image resolution and imaging speed. An adjustable head rest and soft patient ramp are included for patient comfort.

- Designed for high spatial and temporal resolution
- Coverage deep into the axilla area
- Offering excellent patient comfort with headrest and patient ramp

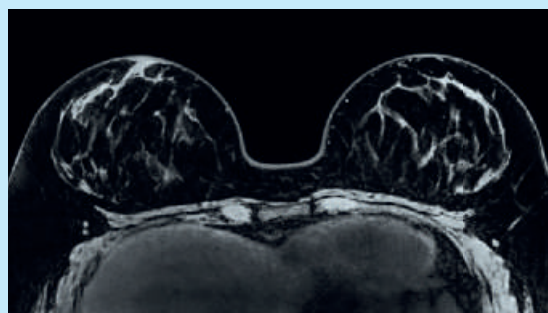
PHILIPS
sense and simplicity

dS Breast 16ch coil solution

Coverage	Bilateral
Max. number of channels	16
Main applications	Breast
Coil solution type	Dedicated
Coil connection	dStream Interface
SENSE parallel imaging	dS-SENSE enhanced parallel imaging performance
Other features	Includes patient comfort ramp



Axial T2w TSE



Axial eTHRIVE

Please visit www.philips.com/Ingenia



© 2011 Koninklijke Philips Electronics N.V.
All rights are reserved.

Philips Healthcare reserves the right to make changes in specifications and/or to discontinue any product at any time without notice or obligation and will not be liable for any consequences resulting from the use of this publication.

Philips Healthcare is part of Royal Philips Electronics

www.philips.com/healthcare
healthcare@philips.com

Printed in The Netherlands
4522 962 75001 * JUL 2011