

The iDose⁴ Premium Package is available for the Brilliance CT 64-channel scanner and across the Ingenuity and iCT families.



- iCT TVI
- iCT
- iCT SP



- Ingenuity CT
- Ingenuity Core¹²⁸
- Ingenuity Core



- Brilliance CT 64-channel with Essence technology
- Brilliance CT 64-channel
- Brilliance CT 40-channel*

**Philips Healthcare is part of
Royal Philips Electronics**

How to reach us

www.philips.com/healthcare
healthcare@philips.com

Asia

+49 7031 463 2254

Europe, Middle East, Africa

+49 7031 463 2254

Latin America

+55 11 2125 0744

North America

+1 425 487 7000

800 285 5585 (toll free, US only)



Introducing the iDose⁴ Premium Package

Please visit www.philips.com/iDose4PremiumPackage



© 2012 Koninklijke Philips Electronics N.V.
All rights are reserved.

Printed in The Netherlands.
4522 962 86521 * JUN 2012

Philips Healthcare reserves the right to make changes in specifications and/or to discontinue any product at any time without notice or obligation and will not be liable for any consequences resulting from the use of this publication.

*Requires prerequisite upgrade for iDose⁴ eligibility.

PHILIPS
sense and simplicity

Premium image quality

One glance tells the story

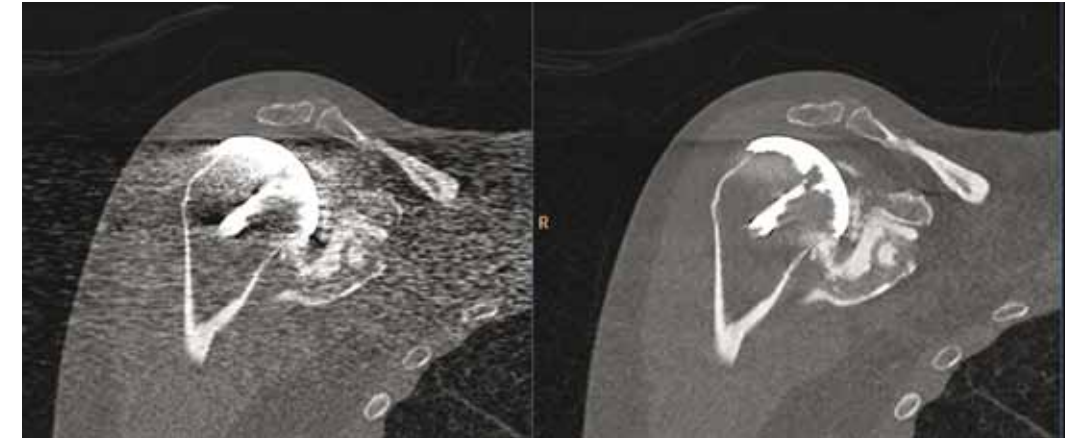
Artifacts from large metal objects such as orthopedic implants can be problematic in imaging. These artifacts typically result in loss of anatomical information, impeding visualization of tissue and critical structures. That is why Philips is offering the iDose⁴ Premium Package. iDose⁴, Philips' 4th-generation iterative reconstruction technique improves image quality** through artifact prevention and increased spatial resolution. O-MAR reduces artifacts caused by large orthopedic implants.



iDose⁴ and O-MAR off

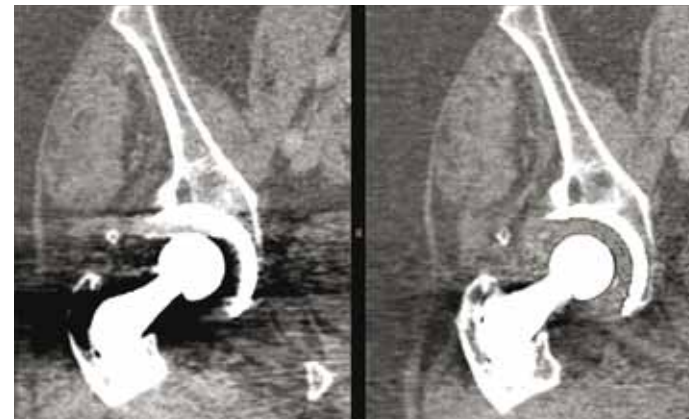


iDose⁴ and O-MAR on



iDose⁴ and O-MAR off

iDose⁴ and O-MAR on



iDose⁴ and O-MAR off

iDose⁴ and O-MAR on



iDose⁴ and O-MAR off

iDose⁴ and O-MAR on

High image quality with reduced artifacts.

** Improved image quality as defined by improvements in spatial resolution and/or noise reduction as measured in phantom studies.