



# Keeping watch at all times

Philips IntelliVue Guardian Solution

**PHILIPS**  
sense and simplicity

# The earlier, the better

## Identifying the right patient at the right time

The IntelliVue Guardian Solution is designed to aid easy and accurate detection of general floor patients at risk of deterioration, potentially helping avoid costly transfer or readmission to the ICU. The system is customized to your institution's protocol, facilitating appropriate intervention to help improve patient care, financial outcomes, and clinician workflow.

### IntelliVue Guardian Solution

IntelliVue Guardian Solution allows caregivers to automatically acquire vital signs, automate Early Warning Scoring (EWS) calculations, detect early signs of deterioration, and inform responsible clinicians for early, effective intervention.



### IntelliVue Guardian Software

The core of the solution.



### IntelliVue MP5SC patient monitor

Multi-patient spot-check with clinical decision support.



### IntelliVue Cableless Measurements

Measures vital signs without restricting patient mobility.





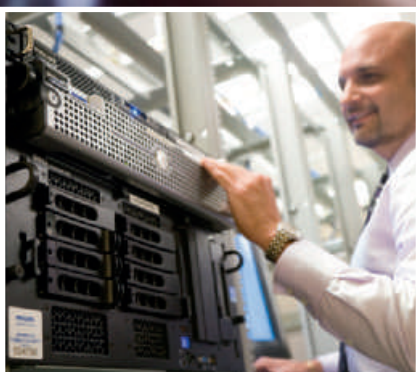
## Clinical realities on the general floor

Up to 17% of patients in the medical surgical areas of the hospital will face an unexpected complication.<sup>1</sup> But which of your patients belong to that 17%?

High throughput and reduced staffing in the general floor can make it very difficult to predict which patients to watch more closely. Up to 40% of unexpected deaths in hospitals occur on the general floor.<sup>2</sup>

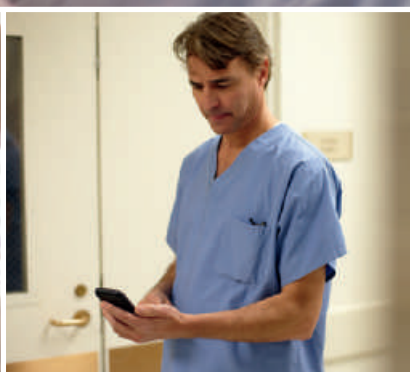
### The warning signs are there

Clinical instability is present and measurable prior to patient decline. In fact, warning signs of physiological decline typically appear six to eight hours prior to an event. If these signs are not recognized and acted upon, further deterioration can occur. Research suggests that 70% (45/64) of patients show evidence of respiratory deterioration within eight hours of cardiac arrest.<sup>3</sup> In two-thirds of cases (99/150), patients show abnormal signs and symptoms within six hours of arrest, while an MD is notified only 25% of the time (25/99).<sup>4</sup>



### IntelliBridge Enterprise

Connects IntelliVue Guardian Solution with hospital enterprise systems such as EMR and ADT.



### IntelliSpace Event Management

Manage critical communications with actionable information sent to the caregiver's mobile device.



### Clinical Services

Align the solution with your clinical practices.



### Value Added Services

Integration and implementation services for exceptional operation.

# Turn vital signs into vital action

## Early intervention puts time on your side

The IntelliVue Guardian Solution gives caregivers on general floors the tools to anticipate and address signs of deterioration quickly, aiding appropriate action for the appropriate patient at the appropriate time. The solution automates IntelliVue Guardian EWS with deterioration detection for IntelliVue MP5SC spot-check monitors and IntelliVue Cableless Measurements.



IntelliVue Cableless Measurements automatically check patient vital signs as frequently as you determine without restricting patient mobility.

## Greater awareness when it counts

Patient decline can be spotted through the use of EWS and proper notification to clinicians. EWS more reliably identifies patients at risk in order to trigger an appropriate and early response from the medical emergency Rapid Response Team. The use of these teams is gaining popularity due to their success in reducing unexpected ICU transfers.<sup>5</sup>



The flexible MP5SC patient monitor with built-in IntelliVue Guardian EWS can be used in spot-check as well as continuous monitoring mode.

## Measures of reassurance

The system detects significant deviations in a patient's vital signs readings, and automatically verifies the accuracy of the data by performing reassurance measurements – repeating the measurements at customized intervals. With IntelliVue Guardian Software at the core of this advanced early warning solution, if early signs of deterioration have been detected, the system informs the responsible caregiver via the hospital's alert notification system, delivering the notification to the mobile device of choice (digital pager, smartphone, tablet, etc).

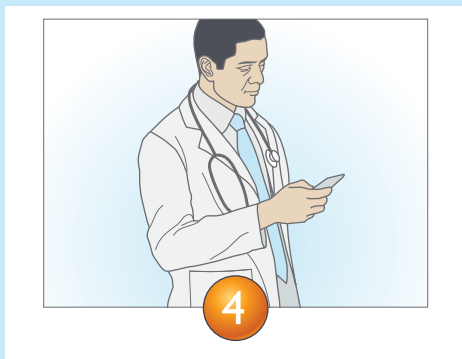
## Seamless care to follow your protocol



**12:00 AM**

### EWS 2 – No action needed

Patient vital signs taken with the IntelliVue MP5SC, which shows an EWS score of 2, displayed on the monitor with an 'action list' to contact the nurse in charge. EWS score captured by IntelliVue Guardian Software.



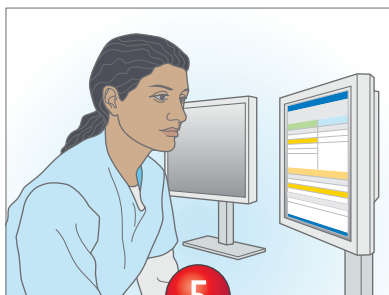
**2:00 AM**

### EWS 4 – Caregiver alerted/action taken according to protocol

With an EWS score of 4, the 'action list' calls for the nurse in charge to be contacted and vital signs taken more frequently, at intervals identified in the hospital protocol. EWS score is captured by IntelliVue Guardian Software, which uses IntelliSpace Event Management to alert the appropriate caregiver, who receives a notification via mobile device and responds to the alert.



After assessing the patient, the caregiver recommends more vigilant monitoring with the IntelliVue Cableless SpO<sub>2</sub> measurement. Light deterioration noted in vital signs. IntelliVue Cableless Measurements applied by clinician.



**6:00 AM**

**EWS 5 – Further action to prevent deterioration**

IntelliVue Cableless Measurements periodically measure and transmit patient vital signs to IntelliVue Guardian Software, which detects early signs of deterioration, and sends a deterioration warning via IntelliSpace Event Management, alerting the caregiver. An attended spot-check is performed and EWS is updated, showing an increase to 5.



**6:22 AM**

**EWS 5 – Further action to prevent deterioration**

The caregiver arrives and takes additional action – such as prescribing medication – to prevent the patient from further deterioration and a potential unexpected ICU readmission or transfer.



**8:00 AM**

**EWS 4 – Patient more stable, transfer to ICU unnecessary**

The caregiver takes patient vital signs, which show the EWS score has moved from 5 to 4, and directs that patient vitals and EWS be taken every 2 hours. Patient is more stable now, and an unexpected and costly transfer to ICU has been avoided.



# Your system, your way



## **Facilitates communication**

IntelliVue Guardian Solution enhances workflow on the general floor through automated messaging to caregivers using the hospital-paging infrastructure. IntelliSpace Event Management can manage alert notifications and deliver them to the care team's mobile devices of choice to improve communication and response at the right point of need – regardless of caregiver location.

## **Smooths workflows, reduces errors**

The solution reduces many of the manual tasks of documentation and calculation, possibly leading to reduced human error and saving clinician time.

## **Greater connectivity and compliance review**

IntelliVue Guardian Solution may help improve and document compliance with established patient safety standards by making it easier for caregivers to follow instructions to alert physicians when needed.

## **Helps standardize care and meet the Joint Commission goals**

Deploying EWS can help standardize care across your institution's facilities. The IntelliVue Guardian Solution also helps you meet Joint Commission goals:<sup>6</sup>

- Improve recognition and response to changes in a patient's condition
- Reduce risk of healthcare associated infections
- Improve accuracy of patient identification
- Improve effectiveness of communication among caregivers

## **Highly configurable**

The IntelliVue Guardian Solution features protocols that are highly configurable and adaptable to commonly used early warning score calculations, and can be customized to support variations of EWS protocols preferred by your hospital. Deploy the solution on your institution's hardware or virtualized environment using your LAN/WLAN infrastructure to easily manage:

- Admissions and unit census
- Caregivers, patient assignments, and care groups
- EWS protocols, synchronization with monitors
- Paging workflow, escalation
- Patients and data
- Devices and sensors
- HL7 export to EMR, HL7 import (ADT) from EMR

## **Support as you predict and prevent**

Philips clinical specialists will conduct an assessment of your current workflow and practices related to gathering data and identifying the trend of clinical deterioration. Philips will work with your clinical team to identify process changes that will have positive impact on the activation of your Rapid Response Teams, make recommendations, and develop customized configurations based on your specific EWS protocols. Philips clinical experts will plan, validate, and test the solution to facilitate a successful workflow transition.



**Philips Healthcare is part of  
Royal Philips Electronics**

**How to reach us**

[www.philips.com/healthcare](http://www.philips.com/healthcare)  
[healthcare@philips.com](mailto:healthcare@philips.com)

Asia  
+49 7031 463 2254

Europe, Middle East, Africa  
+49 7031 463 2254

Latin America  
+55 11 2125 0744

North America  
+1 425 487 7000  
800 285 5585 (toll free, US only)

1. Bellomo R, Goldsmith D, Russell S, Uchino S. Postoperative serious adverse events in a teaching hospital: a prospective study. *Med J Aust.* 2002; 176:216-218.
2. <http://ihi.org/IHI/Programs/StrategicInitiatives/TransformingCareAtTheBedside.htm>.
3. Schein RM, Hazday N, Pena M, et al. Clinical antecedents to in-hospital cardiopulmonary arrest. *Chest.* 1990;98:1388-1392.
4. Franklin C, Mathew J. Developing strategies to prevent in hospital cardiac arrest: analyzing responses of physicians and nurses in the hours before the event. *Crit Care Med.* 1994;22(2):244-247.
5. Sharek PJ, Parast LM, Leong K, et al. Effect of a rapid response team on hospital-wide mortality and code rates outside the ICU in a children's hospital. *JAMA.* 2007;298(19):2267-2274.
6. <http://www.jointcommission.org/>.

Please visit [www.philips.com/intellivueguardiansolution](http://www.philips.com/intellivueguardiansolution)



© 2011 Koninklijke Philips Electronics N.V.  
All rights are reserved.

Philips Healthcare reserves the right to make changes in specifications and/or to discontinue any product at any time without notice or obligation and will not be liable for any consequences resulting from the use of this publication.

Printed in The Netherlands.  
4522 962 73871 \* NOV 2011