

FieldStrength

Publication for the
Philips MRI Community

ISSUE 47 – 2012/3

NetForum has a lot to offer for Philips MR users



This article is part of FieldStrength issue 47
2012/3

NetForum has a lot to offer for Philips MR users

Join the online community for users of Philips MR, CT and NM systems

NetForum is the online community for users of Philips MR, CT and NM systems. NetForum content helps you to learn more about Philips products from the people whose opinions you value the most: your peers. The content is organized in three sections: Explore, Operate and Grow. Learn more and sign up at:

www.philips.com/netforum

EXPLORE

Share clinical results

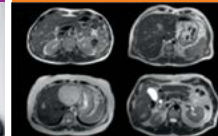


Explore clinical cases and shared experiences on Philips imaging systems.

Clinical News, Case Studies, Best Practices, Webinars, Publications, Abstracts and more.

OPERATE

Support your scanning



Download ExamCards and tools to enhance image quality and increase scan efficiency.

ExamCards, Protocols, Application Tips, Product Training and more.*
*Requires registration

GROW

Support your business



Grow your practice by optimizing system performance now and over the long term.

Utilization Services, workflow papers and more.*
*Requires registration

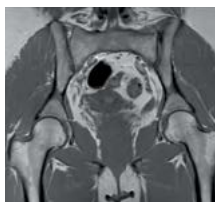
Don't miss this on NetForum



An increasing number of Ingenia ExamCards

New [Ingenia ExamCards](#) have been added every month in the past period. Check back regularly to see which new ExamCards you can download. Or share your own favorite Ingenia ExamCard on NetForum.

Get there via: [Operate](#) > [ExamCards](#) > [MRI](#)



Interesting musculoskeletal content

Review the [MRI musculoskeletal](#) materials on NetForum. New content is added continuously for different system types. See for instance the [Achieva 1.5T Zimmer knee protocol](#), the [metal artifact reduction ExamCard](#) and [application tip](#), or the latest [Ingenia additions](#).

Get there via: [Operate](#) > [MRI](#) > [Musculoskeletal](#)

Most popular MRI NetForum contributions in 2nd/3rd quarter of 2012

1. [Clinical News](#) [NetForum reaches 20,000 registered users](#)
2. [Application Tip](#) [Metal artifact reduction for MRI of metal prostheses and implants](#)
3. [ExamCard](#) [1.5T Hip with prosthesis using MARS protocol](#)
4. [Application Tip](#) [Tips for body diffusion weighted imaging \(DWI\)](#)
5. [ExamCard](#) [Ingenia 3.0T Lumbar spine in obese patient - Trier](#)