



PHILIPS

dS FootAnkle 16ch

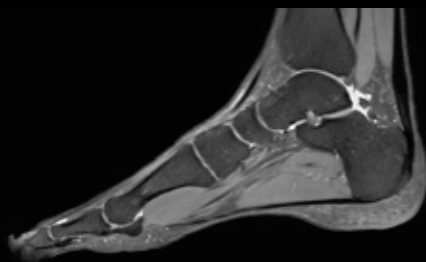
MR Coil

Designed for **high resolution imaging**

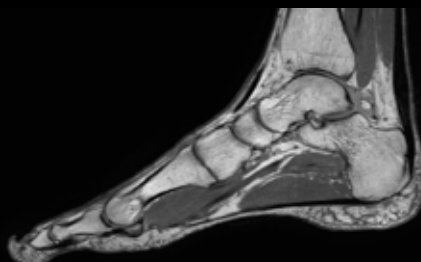
A ski-boot shaped coil designed for optimum coverage and high resolution visualization of detailed cartilage structures in the ankle and entire foot up to the toes, also in large foot sizes. The coil design and element layout allow for either large field of view (FOV) imaging of the whole foot or small FOV high resolution imaging of ankle joints. The coil is easy to set up, even for tall patients. Patient's foot can be positioned vertically or in a comfortable angle of up to 20 degrees plantar flexed towards the sole. The coil can be tilted in vertical position to further promote patient comfort.

dS FootAnkle 16ch

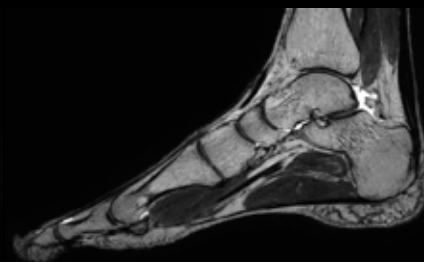
System configuration	1.5T systems with dStream.
Main applications	Foot, ankle, toes.
Coverage	32 cm in AP direction, 24 cm in FH direction.
Maximum nr. of channels	16.
Coil type	Dedicated.
Data sampling	dStream digital broadband.
Parallel imaging	dS SENSE enhanced parallel imaging performance.



Sagittal 3D VIEW - PDw SPAIR
0.7 x 0.7 x 0.7 mm, 5:42 min
Ingenia 1.5T



Sagittal 3D VIEW - PDw TSE
0.5 x 0.5 x 0.5 mm, 5:28 min
Ingenia 1.5T



Sagittal 3D VIEW - T2w TSE
0.7 x 0.7 x 0.7 mm, 5:29 min
Ingenia 1.5T