




Product name	IGC magnet Rex 3.0 T
Identification code(s)	Philips code/part numbers: 4522 132 15871 / 9896 030 13441 4522 132 67661 / 9896 030 18161
Total weight [kg]	< 4700 kg (approximately 4500 kg typical)
Manufacturer	IGC (Intermagnetics General Corporation)
Address	450 Old Niskayuna Road, P.O. Box 461, Latham
Zip code	NY 12110-0461
Country	U.S.A.
Electronic info	IGC_Magnet Rex 3.0T.pdf


Recycling information

Special Attention	Items	Location
	Before dismantling the magnet, the helium shall be safely vented (into atmosphere or collected for recovery purposes).	See figures
	Before dismantling the magnet, the vacuum shall be safely released and the magnet shall be allowed to warm up to room temperature.	See figures
	Before dismantling coldhead, gas lines or compressor, the pressurized helium gas shall be released safely	See figures

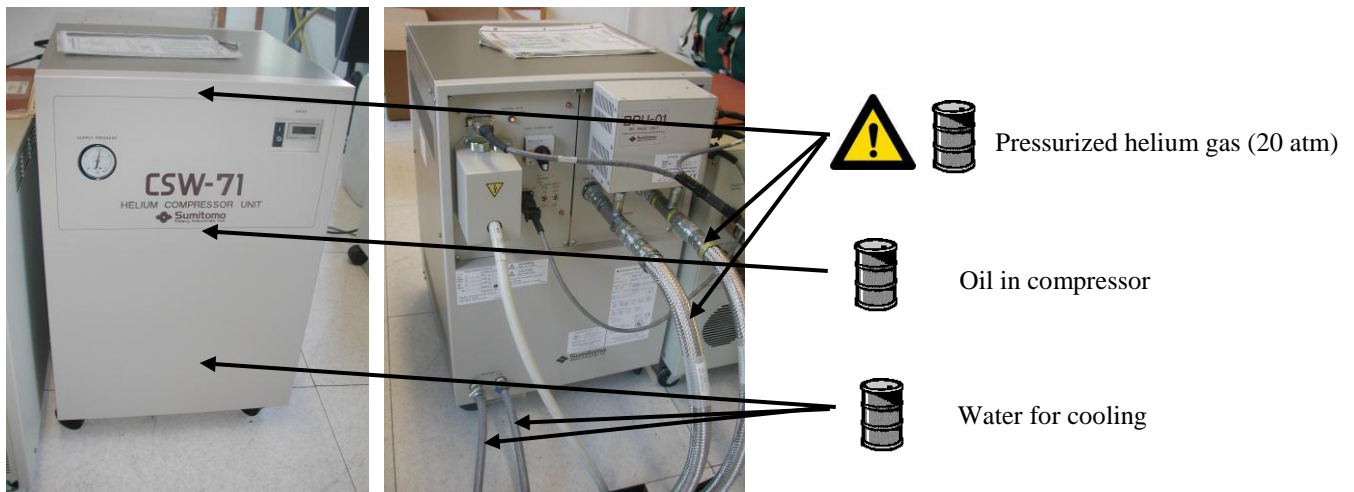
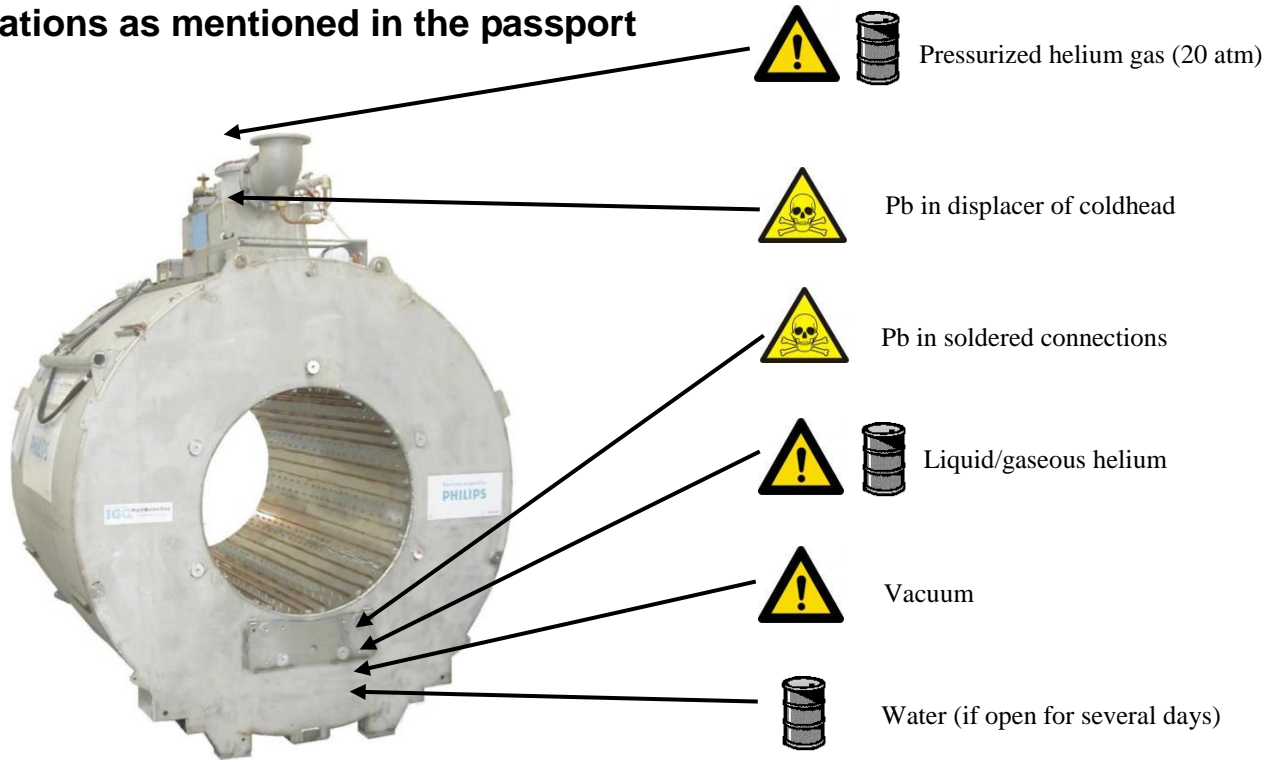
Batteries	Items, type	Location
	10 lithium batteries of type BR-A (yellow) in the RMMU	See figures
	1 lithium battery of type VL (button battery) in the RMMU	See figures
	1 lithium battery of type CR-2477, 3V (button battery) in the hours counter of the compressor	See figures

Hazardous substances	Items	Location
	Lead (Pb) is present in the solder at connections and connectors of the internal magnet wiring.	See figures
	Lead (Pb) is present in the displacer of cold head	See figures
	Printed circuit boards are present in the RMMU	See figures
	Printed circuit boards are present in the compressor	See figures

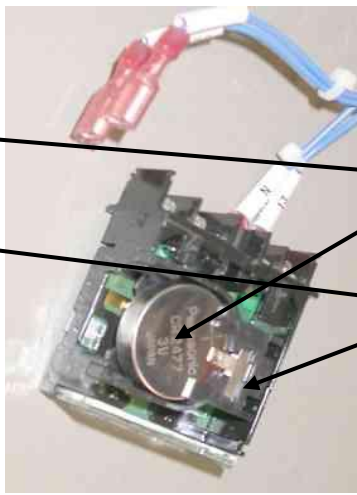
Name:	Recycling passport IGC magnet Rex 3.0T	12NC:	4522 132 15870	Version: 01
Author:		Pag.: 1 of 3	Group No: 5790	Doc.Date: 2007-05-31
			Section: -	Status: Authorized

Fluids and gases	Items	Location
	The magnet (if still cold) contains liquid helium.	See figures
	Coldhead, gas lines, and compressor contain pressurized helium gas	See figures
	Certain components of the compressor contain oil	See figures
	Magnet may contain water if it was open for several days	See figures
	The compressor may contain regular water in the cooling circuit.	See figures

Locations as mentioned in the passport



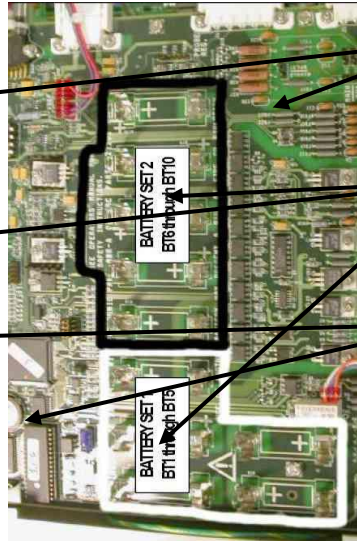
Name: Recycling passport IGC magnet Rex 3.0T	12NC: 4522 132 15870	Version: 01 Doc.Date: 2007-05-31
Author:	Pag.: 2 of 3	Group No: 5790 Section: - Status: Authorized



1 x lithium CR-2477 in hrs counter



Printed circuit boards



Printed circuit boards in RMMU



10 x lithium BR-A in RMMU



1 x lithium VL in RMMU

--- End of document ---

Name: Recycling passport IGC magnet Rex 3.0T		12NC: 4522 132 15870		Version: 01 Doc.Date: 2007-05-31	
Author:		Pag.: 3 of 3	Group No: 5790	Section: -	Status: Authorized