



<b>Product name</b>	<b>Liquid cooling cabinet II (LCC II) – SHI + APD</b>
Identification code(s)	989603020301; 989603020541; 989603019941; 989603020131
Total weight [kg]	380 kg
<b>Manufacturer</b>	<b>Glen Dimplex Deutschland GmbH</b>
Address	Am Goldenen Feld 18
Zip code	95326 Kulmbach
Country	Germany
Electronic info	Recycling Passport_LCC II.doc


## Recycling information

Special Attention	Items	Location
	Ensure unit is drained of cooling fluids	Liquid circuits

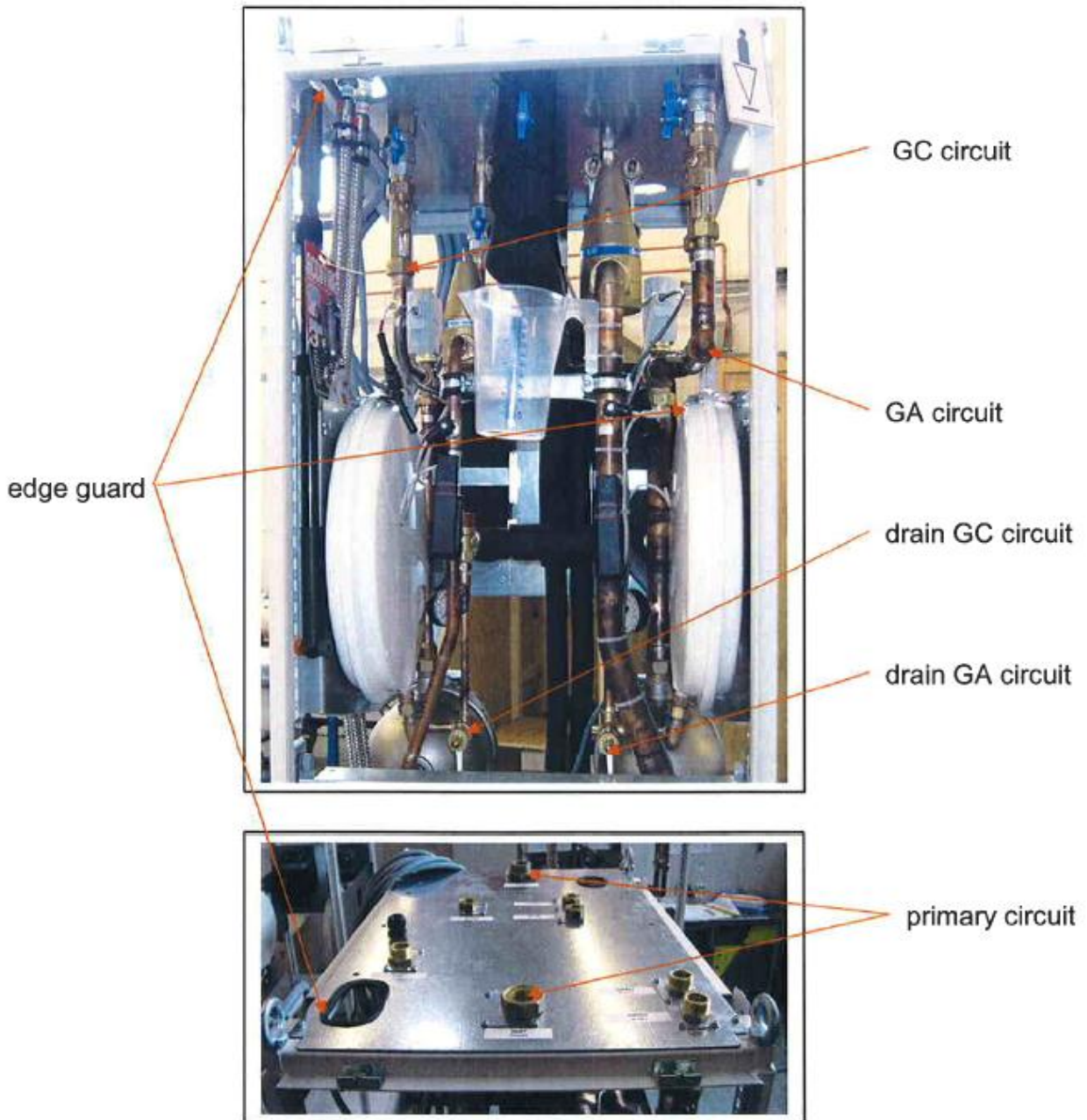
Batteries	Items, type	Location
	Not applicable	

Fluids and gases	Items	Location
	Dowtherm SR-1 in secondary GA – circuit. Properties: Ethylene glycol 50%/50% with additives, manufacturer Dow Chemical	Fluid lines, pump Secondary, Expansion vessel
	Water with Biozid and Inhibitor in secondary GC – circuit. Properties: <b>Biocide:</b> <b>0,01% (4 ml / 40 l) of NX1164 or NX1106</b> <b>Inhibitor:</b> <b>0,025% (10 ml / 40 l) of AZ8104</b>	Fluid lines, pump Secondary, Expansion vessel
	Residual primary cooling fluid: water with 0 to 39 vol-%(ethylene) glycol and possibly other unknown additives	Fluid lines Primary

Name: <b>Recycling Passport LCCII</b>		12NC: <b>9896 030 20300</b>		Version: <b>01</b> Doc.Date: <b>2009-08-11</b>	
Author:		Pag.: <b>1 of 3</b>	Group No: 5790	Section: -	Status: <b>Approved</b>

Hazardous substances	Items	Location
	PBB and PBDE could be elements of PVC in edge guard	Edge guard

**Locations as mentioned in the Passport**



Name:	<b>Recycling Passport LCCII</b>	12NC:	<b>9896 030 20300</b>	Version: <b>01</b>	Doc.Date: <b>2009-08-11</b>
Author:		Pag.: <b>2 of 3</b>	Group No: 5790	Section: -	Status: <b>Approved</b>



drain primary  
circuit

<END OF DOCUMENT>

Name: <b>Recycling Passport LCCII</b>		12NC: <b>9896 030 20300</b>		Version: <b>01</b> Doc.Date: <b>2009-08-11</b>	
Author:		Pag.: <b>3 of 3</b>	Group No: 5790	Section: -	Status: <b>Approved</b>