



See further. Go beyond.

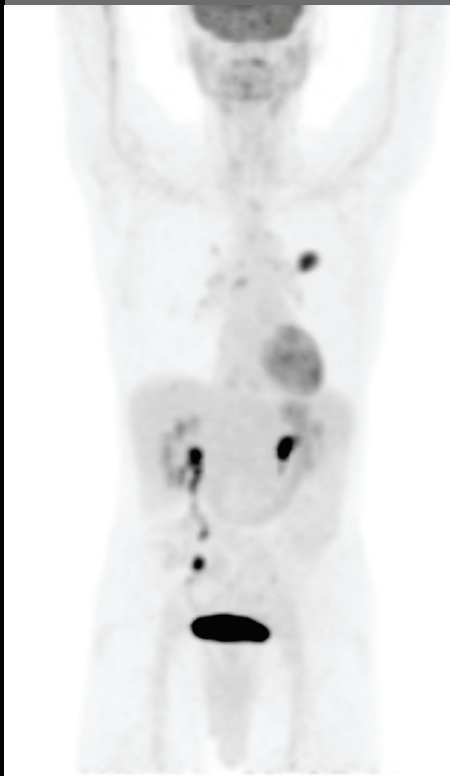
Philips Vereos PET/CT

PHILIPS

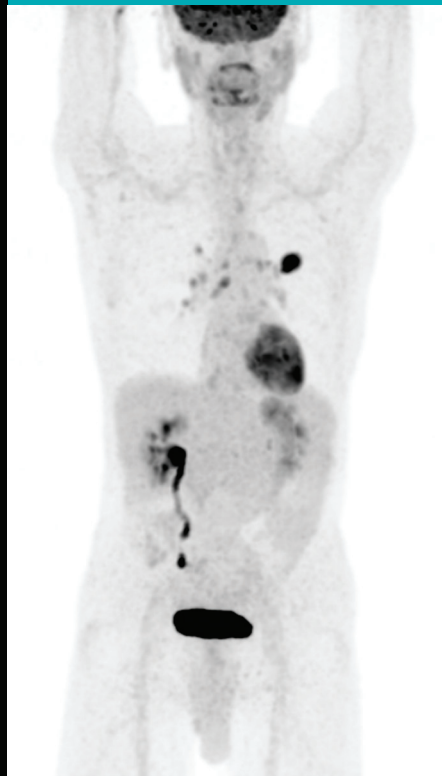
See what you've been missing with the world's only digital PET/CT

The new **Vereos PET/CT** takes a leap forward by giving you improved contrast and superb SUV quantitation. It positions you to go beyond the current limitations in PET/CT imaging and improve patient care.

Analog PET Scan*



Vereos Digital PET Scan



**Vereos sensitivity gain
Up to ~ 2x greater.**

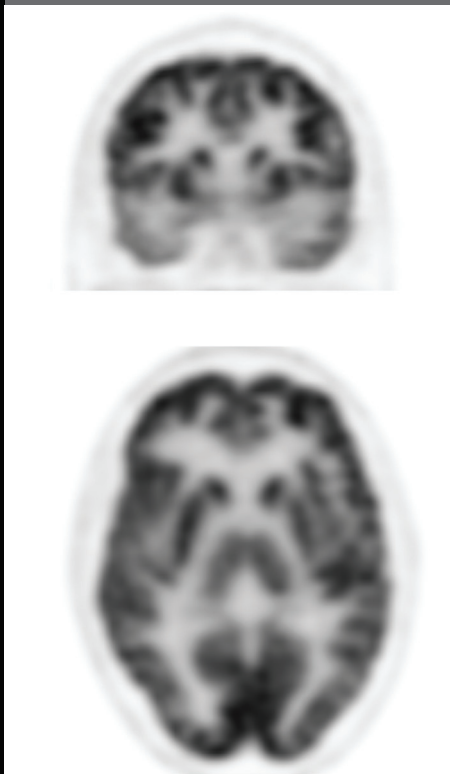
See more with a faster Time-of-Flight

Seeing further requires faster Time-of-Flight (TOF) performance. Vereos PET/CT has it, providing you greater sensitivity gain than analog systems.* This data, which is a result of the improved sensitivity gain, enables you to achieve improved image quality. Our faster TOF performance can also help you manage examination time, giving you quick exams and fast results.

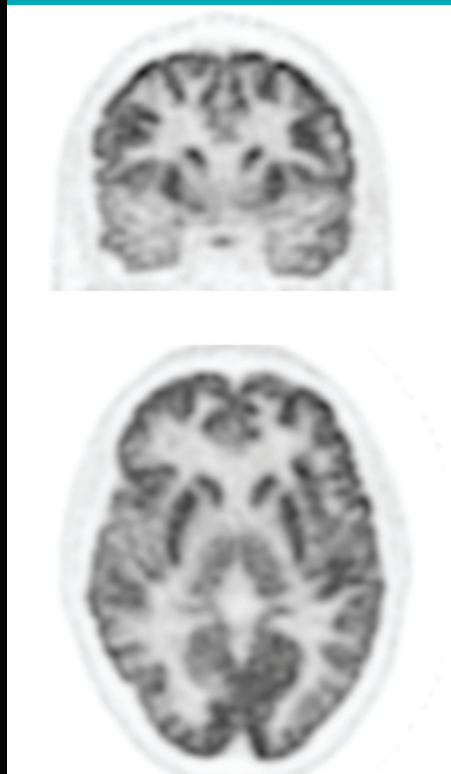
At the core of the Vereos revolution is our proprietary Digital Photon Counting (DPC) technology. Compared to analog*, our DPC technology improves performance in three key parameters:

- ≈ 2x volumetric resolution
- ≈ 2x sensitivity gain
- ≈ 2x quantitative accuracy

Analog PET Scan*



Vereos Digital PET Scan

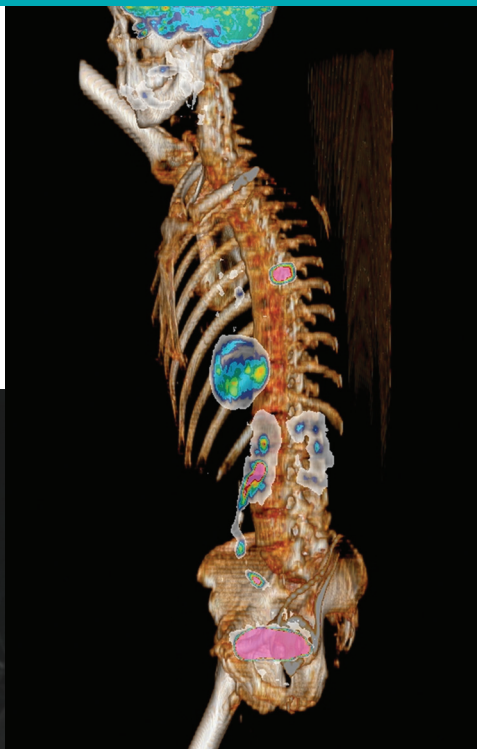
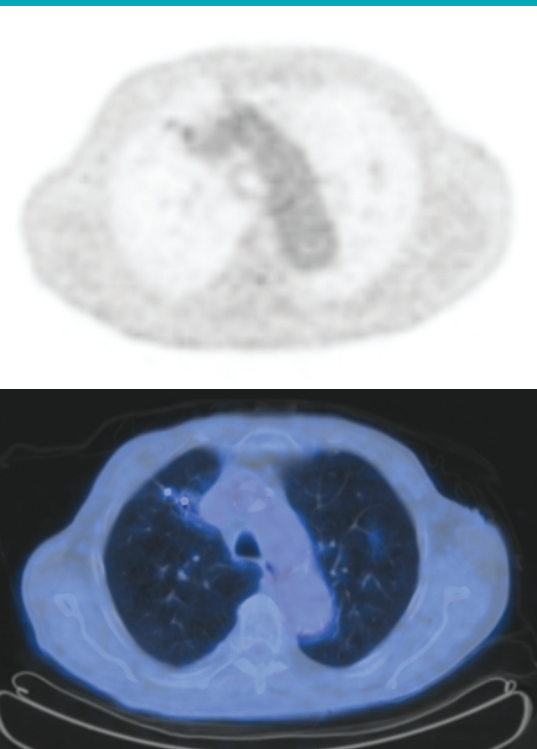


Vereos volumetric resolution
Up to ~ 2x greater.

See your clinical role expand

Philips supports your clinical excellence and your role as a partner with other clinicians in improving patient care. Vereos PET/CT can help you take your diagnostic confidence to the next level.

Vereos Digital PET



Accurate quantitation using Vereos PET/CT can enhance your position as a preferred site for clinical referrals by offering:

- Enhanced collaboration
- Enhanced treatment planning
- Increased diagnostic confidence

Vereos PET/CT can also help you improve workflow efficiency and patient management through:

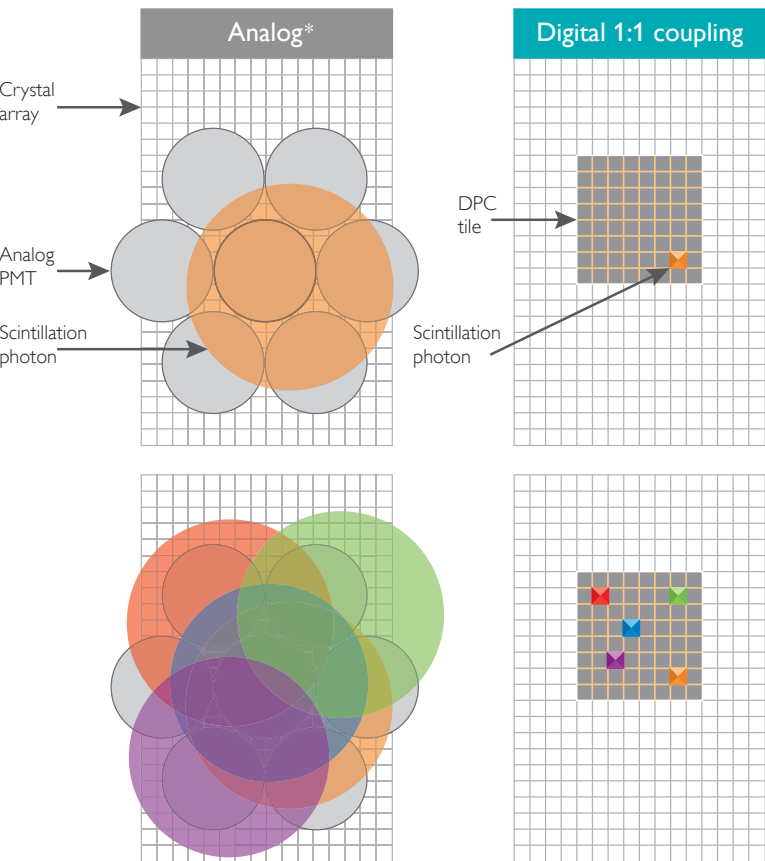
- Fast workflows
- Fast scans using shortest bore in the industry
- High image quality at low dose (with iDose⁴ Premium Package)

	Vereos*
Number of detectors	23,040
System spatial resolution	4.0 mm
Effective system sensitivity	>21,000 cps/MBq
Effective system sensitivity/cm	>1,304 cps/MBq
Effective peak NECR	>500 kcps
Maximum trues	>700 kcps
System timing resolution	345 ps
Quantitative accuracy	+/- 5%

* Preliminary performance data subject to change

Philips exclusive Digital Photon Counting (DPC) technology

Our revolutionary digital breakthrough in PET imaging.



DPC converts scintillation light directly to a digital signal, with zero analog noise.

DPC reduces the traditional tradeoffs between sensitivity gains and resolution gains.

DPC compared to analog* enables:

- Faster TOF
- Faster timing resolution
- Faster post-processing and image fusion
- Faster throughput and workflow

Resolution gains	Sensitivity gains	Quantitative gains
<p>Our DPC technology is the only true digital detection technology available in the industry. The system uses 1:1 coupling of scintillators to digital detectors. That means spatial, timing, and energy resolution is improved throughout the entire multi-dimensional field of view, for improved volumetric resolution.</p>	<p>Our DPC technology converts light directly to a digital signal. Because there is virtually no noise introduced in this conversion, the system improves the signal-to-noise ratio which enables improved sensitivity. Coupled with fast timing resolution, image contrast improves leading to potentially enhanced lesion detectability.</p>	<p>Our DPC technology provides a linear count rate performance, which makes the peak count rate higher. An increased rate plus fast timing resolution capabilities gives an improvement in quantitative accuracy. These combine for an improvement in quantitative accuracy. The imaging chain maintains digital data integrity through the entire imaging chain. Add to that our reconstruction, and you get outstanding images with fast post-processing.</p>
≈ 2x volumetric resolution	≈ 2x sensitivity gain	≈ 2x quantitative accuracy

See how your patients benefit

Your patients can benefit from the revolutionary Vereos PET/CT system.

- **iPatient.** iPatient offers personalized patient-centric workflow built for iterative reconstruction techniques and high image quality at low dose levels to drive confidence and consistency 24/7.
- **iDose⁴ Premium Package.** iDose⁴ improves image quality* through artifact prevention and increased spatial resolution at low dose. O-MAR reduces artifacts caused by large orthopedic implants. Together they produce high image quality with reduced artifacts.
- **Faster scanning.** Patients spend less time in scanner.
- **Shortest bore available in industry.** Less time in bore may enhance patient comfort.
- **Gentle lighting.** An improved industrial design contributes to your patients' peace of mind.

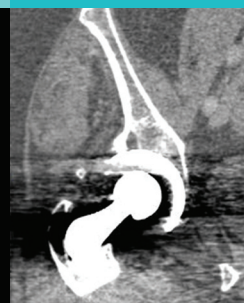


iPatient – patient-centric workflow

The screenshot displays the iPatient software interface. At the top, there are tabs for 'New', 'Current', 'Anonymous', and 'Worklist'. Below this is a 'Demographics' section with fields for Patient ID (00000001), Last Name (SERVICE_Anonymous), First Name (Unknown), Gender (Male), Date of Birth (1950 / 06 / 13), Age (62Y), Age Group (Adult), Weight (81 [kg]), and Height (170 [cm]). There are also fields for Accession Number, Procedure Description (Body PET/CT), Referring Physician, Requesting Physician, Operator Name, Voice Language (English), and a 'Continue previous exam' checkbox. A 'Find Patient' button is present. Below the demographics section is a 'Suggested Exam Cards' section with icons for Head, Ear, Neck, Thorax, Cardiac, Spine, Abdomen, Orthoped, Interventi..., PET Body, and PET MI. A 'User Exam Cards' section is also visible. At the bottom, there is a 'Select Exam Card' button and a date/time stamp (05/29/13 09:56:36).

iPatient Exam Cards provide easy PET/CT acquisition setup. Customized Exam Cards may be created to suit your preference.

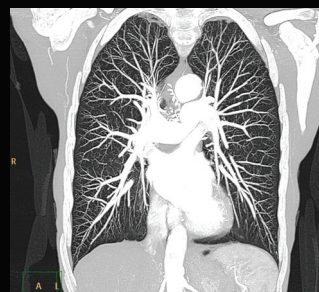
Without O-MAR



With O-MAR



O-MAR improves visualization in the presence of large metal orthopedic implants.



Superb diagnostic CT detail, fast scanning, low radiation dose.

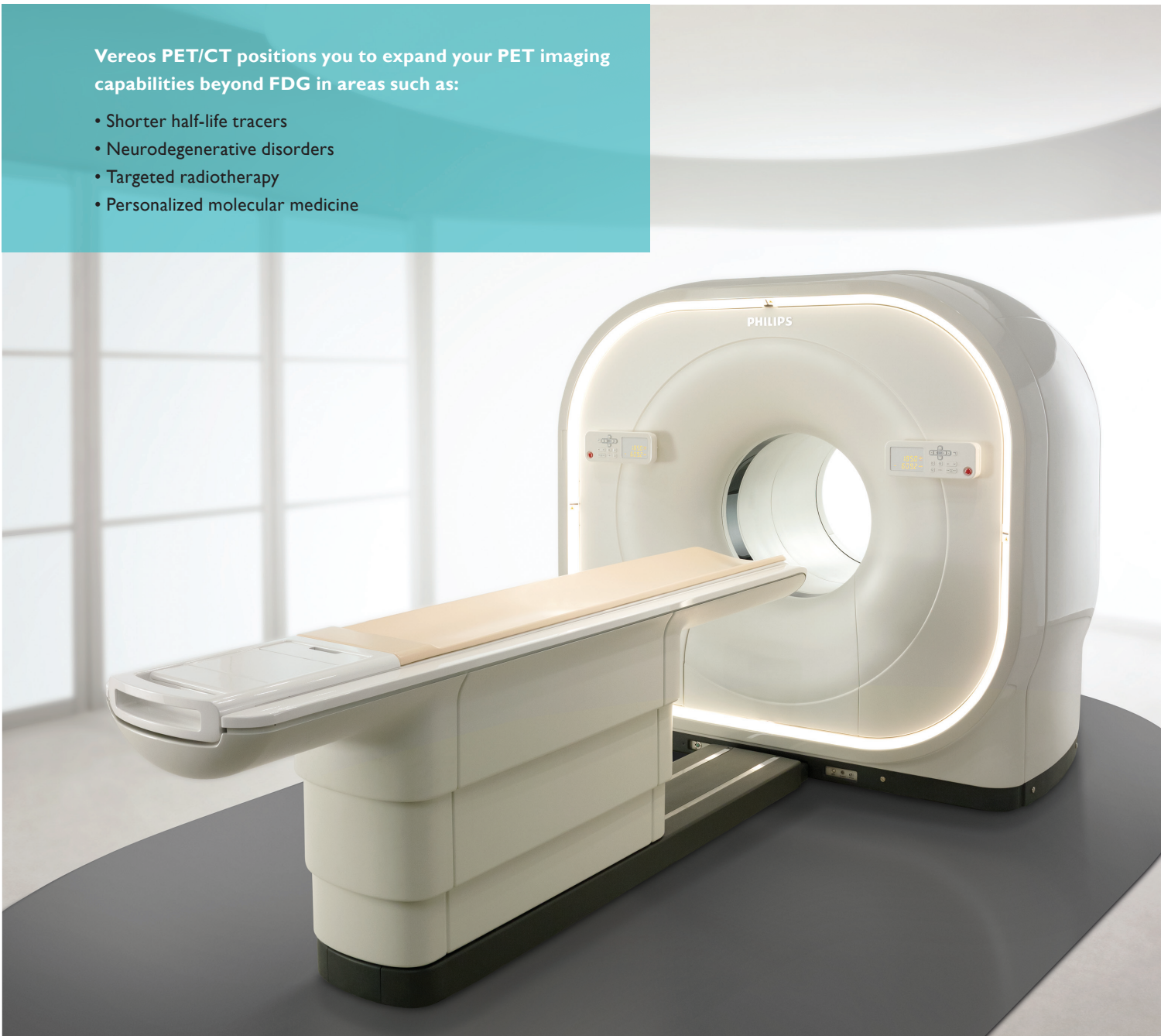
*Improved image quality is defined by improvements in spatial resolution and/or noise reduction as measured in phantom studies.

Go beyond in your practice

Expand your leadership as far as your vision takes you in molecular imaging and personalized medicine.

Vereos PET/CT positions you to expand your PET imaging capabilities beyond FDG in areas such as:

- Shorter half-life tracers
- Neurodegenerative disorders
- Targeted radiotherapy
- Personalized molecular medicine





The images and descriptions contained herein provide technical specifications and optional features which may not be included with the standard system configuration. Contact your local Philips Representative for complete specific system details.

Some or all of the products, features, and accessories shown or described herein may not be available in your market. Please contact your local Philips Representative for availability.

Philips Healthcare is part of Royal Philips

How to reach us: www.philips.com/healthcare • healthcare@philips.com

Asia: +49 7031 463 2254 • Europe, Middle East, Africa: +49 7031 463 2254

Latin America: +55 11 2125 0744 • North America: +1 425 487 7000 or 800 285 5585 (toll free, US only)



© 2014 Koninklijke Philips N.V. All rights reserved.

Philips Healthcare reserves the right to make changes in specifications and/or to discontinue any product at any time without notice or obligation and will not be liable for any consequences resulting from the use of this publication.

Printed in The Netherlands.
4522 962 98357 * MAR 2014