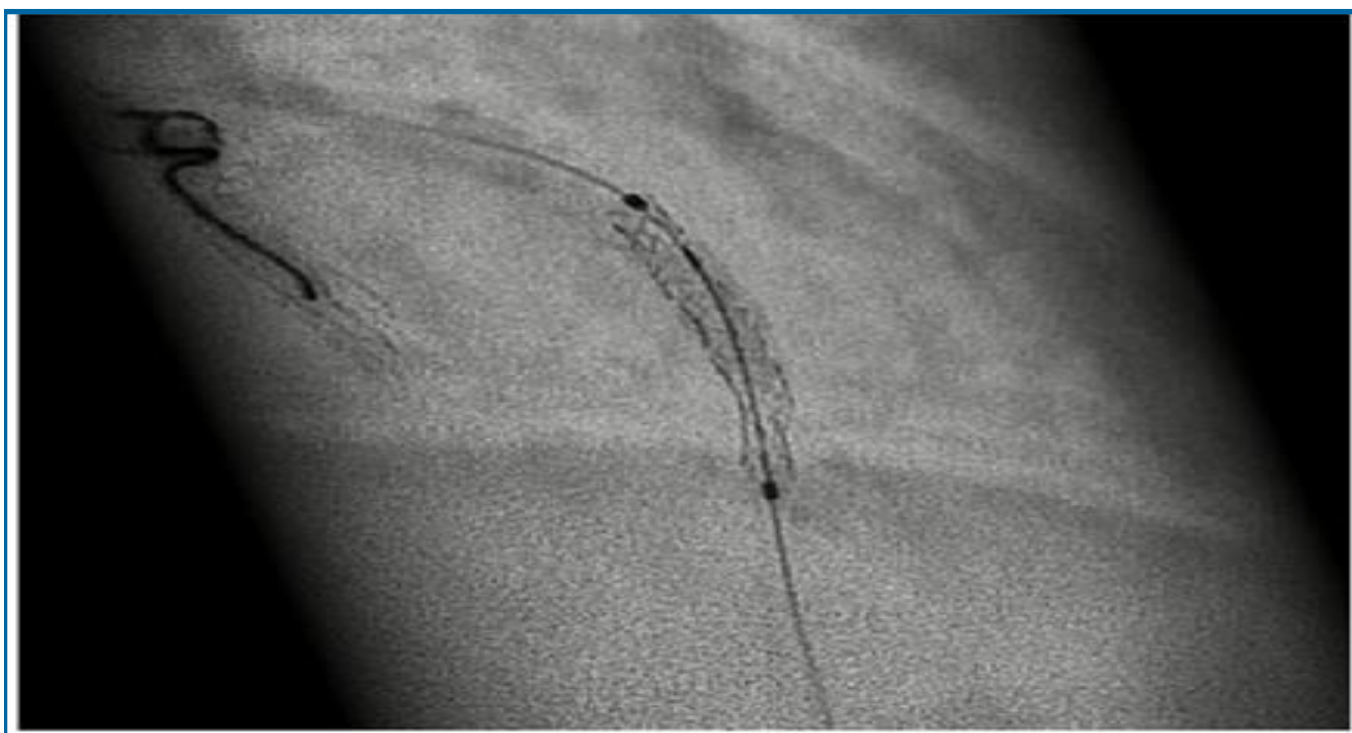


# DICOM Conformance Statement

## StentBoost Live R2.1



*- This page is left intentionally empty -*

## 1. DICOM Conformance Statement Overview

The StentBoost Live R2.1 is a software medical device intended to provide enhanced visualization of stents in coronary vessels. The StentBoost Live R2.1 is used in combination with a Philips Interventional X-Ray system.

The StentBoost Live R2.1 automatically creates DICOM objects (Secondary Captures/ Multiframe Secondary Captures) at the end of the acquisition run, which are automatically archived to a configured PACS.

The StentBoost Live R2.1 supports the following DICOM functionality:

Secure DICOM transfers: secure transfer of DICOM data between the clinical product and other DICOM compliant devices on the network. The data is sent as a Secondary Capture DICOM Images for screenshots and Multiframe Secondary Capture DICOM images for movies.

**Table 1: Network Services**

SOP Class		User of Service (SCU)	Provider of Service (SCP)	Display
Name	UID			
<b>Other</b>				
Verification SOP Class	1.2.840.10008.1.1	Yes	Yes*	No
<b>Transfer</b>				
Multiframe True Color Secondary Capture Image Storage	1.2.840.10008.5.1.4.1.1.7.4	Yes	No	No
Secondary Capture Image Storage SOP Class	1.2.840.10008.5.1.4.1.1.7	Yes	No	No
<b>Workflow Management</b>				
Storage Commitment Push Model SOP Class	1.2.840.10008.1.20.1	Yes	No	No

Note\*: Verification as SCP is supported only as part of asynchronous storage commitment.

**2. Contents**

- 1. DICOM Conformance Statement Overview ..... 3
- 2. Contents ..... 4
- 3. Introduction..... 5
  - 3.1. Revision History .....5
  - 3.2. Audience .....5
  - 3.3. Remarks .....5
  - 3.4. Definitions, Terms and Abbreviations .....6
  - 3.5. References .....6
- 4. Networking ..... 7
  - 4.1. Implementation model .....7
    - 4.1.1. Application Data Flow .....7
    - 4.1.2. Functional Definition of AE's .....7
    - 4.1.3. Sequencing of Real World Activities .....8
  - 4.2. AE Specifications .....8
    - 4.2.1. StentBoost Live R2.1 Network AE .....8
      - 4.2.1.1. SOP Classes .....9
      - 4.2.1.2. Association Policies .....9
      - 4.2.1.3. Association Initiation Policy .....10
      - 4.2.1.4. Association Acceptance Policy .....17
  - 4.3. Network Interfaces .....19
    - 4.3.1. Physical Network Interfaces .....19
    - 4.3.2. Additional Protocols .....20
  - 4.4. Configuration .....20
    - 4.4.1. AE Title/Presentation Address Mapping .....20
      - 4.4.1.1. Local AE Titles .....20
      - 4.4.1.2. Remote AE Title/Presentation Address Mapping .....20
    - 4.4.2. Parameters .....20
- 5. Media Interchange ..... 22
- 6. Support of Character Sets ..... 23
- 7. Security ..... 24
  - 7.1. Security Profiles .....24
    - 7.1.1. Security use Profiles .....24
    - 7.1.2. Security Transport Connection Profiles .....24
    - 7.1.3. Digital Signature Profiles .....26
    - 7.1.4. Media Storage Security Profiles .....26
    - 7.1.5. Attribute Confidentiality Profiles .....26
    - 7.1.6. Network Address Management Profiles .....26
    - 7.1.7. Time Synchronization Profiles .....26
    - 7.1.8. Application Configuration Management Profiles .....26
    - 7.1.9. Audit Trail Profiles .....26
  - 7.2. Association Level Security .....27
  - 7.3. Application Level Security .....27
- 8. Annexes of application "StentBoost Live" ..... 28
  - 8.1. IOD Contents .....28
    - 8.1.1. Created SOP Instance .....28
      - 8.1.1.1. List of created SOP Classes .....28

### 3. Introduction

The introduction specifies product and relevant disclaimers as well as any general information that the vendor feels is appropriate.

#### 3.1. Revision History

The revision history provides dates and differences of the different releases.

**Table 2: Revision History**

Document Version	Date of Issue	Description of change
01	29-Mar-2023	First release for StentBoost Live R2.1

#### 3.2. Audience

This Conformance Statement is intended for:

- (Potential) customers
- System integrators of medical equipment
- Marketing staff interested in system functionality
- Software designers implementing DICOM interfaces

It is assumed that the reader is familiar with the DICOM standard.

#### 3.3. Remarks

The DICOM Conformance Statement is contained in chapter 4 through 8 and follows the contents and structuring requirements of DICOM PS 3.2.

This DICOM Conformance Statement by itself does not guarantee successful interoperability of Philips equipment with non-Philips equipment. The user (or user's agent) should be aware of the following issues:

- **Interoperability**  
Interoperability refers to the ability of application functions, distributed over two or more systems, to work successfully together. The integration of medical devices into an IT environment may require application functions that are not specified within the scope of DICOM. Consequently, using only the information provided by this Conformance Statement does not guarantee interoperability of Philips equipment with non-Philips equipment.  
It is the user's responsibility to analyze thoroughly the application requirements and to specify a solution that integrates Philips equipment with non-Philips equipment.
- **Validation**  
Philips equipment has been carefully tested to ensure that the actual implementation of the DICOM interface corresponds with this Conformance Statement.  
Where Philips equipment is linked to non-Philips equipment, the first step is to compare the relevant Conformance Statements. If the Conformance Statements indicate that successful information exchange should be possible, additional validation tests will be necessary to ensure the functionality, performance, accuracy and stability of image and image related data. It is the responsibility of the user (or user's agent) to specify the appropriate test suite and to carry out the additional validation tests.
- **New versions of the DICOM Standard**  
The DICOM Standard will evolve in future to meet the user's growing requirements and to incorporate new features and technologies. Philips is actively involved in this evolution and plans to adapt its equipment to future versions of the DICOM Standard. In order to do so, Philips reserves the right to make changes to its products or to discontinue its delivery. The user should ensure that any non-Philips provider linking to Philips equipment also adapts to future versions of the DICOM Standard. If not, the

incorporation of DICOM enhancements into Philips equipment may lead to loss of connectivity (in case of networking) and incompatibility (in case of media).

**3.4. Definitions, Terms and Abbreviations**

**Table 3: Definitions, Terms and Abbreviations**

Abbreviation/Term	Explanation
AE	Application Entity
ANSI	American National Standard Institute
AP	Application Profile
CT	Computed Tomography
DICOM	Digital Imaging and Communications in Medicine
DIMSE	DICOM Message Service Element
EBE	DICOM Explicit VR Big Endian
ELE	DICOM Explicit VR Little Endian
HIS	Hospital Information System
ILE	DICOM Implicit VR Little Endian
IOD	Information Object Definition
MOD	Magneto-Optical Disk
MPPS	Modality Performed Procedure Step
NEMA	National Electrical Manufacturers Association
PDU	Protocol Data Unit
RF	X-Ray Radiofluoroscopic
RT	Radiotherapy
RWA	Real-World Activity
SBL	Stent Boost Live
SC	Secondary Capture
SCP	Service Class Provider
SCU	Service Class User
SOP	Service Object Pair
TCP/IP	Transmission Control Protocol/Internet Protocol
UID	Unique Identifier
XA	X-Ray Angiographic

**3.5. References**

[DICOM] Digital Imaging and Communications in Medicine, Parts 1 - 22 (NEMA PS 3.1- PS 3.22),  
 National Electrical Manufacturers Association  
 1300 North 17th Street  
 Suite 900  
 Arlington, Virginia 22209  
 Internet: <https://www.dicomstandard.org/current>

## 4. Networking

This section contains the networking related services (vs. the media related ones).

### 4.1. Implementation model

The implementation model consists of three sections:

- The application data flow diagram, specifying the relationship between the Application Entities and the "external world" or Real-World Activities,
- A functional description of each Application Entity, and
- The sequencing constraints among them.

#### 4.1.1. Application Data Flow

The StentBoost Live R2.1 implements one network application entity: the StentBoost Live R2.1 Network AE. The following figure shows the networking application data flow as a functional overview of the application entity. On the left, the local Real-World Activities are presented, whereas on the right the remote Real-World Activities are presented.

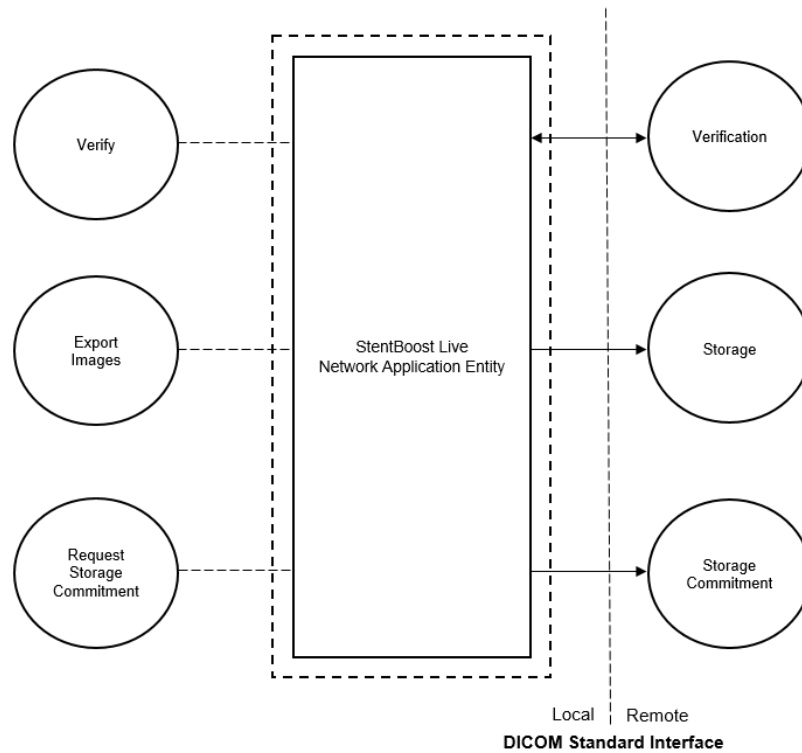


Figure 1: Application Data Flow Diagram

The StentBoost Live R2.1 incorporates the following functionality:

- Export Secondary Capture images (screenshots) and Multiframe Secondary Capture images (movies) to a network DICOM node.
- Request a storage commitment for all exported images.

#### 4.1.2. Functional Definition of AE's

The StentBoost Live R2.1 incorporates the following functionality:

**Export Images**

The StentBoost Live R2.1 Network AE as Storage SCU implements the RWA Export Images to automatically store Secondary Capture images (screenshots) and Multiframe Secondary Capture images (movies) on a remote system.

**Request Storage Commitment**

The StentBoost Live R2.1 Network AE provides the Storage Commitment service as SCU. The StentBoost Live R2.1 requests an association with the selected remote SCP, when the association is accepted the StentBoost Live R2.1 will send the Storage Commitment requests and receives the Storage Commitment responses and releases the association. When the remote commitment actions have been finished, the remote SCP will request an association with the StentBoost Live R2.1. After accepting the association, the StentBoost Live R2.1 receives the Storage Commitment reports, and releases the association when requested.

**4.1.3. Sequencing of Real World Activities**

The StentBoost Live R2.1 is connected to the X-Ray system. The X-Ray system acquires images with a certain procedure and sends to StentBoost Live R2.1.

The StentBoost Live R2.1 (automatically) creates DICOM objects (Secondary Captures/ Multiframe Secondary Captures) at the end of the acquisition run, which are automatically archived to a configured PACS ( i.e. it sends the C-STORE-RQ messages containing the image information).

After sending images to the PACS, if configured, the StentBoost Live R2.1 requests a storage commitment for all exported movies and screenshots (i.e. it sends the request for storage commit N-ACTION-RQ message).

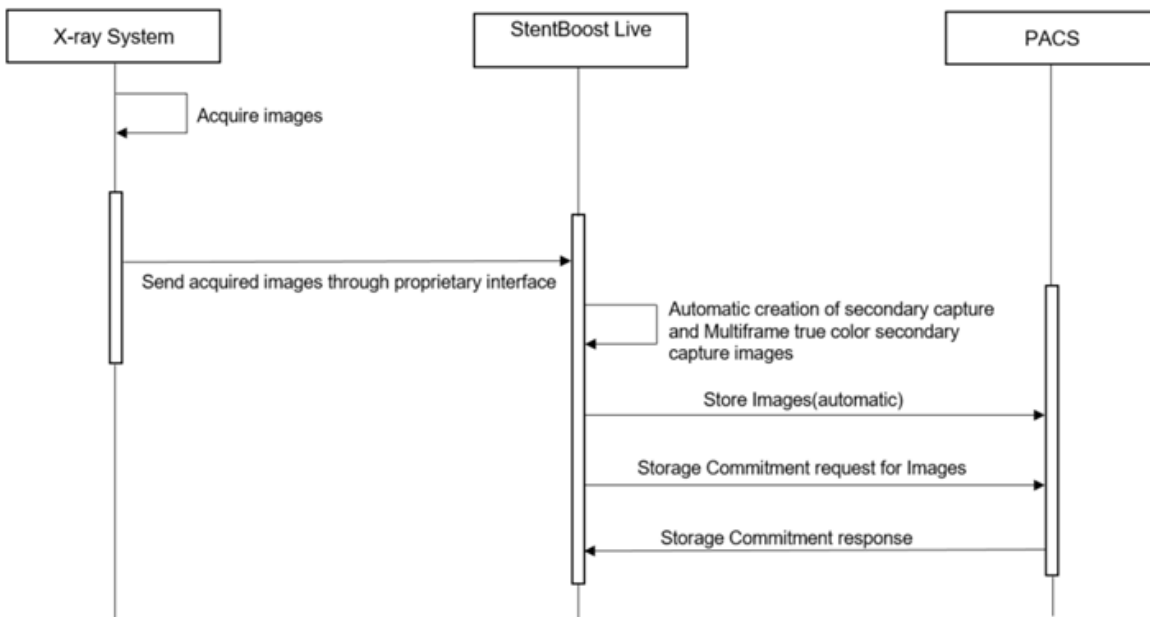


Figure 2: Sequence Diagram

**4.2. AE Specifications**

This section in the DICOM Conformance Statement describes Application Entity specifications.

**4.2.1. StentBoost Live R2.1 Network AE**

Details of this specific Application Entity is specified in this section.



4.2.1.1. SOP Classes

This Application Entity provides Standard Conformance to the following SOP Classes.

Table 4: SOP Classes for the StentBoost Live R2.1 Network AE

SOP Class Name	SOP Class UID	SCU	SCP
Verification SOP Class	1.2.840.10008.1.1	Yes	Yes*
Secondary Capture Image Storage SOP Class	1.2.840.10008.5.1.4.1.1.7	Yes	No
Multi-frame True Color Secondary Capture Image Storage SOP Class	1.2.840.10008.5.1.4.1.1.7.4	Yes	No
Storage Commitment Push Model SOP Class	1.2.840.10008.1.20.1	Yes	No

Note\*: Verification as SCP is supported only as part of asynchronous storage commitment.

4.2.1.2. Association Policies

Each AE specification contains a description of the general association establishment and acceptance policies of the AE.

4.2.1.2.1 General

The DICOM standard application context is specified below.

Table 5: DICOM Application Context

Description	Value
Application Context Name	1.2.840.10008.3.1.1.1

4.2.1.2.2 Number of Associations

The number of simultaneous associations that an Application Entity may support as an Initiator or Acceptor is specified here.

Table 6: Number of associations as an Association Initiator for this AE

Description	Value
Maximum number of simultaneous associations	1

Table 7: Number of associations as an Association Acceptor for this AE

Description	Value
Maximum number of simultaneous associations	1

4.2.1.2.3 Implementation Identifying Information

The value supplied for Implementation Class UID and Implementation Version Name are documented here.

Table 8: DICOM Implementation Class and Version for Stent Boost Live Network AE

Implementation Class UID	1.3.46.670589.7.9.2.1
Implementation Version Name	PMS_CORTLS_2.1

Note :

Following Implementation Class UID and implementation Version Name observed when the association check is done in PSC tool

Implementation Class UID	2.16.840.1
Implementation Version Name	MergeCOM3_5_8_0

**4.2.1.3. Association Initiation Policy**

The Application Entity will respond to a received Association rejection as shown in the table 9.

**Table 9: Association Rejection response**

Result	Source	Reason/Diagnosis	Behavior	
1 – rejected-permanent	1 – DICOM UL service-user	1 – no-reason-given	“Cannot open association” message displayed on the system UI.	
		2 – application-context-name-not-supported	“Cannot open association” message displayed on the system UI.	
		3 – calling-AE-title-not-recognized	“Cannot open association” message displayed on the system UI.	
		7 – called-AE-title-not-recognized	“Cannot open association” message displayed on the system UI.	
	2 – DICOM UL service-provider (ACSE related function)	1 – no-reason-given	“Cannot open association” message displayed on the system UI.	
		2 – protocol-version-not-supported	“Cannot open association” message displayed on the system UI.	
	3 – DICOM UL service-provider (Presentation related function)	1 – temporary-congestion	“Cannot open association” message displayed on the system UI.	
		2 – local-limit-exceeded	“Cannot open association” message displayed on the system UI.	
	2 – rejected-transient	1 – DICOM UL service-user	1 – no-reason-given	“Cannot open association” message displayed on the system UI.
			2 – application-context-name-not-supported	“Cannot open association” message displayed on the system UI.
3 – calling-AE-title-not-recognized			“Cannot open association” message displayed on the system UI.	
7 – called-AE-title-not-recognized			“Cannot open association” message displayed on the system UI.	
2 – DICOM UL service-provider (ACSE related function)		1 – no-reason-given	“Cannot open association” message displayed on the system UI.	
		2 – protocol-version-not-supported	“Cannot open association” message displayed on the system UI.	
3 – DICOM UL service-provider (Presentation related function)		1 – temporary-congestion	“Cannot open association” message displayed on the system UI.	
		2 – local-limit-exceeded	“Cannot open association” message displayed on the system UI.	

The behavior of the AE on receiving an Association abort is summarized in table 10

Table 10: Association Abort Handling

Source	Reason/Diagnosis	Behavior when received	Sent when
0 – DICOM UL service-user (initiated abort)	0- reason-not-specified	“Cannot open association” message displayed on the system UI.	SCU was unable to send the Response to SCP.
2 – DICOM UL service-provider (initiated abort)	0 – reason-not-specified	“Cannot open association” message displayed on the system UI.	SCU was unable to send the Response to SCP.
	1 – unrecognized-PDU	“Cannot open association” message displayed on the system UI.	An unrecognized PDU type is received
	2 – unexpected-PDU	“Cannot open association” message displayed on the system UI.	The received PDU type is not expected
	4 – unrecognized-PDU-parameter	“Cannot open association” message displayed on the system UI.	An unrecognized Associate PDU item is received.
	5 – unexpected-PDU-parameter	“Cannot open association” message displayed on the system UI.	One of the Associate PDU items is received more than once. <ul style="list-style-type: none"> <li>• One of the Associate PDU items is received unexpectedly.</li> </ul>
	6 – invalid-PDU-parameter-value	“Cannot open association” message displayed on the system UI.	One of the Associate PDU items is received more than once. <ul style="list-style-type: none"> <li>• One of the Associate PDU items is not received.</li> <li>• There is mismatch in the application context names between the SCU and the SCP.</li> <li>• Unknown presentation context id is received.</li> <li>• Unknown abstract syntax is received.</li> <li>• The length or the format of a received PDU item is invalid.</li> </ul>

4.2.1.3.1 (Real-World) Activity – Verification as SCU

4.2.1.3.1.1 Description and Sequencing of Activities

The Stent Boost Live Network AE implements the Verification service to verify application level communication.

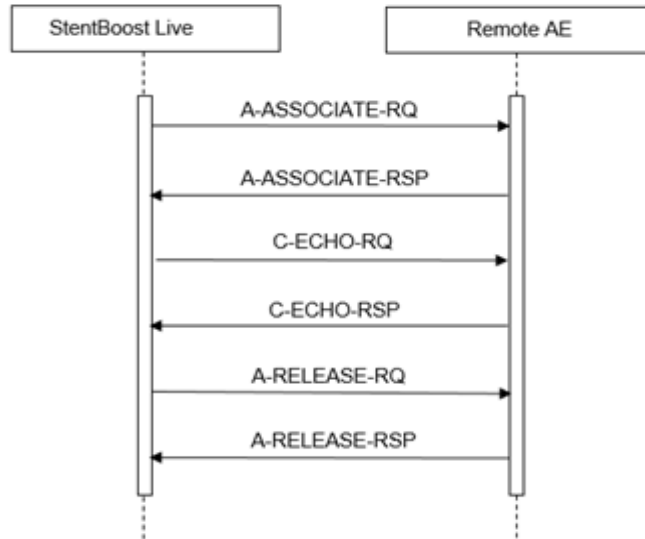


Figure 3: Data Flow Diagram – Verification as SCU

4.2.1.3.1.2 Proposed Presentation Contexts

The presentation contexts are defined in the table 11

Table 11: Proposed Presentation Contexts for (Real-World) Activity – Verification as SCU

Presentation Context Table					
Abstract Syntax		Transfer Syntax		Role	Extended Negotiation
Name	UID	Name List	UID List		
Verification SOP Class	1.2.840.10008.1.1	Explicit VR Big Endian	1.2.840.10008.1.2.2	SCU	None
		Explicit VR Little Endian	1.2.840.10008.1.2.1		
		Implicit VR Little Endian	1.2.840.10008.1.2		

4.2.1.3.1.3 SOP Specific Conformance for Verification SOP Class

The Stent Boost Live Network AE provides standard conformance to the DICOM Verification service class.

4.2.1.3.1.3.1 Dataset Specific Conformance for Verification C-ECHO SCU

C-ECHO-SCU does not have dataset, hence not applicable.

Table 12: Status Response

Service Status	Error Code	Further Meaning	Behavior
Success	0000	Confirmation	The SCP has successfully returned a verification response

4.2.1.3.2 (Real-World) Activity – Image Export

4.2.1.3.2.1 Description and Sequencing of Activities

The Stent Boost Live implements the Storage service class as part of the Stent Boost Live to store selected images at an archive or other storage SCP. All selected images are exported using the same association.

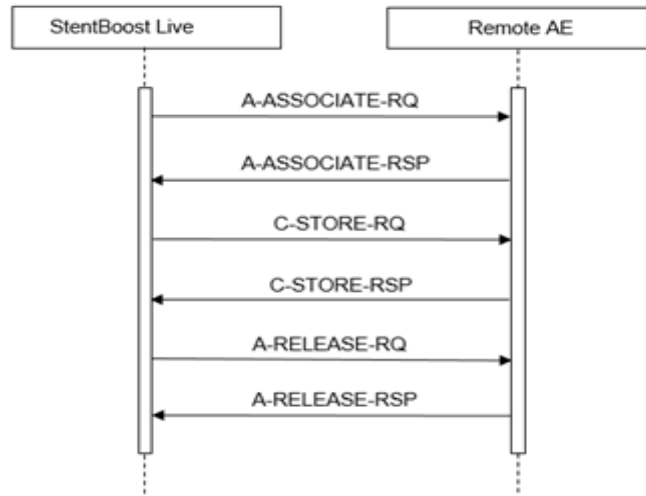


Figure 4: Data Flow Diagram – Store Image – Storage as SCU

4.2.1.3.2.2 Proposed Presentation Contexts

The presentation contexts are defined in the table 13

Table 13: Proposed Presentation Contexts for (Real-World) Activity – Image Export

Presentation Context Table					
Abstract Syntax		Transfer Syntax		Role	Extended Negotiation
Name	UID	Name List	UID List		
Multi-frame True Color Secondary Capture Image Storage	1.2.840.10008.5.1.4.1.1.7.4	JPEG Baseline (Process 1)	1.2.840.10008.1.2.4.50	SCU	None
		JPEG Lossless, Non-Hierarchical, FOP (Process 14)	1.2.840.10008.1.2.4.70		
		Explicit VR Little Endian	1.2.840.10008.1.2.1		
		Implicit VR Little Endian	1.2.840.10008.1.2		
		Explicit VR Big Endian	1.2.840.10008.1.2.2		
Secondary Capture Image Storage SOP Class	1.2.840.10008.5.1.4.1.1.7	Implicit VR Little Endian	1.2.840.10008.1.2	SCU	None
		Explicit VR Big Endian	1.2.840.10008.1.2.2		

Presentation Context Table					
Abstract Syntax		Transfer Syntax		Role	Extended Negotiation
Name	UID	Name List	UID List		
		Explicit VR Little Endian	1.2.840.10008.1.2.1		
		JPEG Lossless, Non-Hierarchical, FOP (Process 14)	1.2.840.10008.1.2.4.70		

4.2.1.3.2.3 SOP Specific Conformance for Storage SOP Classes

4.2.1.3.2.3.1 Dataset Specific Conformance for C-STORE-RQ

Table 14: Status Response

Service Status	Error Code	Further Meaning	Behavior
Success	0000	Successful stored	Export is successful. "Movie\screenshot archived" message displayed on the UI.
Failure	A700	Refused: Out of Resources	Export job failed. "Movie\screenshot archive failed" message is displayed on the UI and "The remote server returned a failure response: 0xA7000" message is displayed in the log viewer of SUT.
	A900	Error: Data Set does not match SOP Class	Export job failed. "Movie\screenshot archive failed" message is displayed on the UI and "The remote server returned a failure response: 0xA9000" message is displayed in the log viewer of SUT.
	C000	Error: cannot understand	Export job failed. "Movie\screenshot archive failed" message is displayed on the UI and "The remote server returned a failure response: 0xC000" message is displayed in the log viewer of SUT.
Warning	B000	Coercion of Data Elements	Export is successful. "Movie\screenshot archived" message displayed on the UI. and "Send message with a warning response 0xB000" message is displayed in the log viewer of SUT.
	B007	Data Set does not match SOP Class	Export is successful. "Movie\screenshot archived" message displayed on the UI. and "Send message with a warning response 0xB007" message is displayed in the log viewer of SUT.

Service Status	Error Code	Further Meaning	Behavior
	B006	Elements Discarded	“Movie\screenshot archived” message displayed on the UI.

**4.2.1.3.3 (Real-World) Activity – Storage Commitment Push Model as SCU**

The Network AE supports asynchronous storage commitment. The Figure below shows the sequence diagram for the asynchronous storage commitment.

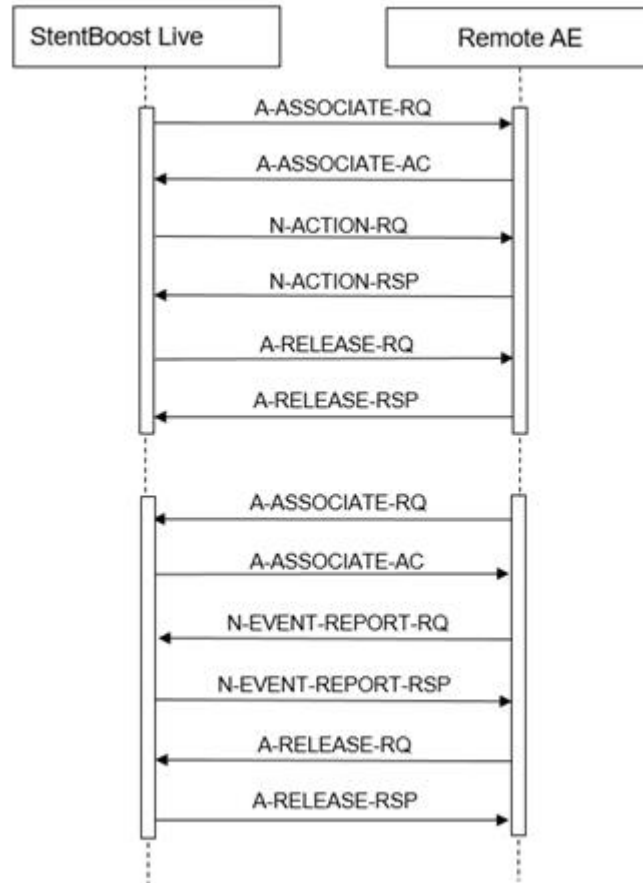


Figure 5: Data Flow Diagram -Storage Commitment as SCU

**4.2.1.3.3.1 Proposed Presentation Contexts**

The proposed presentation contexts for Storage Commitment Push Model as SCU are defined in Table 15.

Table 15: Proposed Presentation Contexts for (Real-World) Activity – Storage Commitment Push Model as SCU

Presentation Context Table					
Abstract Syntax		Transfer Syntax		Role	Extended Negotiation
Name	UID	Name List	UID List		
Storage Commitment Push Model SOP Class	1.2.840.10008.1.20.1	Explicit VR Big Endian	1.2.840.10008.1.2.2	SCU	None

Presentation Context Table					
Abstract Syntax		Transfer Syntax		Role	Extended Negotiation
Name	UID	Name List	UID List		
		Explicit VR Little Endian	1.2.840.10008.1.2.1		
		Implicit VR Little Endian	1.2.840.10008.1.2		

**4.2.1.3.3.2 SOP Specific Conformance for Storage Commitment Push Model SOP Class**

The StentBoost Live R2.1 conforms to the standard Storage Commitment model

**4.2.1.3.3.2.1 Dataset Specific Conformance for Storage Commitment Push Model SOP Class N-EVENT-REPORT-SCP**

**Table 16: Status Response for N-EVENT-REPORT.**

Service Status	Error Code	Further Meaning	Behavior
Success	0000	Operation complete	Storage commitment is successful.
Failure	xxxx	(any failure)	Error message is logged and can be reviewed by a Field Service Engineer. DICOM Study will be deleted even when Storage Commitment is failed

The communication status behavior of the N-EVENT-REPORT is listed in Table 17.

**Table 17: DICOM Command Communication Failure Behavior for N-EVENT-REPORT.**

Exception	Behavior
Network Reply Time-out	The association is released. Continues with waiting for storage commitment.
Association Time-out SCU	The association is released. Continues with waiting for storage commitment.
Association aborted	Continues with waiting for storage commitment.

**4.2.1.3.3.2.2 Dataset Specific Conformance for Storage Commitment Push Model SOP Class N-ACTION-SCU**

This chapter describes the Dataset Specific response behavior for Storage Commitment Attribute N-ACTION-RQ.

**Table 18: Storage Commitment Attribute for N-ACTION-RQ**

Attribute Name	Tag	Comment
<b>Storage Commitment Module</b>		
Transaction UID	0008,1195	
Referenced SOP Sequence	0008,1199	
>Referenced SOP Class UID	0008,1150	
>Referenced SOP Instance UID	0008,1155	



The possible status responses for N-ACTION-RQ are shown in the Table 19.

**Table 19: Status Response for N-ACTION-RQ**

Service Status	Error Code	Further Meaning	Behavior
Success	0000	Conformation. Operation complete	
Failure	xxxx	(any failure)	

The possible communication failures are shown below in table 20.

**Table 20: DICOM Command Communication Failure Behavior N-ACTION.**

Exception	Behavior
Reply Time-out	The association is released. The Archive Images job expects storage commitment report.
Association Time-out SCU	The association is released. The Archive Images job expects storage commitment report.
Association Aborted	The Archive Images job expects storage commitment report.

**4.2.1.4. Association Acceptance Policy**

The Application Entity will respond to a received Association rejection as shown in the table 21

**Table 21: Association Rejection response**

Result	Source	Reason/Diagnosis	Behavior
1 – rejected-permanent	1 – DICOM UL service-user	1 – no-reason-given	“Cannot open association” message displayed on the system UI.
		2 – application-context-name-not-supported	“Cannot open association” message displayed on the system UI.
		3 – calling-AE-title-not-recognized	“Cannot open association” message displayed on the system UI.
		7 – called-AE-title-not-recognized	“Cannot open association” message displayed on the system UI.
	2 – DICOM UL service-provider (ACSE related function)	1 – no-reason-given	“Cannot open association” message displayed on the system UI.
		2 – protocol-version-not-supported	“Cannot open association” message displayed on the system UI.
3 – DICOM UL service-provider(Presentation related function)	1 – temporary-congestion	“Cannot open association” message displayed on the system UI.	
	2 – local-limit-exceeded	“Cannot open association” message displayed on the system UI.	
2 – rejected-transient	1 – DICOM UL service-user	1 – no-reason-given	“Cannot open association” message displayed on the system UI.
		2 – application-context-name-not-supported	“Cannot open association” message displayed on the system UI.

Result	Source	Reason/Diagnosis	Behavior
		3 – calling-AE-title-not-recognized	“Cannot open association” message displayed on the system UI.
		7 – called-AE-title-not-recognized	“Cannot open association” message displayed on the system UI.
	2 – DICOM UL service-provider (ACSE related function)	1 – no-reason-given	“Cannot open association” message displayed on the system UI.
		2 – protocol-version-not-supported	“Cannot open association” message displayed on the system UI.
	3 – DICOM UL service-provider (Presentation related function)	1 – temporary-congestion	“Cannot open association” message displayed on the system UI.
		2 – local-limit-exceeded	“Cannot open association” message displayed on the system UI.

The Application Entity will respond to a received Association Abort as shown in the table 22

**Table 22: Association Abort Handling**

Source	Reason/Diagnosis	Behavior when received	Sent when
0 – DICOM UL service-user (initiated abort)	0- reason-not-specified	“Cannot open association” message displayed on the system UI.	SCU was unable to send the Response to SCP.
2 – DICOM UL service-provider (initiated abort)	0 – reason-not-specified	“Cannot open association” message displayed on the system UI.	SCU was unable to send the Response to SCP.
	1 – unrecognized-PDU	“Cannot open association” message displayed on the system UI.	An unrecognized PDU type is received
	2 – unexpected-PDU	“Cannot open association” message displayed on the system UI.	The received PDU type is not expected
	4 – unrecognized-PDU-parameter	“Cannot open association” message displayed on the system UI.	An unrecognized Associate PDU item is received.
	5 – unexpected-PDU-parameter	“Cannot open association” message displayed on the system UI.	One of the Associate PDU items is received more than once. <ul style="list-style-type: none"> <li>• One of the Associate PDU items is received unexpectedly.</li> </ul>

Source	Reason/Diagnosis	Behavior when received	Sent when
	6 – invalid-PDU-parameter-value	“Cannot open association” message displayed on the system UI.	One of the Associate PDU items is received more than once. <ul style="list-style-type: none"> <li>• One of the Associate PDU items is not received.</li> <li>• There is mismatch in the application context names between the SCU and the SCP.</li> <li>• Unknown presentation context id is received.</li> <li>• Unknown abstract syntax is received.</li> <li>• The length or the format of a received PDU item is invalid.</li> </ul>

4.2.1.4.1 (Real-World) Activity – Verification as SCP

4.2.1.4.1.1 Description and Sequencing of Activities

Note\*: Verification as SCP is supported only as part of asynchronous storage commitment.

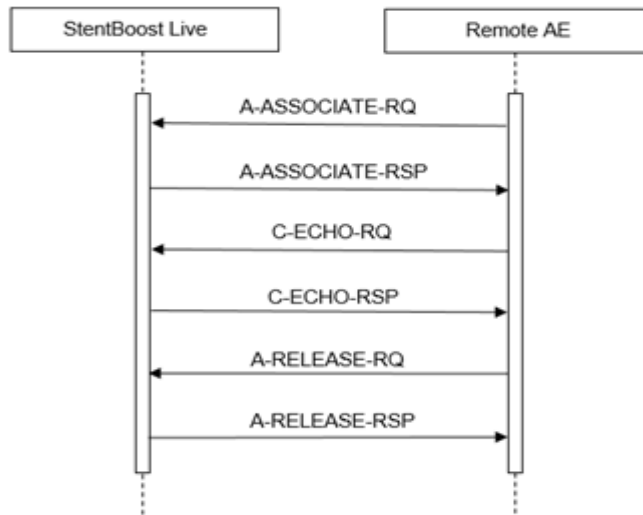


Figure 6: Data Flow Diagram – Verification as SCP

4.3. Network Interfaces

4.3.1. Physical Network Interfaces

The System provides only DICOM V3.0 TCP/IP Network Communication Support as defined in PS 3.8 of the standard.

TCP/IP is the only protocol stack supported.

Supported physical medium include:

- IEEE 802.3-1995, 10BASE-T
- IEEE 802.3-1995, 100BASE-TX (Fast Ethernet)
- IEEE 802.3, 1000BASE-X (Fiber Optic Gigabit Ethernet).

The TCP/IP Stack as supported by the underlying Operating System.  
 The API is the WinSock 2 interface as supported by the underlying Operating System.

**4.3.2. Additional Protocols**

No additional protocols are used.

**4.4. Configuration**

Any implementation’s DICOM conformance may be dependent upon configuration, which takes place at the time of installation. Issues concerning configuration are addressed in this section.

**4.4.1. AE Title/Presentation Address Mapping**

An important installation issue is the translation from AE title to presentation address. How this is to be performed is described here.

**4.4.1.1. Local AE Titles**

The Field Service User Interface only allows one AE to be configured.

The following AE specific information must be available to configure a local AE:

- AE title
- port number (note that normally all local Stent Boost Live AE’s will have a different port number)

**4.4.1.2. Remote AE Title/Presentation Address Mapping**

One or more remote AE’s may be configured.

The following AE specific information must be available to configure a remote AE:

- AE title
- hostname or IP address
- port number

**4.4.2. Parameters**

The specification of important operational parameters, their default value and range (if configurable) are specified here.

**Table 23: Configuration Parameters Table**

Parameter	Configurable	Default Value
General Parameter		
Time-out waiting for acceptance or rejection Response to an Association Open Request (Application Level timeout)	Yes	15 seconds
General Dimse level time-out values (Verification, Storage)	No	-
Time-out for response to TCP/IP connect request. (Low-level timeout)	OS	-
Time-out waiting for acceptance of a TCP/IP message over the network (Low-level timeout)	OS	-
Time-out for waiting for data between TCP/IP packets. (Low-level timeout)	OS	-
Any changes to default TCP/IP settings, such as configurable stack parameters.	OS	-
AE Specific Parameters		

Parameter	Configurable	Default Value
Size constraint in maximum object size	No	-
Maximum PDU size the AE can send and receive	Yes	64234
Association time-out SCP	Yes	30 seconds
Association time-out SCU	Yes	30 seconds
AE specific DIMSE level time-out values	Yes	30 seconds
Number of simultaneous associations by service and/or SOP class	No	-
SOP Class support	No	-
Transfer Syntax support	No	-
Port Number	Yes	241

## **5. Media Interchange**

Not Applicable.

## 6. Support of Character Sets

Any support for character sets in Network and Media services is described here.

**Table 24: Supported DICOM Character Sets**

Character Set Description	Defined Term	ESC Sequence	ISO Registration Number	Code Element	Character Set
Default repertoire	ISO 2022 IR 6	-	ISO-IR 6	G0	ISO 646
Latin alphabet No. 1	ISO_IR 100	-	ISO-IR 6	G0	ISO 646
		-	ISO-IR 100	G1	Supplementary set of ISO 8859
Japanese	ISO 2022 IR 13	ESC 02/09 04/09	ISO-IR 13	G1	JIS X 0201: Katakana
Japanese	ISO 2022 IR 87	ESC 02/04 04/02	ISO-IR 87	G0	JIS X 0208: Kanji and Hiragana
Japanese	ISO 2022 IR 159	ESC 02/04 02/08 04/04	ISO-IR 159	G0	JIS X 0212: Supplementary Kanji set
Chinese	GB18030	-	-	-	Chinese
Unicode in UTF-8	ISO_IR 192	-	ISO-IR 192	-	Unicode in UTF-8

Note: With respect to Chinese and Japanese character set support, in some cases, patient name and referring physician’s name can be incomplete/wrong because input comes in wrong format from X-ray system.

## 7. Security

### 7.1. Security Profiles

Not applicable

#### 7.1.1. Security use Profiles

Secure communication is a "mode of operation" supported by the implementation of the DICOM Basic TLS Secure Transport Connection Profile [DICOM]. This functionality will be used by the nodes, which can authenticate each other before they exchange DICOM information. For secure communication, the StentBoost Live R2.1 uses the protocols TLS 1.0, TLS 1.1, TLS 1.2 and SSL 3.0 which provide message authentication, integrity, confidentiality, and replay protection. Confidentiality is optional and can be controlled by the encryption settings. Within these protocols, the StentBoost Live R2.1 supports the following Cipher Suites\*:

#### 7.1.2. Security Transport Connection Profiles

- TLS\_ECDHE\_RSA\_WITH\_AES\_256\_CBC\_SHA384\_P256
- TLS\_ECDHE\_RSA\_WITH\_AES\_256\_CBC\_SHA384\_P384
- TLS\_ECDHE\_RSA\_WITH\_AES\_128\_CBC\_SHA256\_P256
- TLS\_ECDHE\_RSA\_WITH\_AES\_128\_CBC\_SHA256\_P384
- TLS\_ECDHE\_RSA\_WITH\_AES\_256\_CBC\_SHA\_P256
- TLS\_ECDHE\_RSA\_WITH\_AES\_256\_CBC\_SHA\_P384
- TLS\_ECDHE\_RSA\_WITH\_AES\_128\_CBC\_SHA\_P256
- TLS\_ECDHE\_RSA\_WITH\_AES\_128\_CBC\_SHA\_P384
- TLS\_DHE\_RSA\_WITH\_AES\_256\_GCM\_SHA384
- TLS\_DHE\_RSA\_WITH\_AES\_128\_GCM\_SHA256
- TLS\_DHE\_RSA\_WITH\_AES\_256\_CBC\_SHA
- TLS\_DHE\_RSA\_WITH\_AES\_128\_CBC\_SHA
- TLS\_RSA\_WITH\_AES\_256\_GCM\_SHA384
- TLS\_RSA\_WITH\_AES\_128\_GCM\_SHA256
- TLS\_RSA\_WITH\_AES\_256\_CBC\_SHA256
- TLS\_RSA\_WITH\_AES\_128\_CBC\_SHA256
- TLS\_RSA\_WITH\_AES\_256\_CBC\_SHA
- TLS\_RSA\_WITH\_AES\_128\_CBC\_SHA
- TLS\_ECDHE\_ECDSA\_WITH\_AES\_256\_GCM\_SHA384\_P384
- TLS\_ECDHE\_ECDSA\_WITH\_AES\_128\_GCM\_SHA256\_P256
- TLS\_ECDHE\_ECDSA\_WITH\_AES\_128\_GCM\_SHA256\_P384
- TLS\_ECDHE\_ECDSA\_WITH\_AES\_256\_CBC\_SHA384\_P384
- TLS\_ECDHE\_ECDSA\_WITH\_AES\_128\_CBC\_SHA256\_P256
- TLS\_ECDHE\_ECDSA\_WITH\_AES\_128\_CBC\_SHA256\_P384
- TLS\_ECDHE\_ECDSA\_WITH\_AES\_256\_CBC\_SHA\_P256
- TLS\_ECDHE\_ECDSA\_WITH\_AES\_256\_CBC\_SHA\_P384
- TLS\_ECDHE\_ECDSA\_WITH\_AES\_128\_CBC\_SHA\_P256
- TLS\_ECDHE\_ECDSA\_WITH\_AES\_128\_CBC\_SHA\_P384
- TLS\_DHE\_DSS\_WITH\_AES\_256\_CBC\_SHA256



- TLS\_DHE\_DSS\_WITH\_AES\_128\_CBC\_SHA256
- TLS\_DHE\_DSS\_WITH\_AES\_256\_CBC\_SHA
- TLS\_DHE\_DSS\_WITH\_AES\_128\_CBC\_SHA
- TLS\_RSA\_WITH\_3DES\_EDE\_CBC\_SHA
- TLS\_DHE\_DSS\_WITH\_3DES\_EDE\_CBC\_SHA
- TLS\_RSA\_WITH\_NULL\_SHA256\*\*
- TLS\_RSA\_WITH\_NULL\_SHA\*\*

\*not every cipher suite is supported by every protocol

\*\*NULL cipher, does not provide encryption. For authentication only

The StentBoost Live R2.1 supports X.509 certificates. The following TLS Certification checks will be done (TLS Handshake). The machine (either server or client) that will send its certificate will:

- Choose the certificate according to Common Name (CN) value in the Subject-field.
- This name is case-sensitive. All present certificates should have unique CN names.

The server verifies:

That the client certificate is a X.509 certificate which is not tampered with

- That the client certificate is in the list of trusted certificates
- That the client certificate is not expired (present time is between "Valid From" and "Valid To" fields of the X.509 certificate)
- That the client certificate has the correct purpose (at least the Client Authentication purpose)

The client verifies:

- That the server certificate is a X.509 certificate which is not tampered with
- That the server certificate is in the list of trusted certificates
- That the server certificate is not expired (present time is between "Valid From" and "Valid To" fields of the X.509 certificate)
- That the server certificate has the correct purpose (at least Server Authentication purpose)

No verification is done on:

- Revocation of certificates
- Limiting the connection to a limited set of IP-addresses

Node authentication with or without encryption is only possible when both nodes have:

- An access to their own private keys
- An access to a copy of the certificate of the other node containing its public key

The StentBoost Live R2.1 reads certificates from the OS provided certificate stores. The client certificates are read from the currently logged in user store. The server certificates are read from the machine store. It is the responsibility of the Hospital to setup and maintain the certificate stores. This includes the removal of revoked certificates and certificate updates prior to their expiration. Since neither X.500 directories, neither Lightweight Directory Access Protocol (LDAP) nor Certificate Revocation Lists (CRLs) are supported, the whole certificate chain needs to be replaced after a security breach.

The following figure presents the message flow of TLS handshake supported.

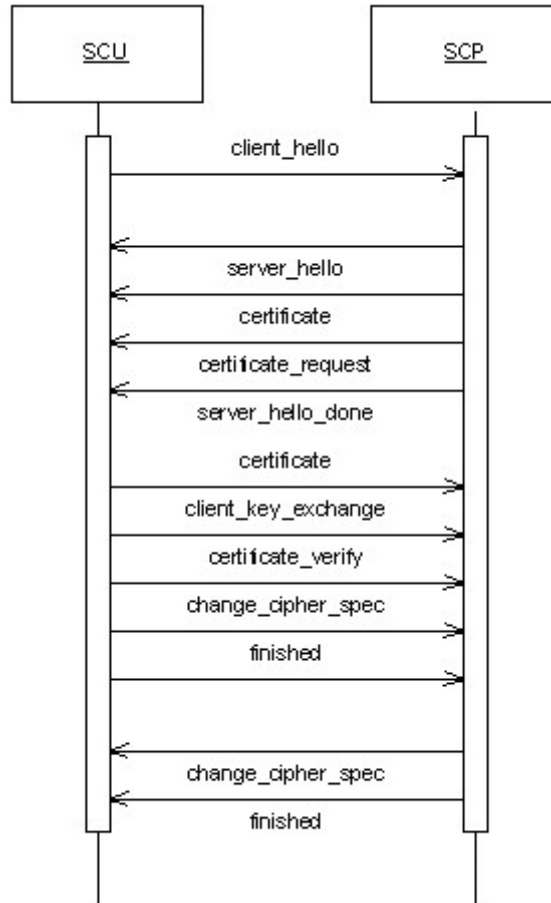


Figure 7: Message flow of TLS handshake

**7.1.3. Digital Signature Profiles**

Not applicable

**7.1.4. Media Storage Security Profiles**

Not applicable

**7.1.5. Attribute Confidentiality Profiles**

Not applicable

**7.1.6. Network Address Management Profiles**

Not applicable

**7.1.7. Time Synchronization Profiles**

The StentBoost Live R2.1 conforms to the IHE Consistent Time Profile. It is possible to synchronize time with the NTP Timeserver .The NTP Timeserver is an element of Hospital Infrastructure.

**7.1.8. Application Configuration Management Profiles**

Not applicable

**7.1.9. Audit Trail Profiles**

The Audit Trail Component is a component of the StentBoost Live R2.1 and can create messages according to the Audit Trail and Note Authentication, IHE defined standard. Actors are information systems or

components of information systems that produce, manage, or act on categories of information required by operational activities in the enterprise. The Audit Trail Component allows security officers in an institution to audit activities, to detect non-compliant behavior in the enterprise, and to facilitate detection of improper creation, access, modification and deletion of Protected Health Information (PHI), where PHI data is considered as information records (Registration, Order, Study/Procedure, Reports and to a lesser degree Images/Presentation States), and not the flow of information between the systems. This includes information exported to and imported from every secured node in the “secured domain”.

The messages will be created and sent to a syslog server according to the syslog protocol. The time that is used will be the local time of the system which is synchronized with the NTP Time Server. The timeserver and syslog server are elements of the Hospital infrastructure. The following messages will be created and sent to a central Audit Record Repository

- Application Activity
- Begin Transferring DICOM Instances
- DICOM Instances Transferred
- Security Alert
- User Authentication
- DICOM Instances Accessed

### 7.2. Association Level Security

The StentBoost Live R2.1 accepts associations from unknown AEs but only for Storage commit N-Event-Report. If the StentBoost Live R2.1 is configured to use secure mode, then the incoming associations (for the StentBoost Live R2.1 as SCP) should follow secure mode.

### 7.3. Application Level Security

The StentBoost Live R2.1 allows the use of either a conventional (non-secure) DICOM communication or a secure DICOM communication based on the Transport Layer Security (TLS) protocol and Security Sockets Layer (SSL) if configured, the StentBoost Live R2.1 supports security.

Measures for:

- Secure authentication of a node
- Integrity and confidentiality of transmitted data
- Replay protection
- Generation of audit trail records
- Access control and user authentication.

## 8. Annexes of application "StentBoost Live"

### 8.1. IOD Contents

#### 8.1.1. Created SOP Instance

This section specifies each IOD created by this application.

This section specifies each IOD created (including private IOD's). It should specify the attribute name, tag, VR, and value. The value should specify the range and source (e.g. user input, Modality Worklist, automatically generated, etc.). For content items in templates, the range and source of the concept name and concept values should be specified. Whether the value is always present or not shall be specified.

Abbreviations used in the IOD tables for the column "Presence of Module" are:

ALWAYS           The module is always present  
 CONDITIONAL    The module is used under specified condition

Abbreviations used in the Module table for the column "Presence of Value" are:

ALWAYS           The attribute is always present with a value  
 EMPTY           The attribute is always present without any value (attribute sent zero length)  
 VNAP            The attribute is always present and its Value is Not Always Present (attribute sent zero length if no value is present)  
 ANAP            The attribute is present under specified condition – if present then it will always have a value

The abbreviations used in the Module table for the column "Source" are:

AUTO             The attribute value is generated automatically  
 CONFIG          The attribute value source is a configurable parameter  
 COPY            The attribute value source is another SOP instance  
 FIXED           The attribute value is hard-coded in the application  
 IMPLICIT        The attribute value source is a user-implicit setting  
 MPPS            The attribute value is the same as that use for Modality Performed Procedure Step  
 MWL             The attribute value source is a Modality Worklist  
 USER            The attribute value source is explicit user input

#### 8.1.1.1. List of created SOP Classes

**Table 25 : List of created SOP Classes**

SOP Class Name	SOP Class UID
Secondary Capture Image Storage SOP Class	1.2.840.10008.5.1.4.1.1.7
Multiframe True Color Secondary Capture Image Storage SOP Class	1.2.840.10008.5.1.4.1.1.7.4

#### 8.1.1.1.1 Secondary Capture Image Storage SOP Class

**Table 26 : IOD of Created Secondary Capture Image Storage SOP Class Instances**

Information Entity	Module	Presence Of Module
Patient	Patient Module	ALWAYS
Study	General Study Module	ALWAYS
Series	General Series Module	ALWAYS
Equipment	General Equipment Module	ALWAYS

Information Entity	Module	Presence Of Module
Image	SC Equipment Module	ALWAYS
	General Image Module	ALWAYS
	Image Pixel Module	ALWAYS
	SOP Common Module	ALWAYS

Table 27: Patient Module

Attribute Name	Tag	VR	Value	Presence of Value	Source	Comment
Patient's Name	0010,0010	PN		ALWAYS	COPY	Obtained from X-Ray System
Patient ID	0010,0020	LO		ALWAYS	COPY	Obtained from X-Ray System
Patient's Birth Date	0010,0030	DA		ALWAYS	COPY	Obtained from X-Ray System
Patient's Sex	0010,0040	CS		ALWAYS	COPY	Obtained from X-Ray System

Table 28: General Study Module

Attribute Name	Tag	VR	Value	Presence of Value	Source	Comment
Study Date	0008,0020	DA		ALWAYS	COPY	Obtained from X-Ray System
Study Time	0008,0030	TM		ALWAYS	COPY	Obtained from X-Ray System
Accession Number	0008,0050	SH		ALWAYS	COPY	Obtained from X-Ray System
Referring Physician's Name	0008,0090	PN		ALWAYS	COPY	Obtained from X-Ray System
Study Instance UID	0020,000D	UI		ALWAYS	COPY	Obtained from X-Ray System
Study ID	0020,0010	SH		ALWAYS	COPY	Obtained from X-Ray System

Table 29: General Series Module

Attribute Name	Tag	VR	Value	Presence of Value	Source	Comment
Modality	0008,0060	CS	XA	ALWAYS	FIXED	
Series Instance UID	0020,000E	UI		ALWAYS	AUTO	
Series Number	0020,0011	IS		ALWAYS	COPY	Obtained from X-Ray System

Table 30 : General Equipment Module

Attribute Name	Tag	VR	Value	Presence of Value	Source	Comment
Manufacturer	0008,0070	LO	Philips	ALWAYS	FIXED	

Table 31 : SC Equipment Module

Attribute Name	Tag	VR	Value	Presence of Value	Source	Comment
Modality	0008,0060	CS	XA	ALWAYS	FIXED	
Conversion Type	0008,0064	CS	WSD	ALWAYS	FIXED	

Table 32: General Image Module

Attribute Name	Tag	VR	Value	Presence of Value	Source	Comment
Image Type	0008,0008	CS	DERIVED\SECONDARY	ALWAYS	FIXED	
Instance Number	0020,0013	IS		ALWAYS	AUTO	
Patient Orientation	0020,0020	CS		EMPTY	FIXED	

Burned in Annotation	0028,0301	CS	NO	ALWAYS	FIXED	
----------------------	-----------	----	----	--------	-------	--

Table 33: Image Pixel Module

Attribute Name	Tag	VR	Value	Presence of Value	Source	Comment
Samples per Pixel	0028,0002	US	3	ALWAYS	FIXED	
Photometric Interpretation	0028,0004	CS	RGB	ALWAYS	FIXED	
Planar Configuration	0028,0006	US	0	ALWAYS	FIXED	
Rows	0028,0010	US		ALWAYS	AUTO	Allura: rows 1000 Azurion FlexVision: rows 956 Azurion HD monitor: rows 960 Azurion 19" monitor: rows 992
Columns	0028,0011	US		ALWAYS	AUTO	Allura : columns 1000 Azurion FlexVision: columns 956 Azurion HD monitor: columns 960 Azurion 19" monitor: columns 982
Bits Allocated	0028,0100	US	8	ALWAYS	FIXED	
Bits Stored	0028,0101	US	8	ALWAYS	FIXED	
High Bit	0028,0102	US	7	ALWAYS	FIXED	
Pixel Representation	0028,0103	US	0	ALWAYS	FIXED	
Pixel Data	7FE0,0010	OW/OB		ALWAYS	AUTO	

Table 34: SOP Common Module

Attribute Name	Tag	VR	Value	Presence of Value	Source	Comment
Specific Character Set	0008,0005	CS		ANAP	AUTO	
Instance Creation Date	0008,0012	DA		ALWAYS	AUTO	
Instance Creation Time	0008,0013	TM		ALWAYS	AUTO	
SOP Class UID	0008,0016	UI	1.2.840.10008.5.1.4.1.1.7	ALWAYS	FIXED	
SOP Instance UID	0008,0018	UI		ALWAYS	AUTO	
Timezone Offset From UTC	0008,0201	SH		ALWAYS	AUTO	
Instance Number	0020,0013	IS		ALWAYS	AUTO	

8.1.1.1.2 Multiframe True Color Secondary Capture Image Storage SOP Class

Table 35: IOD of Created Multiframe True Color Secondary Capture Image Storage SOP Class Instances

Information Entity	Module	Presence Of Module
Patient	Patient Module	ALWAYS
Study	General Study Module	ALWAYS
Series	General Series Module	ALWAYS

Information Entity	Module	Presence Of Module
Equipment	General Equipment Module	ALWAYS
	SC Equipment Module	ALWAYS
Image	General Image Module	ALWAYS
	Image Pixel Module	ALWAYS
	Cine Module	ALWAYS
	Multi-Frame Module	ALWAYS
	Multi-Frame Functional Groups Module	USER OPTION
	SC Multi-frame Image Module	ALWAYS
	SOP Common Module	ALWAYS

Table 36: Patient Module

Attribute Name	Tag	VR	Value	Presence of Value	Source	Comment
Patient's Name	0010,0010	PN		ALWAYS	COPY	Obtained from X-Ray system
Patient ID	0010,0020	LO		ALWAYS	COPY	Obtained from X-Ray system
Patient's Birth Date	0010,0030	DA		ALWAYS	COPY	Obtained from X-Ray system
Patient's Sex	0010,0040	CS	F,M,O	ALWAYS	COPY	Obtained from X-Ray system

Table 37: General Study Module

Attribute Name	Tag	VR	Value	Presence of Value	Source	Comment
Study Date	0008,0020	DA		ALWAYS	COPY	Obtained from X-Ray system
Study Time	0008,0030	TM		ALWAYS	COPY	Obtained from X-Ray system
Accession Number	0008,0050	SH		ALWAYS	COPY	Obtained from X-Ray system
Referring Physician's Name	0008,0090	PN		ALWAYS	COPY	Obtained from X-Ray system
Study Instance UID	0020,000D	UI		ALWAYS	COPY	Obtained from X-Ray system
Study ID	0020,0010	SH		ALWAYS	COPY	Obtained from X-Ray system

Table 38: General Series Module

Attribute Name	Tag	VR	Value	Presence of Value	Source	Comment
Modality	0008,0060	CS	XA	ALWAYS	FIXED	
Series Instance UID	0020,000E	UI		ALWAYS	AUTO	
Series Number	0020,0011	IS		ALWAYS	COPY	Obtained from X-Ray system

Table 39 : SC Equipment Module

Attribute Name	Tag	VR	Value	Presence of Value	Source	Comment
Modality	0008,0060	CS	XA	ALWAYS	FIXED	
Conversion Type	0008,0064	CS	WSD	ALWAYS	FIXED	

Table 40 : General Equipment Module

Attribute Name	Tag	VR	Value	Presence of Value	Source	Comment
----------------	-----	----	-------	-------------------	--------	---------

Manufacturer	0008,0070	LO	Philips	ALWAYS	FIXED	
--------------	-----------	----	---------	--------	-------	--

Table 41: General Image Module

Attribute Name	Tag	VR	Value	Presence of Value	Source	Comment
Image Type	0008,0008	CS	DERIVED\ SECONDARY	ALWAYS	FIXED	
Content Date	0008,0023	DA		ALWAYS	AUTO	
Content Time	0008,0033	TM		ALWAYS	AUTO	
Instance Number	0020,0013	IS		ALWAYS	AUTO	
Patient Orientation	0020,0020	CS		EMPTY	FIXED	
Burned in Annotation	0028,0301	CS	NO	ALWAYS	FIXED	

Table 42: Image Pixel Module

Attribute Name	Tag	VR	Value	Presence of Value	Source	Comment
Samples per Pixel	0028,0002	US	3	ALWAYS	FIXED	
Photometric Interpretation	0028,0004	CS		ALWAYS	AUTO	YBR_FULL_422 or RGB
Planar Configuration	0028,0006	US	0	ALWAYS	FIXED	
Rows	0028,0010	US		ALWAYS	AUTO	Allura: rows 1000 Azurion FlexVision: rows 956 Azurion HD monitor: rows 960 Azurion 19" monitor: rows 992
Columns	0028,0011	US		ALWAYS	AUTO	Allura : columns 1000 Azurion FlexVision: columns 956 Azurion HD monitor: columns 960 Azurion 19" monitor: columns 982
Bits Allocated	0028,0100	US	8	ALWAYS	FIXED	
Bits Stored	0028,0101	US	8	ALWAYS	FIXED	
High Bit	0028,0102	US	7	ALWAYS	FIXED	
Pixel Representation	0028,0103	US	0	ALWAYS	FIXED	
Pixel Data	7FE0,0010	OW/OB		ALWAYS	AUTO	

Table 43: Cine Module

Attribute Name	Tag	VR	Value	Presence of Value	Source	Comment
Frame Time	0018,1063	DS		ALWAYS	AUTO	

Table 44: Multi-Frame Module

Attribute Name	Tag	VR	Value	Presence of Value	Source	Comment
Number of Frames	0028,0008	DS		ALWAYS	AUTO	



Frame Increment Pointer	0028,0009	AT	00181063	ALWAYS	FIXED	
-------------------------	-----------	----	----------	--------	-------	--

**Table 45: Multi-Frame Functional Groups Module**

Attribute Name	Tag	VR	Value	Presence of Value	Source	Comment
Content Date	0008,0023	DA		ALWAYS	AUTO	
Content Time	0008,0033	TM		ALWAYS	AUTO	
Instance Number	0020,0013	IS		ALWAYS	AUTO	
Number of Frames	0028,0008	IS		ALWAYS	AUTO	

**Table 46: SC Multi-Frame Image Module**

Attribute Name	Tag	VR	Value	Presence of Value	Source	Comment
Frame Increment Pointer	0028,0009	AT	00181063	ALWAYS	FIXED	
Burned In Annotation	0028,0301	CS	NO	ALWAYS	FIXED	

**Table 47: SOP Common Module**

Attribute Name	Tag	VR	Value	Presence of Value	Source	Comment
Specific Character Set	0008,0005	CS		ANAP	AUTO	
Instance Creation Date	0008,0012	DA		ALWAYS	AUTO	
Instance Creation Time	0008,0013	TM		ALWAYS	AUTO	
SOP Class UID	0008,0016	UI	1.2.840.10008.5.1.4.1.1.7.4	ALWAYS	FIXED	
SOP Instance UID	0008,0018	UI		ALWAYS	AUTO	
Timezone Offset From UTC	0008,0201	SH		ALWAYS	AUTO	
Instance Number	0020,0013	IS		ALWAYS	AUTO	

*- This part of the page is left intentionally empty -*

**Issued by:**

Philips Medical Systems Nederland B.V.

Veenpluis 6

5684 PC Best

The Netherlands

Note that the address is also known as “Veenpluis 4-6”, which refers to the same physical location

Internet: <https://www.philips.com/healthcare/about/customer-support>

Doc Id: HSDP-1222761

Date: 29-Mar-2023

