

# PHILIPS

## Headphones TAE2100



## User manual

Register your product and get support at  
[www.philips.com/support](http://www.philips.com/support)

# 1 Important safety instructions

## Hearing safety



### Danger

- To avoid hearing damage, limit the time you use headphones at high volume and set the volume to a safe level. The louder the volume, the shorter the safe listening time is.

Be sure to observe the following guidelines when using your headphones.

- Listen at reasonable volumes for reasonable periods of time.
- Be careful not to adjust the volume continuously upwards as your hearing adapts.
- Do not turn up the volume so high that you can't hear what's around you.
- You should use caution or temporarily discontinue use in potentially hazardous situations.
- Excessive sound pressure from headphones and headphones can cause hearing loss.
- Using headphones with both ears covered while driving is not recommended and may be illegal in some areas.
- For your safety, avoid distractions from music or phone calls while in traffic or other potentially dangerous environments.

Operating and storage temperatures and humidity

- Store in a place where the temperature is between -20°C (-4°F) and 50°C (122 °F) with up to 90% relative humidity.
- Operate in a place where the temperature is between 0°C (32°F) and 45°C (113 °F) with up to 90% relative humidity.

## General information

To avoid damage or malfunction:

### Caution

- Do not expose headphones to excessive heat.
- Do not drop your headphones.
- Headphones shall not be exposed to dripping or splashing. (Refer to the IP rating of specific product)
- Do not allow your headphones to be submerged in water.
- Do not use any cleaning agents containing alcohol, ammonia, benzene, or abrasives.
- Use a clean, damp cloth to clean your headphones - especially the sound conduits and the microphone holes - regularly and avoid buildup of substances such as sweat or earwax.
- If any sweat or water droplets are left in the sound conduits, air holes or microphone holes, the sound level will temporarily drop or cut out entirely. This is not a malfunction. Use a soft, damp cloth to dry the headphones thoroughly. Alternatively, remove the earbud tips, turn the sound conduits downward and gently tap the headphones about five times on a dry cloth or similar to remove any water collected inside.
- Be sure the headphones are completely dry before charging and using. Avoid using disposable alcohol pads or other substances for cleaning.
- The equipment is supplied only by external power source which output capacity is less than 15W.

## Disposal of your old product



Your product is designed and manufactured with high quality materials and components which can be recycled and reused.



This symbol on a product means that the product is covered by European Directive 2012/19/EU.



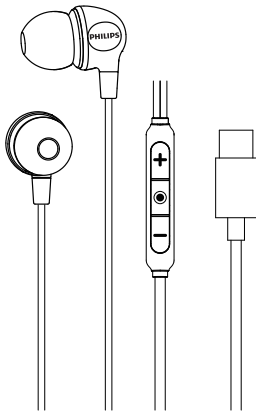
The symbol indicates DC voltage

## 2 Your in-ear headphones with mic

Congratulations on your purchase, and welcome to Philips! To fully benefit from the support that Philips offers, register your product at [www.philips.com/support](http://www.philips.com/support). With these Philips In-Ear Headphones With Mic you can:

- Enjoy powerful 10 mm drivers for dynamic bass and clear sound
- Enjoy in-line integrated mic and pick-up button for convenient calls
- Integrated microphone and call button
- Enjoy quality sound

### What's in the box

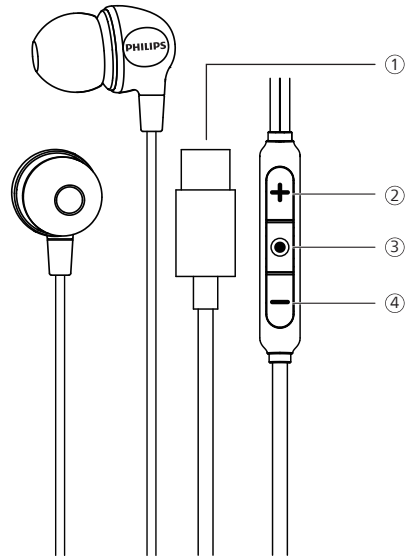


In-ear headphones with mic TAE2100



Eartips x 3 pairs

### Overview of in-ear headphones with mic



- ① USB-C connector
- ② Volume Up
- ③ MFB
- ④ Volume Down

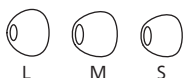
## 3 How to wear

---

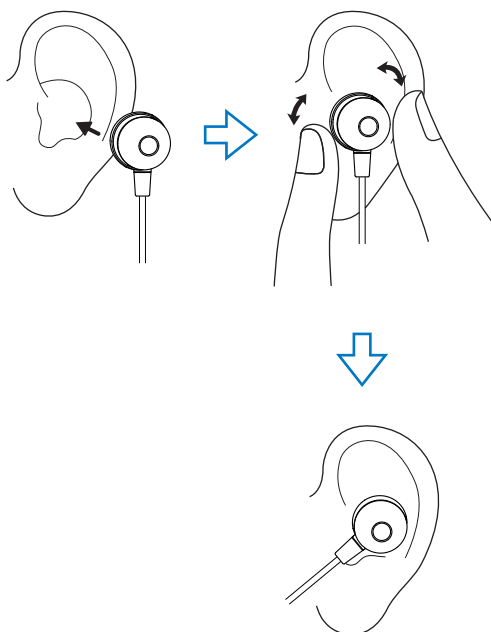
### Select suitable ear tips for optimum fit

A tight, secure fit will provide the best sound quality.

- 1 Test which ear tips provide you with the best sound and wearing comfort.
- 2 3 sizes of silicone ear tips are provided : large, medium, small.



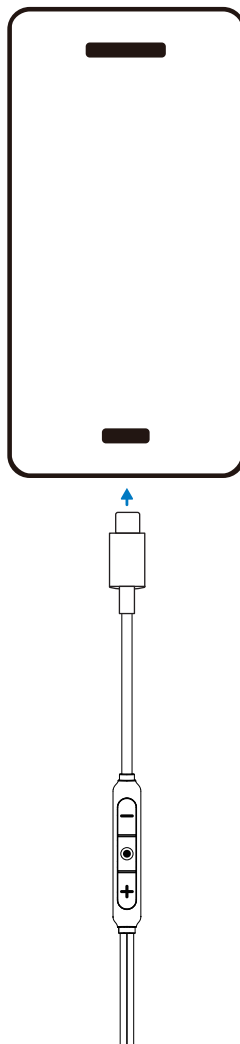
- 3 Check left or right orientation of the headphones.
- 4 Insert the headphones into the ears and twist slightly until a secure fit is achieved.



## 4 Use your headphones

---

Connect headphone to your device via USB-C connector.



## Manage your calls and music

### Music control

Task	Button	Operation
Play or pause music	<b>MFB</b>	Tap once
Next track	<b>MFB</b>	Double tap
Previous track	<b>MFB</b>	Triple tap
Adjust volume +	<b>+</b>	Tap once or long touch
Adjust volume -	<b>-</b>	Tap once then long touch



#### Note

You will hear a tone that indicates when the volume has reached maximum level.

### Call control

Task	Button	Operation
Pick up/ Hang up call	<b>MFB</b>	Single tap
Reject call	<b>MFB</b>	Press and hold for more than 2 seconds

## 5 Technical data

### Sound

- Frequency range: 20-20,000 Hz
- Speaker diameter: 10 mm
- Impedance: 16 Ohm
- Maximum power input: 3 mW
- Sensitivity: 95dB (1kHz, 1mW)

### Conectivity

- Cable Connection: Two-parallel, symmetric
- Cable length: 1.2 m
- Microphone: Built-in microphone
- Connector type: USB-C

### Convenience

- Volume control
- Type of controls: Button
- Call control
- Play / Pause

### Design

- Ear coupling material: Silicone
- Ear fitting: In-ear
- In-ear fitting type: Silicone ear-tip



#### Note

- Specifications are subject to change without notice.



MMD Hong Kong Holding Limited. All rights reserved. Specifications are subject to change without notice. Philips and the Philips Shield Emblem are registered trademarks of Koninklijke Philips N.V. and are used under license. This product has been manufactured by and is sold under the responsibility of MMD Hong Kong Holding Limited or one of its affiliates, and MMD Hong Kong Holding Limited is the warrantor in relation to this product. All other company and product names may be trademarks of its respective companies with which they are associated.

