


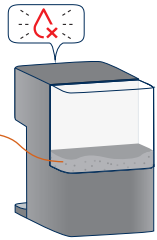
# Dispenser Maintenance & Cleaning Guidelines

## 1 How to Refill the Tap Water Tank

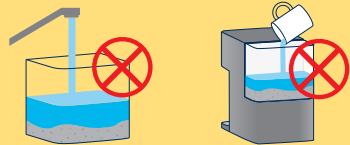
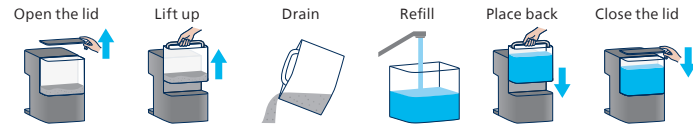


**NEVER add water before draining**

When the  starts flashing, it's time to drain the **water for replacement** in the tank.



Follow these simple steps to keep your water pure, fresh, and always ready to drink.



**Do not** add water before emptying.  
**Do not** open the lid to pour directly.

**Incorrect operation will cause**



Water flow blockage



Reduced filtration efficiency



Damage to machine components

## 2 Waterway Cleaning

Recommend cleaning the waterway both weekly and when recommissioning the unit after prolonged non-use.

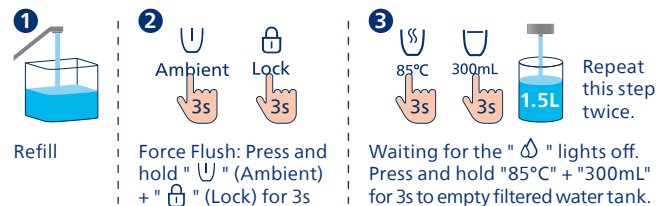
Follow the procedures corresponding to the model you own.

**Built-in filtered water tank**

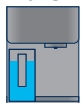


ADD6901, ADD6910, ADD6911

**Cleaning cycle**

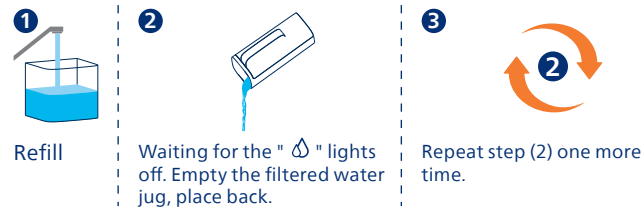


**Portable filtered water jug**



ADD6902, ADD6912, ADD6920, ADD6921, ADD6922, ADD6951, ADD6991

**Cleaning cycle**



**Vary the operation based on the following scenarios.**

**For weekly maintenance**

**X 2**

**For a period of non-use**

**X 3**

**For newly replaced filter**

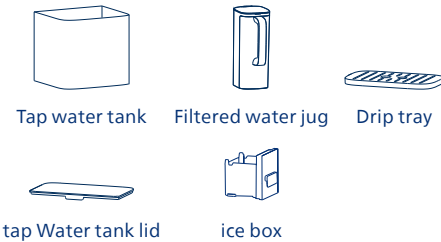
**X 4**

## 3 Components Cleaning

**3.1 Detachable components routine maintenance**

- For weekly maintenance
- For a period of non-use
- When visible soiling is present.

(1) Parts need to be cleaned.



note: The above parts may not be included in every product. Please refer to the actual product you own.

(2) Rinse with clean water below 45°C, mild detergent can be used if needed.

(3) Do not put in the dishwasher, and do not use alcohol or strong acid, alkaline, or harsh chemical detergents.



no dishwasher

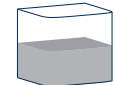
no alcohol

no harsh chemical detergents

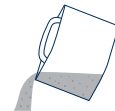
**3.2 Tank Descaling**

**Recommended cleaning interval:**

- Clean every three months
- When water scale is visible.



(1) Draining

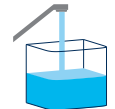


(2) Descaling  
Add 3L water & 30g food-grade citric acid. Sit for 2 hours.



2h

(3) Rinsing



## 4 Key notes

**Small tips for a consistent good experience.**

- (1) For optimal performance, always keep the dispenser in a cool, shaded area away from direct sunlight or spotlights.
- (2) If the water tastes bad:  
Filter used > 9 months → Replace the filter.  
Filter used < 9 months → Contact official service for inspection, cleaning & maintenance advice.
- (3) For long-term non-use (over 2 days):  
① Turn off the ice-water or ice-making functions (if applicable);  
② Empty the tap water tank, filtered water jug and ice box (if included);  
③ If unused > 1 week: Remove filter, wrap tightly in plastic wrap and store in refrigerator (2–5°C). Do not freeze.  
To restart: Reinstall filter, fill tap water tank, run 3 cleaning cycles as instructed.
- (4) If the product has been used for 3+ years and you have questions about cleaning or maintenance, please contact the official customer service center for details on parts replacement and cleaning services:

(852) 3188 4987

philipswater.support@centuryfield.com


# 純淨飲水機維護清潔指南

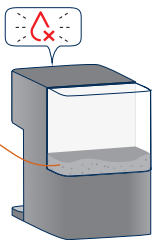
## 1 自來水水箱加水方式



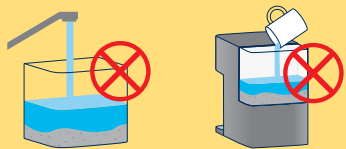
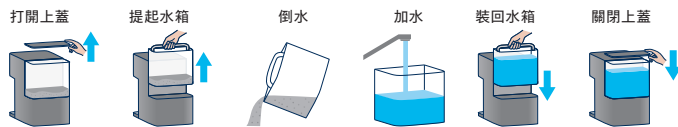
注意

### 在清空水箱前請勿加水

當  開始閃爍時，就表示需要更換原水箱裡的水。



請遵循以下簡單步驟，確保飲用水潔淨、新鮮且隨時可飲用。



請勿在清空水箱前加水。  
請勿打開上蓋直接加水。

### 不正確的操作可能導致



水流阻塞



過濾效能下降



機器元件損壞

## 2 水路清潔

建議每週清洗一次水路。飲水機長時間停用後，重新使用前亦需進行清洗。

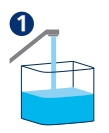
請依照所屬機型對應的操作流程執行（以下操作僅為示例）

內置式純淨水箱的機型

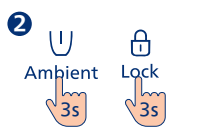


ADD6901, ADD6910, ADD6911

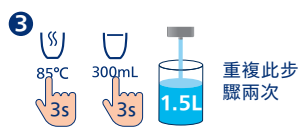
清洗循環



加水



強制沖洗：按住“ Ambient ”+ “ Lock ”按鍵 3 秒。



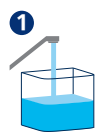
待“ 85°C ”熄滅後，按住“ 85°C ”+ “ 300mL ”按鍵 3 秒，排出內置水箱的水。  
重複此步驟兩次

便攜式純淨水壺的機型

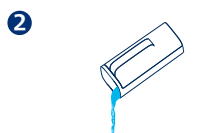


ADD6902, ADD6912, ADD6920, ADD6921, ADD6922, ADD6951, ADD6991

Cleaning cycle



加水



等待“ 85°C ”熄滅後，將水壺裡的水倒掉，然後放回原位。



再重複步驟 (2) 一次。

依據下列狀況調整清洗循環次數。

每週保養

X 2

長時間停用後 (超過 2 天)

X 3

更換新濾芯時

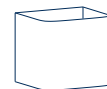
X 4

## 3 配件清潔

### 3.1 可拆卸配件的日常保養

- 每週保養
- 長時間停用後 (超過 2 天)
- 配件出現可見污漬時

(1) 需清潔配件



原水箱



純淨水壺



接水盤



原水箱蓋



冰盒

備註：上述配件非所有機型均配備，請以實際擁有的產品為準。

(2) 以 45°C 以下的水清洗，如有需要可搭配溫和清潔劑。

(3) 請勿放入洗碗機清洗，亦不得使用酒精或強酸、強鹼或刺激性化學清潔劑。



不可使用洗碗機



不可使用酒精

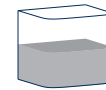


不可使用強效化學清潔劑

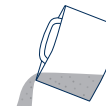
### 3.2 水箱除垢

建議清潔週期：

- 每三個月一次
- 水箱出現可見水垢時



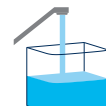
(1) 倒水



(2) 除垢  
加入 3 公升清水與 30 公克食品級檸檬酸，靜置 2 小時。



(3) 沖洗



## 4 重點注意事項

維持良好使用體驗的建議

- (1) 為確保最佳效能，請將純淨飲水機放置於陰涼處，避免陽光直射或射燈照射。
- (2) 若飲用水出現異味：  
濾芯使用超過 9 個月 → 請更換濾芯  
濾芯使用時長未滿 9 個月 → 聯繫官方客服諮詢檢查、清潔及保養建議。
- (3) 若預計長時間停用 (超過 2 天)：  
① 關閉冰水或製冰功能 (若適用)；  
② 清空原水箱、純淨水壺與冰盒 (若有配備)；  
③ 若預計停用超過 1 週：取出濾芯，以保鮮膜緊密包裹後存放於雪櫃 (2-5°C)。切勿冷凍。  
重新啟動時：重新安裝濾芯，添加自來水，並依指示執行 3 次清洗循環。
- (4) 若產品已使用 3 年或以上，對產品的清潔及保養有任何疑問，歡迎聯絡官方客服中心，了解配件更換及清洗服務的詳情：

(852) 3188 4987

philipswater.support@centuryfield.com