

400.00 mm

PHILIPS

Soundbar

3000 Series

TAB3100



184.50 mm

User manual

Register your product and get support at www.philips.com/support

1 Safety Information

Read and understand all instructions before you use your product. If damage is caused by failure to follow instructions, the warranty does not apply.

Safety

Risk of electric shock or fire!

- Before you make or change any connections, make sure that all devices are disconnected from the power outlet.
- Never expose the product and accessories to rain or water. Never place liquid containers, such as vases, near the product. If liquids are spilled on or into the product, disconnect it from the power outlet immediately. Contact Consumer Care to have the product checked before use.
- Never place the product and accessories near naked flames or other heat sources, including direct sunlight.
- Never insert objects into the ventilation slots or other openings on the product.
- Where the mains plug or an appliance coupler is used as the disconnection device, the disconnection device shall remain readily operable.
- When you disconnect the power cord, always pull the plug, never the cable.
- Use the product in tropical and/or moderate climates.

Risk of short circuit or fire!

- For identification and supply ratings, see the type plate at the back or bottom of the product.
- Before you connect the product to the power outlet, ensure that the power voltage matches the value printed on the back or bottom of the product. Never connect the product to the power outlet if the voltage is different.

Risk of injury or damage to this product!

- Wall mounting of this product must be in accordance with the installation instructions. Use only the supplied wall mount bracket (if available). Improper wall mounting may result in accident, injury or damage. If you have any query, contact Consumer Care in your country.
- Never place the product or any objects on power cords or on other electrical equipment.
- If the product is transported in temperatures below 5°C, unpack the product and wait until its temperature matches room temperature before connecting it to the power outlet.
- Parts of this product can be made of glass. Handle with care to avoid injury and damage.

Risk of overheating!

- Never install this product in a confined space. Always leave a space of at least four inches around the product for ventilation. Ensure curtains or other objects never cover the ventilation slots on the product.

Care for your product

Use only microfiber cloth to clean the product.

Care of the environment

Disposal of your old product and battery



Your product is designed and manufactured with high quality materials and components which can be recycled and reused.



This symbol on a product means that the product is covered by European Directive 2012/19/EU.

Compliance

This product complies with the radio interference requirements of the European Community. Hereby TP Vision Europe B.V. declares that this product is in compliance with the essential requirements and other relevant provisions of Directive 2014/53/EU. You can find the Declaration of Conformity on www.p4c.philips.com.

Help and support

For extensive online support, visit www.philips.com/support to:

- Download the user manual and the quick start guide.
- Watch video tutorials (available only for selected models).
- Find answers to frequently answered questions (FAQs).
- Email us a question.
- Chat with our support representative.

Follow the instructions on the website to select your language, and then enter your product mode number. Alternatively, you can contact Consumer Care in your country. Before you contact, note down the model number and serial number of your product. You can find this information on the back or bottom of your product.



Specifications are subject to change without notice. Please visit www.philips.com/support for the latest updates and documents. Philips and the Philips Shield Emblem are registered trademarks of Koninklijke Philips NV, and are used under license. This product has been manufactured by and is sold under the responsibility of MMD Hong Kong Holding Limited, or one of its affiliates, and MMD Hong Kong Holding Limited, is the warrantor in relation to this product.

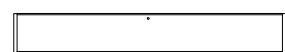


TAB3100/98_UM_V1.0

材质: L400*W184.5mm 105G铜板纸 双面单黑印刷 (ROHS/REACH) 用户手册与盾牌为首尾封面

2 Product Information

Product list



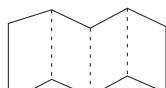
TAB3100



Power line



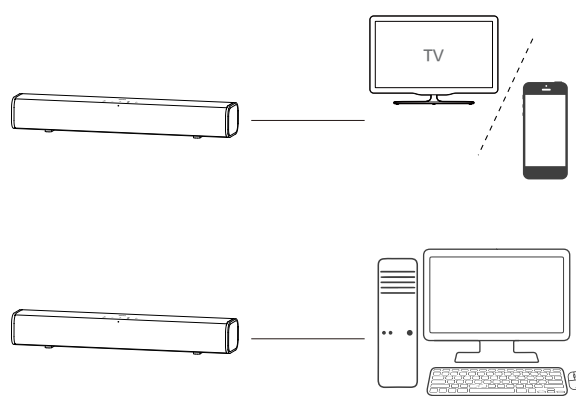
Audio cable



User manual

- Bluetooth version: V6.0
- Output power: 3.0Wx2
- Power input: DC 5V
- Frequency response: 100Hz~15kHz
- Dimension (W x H x D): 410x64x80mm
- Weight: 0.7Kg

3 Installation and operation instructions



The soundbar will enter standby mode when connecting the power line. Short press the button to turn on the soundbar.

Audio Input Mode:

Turn on the soundbar. Short press the button to switch to Audio Input Mode. The front indicator light is on green. Connect to the audio source device with AUX audio cable. Operate the sound source device to play music.

Bluetooth Mode:

1. Turn on the soundbar. Short press button to switch to Bluetooth mode. The front indicator light is flashing blue.
2. Search for "Philips TAB3100" using Bluetooth device and connect. The soundbar will emit prompt sound when pairing success. Operate the Bluetooth device to play music.
3. Press and hold the button for 3 seconds. Soundbar will enter Bluetooth pairing mode and emit a prompt sound.

USB Audio:

Turn on the soundbar. Soundbar will automatically enter USB Audio mode when the soundbar is connected to the computer through power cord.

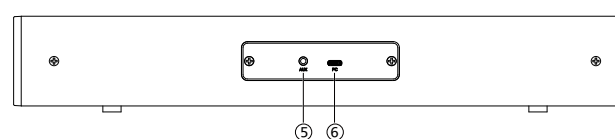
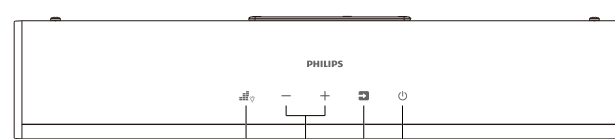
4 Troubleshooting

No sound from the soundbar speaker?

Check whether the USB cable is properly plugged into the Soundbar and the computer or power supply equipment; Check whether the audio cable is correctly plugged into the product and equipment; Adjust the volume button or computer volume.

To ensure the validity of the warranty, do not try to repair this equipment by yourself.

5 Product Overview



1. Short press to select EQ, long press to select Light Mode.
2. Short press to decrease the volume, long press to constant volume reduction. Short press to increase the volume, long press to constant volume increase.
3. Short press to select Source.
4. Short press to switch ON or OFF.
5. Connect external audio equipment.
6. Type-c power supply port/USB audio playback

6 Warranty Information

New Zealand
Direct Imports NZ Ltd
203 Nelson Street South
Hastings 4122
New Zealand
☎ +64 6 8737095

Australia
Tempo (Aust) Pty Ltd
PO Box 132 Frenchs Forest
NSW 1640 Australia
Customer service helplines:
☎ 1300 886 649 (calling within Australia):
Monday-Friday, 8:30am-6pm;
Saturday 9am-6pm
tempo.org/support

Singapore
Micro 2000 Technologies Asia Pte. Ltd.
Address: 80 Playfair Road, #07-12, Singapore 367998
Operating Hours:
9am to 6pm: Mondays - Fridays | 9am to 1pm: Saturdays
Closed on Sundays & Public Holidays
☎ T: (65) 6286 7333
✉ E: Philips.AV.SG@DHL.com

Malaysia
TP TELEVISION MALAYSIA SDN BHD UNIT D-2-50,
BLOCK DAHLIA 10 BOULEVARD, JALAN CEMPAKA 47400,
PETALING JAYA, SELANGOR
☎ Info Line: 1800-220-180

Thailand
Asia Pro Services Co., Ltd.
998/555 Moo3, Praeksa Subdistrict, Mueang Samut Prakan District, Samut Prakan Province, Post Code 10280 Thailand
☎ TEL: 662 1307271
Line Id: @philipstv
✉ email: ps2020@ps2020.in.th



The Bluetooth® word mark and logos are registered trademarks owned by Bluetooth SIG, Inc. and any use of such marks by MMD HongKong Holding Limited is under license. Other trademarks and trade names are those of their respective owners.