

A man with a goatee and a purple striped shirt is looking thoughtfully to the side. The background is a soft, out-of-focus indoor setting. The word 'SOLUTIONS' is written vertically in large blue letters on the right side of the image.

SOLUTIONS

Redefining performance in abdominal ultrasound

Elevate Plus for EPIQ Elite and Affiniti

Worldwide obesity has nearly tripled since 1975.¹ Both obesity and alcohol consumption, which are increasing in many parts of the world, are key risk factors for liver disease.²

With Elevate Plus, stunning image quality with high resolution and clarity supports precise and confident diagnoses from routine scans to the most complex cases. Clinically tailored tools are designed to help elevate imaging and workflow. This includes AI-powered Auto Measure Abdomen for fast exams and the newly updated Super Resolution MVI Pro with Time of Arrival and Time to Peak for more intuitive workflow.



Elevate imaging

nSight Plus Imaging Architecture³ is a more powerful beamforming technology providing next-generation imaging performance.⁴

C5-1 transducer

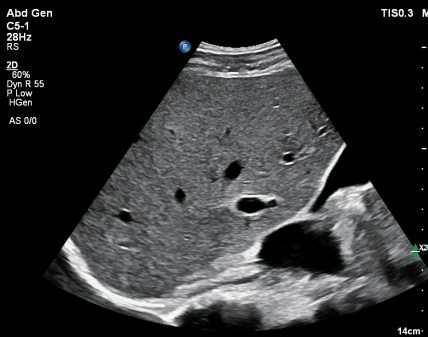
PureWave crystal transducer technology provides outstanding image quality, even in technically difficult patients.⁵

eL18-4 transducer

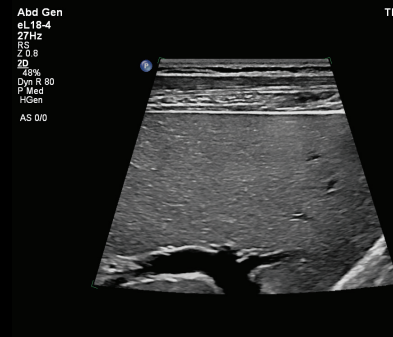
Features PureWave crystal technology for outstanding image quality eL18-4 **with presets for bowel and liver.**

mC7-2 transducer

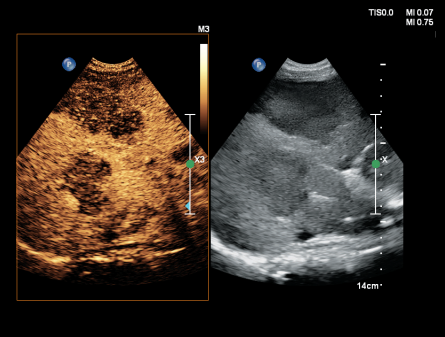
Designed for abdominal scanning and procedure guidance, this small-footprint ergonomic transducer allows imaging in tight intercostal spaces, helping reduce rib shadowing on images, as well as providing a more direct needle approach for procedures.⁶



Liver imaging with the C5-1 transducer



Liver imaging with the eL18-4 transducer



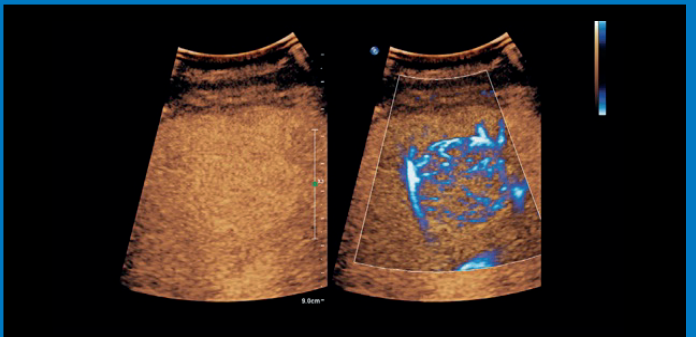
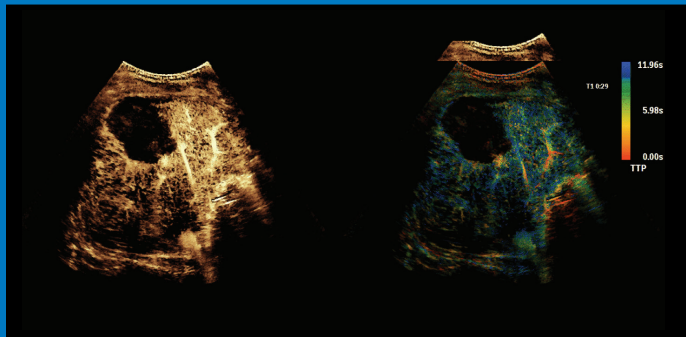
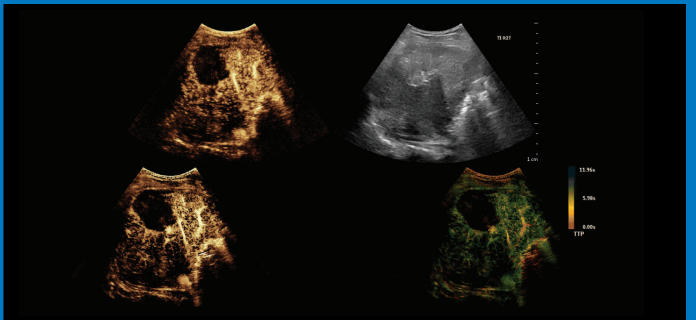
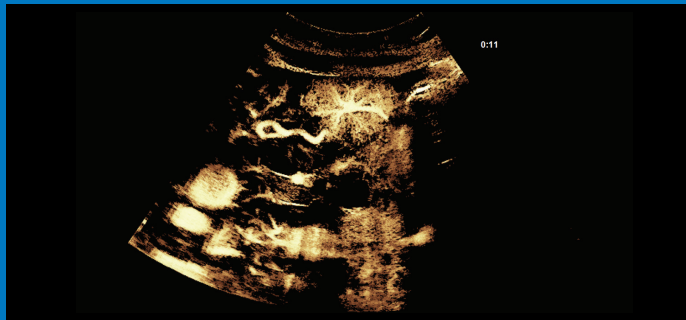
Liver metastases with the mC7-2 transducer

Newly updated: Super Resolution MVI Pro⁷

This **sensitivity-thinning algorithm** delivers higher sensitivity and improved resolution.⁸

Time of Arrival

Time of Arrival map provides a **clear visualization of temporal perfusion patterns** while preserving superb spatial resolution.⁸

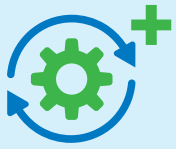


Time to Peak

Time to Peak map shows how quickly contrast bubbles reach their peak intensity, making **perfusion assessment more intuitive and precise.**⁸

CEUS MicroFlow Imaging (MFI)

Provides **remarkable sensitivity and detail in assessing blood flow** during a CEUS examination without negatively affecting bubble destruction.



Elevate workflows

Better workflow in every scan: Improved liver elastography with Auto ElastQ

Streamlines liver stiffness assessment by automatically selecting optimal frames and placing ROIs for measurement, enhancing reproducibility and incorporating many of the best practices for liver elastography measurements.



Reliable

99% reliability
of automated
acquired liver shear
wave measurements⁹



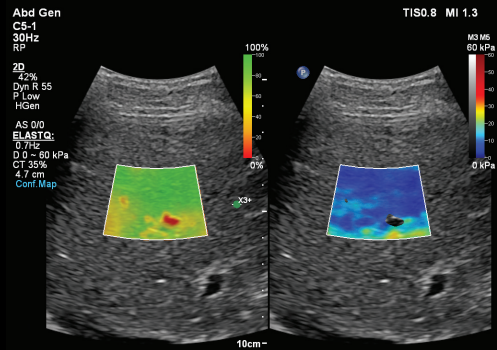
Fast

Up to **60% reduced**
exam time⁹



Efficient

Up to **29% fewer steps**
to acquire liver
shear wave
measurements⁹



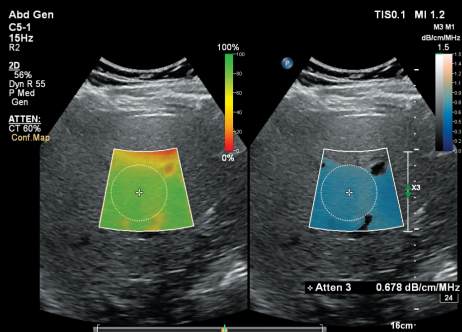
Confidence and stiffness maps for liver elastography

Liver Fat Quantification (LFQ)

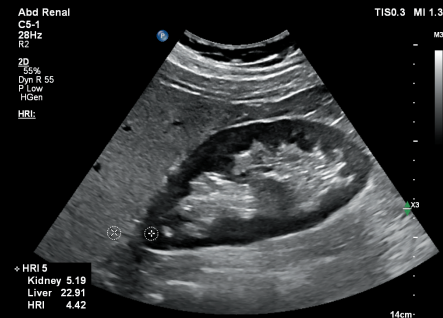
This all-in-one ultrasound solution is noninvasive and cost-effective,¹⁰ to **deliver liver fat quantification and liver stiffness assessment**. This is liver health assessment made easy.

Hepatorenal index (HRI)

Quantitatively **compares the echogenicity of the liver** to that of a healthy kidney.

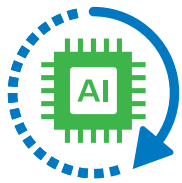


LFQ with the C5-1 transducer



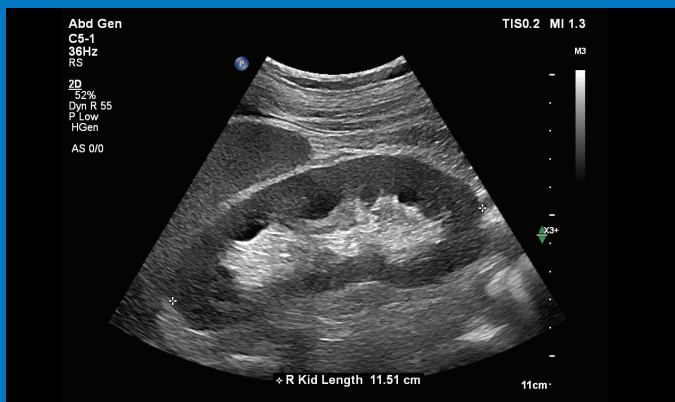
Echogenicity of liver to kidney





AI-powered Auto Measure Abdomen¹¹

Faster, more consistent measurements enhance both clinical confidence and workflow efficiency. Select a supported measurement, and Auto Measure Abdomen instantly recognizes the anatomy and automatically places calipers.



Auto Measure Abdomen of the sagittal kidney



Accurate

>93% accuracy
compared to manual measurements by clinical experts¹²



Fast

55% reduction
in measurement time¹³



Efficient

Up to 33% reduction
in button pushes¹³

References

1. World Health Organization Fact Sheet. Obesity and overweight. June 9, 2021. www.who.int/news-room/fact-sheets/detail/obesity-and-overweight.
2. Cheemerla S, Balakrishnan M. Global epidemiology of chronic liver disease. *Clin Liver Dis.* 2021;17(5):365-370. doi.org/10.1002/clld.1061.
3. Available on select transducers and on EPIQ Elite.
4. Compared to release 7.0.
5. Chen J, Panda R, Savord B. Realizing dramatic improvements in the efficiency, sensitivity and bandwidth of ultrasound transducers: Philips PureWave crystal technology. Koninklijke Philips N.V. Aug 2006. 2014;203(6):W715-W723. doi:10.2214/AJR.13.12061.
6. Philips EPIQ Elite specification sheet, document number 452299179761, May 2023.
7. Consult with your local sales representative regarding approved clinical indications in your region.
8. Compared to the previous version of Super Res MVI.
9. Internal documentation. Validation report D001526983, Claims list, Release 12.0, Rev D.
10. Compared to MR elastography.
11. Available on EPIQ Elite and Affiniti 70.
12. Internal documentation: Validation report D001785669. Obtained from a retrospective data analysis study involving data from 150 subjects (using MD.AI annotation tool, 3 clinical experts)..
13. Internal documentation: Validation report D001785669. Evidence was obtained on a subset of data from 5 subjects (7 clinical experts) assessing the measurement time for saved images and not the scan time.



2797

© 2026 Koninklijke Philips N.V. All rights are reserved. Philips reserves the right to make changes in specifications and/or to discontinue any product at any time without notice or obligation and will not be liable for any consequences resulting from the use of this publication.



www.philips.com/general-imaging-ultrasound

Printed in the Netherlands.
00001249-00-01 * MAY 2026