

PHILIPS



Elevate workflow with Elevate Plus

Elevate Plus for EPIQ Elite and Affiniti

Put our leading AI and automation to work for you

Our leading AI and automation, as well as other workflow improvements, **do even more** to help you achieve faster patient throughput.

EPIQ Elite Elevate Plus



HD MAX display
40% brighter
than OLED display technology¹

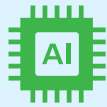
Affiniti Elevate Plus



Uses **29%** less power²

Uses **37%** less power³

Elevate Plus for EPIQ Elite and Affiniti



Auto Measure Abdomen

for 55% reduced measurement time^{4,5}



Auto ElastQ

reduces liver exam time by up to 60%⁶



Superb ergonomics

with multiple degrees of articulation for both control panel and monitor offer 720° of freedom for scanning comfort



2D Auto Cine and Color Auto Cine

for effortless stable frame selection⁷ and 68.9% reduced time to acquire first-time-right images⁷



Next Gen Auto Scan

improves image uniformity, reducing button pushes by up to 54% with pixel-by-pixel real-time optimization⁸



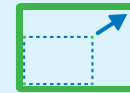
Intuitive tablet-like user interface

dramatically reduces reach and button pushes, with 40% to 80% less reach and 15% fewer steps⁹



Quick launch presets

offer a 55% decrease in button pushes during an abdominal exam¹⁰



MaxVue full-screen imaging

for 38% more viewing area¹¹



SmartExam

enhances user workflow with easily customizable system-guided protocols



Post-processing controls

that now include gain — reduce the need for repeat scans: 84% of users reported that rescanning the patient could be avoided due to unsatisfactory image quality resulting from inappropriate image settings¹²

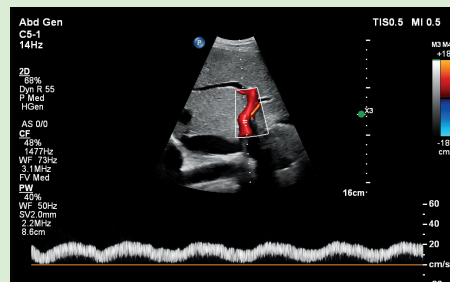


Battery backup

enables near-instantaneous boot up through a battery life of 45 minutes

Auto Doppler

adjusts optimal flow sensitivity and resolution, reducing 10 steps to 3 steps and 68% fewer button pushes¹³



Portal vein Doppler of the liver with the C5-1 transducer



Reduced number of button pushes by **68%**¹³



1. Internal specification comparison of OLED on EPIQ CVx versus EPIQ HD MAX.
2. Philips EPIQ Elite US EcoPassport.
3. Compared to predecessor HD11 XE. Affiniti EcoPassport
4. Internal documentation: Validation report D001785669. Evidence was obtained on a subset of data from 5 subjects (7 clinical experts) assessing the measurement time for saved images and not the scan time.
5. Available on EPIQ Elite, Affiniti 70, Affiniti 50.
6. Internal documentation. Validation report D001526983, Claims list, VM12.0, Rev D.
7. Internal documentation: Validation report D001785669. 68.9% (from 15.6% to 84.4%) increased rate of first-time-right images in abdominal scanning using Auto Cine.
8. When comparing release 10 performance to release 7 performance.
9. 2013 engineering study comparing Philips iU22 ultrasound system with EPIQ.
10. D001833994, Marketing Claim Evidence for Release 12.0 Workflow Efficiency Quick Launch Preset.
11. Compared to our previous monitor without MaxVue.
12. This is based on a sample size of n=37 users and is not statistically powered.
13. Philips Auto Doppler Clinical Study, Dec. 2011



© 2026 Koninklijke Philips N.V. All rights are reserved.
Philips reserves the right to make changes in specifications
and/or to discontinue any product at any time without notice
or obligation and will not be liable for any consequences
resulting from the use of this publication.

www.philips.com/general-imaging-ultrasound

Printed in the Netherlands.
00001418-00-01 * MAY 2026