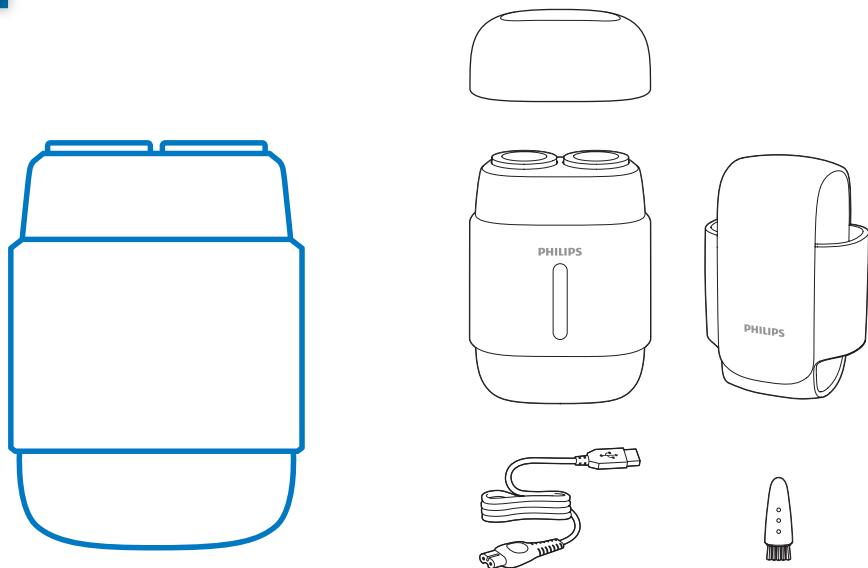
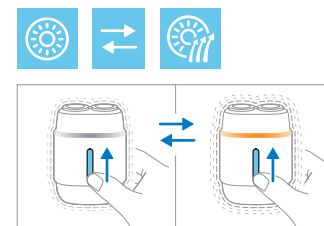
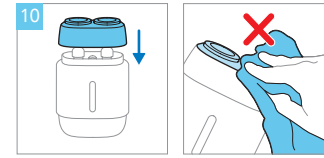
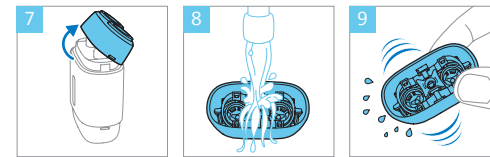
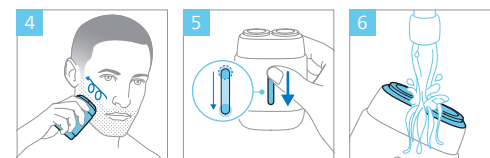
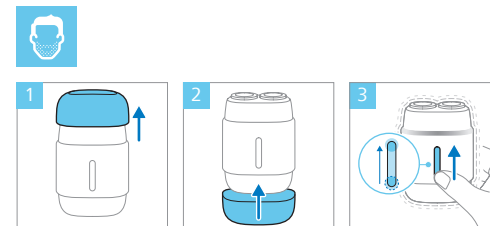
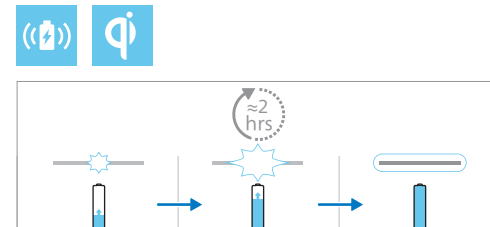
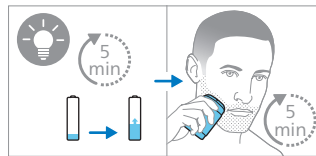
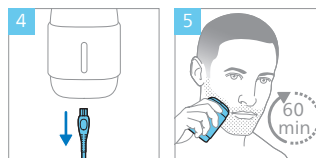
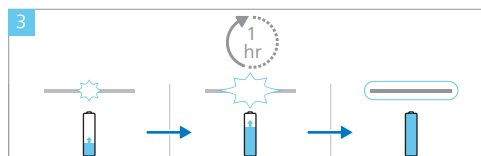
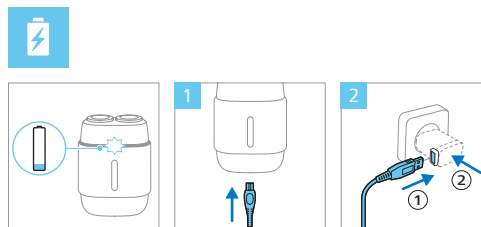
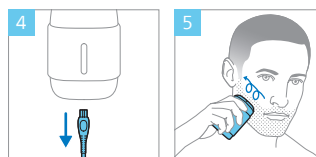
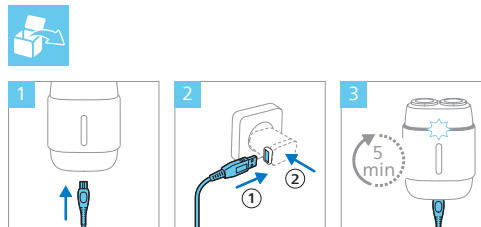
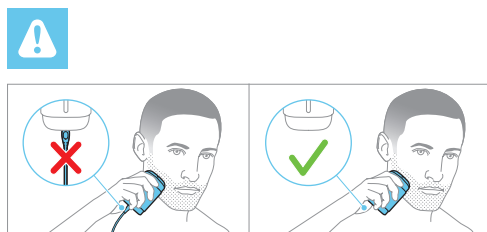


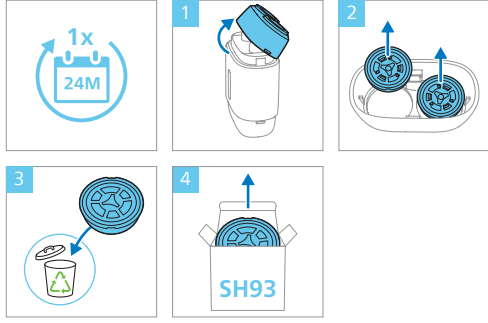
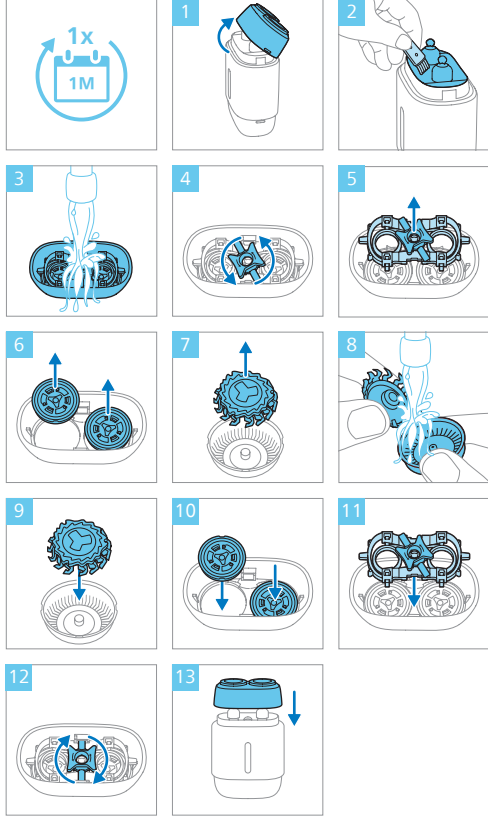
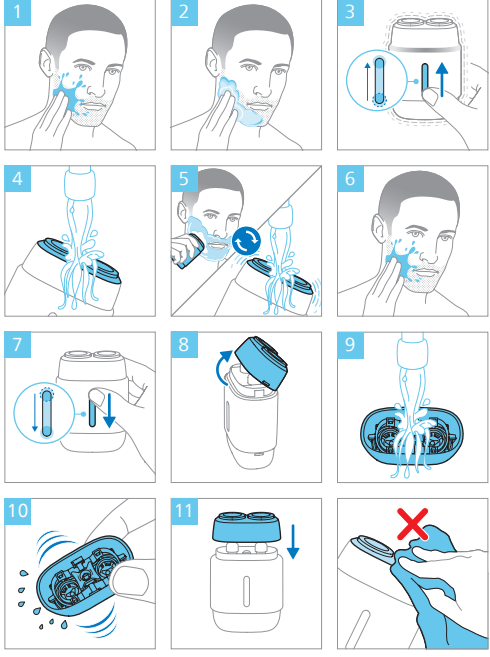
PHILIPS

S716, RQ910  
RQ912



© 2026 Koninklijke Philips N.V.  
All rights reserved  
3000.169.8709.1 (07/01/2026)





設備名稱：飛利浦電鬚刀

型號(型式)：S716, RQ910, RQ912

單元	限用物質及其化學符號					
	鉛 (Pb)	汞 (Hg)	鎘 (Cd)	六價鉻 (Cr <sup>6+</sup> )	多溴聯苯 (PBB)	多溴二苯醚 (PBDE)
電路板	-	0	0	0	0	0
刀片	0	0	0	0	0	0
塑膠部件	0	0	0	0	0	0
內部配線	0	0	0	0	0	0
金屬部件	-	0	0	0	0	0

備考 1. “超出0.1 wt %”及“超出0.01 wt %”係指限用物質之百分比含量超出百分比含量基準值。  
 備考 2. “0”係指該項限用物質之百分比含量未超出百分比含量基準值。  
 備考 3. “-”係指該項限用物質為排除項目。







and store the product at a temperature between 10 °C and 35 °C for optimal performance.
• Keep product and batteries away from fire and do not expose them to direct sunlight or high temperatures.
• If the product becomes abnormally hot or smelly, changes color or if charging takes longer than usual, stop using and charging the product and contact Philips.
• Do not place products and their batteries in microwave ovens or an induction cookers.
• Do not open, modify, pierce, damage or dismantle the product or battery to prevent batteries from heating up or releasing toxic or hazardous substances. Do not short-circuit, overcharge or reverse charge batteries.
• If batteries are damaged or leaking, avoid contact with the skin or eyes. If this occurs, immediately rinse well with water and seek medical care.

**Electromagnetic fields (EMF)**

This Philips appliance complies with all applicable standards and regulations regarding exposure to electromagnetic fields.

#### Support

For all product support, power consumption details and the EU Declaration of Conformity, please visit **www.philips.com/support**.

#### Recycling

• This symbol means that electrical products and batteries shall not be disposed of with normal household waste (Fig. 5).
• Follow your country's rules for the separate collection of electrical products and batteries.

#### Removal of built-in rechargeable battery

The built-in rechargeable battery must only be removed by a qualified professional when the appliance is discarded. Before removing the battery, make sure that the appliance is disconnected from the wall socket and that the battery is completely empty.

**Take any necessary safety precautions when you handle tools to open the appliance and when you dispose of the rechargeable battery.**

**When you handle batteries, make sure that your hands, the product and the batteries are dry.**

**To avoid accidental short-circuiting of batteries after removal, do not let battery terminals come into contact with metal objects (e.g. coins, hairpins, rings). Do not wrap batteries in aluminum foil. Tape battery terminals or put batteries in a plastic bag before you discard them.**

- Check if there are screws in the housing of the appliance. If so, remove them.
- Remove any additional screws, panels or parts of the appliance until you see the printed circuit board with the rechargeable battery.
- Remove the rechargeable battery.

**Remove the battery from the device.**

**Remove the battery from the device.**

**Remove the battery from the device.**

**Remove the battery from the device.**

**Remove the battery from the device.**

**Remove the battery from the device.**

**Remove the battery from the device.**

**Remove the battery from the device.**

**Remove the battery from the device.**

**Remove the battery from the device.**

**Remove the battery from the device.**

**Remove the battery from the device.**

**Remove the battery from the device.**

**Remove the battery from the device.**

**Remove the battery from the device.**

**Remove the battery from the device.**

**Remove the battery from the device.**

**Remove the battery from the device.**

**Remove the battery from the device.**

**Remove the battery from the device.**

**Remove the battery from the device.**

**Remove the battery from the device.**

**Remove the battery from the device.**

**Remove the battery from the device.**

**Remove the battery from the device.**

**Remove the battery from the device.**

**Remove the battery from the device.**

#### Fjernelse af indbygget genopladeligt batteri

Det indbyggede genopladelige batteri skal kun fjernes af en kvalificeret fagmand, når apparatet kasseres. Før batteriet fjernes, skal du sørge for, at apparatet er taget ud af stikkontakten, og at batteriet er fuldstændigt afladet.

**Overhold de nødvendige sikkerhedsforanstaltninger, når du anvender værktøj til at åbne apparatet, og når du bortskaffer det genopladelige batteri.**

**Når du håndterer batterier, skal du sørge for, at dine hænder, produktet og batterierne er tørre.**

**For at undgå en utilsigtet kortslutning af batterierne efter fjernelse, må du ikke lade batterierne komme i kontakt med metalgenstande (f.eks. monter, hårnåle, ringe). Batterierne må ikke pakkes ind i aluminiumfolie. Sæt tape på batterierne, eller læg batterierne i en plastikpose, før du kasserer dem.**

- Kontrollér, om der er skrue i apparatets kabinet. Hvis der er, skal de fjernes.
- Fjern eventuelle ekstra skrue, paneler eller dele af apparatet, indtil du ser printkortet med det genopladelige batteri.
- Fjern det genopladelige batteri.

**Remove the battery from the device.**

**Remove the battery from the device.**

**Remove the battery from the device.**

**Remove the battery from the device.**

**Remove the battery from the device.**

**Remove the battery from the device.**

**Remove the battery from the device.**

**Remove the battery from the device.**

**Remove the battery from the device.**

**Remove the battery from the device.**

**Remove the battery from the device.**

**Remove the battery from the device.**

**Remove the battery from the device.**

**Remove the battery from the device.**

**Remove the battery from the device.**

**Remove the battery from the device.**

**Remove the battery from the device.**

**Remove the battery from the device.**

**Remove the battery from the device.**

**Remove the battery from the device.**

**Remove the battery from the device.**

**Remove the battery from the device.**

**Remove the battery from the device.**

**Remove the battery from the device.**

**Remove the battery from the device.**

**Remove the battery from the device.**

**Remove the battery from the device.**

**Remove the battery from the device.**

**Remove the battery from the device.**

**Remove the battery from the device.**

**Remove the battery from the device.**

**Remove the battery from the device.**

**Remove the battery from the device.**

**Remove the battery from the device.**

**Remove the battery from the device.**

**Remove the battery from the device.**

**Remove the battery from the device.**

**Remove the battery from the device.**

**Remove the battery from the device.**

**Remove the battery from the device.**

**Rücknahme von Altgeräten**

Rücknahmepflichtig sind Geschäfte mit einer Verkaufsoberfläche von mindestens 400 m² für Elektro- und Elektronikgeräte sowie diejenigen Lebensmittelgeschäfte mit einer Gesamtverkaufsoberfläche von mindestens 800 m², die mehrmals pro Jahr oder dauerhaft Elektro- und Elektronikgeräte anbieten und auf dem Markt bereitstellen.

**Diese Händler müssen:**

• beim Verkauf eines neuen Elektrogeräts ein Altgerät der gleichen Art kostenfrei zurücknehmen (1:1-Rücknahme); auch bei Lieferungen nach Hause -• bis zu drei kleine Altgeräte (keine äußere Abmessung größer als 25 cm) kostenfrei im Verkaufsgeschäft oder in unmittelbarer Nähe zurücknehmen, ohne Neukaufverpflichtung. Rücknahmepflichten gelten auch für den Versandhandel, wobei die Pflicht zur 1:1-Rücknahme im privaten Haushalt nur für Wärmeüberträger (Kühl-/Gefriergeräte, Klimaanlage u.ä.), Bildschirmeräte und Großgeräte gilt; für die 1:1-Rücknahme von Lampen, Kleingeräten und kleinen ITK-Geräten sowie die Qi 1:1-Rücknahme müssen Versandhändler Rückgabemöglichkeiten in zumutbarer Entfernung zum Endverbraucher bereitstellen.

Die Philips GmbH ist Mitglied des Rücknahmesystems "take-e-back". Mehr Information unter: **www.take-e-back.de**. So Verbraucher über Philips Consumer Lifestyle B.V. ein Produkt erworben haben, können sie ebenso die Möglichkeiten des Systems nutzen.

**Rückgabemöglichkeiten für Verbraucher in Österreich**

Die Philips Austria GmbH und die Philips Consumer Lifestyle B.V. sind Mitglied beim Sammel- und Verwertungssystem des UPH. Sammelstellen und Öffnungszeiten siehe <https://ufu.at/>. So Verbraucher das Produkt andernorts erworben haben, haben sie gemäß §5 EAG Anspruch auf eine 1:1-Rücknahme. Für Haushalts- und Gewerbeverpackungen sind die Philips Austria GmbH und die Philips Consumer Lifestyle B.V. Mitglied beim Sammel- und Verwertungssystem Reclay Systems GmbH.

Wird das Gerät entsorgt, darf der integrierte Akku nur von einer qualifizierten Fachkraft entfernt werden. Bevor Sie den Akku entfernen, stellen Sie sicher, dass das Gerät nicht an einer Steckdose eingesteckt und der Akku vollständig entleert ist.

**Trefre Sie angemessene Sicherheitsvorkehrungen, wenn Sie das Gerät mithilfe von Werkzeugen öffnen und den wiederaufladbaren Akku entsorgen.**

**Achten Sie beim Umgang mit Batterien darauf, dass Ihre Hände, das Produkt und die Batterien beim Einsetzen der Batterien trocken sind.**

**Um ein versehentliches Kurzschließen von Batterien nach dem Entfernen zu vermeiden, dürfen die Batterieschlüsse nicht mit Metallobjekten in Kontakt kommen (z. B. Münzen, Haarnadeln, Ringe). Wickeln Sie die Batterien nicht in Alufolie. Stecken Sie die Batterien in einen Plastikbeutel, bevor Sie sie entsorgen.**

**Remove the battery from the device.**

- Prüfen Sie, ob sich im Gehäuse des Geräts Schrauben befinden. Wenn ja, bauen Sie diese aus.
- Nehmen Sie etwaige weitere Schrauben, Abdeckungen oder Teile vom Gerät ab, bis Sie die Platine mit dem Akku sehen.
- Entnehmen Sie den Akku.

**Remove the battery from the device.**

**Remove the battery from the device.**

**Remove the battery from the device.**

**Remove the battery from the device.**

**Remove the battery from the device.**

**Remove the battery from the device.**

**Remove the battery from the device.**

**Remove the battery from the device.**

**Remove the battery from the device.**

**Remove the battery from the device.**

**Remove the battery from the device.**

**Remove the battery from the device.**

**Remove the battery from the device.**

**Remove the battery from the device.**

**Remove the battery from the device.**

**Remove the battery from the device.**

**Remove the battery from the device.**

**Remove the battery from the device.**

**Remove the battery from the device.**

**Remove the battery from the device.**

**Remove the battery from the device.**

**Remove the battery from the device.**

**Remove the battery from the device.**

**Remove the battery from the device.**

**Remove the battery from the device.**

**Remove the battery from the device.**

**Remove the battery from the device.**

**Remove the battery from the device.**

**Remove the battery from the device.**

**Remove the battery from the device.**

**Remove the battery from the device.**

**Remove the battery from the device.**

**Remove the battery from the device.**

**Remove the battery from the device.**

**Remove the battery from the device.**

**Remove the battery from the device.**

**Remove the battery from the device.**

**Remove the battery from the device.**

**Remove the battery from the device.**

**Remove the battery from the device.**

**Remove the battery from the device.**

**Remove the battery from the device.**

**Remove the battery from the device.**

#### Eliminación de la batería recargable incorporada

La batería recargable incorporada solo debe ser retirada por un profesional cualificado cuando se desecha el aparato. Antes de extraer la batería, asegúrese de que el aparato esté desconectado de la toma de corriente y de que la batería esté completamente descargada.

**Tome las precauciones de seguridad necesarias cuando maneje herramientas para abrir el aparato y se deshaga de la batería recargable.**

**Al manipular las baterías, asegúrese de que sus manos, el producto y las baterías estén secos.**

**Para evitar cortocircuitos accidentales de las baterías después de la extracción, no deje que los terminales de la batería entren en contacto con objetos metálicos (por ejemplo, monedas, horquillas, anillos). No envuelva las baterías en papel de aluminio. Coloque cinta adhesiva en los terminales de las baterías o introduzca las baterías en una bolsa de plástico antes de desearchiarlas.**

**Remove the battery from the device.**

**Remove the battery from the device.**

**Remove the battery from the device.**

**Remove the battery from the device.**

**Remove the battery from the device.**

**Remove the battery from the device.**

**Remove the battery from the device.**

**Remove the battery from the device.**

**Remove the battery from the device.**

**Remove the battery from the device.**

**Remove the battery from the device.**

**Remove the battery from the device.**

**Remove the battery from the device.**

**Remove the battery from the device.**

**Remove the battery from the device.**

**Remove the battery from the device.**

**Remove the battery from the device.**

**Remove the battery from the device.**

**Remove the battery from the device.**

**Remove the battery from the device.**

**Remove the battery from the device.**

**Remove the battery from the device.**

**Remove the battery from the device.**

**Remove the battery from the device.**

**Remove the battery from the device.**

**Remove the battery from the device.**

**Remove the battery from the device.**

**Remove the battery from the device.**

**Remove the battery from the device.**

**Remove the battery from the device.**

**Remove the battery from the device.**

**Remove the battery from the device.**

**Remove the battery from the device.**

**Remove the battery from the device.**

**Remove the battery from the device.**

**Remove the battery from the device.**

**Remove the battery from the device.**

**Remove the battery from the device.**

**Remove the battery from the device.**

**Remove the battery from the device.**

**Remove the battery from the device.**

**Remove the battery from the device.**

**Remove the battery from the device.**

**Remove the battery from the device.**

**Remove the battery from the device.**

**Remove the battery from the device.**

**Remove the battery from the device.**

**Remove the battery from the device.**

**Remove the battery from the device.**

**Remove the battery from the device.**

**Remove the battery from the device.**

**Remove the battery from the device.**

**Remove the battery from the device.**

**Remove the battery from the device.**

**Remove the battery from the device.**

**Remove the battery from the device.**

**Remove the battery from the device.**

- Vérifiez si des vis sont présentes dans le boîtier de l'appareil. Si c'est le cas, enlevez-les.
- Retirez les vis, panneaux ou pièces supplémentaires de l'appareil jusqu'à ce que le circuit imprimé et la batterie rechargeable soient visibles.
- Retirez la batterie rechargeable.



Points de collecte sur [www.quefairedemesdechets.fr](http://www.quefairedemesdechets.fr)

**Remove the battery from the device.**

**Remove the battery from the device.**

**Remove the battery from the device.**

**Remove the battery from the device.**

**Remove the battery from the device.**

**Remove the battery from the device.**

**Remove the battery from the device.**

**Remove the battery from the device.**

**Remove the battery from the device.**

**Remove the battery from the device.**

**Remove the battery from the device.**

**Remove the battery from the device.**

**Remove the battery from the device.**

**Remove the battery from the device.**

**Remove the battery from the device.**

**Remove the battery from the device.**

**Remove the battery from the device.**

**Remove the battery from the device.**

**Remove the battery from the device.**

**Remove the battery from the device.**

**Remove the battery from the device.**

**Remove the battery from the device.**

**Remove the battery from the device.**

**Remove the battery from the device.**

**Remove the battery from the device.**

**Remove the battery from the device.**

**Remove the battery from the device.**

**Remove the battery from the device.**

**Remove the battery from the device.**





