

PHILIPS

LCD monitor

Business Monitor

2000 series

24 (23.8" / 60.47 cm diag.)

1920 x 1080 (Full HD)

24B2N2200G



Eye comfort engineered for the day ahead

Work comfortably and stay productive with Full HD clarity and a smooth 144Hz refresh rate. SoftBlue Technology and Circular Polarization help reduce eye strain, making long hours easier on your eyes.

Designed for the way you work

- Built-in stereo speakers for multimedia
- D-Mode: Optimized for subtle grayscale perception
- Eyesafe certified blue light protection and color accuracy
- SoftBlue Technology: for comfortable viewing
- Less eye fatigue with Flicker-free technology

Easy to experience

- VESA mount for convenience
- HDMI ensures universal digital connectivity

Superb Picture Quality

- 144Hz refresh rates for ultra-smooth, brilliant images
- 16:9 Full HD display for crisp detailed images
- IPS LED wide view technology for image and color accuracy

Highlights

IPS technology



IPS displays use an advanced technology which gives you extra wide viewing angles of 178/178 degree, making it possible to view the display from almost any angle. Unlike standard TN panels, IPS displays gives you remarkably crisp images with vivid colors, making it ideal not only for Photos, movies and web browsing, but also for professional applications which demand color accuracy and consistent brightness at all times.

16:9 Full HD display



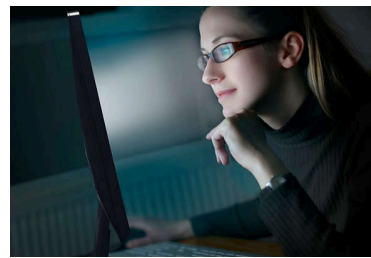
Picture quality matters. Regular displays deliver quality, but you expect more. This display features enhanced Full HD 1920 x 1080 resolution. With Full HD for crisp detail paired with high brightness, incredible contrast and realistic colors expect a true to life picture.

144Hz Fast refresh



This monitor is equipped with a 144Hz refresh rate which effectively reduces motion blur and input lag from your display. Whether you're working on detailed creative work, multitasking, competitive gaming, or just browsing the web — you enjoy an enhanced desktop experience with better visual motion clarity and reduced eye strain.

SoftBlue Technology with Circular Polarization



SoftBlue LED technology enhances visual comfort by reducing harmful blue light. With the low blue-light panel, the ratio of display emission light in the range of 415-455 nm to 400-500nm is reduced to less than 50%. It also utilizes unique Circular Polarization technology, which produces an improved natural light output compared to linear polarization. The result is optimal visual comfort and minimized eye strain. This technology is also tested and certified by TÜV Rheinland Low Blue Light (Hardware Solution) for its effectiveness in reducing blue light emissions and relieving eye strain.

Built-in stereo speakers



A pair of high quality stereo speakers built into a display device. It can be visible front firing, or invisible down firing, top firing, rear firing, etc depending on model and design.

Flicker-free technology



Due to the way brightness is controlled on LED-backlit screens, some users experience flicker on their screen which causes eye fatigue. Philips Flicker-free Technology applies a new solution to regulate brightness and reduce flicker for more comfortable viewing.

eyesafe® CERTIFIED 2.0 (RPF 40)



The Philips display meets the eyesafe® CERTIFIED 2.0 standard to truly protect you from the long exposure to blue light. The always-on blue light filter not only helps reduce digital eye strain, but also guarantees color integrity.



Built-in Speaker

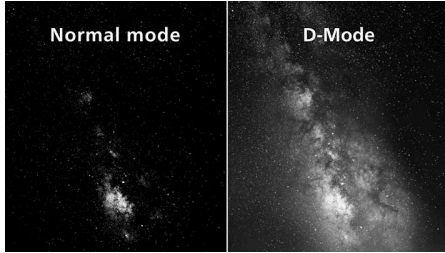


Flicker-free



Highlights

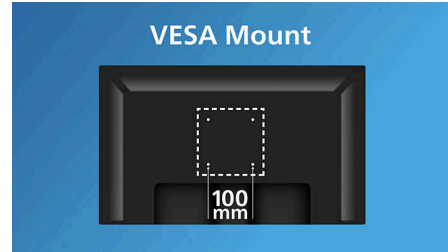
D-Mode



Reveal every hidden detail in the dark-toned areas of your display. D-Mode enhances grayscale detail to make subtle tonal differences easier to see. Based on the grayscale perception model defined by the DICOM Part 14 GSDF standard, it improves the visibility of details that standard display settings may miss. The result is clearer differentiation between subtle shades

and improved detail visibility in grayscale content such as technical illustrations, scans, and other high-detail imagery.

VESA mount for convenience



Industry-standard VESA mounting holes ensure compatibility with most small form factor PCs and thin clients.

HDMI Ready



An HDMI-ready device has all the required hardware to accept High-Definition Multimedia Interface (HDMI) input. A HDMI cable enables high-quality digital video and audio all transmitted over a single cable from a PC or any number of AV sources (including set-top boxes, DVD players, A/V receivers and video cameras).

Specifications

Picture/Display

Panel Size: 23.8 inch/60.47 cm
Aspect ratio: 16:9
LCD panel type: IPS technology
Backlight type: W-LED system
Pixel pitch: 0.2745(H)mm x 0.2745(V)mm
Brightness: 350 cd/m²
Display colors: 16.7M (8 bits)
Color gamut (typical): NTSC 101%*, sRGB 111%*
Contrast ratio (typical): 1500:1
SmartContrast: 50,000,000:1
Response time (typical): 4 ms (Gray to Gray)*
Viewing angle: 178° (H) / 178° (V), @ C/R > 10
Picture enhancement: SmartImage
Maximum resolution: VGA: 1920x1080@75Hz;
HDMI/ DP: 1920x1080@144Hz.
Effective viewing area: 527.04(H) x 296.46(V)
mm
Scanning Frequency: VGA: 30k - 75 KHz (H)/ 48
Hz - 75 Hz (V); HDMI/DP: 30k - 170 kHz (H)/ 48 -
144 Hz (V)
sRGB
SoftBlue
Flicker-free
Pixel Density: 93 PPI
Display Screen Coating: Anti-Glare, 3H, Haze
25%
EasyRead
Adaptive sync (VRR)
EyeSafe
DICOM (D-mode)

Connectivity

Signal Input: VGA X1, HDMI1.4 X1, DP 1.4x1
Sync Input: Separate Sync, Sync on Green
Audio (In/Out): Audio out, Audio-in
HDCP: HDCP 1.4 (HDMI/DP)

Convenience

Built-in Speakers: 2Wx2
Plug & Play Compatibility: DDC/CI, Mac OS X,
sRGB, Windows 11 / 10
User convenience: SmartImage, Input,
Brightness, Menu, Power On/Off
OSD Languages: Brazil Portuguese, Czech, Dutch,
English, French, Finnish, German, Greek,
Hungarian, Italian, Japanese, Korean,
Portuguese, Polish, Russian, Simplified Chinese,

Spanish, Swedish, Traditional Chinese, Turkish,
Ukrainian
Other convenience: Kensington lock, VESA
mount (100x100mm)
Control software: SmartControl

Stand

Tilt: -5/25 degree

Power

ECO mode: 8.5 W (typ.)
Power supply: Built-in, 100-240VAC, 50-60Hz
Off mode: 0.3 W (typ.)
On mode: 13.37 W (typ.) (EnergyStar test
method)
Standby mode: 0.3 W (typ.)
Power LED indicator: Operation - White, Standby
mode- White (blinking)

Dimensions

Packaging in mm (WxHxD): 650 X 420 X 124 mm
Product without stand (mm): 544 X 321 X
48 mm
Product with stand(max height): 544 X 426 X
181 mm

Weight

Product with packaging (kg): 5.04 kg
Product with stand (kg): 2.88 kg
Product without stand (kg): 2.60 kg

Operating conditions

Altitude: Operation: +12,000ft (3,658m), Non-
operation: +40,000ft (12,192m)
Temperature range (operation): 0°C to 40 °C
Relative humidity: 20%-80 %
Temperature range (storage): -20°C to 60 °C
MTBF (demonstrated): 70,000 hrs (excluded
backlight)

Sustainability

Environmental and energy: Energy Star, EPEAT*,
RoHS
Post consumer recycled plastic: 85%
Recyclable packaging material: 100 %
Specific Substances: Mercury free, PVC / BFR free
housing

Compliance and standards

Regulatory Approvals: CB, CE Mark, CEL, CCC,
CECP, BSMI, UKCA, EMF, FCC, TCO Certified, TÜV
Rheinland Circular Polarization, TÜV Rheinland
Low Blue Light (Hardware Solution), eyesafe®
CERTIFIED 2.0, MEPS, PSB, KC, Korea MEPS

Cabinet

Finish: Texture
Foot: Black
Front bezel: Black
Rear cover: Black

