

PHILIPS

Headphones TAT3000



User manual

Register your product and get support at
www.philips.com/support

Contents

| | | |
|-------|--|----|
| 1 | Important safety instructions | 2 |
| | Hearing safety | 2 |
| | General information | 2 |
| <hr/> | | |
| 2 | Your True wireless earpieces | 3 |
| | What's in the box | 3 |
| | Other devices | 3 |
| | Overview of your True wireless earpieces | 4 |
| <hr/> | | |
| 3 | Get started | 4 |
| | Charge the battery | 4 |
| | Change the battery | 5 |
| | How to wear | 6 |
| | App download | 6 |
| | Pair for the first time | 6 |
| | Single earpiece (Mono mode) | 7 |
| | Pair with another Bluetooth device | 7 |
| | Multi-point connection | 7 |
| <hr/> | | |
| 4 | Use your earpieces | 8 |
| | Connect to your Bluetooth device | 8 |
| | Power on/off | 8 |
| | Control ANC (Active Noise Cancellation) | 8 |
| | Manage your calls and music | 9 |
| | Voice Assistant | 9 |
| | Charging box LED indicator status | 9 |
| <hr/> | | |
| 5 | Reset the earpieces | 10 |
| <hr/> | | |
| 6 | Technical data | 10 |
| <hr/> | | |
| 7 | Notice | 11 |
| | Declaration of conformity | 11 |
| | Disposal of your old product and battery | 11 |
| | Remove the integrated battery | 11 |
| | Environmental information | 12 |
| | Notice of compliance | 12 |
| <hr/> | | |
| 8 | Frequently asked questions | 13 |
| <hr/> | | |
| 9 | Trademarks | 14 |

1 Important safety instructions

Hearing safety



Danger

- To avoid hearing damage, limit the time you use headphones at high volume and set the volume to a safe level. The louder the volume, the shorter the safe listening time is.

- Be sure to observe the following guidelines when using your headphones.
- Listen at reasonable volumes for reasonable periods of time.
- Be careful not to adjust the volume continuously upwards as your hearing adapts.
- Do not turn up the volume so high that you can't hear what's around you.
- You should use caution or temporarily discontinue use in potentially hazardous situations.
- Excessive sound pressure from earpieces and headphones can cause hearing loss.
- Using headphones with both ears covered while driving is not recommended and may be illegal in some areas.
- For your safety, avoid distractions from music or phone calls while in traffic or other potentially dangerous environments.

Operating and storage temperatures and humidity

- Store in a place where the temperature is between -20°C (-4°F) and 50°C (122 °F) with up to 90% relative humidity.
- Operate in a place where the temperature is between 0°C (32°F) and 45°C (113 °F) with up to 90% relative humidity.
- Battery life may be shorter in high or low temperature conditions.

General information

To avoid damage or malfunction:



Caution

- Do not expose headphones to excessive heat.
- Do not drop your headphones.
- Headphones shall not be exposed to dripping or splashing. (Refer to the IP rating of specific product)
- Do not allow your headphones to be submerged in water.
- Do not charge your headphones when the connector or socket is wet.
- Do not use any cleaning agents containing alcohol, ammonia, benzene, or abrasives.
- Use a clean, damp cloth to clean your headphones - especially the sound conduits and the microphone holes - regularly and avoid buildup of substances such as sweat or earwax.
- If any sweat or water droplets are left in the sound conduits, air holes or microphone holes, the sound level will temporarily drop or cut out entirely. This is not a malfunction. Use a soft, damp cloth to dry the headphones thoroughly. Alternatively, remove the earbud tips, turn the sound conduits downward and gently tap the headphones about five times on a dry cloth or similar to remove any water collected inside.
- Be sure the headphones are completely dry before charging and using. Avoid using disposable alcohol pads or other substances for cleaning.
- The integrated battery shall not be exposed to excessive heat such as sunshine, fire or the like.
- Danger of explosion if battery is incorrectly replaced. Replace only with the same or equivalent type.
- To achieve the specific IP rating, the charging slot cover must be closed.
- Disposal of a battery into fire or a hot oven, or mechanically crushing or cutting a battery, can result in an explosion.
- Leaving a battery in an extremely high temperature surrounding environment can result in an explosion or the leakage of flammable liquid or gas.
- A battery subjected to extremely low air pressure may result in an explosion or the leakage of flammable liquid or gas.
- Replacement of a battery with an incorrect type risks severely damaging the headphones and the battery (for example, in the case of some lithium battery types).
- If the headset is not used for a long time, the rechargeable battery will begin to lose its charge. To avoid this loss, please fully charge the battery at least once every three months.
- To avoid risk of fire, the equipment is supplied only by external power source which output shall comply with PS1 (with output capacity less than 15W).

2 Your True wireless earpieces

Congratulations on your purchase, and welcome to Philips! To fully benefit from the support that Philips offers, register your product at www.philips.com/support. With these Philips True wireless earpieces you can:

- Enjoy convenient wireless handsfree calls
- Enjoy and control music wirelessly
- Switch between calls and music
- Enjoy noise cancellation



Quick start guide

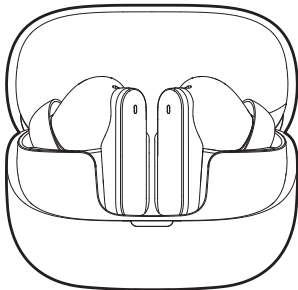


Global Warranty



Safety leaflet

What's in the box



Philips True wireless earpieces
Philips TAT3000

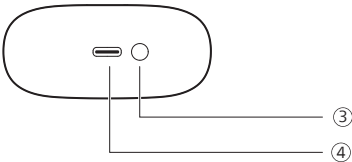
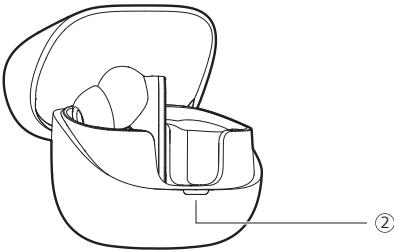
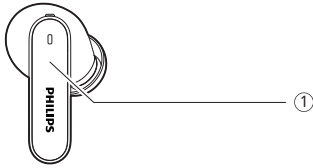


Eartips x 3 pairs

Other devices

A mobile phone or device (e.g. notebook, tablet, Bluetooth adapters, MP3 players etc) which supports Bluetooth and is compatible with the earpieces.

Overview of your True wireless earpieces



- ① Multi-function touch (MFT)
- ② LED indicator
- ③ Bluetooth pair button / Reset button
- ④ USB-C charging slot

3 Get started

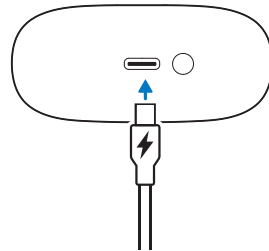
Charge the battery

Note

- Before you use your headphones, place them in the charging box and charge the battery for 2 hours for optimum battery capacity and lifetime.
- Finish your call before charging. Connecting the earpieces to charge will power them off.
 - If the headset is not used for a long time, the rechargeable battery will begin to lose its charge. To avoid this loss, please fully charge the battery at least once every three months.

Charging Box

Plug one end of the USB-C cable into the charging box and the other end into the power source.



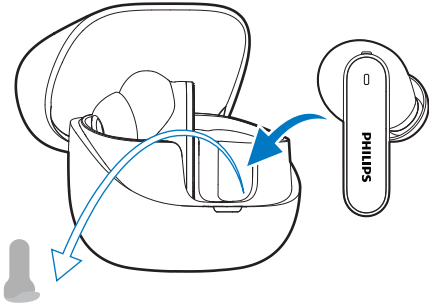
Tip

- The charging box serves as a portable backup battery for charging the earpieces. When the charging box is fully charged, it will fully recharge the earpieces 3 times.

Earpieces

Take out insulating films under earpieces and place earpieces back to charging case.

- The LED indicator on the charging case blinks white.
- Close the charging case lid, the charging case starts charging the earpieces.



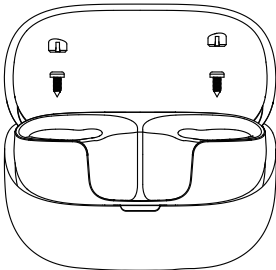
Tip

- Normally, a full charge takes 2 hours (for the earpieces or charging box) by USB cable.

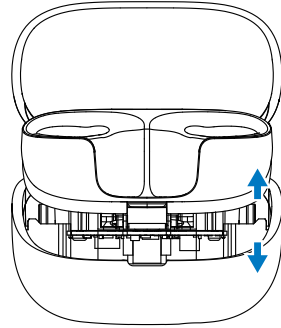
Change the battery

Battery is replaceable. Follow the steps below to change the battery.

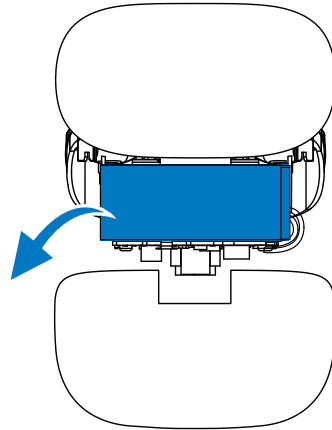
1. Use a properly tool to take out screw cover inside the charging compartment (beneath the earpieces), then use cross screwdriver to take out screw.



2. After remove screws, separate bottom cover from the case via a dedicated pry tool or a properly tool.



3. Detach the battery connector, then take it out and replace it with a new one.



How to wear

Select suitable ear tips for optimum fit

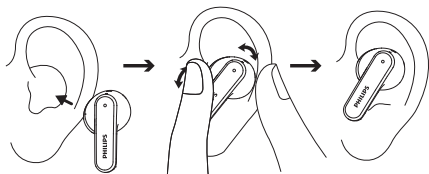
A tight, secure fit will provide the best sound quality and noise-cancellation.

- 1 Test which ear tips provide you with the best sound and wearing comfort.
- 2 3 sizes of silicone ear tips are provided : large, medium, small.



Insert the earpieces

- 1 Check left or right orientation of the earpieces.
- 2 Insert the earpieces into the ears and twist slightly until a secure fit is achieved.



App download

Scan the QR code/press 'Download' button or search 'Philips Headphones' in the Apple App Store or Google Play to download the app.

Get Connected



philips.to/headapp

The Philips Headphones App puts you in charge of the music you are listening to. You can customize the sound so that your music and calling experience always best suit your needs.

Pair the earpieces with your Bluetooth device for the first time

- 1 Make sure that the earpieces are fully charged and powered off.
- 2 Open the cover of the charging case. Take the earpieces out. The earpieces are now in pairing mode and are ready to pair with a Bluetooth device (e.g. a mobile phone).
- 3 Turn on the Bluetooth function of your Bluetooth device.
- 4 Pair the earpieces with your Bluetooth device, refer to the user manual of your Bluetooth device.

Note

- After powering on, if the earpieces can not find any previously connected Bluetooth device, please put them into pairing mode (press button on box for 3 seconds with both earpieces inside and the cover open).
- Headphones will automatically power off after 3 minutes of Bluetooth inactivity. Actual timing may vary by usage conditions.

The following example shows you how to pair the earpieces with your Bluetooth device.

- 1 Turn on the Bluetooth function of your Bluetooth device, select **Philips TAT3000**.
- 2 Enter the earpieces' password "0000" (4 zeros) if prompted. For those devices featuring Bluetooth 3.0 or higher, there is no need to enter a password.



Philips TAT3000

Single earpiece (Mono mode)

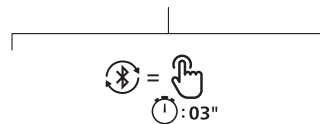
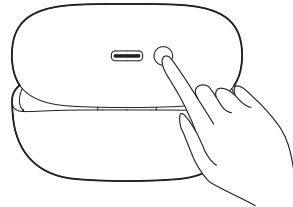
Take either right or left earpiece out from charging box for Mono use. The earpiece will power on automatically.

Note

- Take the second earpiece from the charging box and they will pair with each other automatically.

Pair the earpieces with another Bluetooth device

If you want to pair another Bluetooth device with the earpieces, just put them into pairing mode, (press button on box for 3 seconds with both earpieces inside), then discover the second device as per normal pairing.



Note

- The earpieces store 4 devices in the memory. If you try to pair more than 4 devices, the earliest paired device is replaced by the new one.

Multi-point connection

Pairing

- Pairing the headphones to 2 devices, e.g. mobile phone and notebook.

Switch between device

- At anytime, you can only listen to music from 1 device. Another device will be for phone call.
- Pause the audio from 1 device and then start to play audio from the another device.

Note

- When streaming audio from Device 1, receiving a call from Device 2 will automatically pause Device 1 playback. And the call will be routed automatically to headphones.
- Ending the call will automatically resume playback from device 1.

4 Use your earpieces

Connect the earpieces to your Bluetooth device

- 1 Turn on the Bluetooth function of your Bluetooth device.
- 2 Open the charging box cover.
 - ↳ The white LED flashes.
 - ↳ The earpieces will search the last connected Bluetooth device and reconnect to it automatically. If the last connected one is not available, the earpieces will search and reconnect to the second last connected device.

Tip

- If you turn on the Bluetooth function of your Bluetooth device after turning on the earpieces, you have to go to the Bluetooth menu of the device and connect the earpieces to the device manually.

Note

- In some Bluetooth devices, connection may not be automatic. In this case, you have to go to the Bluetooth menu of your device and connect the earpieces to the Bluetooth device manually.

Power on/off

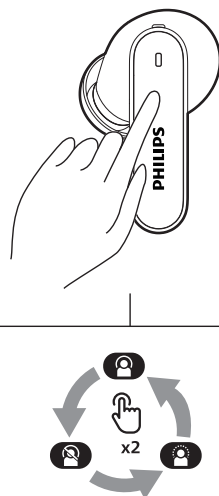
| Task | MFT | Operation |
|------------------------|-----|-------------------------------------|
| Turn the earpieces on | | Open charging box lid to power on |
| Turn the earpieces off | | Close charging box lid to power off |

Control ANC (Active Noise Cancellation)

Enable ANC

Different ANC modes can be toggled via double tapping on the left earpiece.

- ANC function is automatically activated when earpiece is placed in the ear.
- Touch the MFT twice, it will turn the ANC function off.
- Touch the MFT twice again, it will change to awareness mode.



| Task | MFT | Operation |
|-----------------|---------------|-------------------|
| ANC ON | Left earpiece | Double tap |
| ANC OFF | Left earpiece | Double tap |
| Awareness mode | Left earpiece | Double tap |
| Quick awareness | Left earpiece | Continue touching |

Manage your calls and music

Music control

| Task | MFT | Operation |
|---------------------|----------------|--------------------------|
| Play or pause music | Right earpiece | Double tap |
| Next track | Right earpiece | Triple tap |
| Previous track | Left earpiece | Triple tap |
| Adjust volume + | Right earpiece | Tap once then long touch |
| Adjust volume - | Left earpiece | Tap once then long touch |



Note

You will hear a tone that indicates when the volume has reached maximum level.

Call control

| Task | MFT | Operation |
|------------------------------|---------------------|------------|
| Pick up | Right/Left earpiece | Single tap |
| Hang up call/ Reject call | Right/Left earpiece | Double tap |

Voice Assistant

| Task | MFT | Operation |
|---------------------------------------|----------------|------------------------------|
| Trigger Voice (Siri/Google) Assistant | Right earpiece | Continue touching after beep |
| Stop Voice Assistant | Right earpiece | Single tap |

Charging box LED indicator status

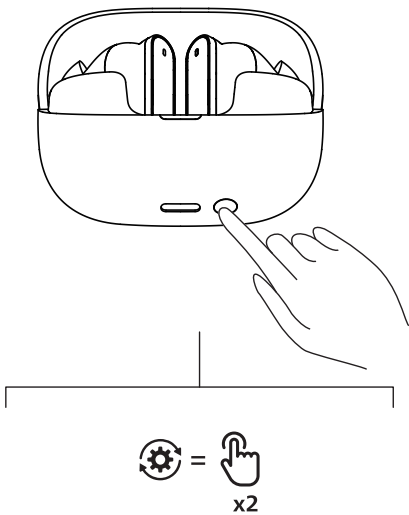
| When charging | Indicator |
|----------------------|----------------------|
| Charging in progress | White LED lights up |
| Fully charged | White LED lights off |

| In use and cover is open | Indicator |
|-----------------------------|--|
| Battery low | White LED quickly flashes for 4 cycles |
| Relatively adequate battery | White LED lights up for 5 seconds |

5 Reset the earpieces

If you encounter any pairing or connection issue, you can follow the following procedure to reset your earpieces to factory default settings.

1. On your Bluetooth device, go to the Bluetooth menu and remove **Philips TAT3000** from the device list.
2. Turn off the Bluetooth function of your Bluetooth device.
3. Return earpieces to charging box and open the lid.
4. Press reset button on box twice.
5. Follow steps in "Use your earpieces- connect the earpieces to your Bluetooth device."
6. Pair the earpieces with your Bluetooth device, select **Philips TAT3000**.



6 Technical data

- Music play time :
ANC ON: 8 + 24 hours
ANC OFF: 12 + 36 hours
- Charging time: 2 hours
- Lithium-ion battery 60 mAh on each earpiece, Lithium-ion battery 600 mAh on charging box
- Bluetooth version: 6.0
- Compatible Bluetooth profiles:
 - HFP (Hands-Free Profile)
 - A2DP (Advanced Audio Distribution Profile)
 - AVRCP (Audio Video Remote Control Profile)
- Supported audio codecs: LC3, SBC
- Frequency range: 2.4-2.4835 GHz
- Transmitter power: < 13 dBm
- Operating range: Up to 10 meters (33 feet)
- USB-C port for charging
- Low battery warning: available
- Fast charging time: 10 mins charging gives 2 hour playing

Note

- Specifications are subject to change without notice.

7 Notice

Declaration of conformity

Hereby, TP Vision Europe B.V. declares that the product is in compliance with the essential requirements and other relevant provisions of RED Directive 2014/53/EU and UK Radio Equipment Regulations SI 2017 No 1206. You can find the Declaration of Conformity on www.philips.com/support.

Disposal of your old product and battery



Your product is designed and manufactured with high quality materials and components which can be recycled and reused.



This symbol on a product means that the product is covered by European Directive 2012/19/EU.

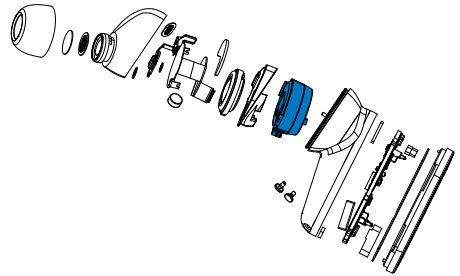


This symbol means that the product contains batteries covered by European Regulation (EU) 2023/1542 which cannot be disposed of with normal household waste. Inform yourself about the local separate collection system for electrical and electronic products and batteries. Follow local rules and never dispose of the product and batteries with normal household waste. Correct disposal of old products and batteries helps prevent negative consequences for the environment and human health.

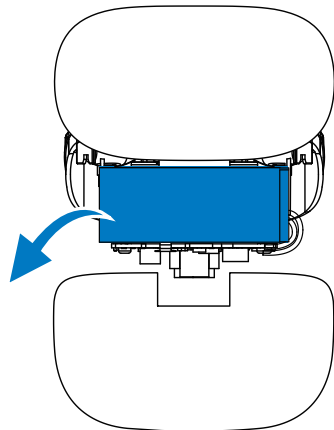
Remove the integrated battery

If there is no collection/recycling system for electronic products in your country, you can protect the environment by removing and recycling the battery before disposing of the earpieces.

- Make sure the earpieces are disconnected from the charging box before removing the battery.



- Make sure the charging box is disconnected from the USB charging cable before removing the battery.



Environmental information

All unnecessary packaging has been omitted. Your system consists of materials which can be recycled and reused if disassembled by a specialized company. Please observe the local regulations regarding the disposal of packaging materials, exhausted batteries and old equipment.

Notice of compliance

The device complies with the FCC rules, Part 15. Operation is subject to the following two conditions:

- 1. This device may not cause harmful interference, and**
- 2. This device must accept any interference received, including interference that may cause undesired operation.**

FCC rules

This equipment has been tested and found to comply with the limits for a Class B digital device, pursuant to part 15 of the FCC Rules. These limits are designed to provide reasonable protection against harmful interference in a residential installation. This equipment generates, uses and can radiate radio frequency energy and, if not installed and used in accordance with the instruction manual, may cause harmful interference to radio communications. However, there is no guarantee that interference will not occur in a particular installation. If this equipment does cause harmful interference to radio or television reception, which can be determined by turning the equipment off and on, the user is encouraged to try to correct the interference by one or more of the following measures:

- Reorient or relocate the receiving antenna
- Increase the separation between equipment and receiver
- Connect the equipment into an outlet on a circuit different from that to which the receiver is connected
- Consult the dealer or an experienced radio/TV technician for help

FCC Radiation Exposure Statement:

This equipment complies with FCC radiation exposure limits set forth for an uncontrolled environment.

This transmitter must not be co-located or operating in conjunction with any other antenna or transmitter.

Caution: The user is cautioned that changes or modifications not expressly approved by the party responsible for compliance could void the user's authority to operate the equipment.

Canada:

This device contains licence-exempt transmitter(s)/receiver(s) that comply with Innovation, Science and Economic Development Canada's licence-exempt RSS(s). Operation is subject to the following two conditions: (1) this device may not cause harmful interference, and (2) This device must accept any interference received, including interference that may cause undesired operation of the device.
CAN ICES (B)/NMB (B)

IC Radiation Exposure Statement:

This equipment complies with Canada radiation exposure limits set forth for uncontrolled environments.

This transmitter must not be co-located or operating in conjunction with any other antenna or transmitter.

Avis de conformité

Cet appareil satisfait aux règlements de la FCC partie 15 du Code of Federal Regulations. Son fonctionnement est assujéti aux deux conditions suivantes :

- 1. Cet appareil ne doit pas causer d'interférence préjudiciable et**
- 2. l'appareil doit accepter toute interférence reçue, y compris les interférences qui peuvent causer un fonctionnement non désiré.**

Règlement de la FCC

Cet équipement a été testé et jugé compatible avec les limites s'appliquant aux appareils numériques de la classe B, conformément à l'article 15 du règlement de la FCC. Ces limites ont été définies pour fournir une protection raisonnable contre les interférences nuisibles dans le cadre d'une installation résidentielle. Cet équipement génère, utilise et peut émettre de l'énergie radiofréquence et, s'il n'est pas installé ni utilisé conformément aux instructions, peut causer des interférences gênantes pour les communications radio.

Rien ne garantit toutefois que des interférences ne surviendront pas dans une installation particulière. Si cet équipement cause des interférences nuisibles pour la réception de la radio ou de la télévision, ce qui peut être déterminé en mettant l'équipement hors tension puis sous tension, l'utilisateur devra essayer de corriger ces interférences en effectuant une ou plusieurs des opérations suivantes :

- Déplacez l'antenne de réception.
- Augmentez la distance entre l'équipement et le récepteur.
- Branchez l'équipement à une prise d'un circuit autre que celui sur lequel le récepteur est branché.
- Consultez le détaillant ou un technicien de radiotélévision expérimenté.

Canada :

Le présent appareil est conforme aux CNR d'Industrie Canada applicables aux appareils radio exempts de licence. L'exploitation est autorisée aux deux conditions suivantes : (1) l'appareil ne doit pas produire de brouillage, et (2) l'utilisateur de l'appareil doit accepter tout brouillage radioélectrique subi, même si le brouillage est susceptible d'en compromettre le fonctionnement.

CAN ICES (B)/NMB (B)

Déclaration d'IC sur l'exposition aux radiations: Cet équipement est conforme aux limites d'exposition aux radiations définies par le Canada pour des environnements non contrôlés. Cet émetteur ne doit pas être installé au même endroit ni utilisé avec une autre antenne ou un autre émetteur.

8 Frequently asked questions

My Bluetooth earpieces do not turn on.

The battery level is low. Charge the earpieces.

I cannot pair my Bluetooth earpieces with my Bluetooth device.

The Bluetooth is disabled. Enable the Bluetooth feature on your Bluetooth device and turn on the Bluetooth device before you turn on the earpieces.

Pairing does not work.

- Put both earpieces into charging box.
- Make sure you have disabled the Bluetooth function of any previously connected Bluetooth devices.
- On your Bluetooth device, delete "Philips TAT3000" from the Bluetooth list.
- Pair your earpieces (see 'Pair the earpieces with your Bluetooth device for the first time' on page 6).

The Bluetooth device cannot find the earpieces.

- The earpieces may be connected to a previously paired device. Turn off the connected device or move it out of range.
- Pairing may have been reset or the earpieces have been previously paired with another device. Pair the earpieces with the Bluetooth device again as described in the user manual. (see 'Pair the earpieces with your another Bluetooth device' on page 7).

My Bluetooth earpieces are connected to a Bluetooth stereo-enabled mobile phone, but music only plays on the mobile phone speaker.

Refer to the user manual of your mobile phone. Select to listen to music through the earpieces.

The audio quality is poor and a crackling noise can be heard.

- The Bluetooth device is out of range. Reduce the distance between your earpieces and Bluetooth device, or remove obstacles between them.
- Charge your earpieces.

The audio quality is poor when streaming from a mobile phone is very slow or streaming does not work at all.

Make sure your mobile phone not only supports (mono) HFP but also supports A2DP and is BT4.0x (or higher) compatible (see 'Technical data' on page 10).

Clean your headphones regularly.

- Use a clean, damp cloth to clean your headphones - especially the sound conduits and the microphone holes - regularly and avoid buildup of substances such as sweat or earwax.
- If any sweat or water droplets are left in the sound conduits, air holes or microphone holes, the sound level will temporarily drop or cut out entirely. This is not a malfunction. Use a soft, damp cloth to dry the headphones thoroughly. Alternatively, remove the earbud tips, turn the sound conduits downward and gently tap the headphones about 5 times on a dry cloth or similar to remove any water collected inside.
- Be sure the headphones are completely dry before charging and using. Avoid using disposable alcohol pads or other substances for cleaning.

Charge your headphones regularly.

If the headphones are not used for a long time, the rechargeable battery will begin to lose its charge. To avoid this loss, please fully charge the battery at least once every three months.

9 Trademarks

Bluetooth

The Bluetooth® word mark and logos are registered trademarks owned by Bluetooth SIG, Inc. The Auracast™ word mark and logos are trademarks owned by Bluetooth SIG, Inc. Any use of such marks by MMD Hong Kong Holding Limited is under license. Other trademarks and trade names are those of their respective owners.

Google

Google and Google Play are trademarks of Google LLC.



MMD Hong Kong Holding Limited. All rights reserved. Specifications are subject to change without notice. Philips and the Philips Shield Emblem are registered trademarks of Koninklijke Philips N.V. and are used under license. This product has been manufactured by and is sold under the responsibility of MMD Hong Kong Holding Limited or one of its affiliates, and MMD Hong Kong Holding Limited is the warrantor in relation to this product. All other company and product names may be trademarks of its respective companies with which they are associated.

