

English

## Important safety information

Only use the product for its intended household purpose. Read this important information carefully (Fig. 1) before you use the product and its batteries and accessories, and save it for future reference. Misuse can lead to hazards or serious injuries. The accessories supplied may vary for different products.

## Warning

- To charge the product, only use a certified safety extra low voltage (SELV) supply unit with output rating 5 V,  $\geq 1$  A. For safe charging in a moist environment (e.g. in a bathroom), only use an IPX4 (splash-proof) supply unit. A suitable supply unit (e.g. Philips HQ87) is available via [www.philips.com/support](http://www.philips.com/support). If you need support finding the correct USB supply unit, contact the Consumer Care Center in your country (see the international warranty leaflet for contact details). Using a non-certified supply unit may cause hazards or serious injuries.
- Keep the USB cable and the USB supply unit dry (Fig. 2).
- This shaver is waterproof (Fig. 3). It is suitable for use in the bath or shower and for cleaning under the tap. For safety reasons, the shaver can therefore only be used without cord.
- This appliance can be used by children aged from 8 years and above and persons with reduced physical, sensory or mental capabilities or lack of experience and knowledge if they have been given supervision or instruction concerning use of the appliance in a safe way and understand the hazards involved. Children shall not play with the appliance. Cleaning and user maintenance shall not be made by children without supervision.
- Do not modify the supply unit.
- Do not use the supply unit in or near wall sockets that contain an electric air freshener to prevent irreparable damage to the supply unit.
- Do not use a damaged appliance. Replace damaged parts with new Philips parts.
- Because of hygiene, only one person should use the appliance.
- Unplug the appliance before cleaning it with water.

- Only use cold or lukewarm water to clean the appliance.
- Never use compressed air, scouring pads, abrasive cleaning agents or aggressive liquids to clean the appliance.
- Water may drip from the socket at the bottom of the shaver when you rinse it. This is normal and not dangerous because all electronics are enclosed in a sealed power unit inside the shaver.
- Only use original Philips accessories or consumables.
- Charge, use and store the product at a temperature between 10 °C and 35 °C.
- Keep product and batteries away from fire and do not expose them to direct sunlight or high temperatures.
- If the product becomes abnormally hot or smelly, changes color or if charging takes longer than usual, stop using and charging the product and contact Philips.
- Do not place products and their batteries in microwave ovens or on induction cookers.
- Do not open, modify, pierce, damage or dismantle the product or battery to prevent batteries from heating up or releasing toxic or hazardous substances. Do not short-circuit, overcharge or reverse charge batteries.
- If batteries are damaged or leaking, avoid contact with the skin or eyes. If this occurs, immediately rinse well with water and seek medical care.

## Electromagnetic fields (EMF)

This Philips appliance complies with all applicable standards and regulations regarding exposure to electromagnetic fields.

## Support

For all product support, please visit [www.philips.com/support](http://www.philips.com/support).

## Troubleshooting

This chapter summarizes the most common problems you could encounter with the appliance. If you are unable to solve the problem with the information below, visit [www.philips.com/support](http://www.philips.com/support) for a list of frequently asked questions or contact the Consumer Care Center in your country.

Problem	Possible cause	Solution
The appliance does not work when I press the on/off button.	The appliance is still connected to a power source. For safety reasons, the appliance can only be used without cord.	Unplug the appliance and press the on/off button to switch on the appliance.

Problem	Possible cause	Solution
	The rechargeable battery is empty.	Recharge the battery.
	The travel lock is activated.	Press the on/off button for 3 seconds to deactivate the travel lock.
	The shaving unit is soiled or damaged to such an extent that the motor cannot run.	Clean the shaving heads thoroughly or replace them.
The appliance does not shave as well as it used to.	The shaving heads are damaged or worn.	Replace the shaving heads.
	Hairs or dirt obstruct the shaving heads.	Clean the shaving heads thoroughly.
Water is leaking from the bottom of the appliance.	During cleaning, water may collect between the inner body and the outer shell of the appliance.	This is normal and not dangerous because all electronics are enclosed in a sealed power unit inside the appliance.
The battery indicator lights up orange continuously during charging.	The temperature of the shaver is outside the operating range (10 °C – 35 °C), which prevents it from charging.	Unplug the shaver and let it adjust to a temperature within the operating range. Then plug in the shaver again to charge it.

## Recycling

- This symbol means that electrical products and batteries shall not be disposed of with normal household waste (Fig. 4).
- Follow your country's rules for the separate collection of electrical products and batteries.

## Removal of built-in rechargeable battery

The built-in rechargeable battery must only be removed by a qualified professional when the appliance is discarded. Before removing the battery, make sure that the appliance is disconnected from the wall socket and that the battery is completely empty.

**Take any necessary safety precautions when you handle tools to open the appliance and when you dispose of the rechargeable battery.**

**When you handle batteries, make sure that your hands, the product and the batteries are dry.**

**To avoid accidental short-circuiting of batteries after removal, do not let battery terminals come into contact with metal objects (e.g. coins, hairpins, rings). Do not wrap batteries in aluminum foil. Tape battery terminals or put batteries in a plastic bag before you discard them.**

**Be careful, the battery strips are sharp.**

**Do not connect the shaver to the mains again after the rechargeable battery has been removed.**

- 1 Remove the shaving unit from the shaver.
- 2 Insert a flathead screwdriver between the plastic bottom of the shaver and the socket for the plug. Pry the bottom off the shaver.
- 3 Use a screwdriver to remove the screws.
- 4 Insert a flathead screwdriver into the slot in the bottom of the shaver, and push the power unit out of the housing.
- 5 Cut the battery strips with a pair of cutting pliers, and remove the battery.

繁體中文

## 重要安全資訊

請將本產品僅用於預定的家庭用途。使用本產品及其電池與配件之前，請先仔細閱讀此重要資訊 (圖 1)，並保留說明以供日後參考。不當使用可能導致危險或嚴重受傷。提供的配件可能隨產品而異。

## 警示

- 要為產品充電，請僅使用輸出額定值為 5V、 $\geq 1$ A 的 IPX4 (防濺) 電源裝置。我們建議使用飛利浦 HQ87 或經過認證的等效電源裝置。HQ87 可在 [www.philips.com/parts-and-accessories](http://www.philips.com/parts-and-accessories) 或您所在國家/地區的消費者服務中心單獨獲得 (有關聯繫方式，請參閱國際保修手冊)。如果您在尋找正確的 USB 電源供應裝置時需要協助，請聯絡您所在國家/地區的客戶服務中心 (詳細聯絡資料請參閱全球保固說明書)。使用未經認證的電源裝置可能會導致危險或嚴重傷害。
- 請保持 USB 電纜和 USB 電源裝置乾燥 (圖 2)。
- 此符號表示：禁止於自來水下清潔 (圖 2)。
- 此電鬚刀防水 (圖 3)。適合在泡澡或淋浴時使用，並可在水龍頭下清潔。因此為了安全起見，此電鬚刀只能以無線方式操作。
- 此符號表示：可於淋浴期間使用 (圖 3)。可以在浴缸、淋浴間或其他裝水容器附近使用本產品。

- 本產品可供 8 歲以上兒童、身體官能或心智能力退化者，或是經驗與使用知識缺乏者使用，但需有人從旁監督或指示如何安全使用本產品，且使用者需了解使用本產品的潛在危險。請勿讓小孩把玩本產品。若無人監督，請勿讓兒童進行清潔和使用。
- 請勿修改電源供應裝置。
- 請勿在插入電子空氣清淨機的牆壁插座內或附近使用電源供應裝置，以免電源供應裝置發生無法修復的損壞。
- 請勿使用損壞產品。請用全新飛利浦零件更換損壞的零件。
- 基於衛生考量，本產品限由一人使用。
- 在進行清水清潔之前，請先拔掉電源插頭。
- 本產品清潔時只能使用冷水或常溫的水。
- 絕對不可使用壓縮空氣、鋼絲絨、磨蝕性的清潔劑或侵蝕性的液體清潔本產品。
- 在您沖洗時，電鬚刀底部的插孔可能會滴水。此為正常現象，並不會造成危險，因為所有的電子零件都密封於電鬚刀內的供電裝置中。
- 僅能搭配飛利浦原裝零件或消耗零件使用。
- 請於室溫 10 ° C 到 35 ° C 間充電、使用並存放本產品。
- 本產品和電池應放置遠離火源位置，且不要暴露在直射陽光或高溫下。
- 如果產品異常發熱或散發異味、變色或充電時間比平時長，請停止使用產品或為其充電，並與飛利浦聯絡。
- 請勿將產品及其電池放進微波爐或放到電磁爐上。
- 請勿打開、改裝、刺穿、損壞或拆解本產品或電池，以防止電池升溫或釋放有毒或有害物質。請避免讓電池發生短路、過度充電或反向充電。
- 如果電池損壞或滲液，請避免電池接觸到皮膚或眼睛。如果不慎接觸到皮膚或眼睛，請立即用水沖洗乾淨並就醫。

## 電磁波 (EMF)

本 Philips 產品符合所有電磁場暴露的相關適用標準和法規。

## 支援

如需所有產品支援，請造訪 [www.philips.com/support](http://www.philips.com/support)。

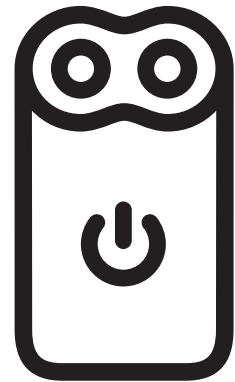
## 疑難排解

本章概述了使用本產品最常遇到的問題。如果無法利用以下資訊解決遇到的問題，請造訪 [www.philips.com/support](http://www.philips.com/support) 瀏覽常見問題清單，或聯絡您所在國家/地區的飛利浦客戶服務中心。

問題	可能原因	解決方法
我按下開關按鈕時，產品沒有反應。	產品仍連接到電源。因此為了安全起見，此產品只能以無線方式操作。	拔掉產品插頭，並按下開關按鈕，開啟產品電源。
	充電式電池沒電。	將電池重新充電。

PHILIPS

PQ888  
PQ889



3000.085.9481.3 (19/11/2025)  
保留所有權利  
All rights reserved  
© 2025 Koninklijke Philips N.V.



問題	可能原因	解決方法
	旅行鎖定已啟動。	按下開關按鈕 3 秒鐘，即可解除旅行鎖。
	電鬚刀組已經髒污或損壞到馬達無法轉動的程度。	徹底清潔電鬚刀刀頭或更換刀頭。
產品的刮鬚效果不如往常。	電鬚刀刀頭毀壞或磨損。	更換刀頭。
	毛髮或灰塵阻塞電鬚刀刀頭。	徹底清潔刀頭。
產品底部漏水。	清潔時，水可能會積聚在產品的內部機體和外部機殼之間。	此乃正常現象，並不會造成危險，因為所有的電子零件都密封於產品內的供電裝置中。
充電時橙色指示燈常亮。	電鬚刀溫度超出正常使用溫度範圍 (10°C - 35°C)，機器保護，停止充電。	拔下充電線，待電鬚刀處於正常溫度環境，再插電對其充電。

## 回收

- 此符號表示電子產品及電池，不得與一般家用廢棄物一併丟棄(圖 4)。
- 請按照您所在國家/地區的規定，分類與回收電子產品與電池。

## 取出內建充電式電池

丟棄本產品時，僅能由合格的專業人員取出內建充電式電池。在取出電池前，請確認已將裝置與牆上插座連線中斷，且電池電力已完全耗盡。

使用工具打開裝置或棄置充電式電池時，請採取任何必要的安全預防措施。

拿取電池時，請確保雙手、本產品和電池都處於乾燥狀態。

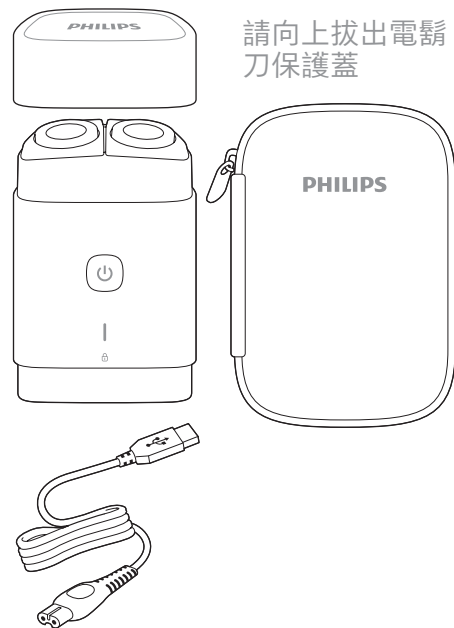
為避免電池在取出後意外發生短路，請勿讓電池端子接觸到金屬物體(例如硬幣、髮夾、戒指)。請勿以鋁箔紙包裹電池。丟棄電池之前，請用膠帶黏住電池端子，或將電池放進塑膠袋。

電池固定帶非常銳利，請小心。

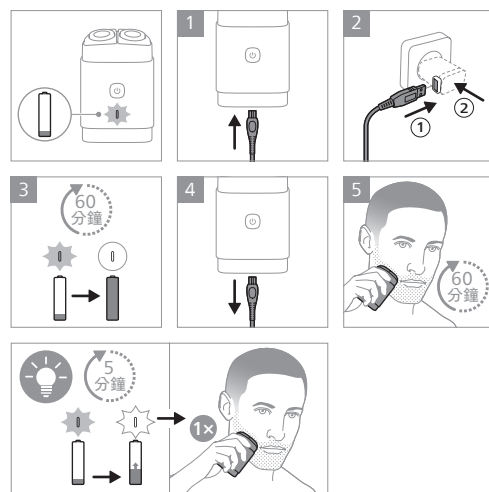
取出充電式電池後，請不要再把電鬚刀接上電源插座。

- 1 拆下電鬚刀刀頭部件。
- 2 將一字螺絲起子插入電鬚刀的塑膠底部與插頭插孔之間。然後撬開電鬚刀底部。
- 3 使用螺絲起子取下螺絲。
- 4 用一字螺絲起子拆入電鬚刀底部的插槽中，將電源部件推出電鬚刀外殼。
- 5 用鉗子剪斷電池連接片，然後拆卸電池。

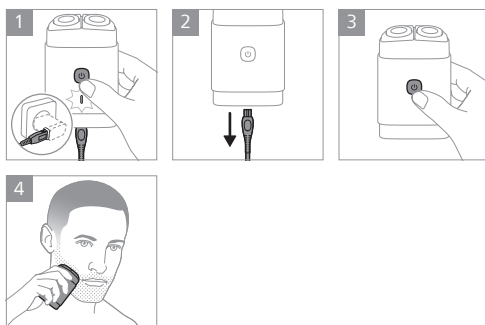
隨附的附件可能因產品而異



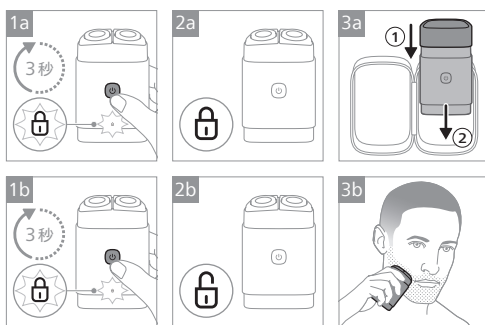
## 為電鬚刀充電



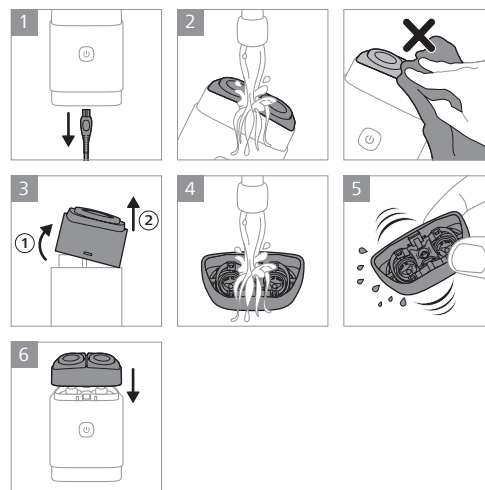
## 使用前先拔掉充電線



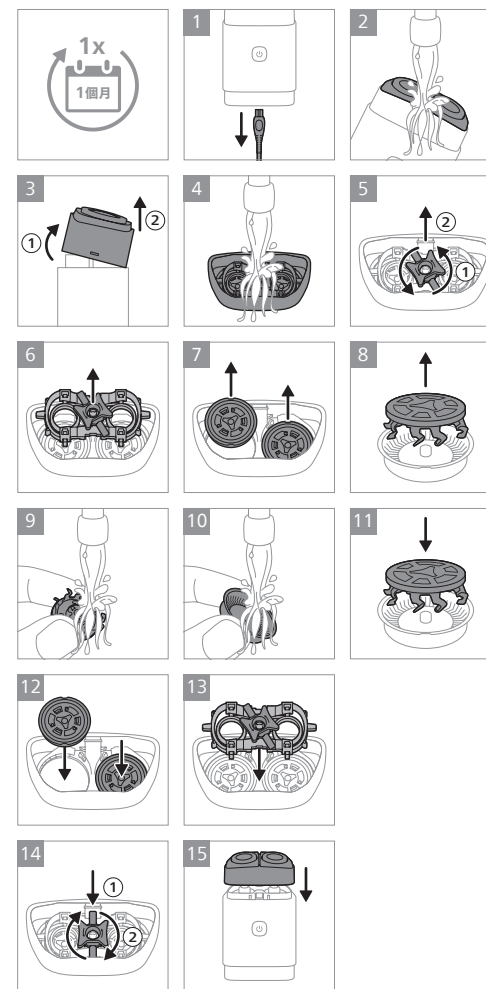
## 旅行鎖



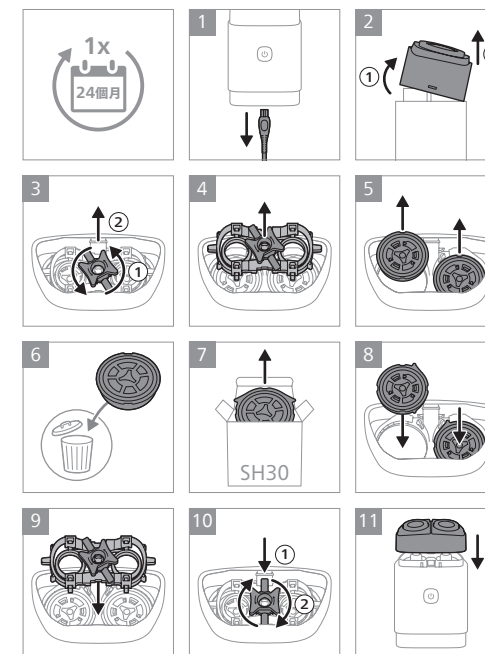
## 清潔刀頭



## 徹底清潔



## 更換刀頭



設備名稱：飛利浦電鬚刀	型號(型式)：PQ888	限用物質及其化學符號					
		鉛 (Pb)	汞 (Hg)	鎘 (Cd)	六價鉻 (Cr <sup>VI</sup> )	多溴聯苯 (PBB)	多溴二苯醚 (PBDE)
單元							
電路板		-	0	0	0	0	0
刀片		0	0	0	0	0	0
塑膠部件		0	0	0	0	0	0
內部配線		0	0	0	0	0	0
金屬部件		-	0	0	0	0	0

備考 1. "超出0.1 wt%" 及 "超出0.01 wt%" 係指限用物質之百分比含量超出百分比含量基準值。  
備考 2. "0" 係指該項限用物質之百分比含量未超出百分比含量基準值。  
備考 3. "-" 係指該項限用物質為排除項目。