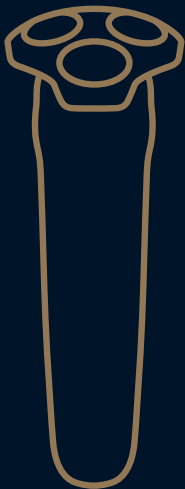


PHILIPS

Shaver
Rasoir

i9000





Initial setup
Réglage initial

5



Important to know
Important à savoir

6



Charging your shaver
Recharge de votre
rasoir

6



Dry shaving
Rasage à sec

8



Wet shaving
Rasage humide

9



Head shaving
Rasage de la tête

10



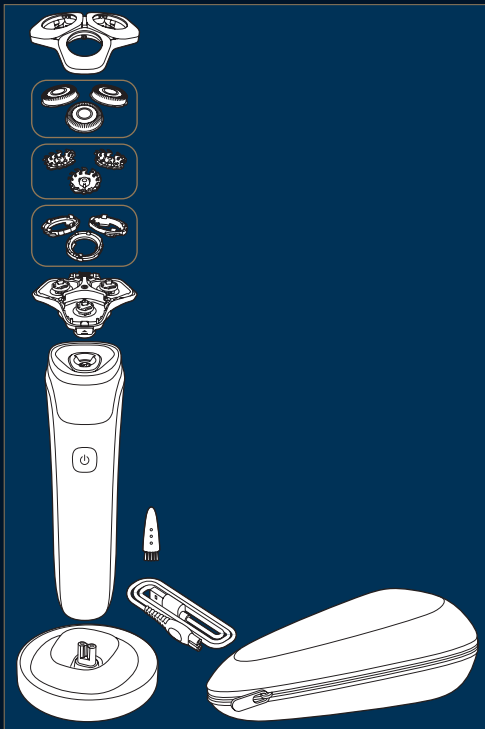
Thorough cleaning
Nettoyage en
profondeur

11



Blade replacement
(SH93)
Remplacement de
la lame (SH93)

13



GET STARTED / COMMENCEZ

www.philips.com/MyShaveri9000

The top right section features a dark blue background with white icons. On the left is a person icon with a question mark above it. In the center is a QR code. To the right of the QR code is a smartphone icon with a download arrow, and further right is a video player icon with a play button. Below these icons is the website URL.

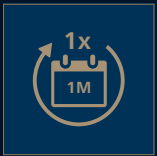
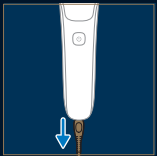
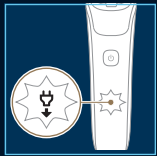
Initial setup Réglage initial

1 2 3

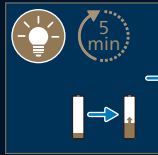
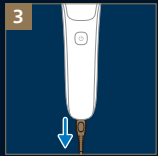
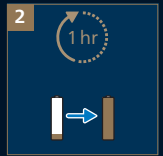
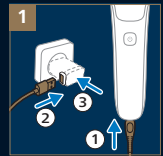
The initial setup instructions are shown in three numbered steps. Step 1 shows a smartphone displaying a QR code with a download arrow. Step 2 shows a hand inserting a small metal pin into the power button of the shaver. Step 3 shows a smartphone with a Bluetooth icon and a double-headed arrow connecting it to the shaver, indicating Bluetooth pairing.



Important to know Important à savoir



Charging your shaver Recharge de votre rasoir



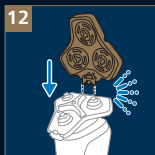
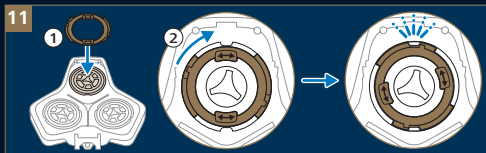


Dry shaving Rasage de la tête

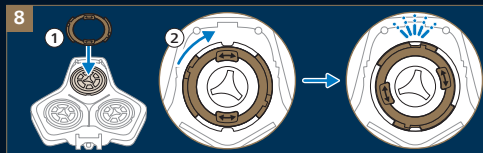
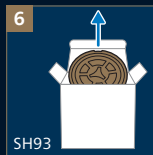
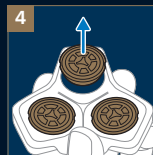
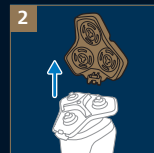
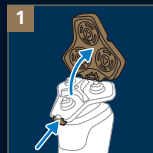
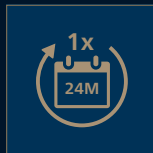


Wet shaving Rasage humide





Blade replacement (SH93) Remplacement de la lame (SH93)





© 2026 Koninklijke Philips N.V.
All rights reserved
Tous droits réservés

3000.174.0112.1