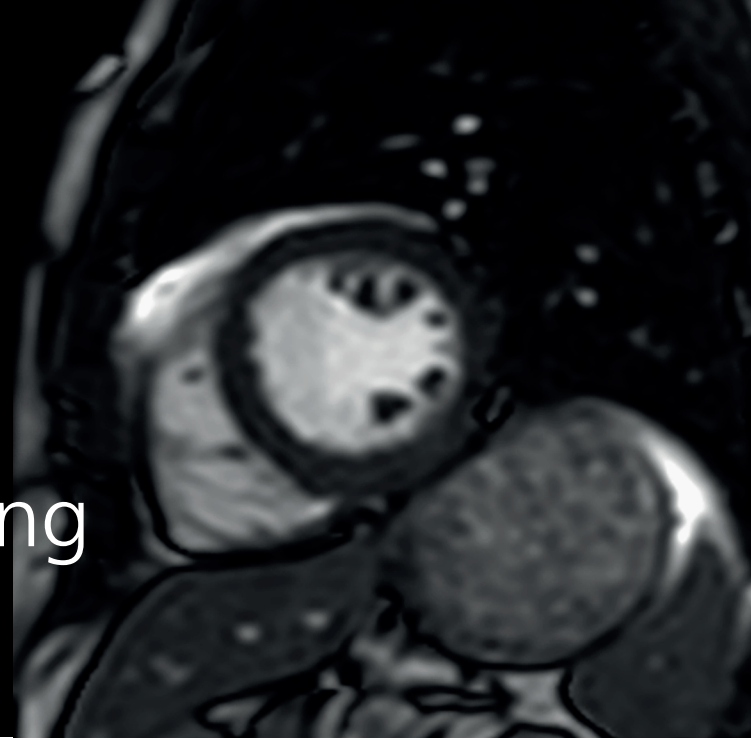


PHILIPS

Philips CINE FreeBreathing Robust free-breathing cardiac CINE MR



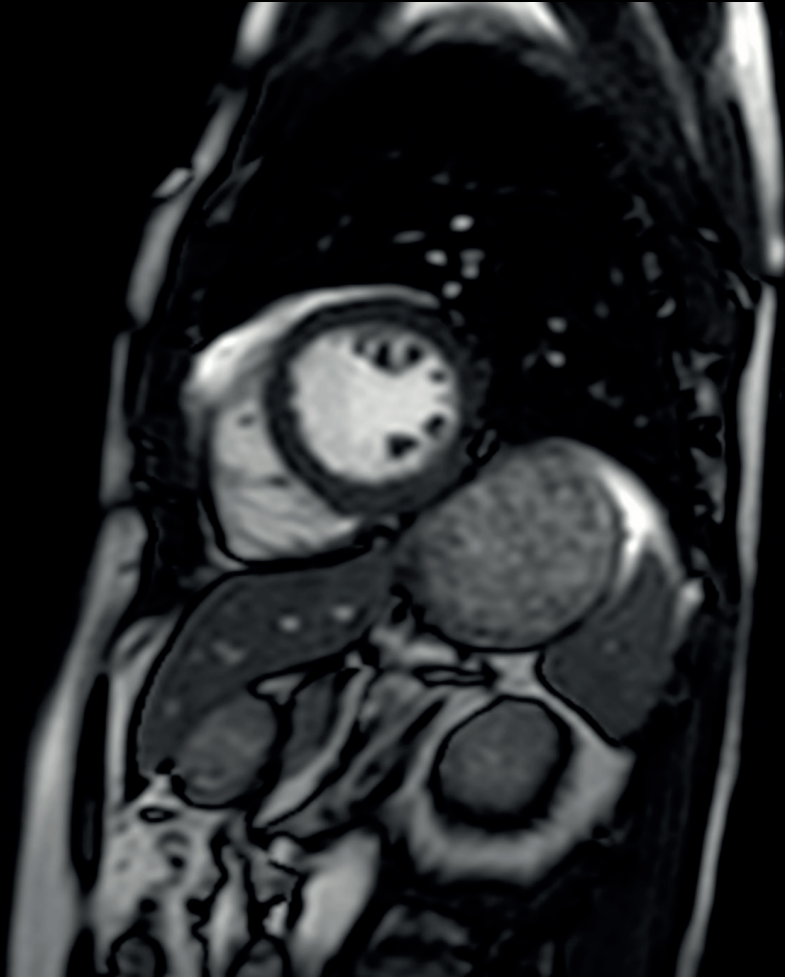
Philips CINE FreeBreathing eliminates the need for breath-holds by combining retrospective cardiac synchronization with respiratory gating. It improves image quality for patients who struggle with breath-holding while providing cardiac function measurements comparable to standard breath-hold CINE.^{1,2} The technique enables robust single-beat cardiac imaging³, allowing acquisition of a full 12-slice 2D stack covering the heart in just 90 seconds.⁴

Product benefits

- Robust free-breathing cardiac imaging
- Provides cardiac function measurements similar to breath-hold CINE¹
- <90 seconds to acquire a 2D slice stack covering the whole heart (12 slices)⁴

Field strength	1.5T and 3.0T
Main applications	Cardiac
Image types	CINE
Speed	Compatible with Compressed SENSE, SmartSpeed and Smartspeed Precise
Image quality	Improves image quality for patients that have difficulty holding their breath ⁴

Philips CINE Freebreathing



bTFE CINE FreeBreathing
2.3 x 2.8 x 8.0 mm
3.8 sec

System: Ambition X 1.5T

1. Applies to ejection fraction only.
2. For patients with difficulties in breath holding.
3. Compared to free breathing single beat without respiratory gating.
4. Not applicable when slices re-acquired due to arrhythmia rejection.

© 2026 Koninklijke Philips N.V. All rights reserved. Specifications are subject to change without notice. Trademarks are the property of Koninklijke Philips N.V. or their respective owners.

00001384-00-00 * APR 2026



How to reach us
Please visit www.philips.com/mri