

# PHILIPS



## Philips SmartHeart

# Fully automated AI-driven cardiac MR planning in <30 seconds<sup>1</sup>

Philips SmartHeart revolutionizes the CMR workflow by integrating AI to fully automate cardiac MR planning. Trained on 1200+ patient datasets<sup>2</sup>, SmartHeart delivers fully AI-enabled automated cardiac planning within 30 seconds.<sup>1</sup>

With a single click, technologists can generate all 14 basic and advanced cardiac views that are aligned with the guidelines of the European Society of Cardiology (ESC), American Heart Association (AHA) and Society for Cardiovascular Magnetic Resonance (SCMR).

### Product benefits

- 1 3D survey scan for a fully automated CMR planning
- <30 seconds to plan all 14 basic and advanced views<sup>1</sup>
- 75% breath-hold reduction for basic cardiac views
- Consistent and reliable planning across longitudinal exams
- Planning outcomes in line with guidelines (ESC, AHA, SCMR)

### Streamlined workflow with consistent planning results

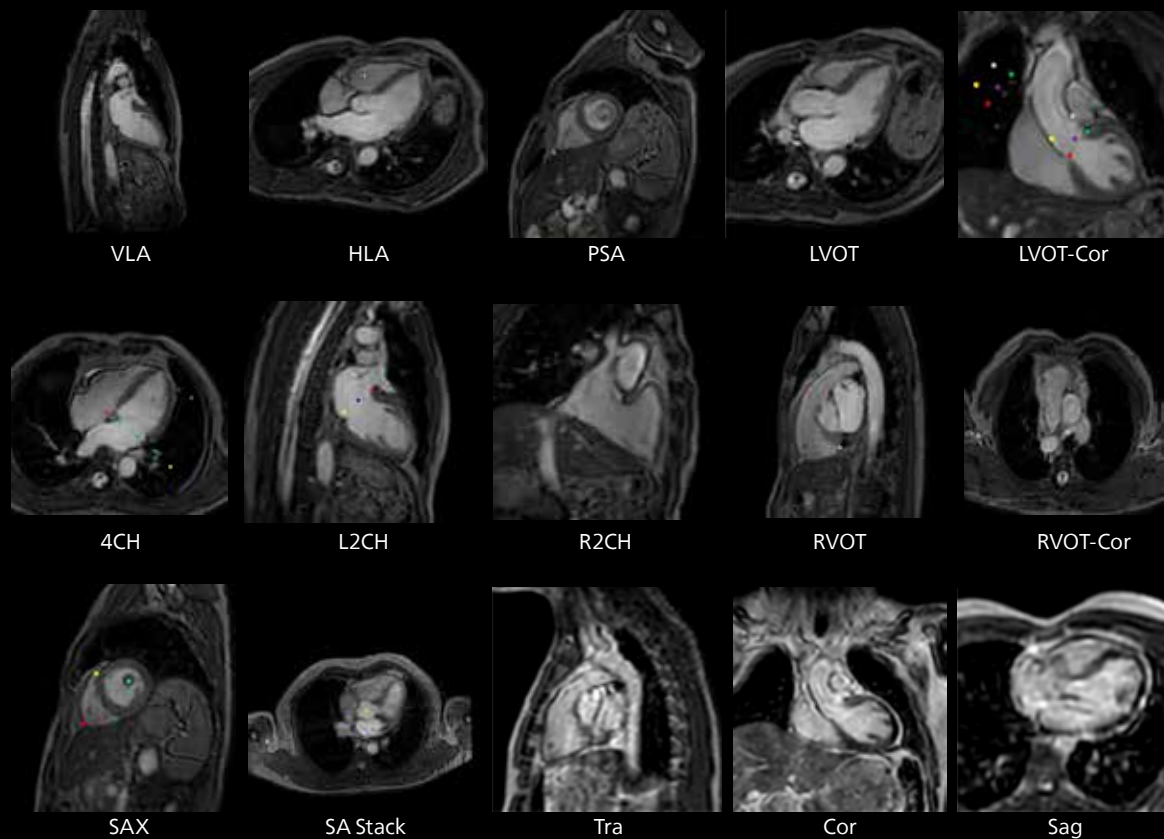
What once required multiple manual steps and expert intervention is now streamlined into a fast, repeatable workflow with consistent planning results, also for longitudinal exams. SmartHeart delivers accurate and robust planning across a wide range of patient types and supports both free-breathing and breath-hold exams.

### Customize cardiac planning settings

With SmartHeart Studio, an offline AI training tool, you can customize cardiac planning settings based on your preferences, giving you the flexibility to adjust your CMR planning and add additional views to meet your clinical needs.

<b>Field strength</b>	1.5T and 3.0T
<b>Main applications</b>	Cardiac
<b>Sequence</b>	Single 3D survey acquisition
<b>Views</b>	Vertical long axis (VLA), Horizontal long axis (HLA), Pseudo short axis (PSA), Left ventricular outflow tract (LVOT), Left ventricular outflow tract coronal (LVOT-Cor), 4 chamber (4CH), left 2 chamber (L2CH), right 2 chamber (R2CH), Right ventricular outflow tract (RVOT), Right ventricular outflow tract coronal (RVOT-Cor), Short axis (SAX), Transverse (Tra), Coronal (Cor), Sagittal (Sag)

## Philips SmartHeart



Plan all 14 standard and advanced cardiac views in <30 seconds<sup>3</sup>

1. From the end of the survey.
2. Patient data sets from Netherlands, USA and India.
3. Basic and advanced views: 14 cardiac views.

© 2026 Koninklijke Philips N.V. All rights reserved. Specifications are subject to change without notice. Trademarks are the property of Koninklijke Philips N.V. or their respective owners.

00001383-00-00 \* APR 2026



**How to reach us**  
Please visit [www.philips.com/mri](http://www.philips.com/mri)