

Philips Cardiac Motion Correction

Automated motion correction for accurate and confident cardiac MR

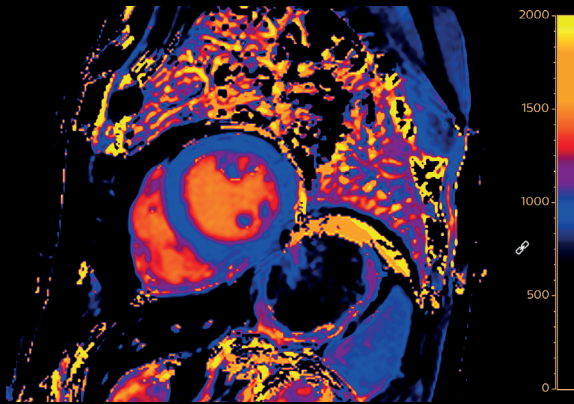
Philips Cardiac Motion Correction is an automated MR technique that uses Fast Elastic Image Registration (FEIR) to correct for both respiratory and cardiac motion.¹ It improves image quality for single-shot cardiac imaging, such as contrast dynamic perfusion, T1 mapping, and (SSh) LGE by enabling inline motion correction and correcting motion between dynamics, source images and averages.¹ For T1 mapping this results in more accurate quantitative maps, with more pixels on the T1 confidence maps, helping to improve diagnostic confidence.¹ Diagnostic-quality scans can be delivered even in patients who struggle with breath-holding.¹

Product benefits

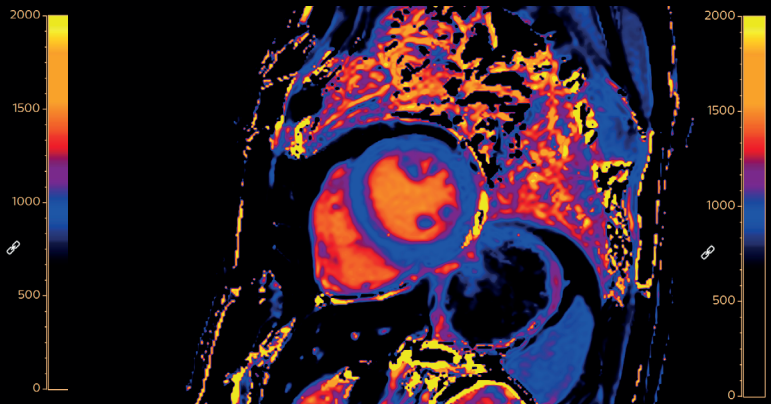
- Corrects for respiratory and cardiac motion¹
- Improves image quality for dynamic imaging, T1 mapping and LGE scans¹
- More accurate quantitative maps with more pixels on T1 confidence maps¹
- Enable diagnostic-quality scans for patients with breathhold problems¹

Field strength	1.5T and 3.0T
Main applications	Cardiac
Maps	T1 confidence maps
Image types	T1, LGE, dynamic
Speed	Compatible with Compressed SENSE SmartSpeed and Smartspeed Precise
Workflow	In-line automated motion correction
Image quality	Corrects for motion between dynamics/averages/T1 mapping source images

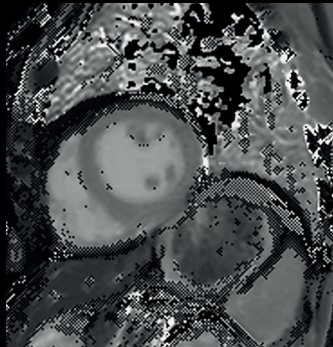
Philips Cardiac Motion Correction



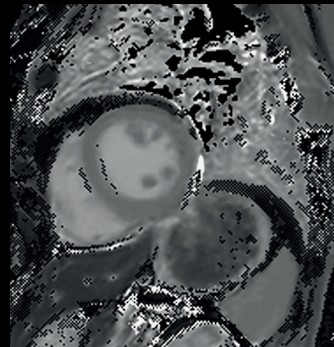
T1 **without** motion correction (MoCo)
2.0 x 2.0 x 10.0 mm
12.4 sec



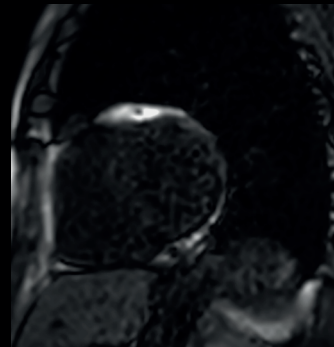
T1 **with** motion correction (MoCo)
2.0 x 2.0 x 10.0 mm
12.4 sec



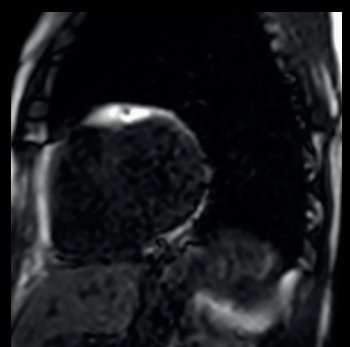
T1 confidence map **without** MoCo
2.0 x 2.0 x 10.0 mm
12.4 sec



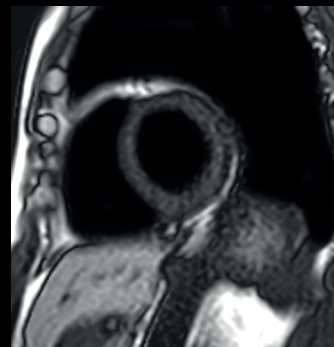
T1 confidence map **with** MoCo
2.0 x 2.0 x 10.0 mm
12.4 sec



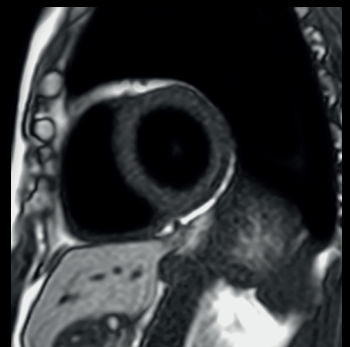
Perfusion **without** MoCo
2.5 x 2.5 x 10.0 mm
1:00 min



Perfusion **with** MoCo
2.5 x 2.5 x 10.0 mm
1:00 min



LGE IR SSh **without** MoCo
2.0 x 2.3 x 10.0
38 sec



LGE IR SSh **with** MoCo
2.0 x 2.3 x 10.0
38 sec

System: Ambition X 1.5T

1. Compared to scans without Cardiac Motion Correction.

© 2026 Koninklijke Philips N.V. All rights reserved. Specifications are subject to change without notice. Trademarks are the property of Koninklijke Philips N.V. or their respective owners.

00001386-00-00 * APR 2026



How to reach us
Please visit www.philips.com/mri