

# PHILIPS

## What's new in Elevate Plus?

Core image quality enhancements, AI and automation, and workflow improvements do even more to help you meet today's imaging challenges and elevate care.

### EPIQ Elite Elevate Plus

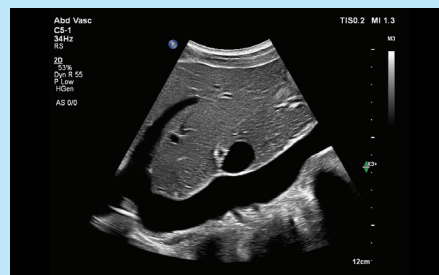
Elevate every ultrasound experience exceptionally

### Affiniti Elevate Plus

Elevate every ultrasound experience every day

### Elevate image quality

xRes Pro+ next-generation image processing on EPIQ Elite<sup>1</sup> that enhances sharpness and detail resolution to aid lesion detection and assessment



### Elevate workflow

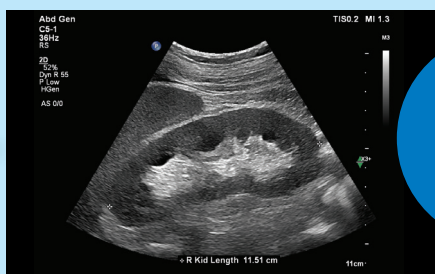
Our leading AI and automation

AI-powered Auto Measure Abdomen<sup>2</sup> for fast, consistent measurements

**>93%**  
accuracy

compared to manual  
measurements  
by clinical expert<sup>3</sup>

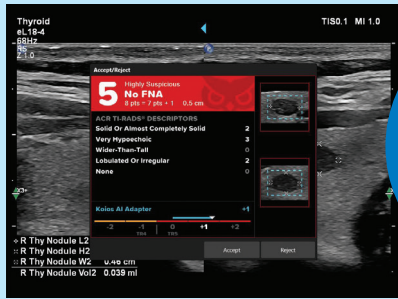
**55%**  
reduced  
measurement  
time<sup>4</sup>



EPIQ Elite Elevate Plus



Affiniti Elevate Plus



**<2 seconds**  
to interpret and  
assess malignancy risk  
with BI-RADS and  
just seconds  
with TI-RADS<sup>5,6</sup>

**Advanced 3D/4D workflow** to reduce scan time and cognitive load while increasing diagnostic confidence

**Modernized UI**  
enhances the user  
experience with  
streamlined access  
to controls



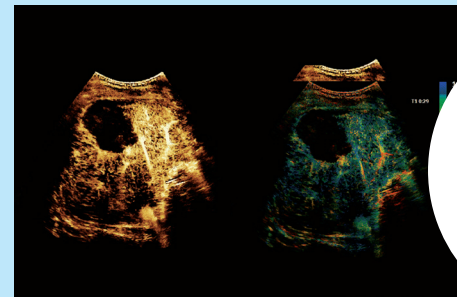
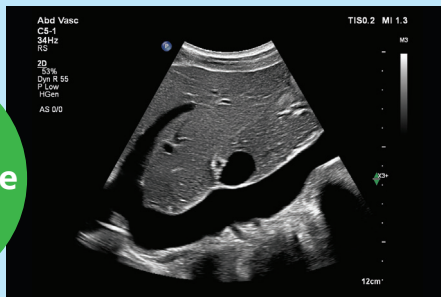
**Koios AI-based clinical decision support:** like a second opinion in just seconds for breast and thyroid on-cart or off-cart

**Philips exclusive Smart Calipers** designed for fast results off-cart

**2D Auto Cine** for effortless stable frame selection

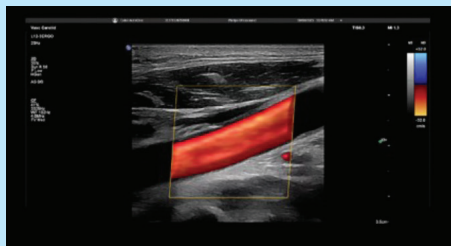
**Super Resolution MVI Pro with Time of Arrival and Time to Peak** for higher sensitivity and improved resolution in CEUS<sup>8-10</sup>

**54.4%**  
reduced time  
to select the  
best frame<sup>7</sup>



**Streamline workflow**  
with maps for  
**Time of Arrival**  
and **Time to Peak**

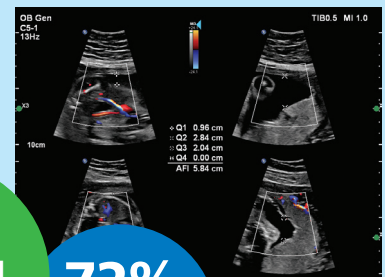
SuperRes MVI Pro Time of Arrival map



**Advanced cardiovascular capabilities**

Save time with 2D Auto LV,<sup>9</sup> CV Doppler and 2D Auto Measure, 2D Auto EF, 2D Auto EF Advanced<sup>1</sup> and 3D markers<sup>1</sup>

**Quad View/Quad View AFI** displays four images simultaneously for efficient multi-view workflows and reduces variability in AFI measurement



**54%**  
reduced  
keystrokes<sup>11</sup>

**72%**  
time  
saved<sup>11</sup>

**References**

1. Available only on EPIQ Elite.
2. Available on EPIQ Elite and Affiniti 70.
3. Internal documentation: Validation report D001785669. Obtained from a retrospective data analysis study involving data from 150 subjects (using MD.AI annotation tool, 3 clinical experts).
4. Internal documentation: Validation report D001785669. Evidence was obtained on a subset of data from 5 subjects (7 clinical experts) assessing the measurement time for saved images and not the scan time.
5. BI-RADS and TI-RADS are registered trademarks of the American College of Radiology.
6. Internal documentation: Validation report D001785669.
7. Internal documentation: Validation report D001785669. Reduction in time in abdominal scanning using Auto Cine.
8. Consult with your local sales representative regarding approved clinical indications in your region.
9. Available only on EPIQ Elite.
10. Compared to the previous version of SuperRes MVI.
11. Internal documentation: Validation report D001785669. Compared to traditional AFI workflow.

Find out more at [www.philips.com/GI](http://www.philips.com/GI)



© 2026 Koninklijke Philips N.V. All rights are reserved. Philips reserves the right to make changes in specifications and/or to discontinue any product at any time without notice or obligation and will not be liable for any consequences resulting from the use of this publication.



[www.philips.com/healthcare](http://www.philips.com/healthcare)

Printed in the Netherlands.  
00001419-00-01 \* MAR 2026