

PHILIPS

32:9 SuperWide curved
monitor with USB-C

Curved Business Monitor

5000 series

49 (48.8" / 124 cm diag.)

5120 x 1440 (Dual QHD)

49B2U5900C



Redefining workflow productivity

This 49-inch business monitor is made for efficiency. Its SuperWide screen, Smart KVM switch, and USB-C connectivity make teamwork and moving between tasks an easier feat.

Superb Picture Quality

- VA display delivers awesome images with wide viewing angles
- DisplayHDR 400 for more lifelike and outstanding visuals

Designed for the way you work

- Built-in stereo speakers for multimedia
- MultiView enables simultaneous dual connection and view
- Tilt, swivel and height-adjust for an ideal viewing position
- SoftBlue Technology: for comfortable viewing
- Eyesafe certified blue light protection and color accuracy
- 32:9 SuperWide screen designed to replace multiscreen setups
- Curved display design for more immersive experience
- Earphone Hook: for customizable storage
- SmartKVM: for easily switching between sources.

Single cable USB-C connection

- RJ-45 to USB-C gives easy network connection with security

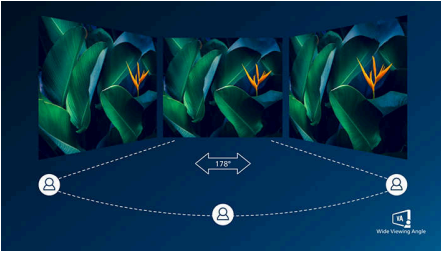
Curved Business Monitor

32:9 SuperWide curved monitor with USB-C

49B2U5900C/27

Highlights

VA display



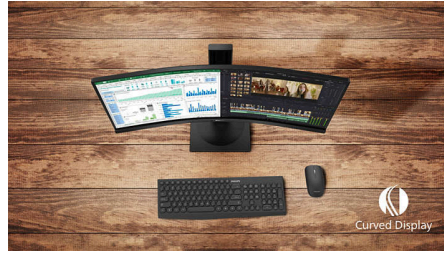
Philips VA LED display uses an advanced multi-domain vertical alignment technology which gives you super-high static contrast ratios for extra vivid and bright images. While standard office applications are handled with ease, it is especially suitable for photos, web-browsing, movies, gaming, and demanding graphical applications. Its optimized pixel management technology gives you 178/178 degree extra wide viewing angle, resulting in crisp images.

DisplayHDR 400



VESA-certified DisplayHDR 400 delivers a significant step-up from normal SDR displays. Unlike other 'HDR compatible' screens, true DisplayHDR 400 produces astonishing brightness, contrast and colors. With global dimming and minimum 400 nits brightness, images come to life with notable highlights while featuring deeper, more nuanced blacks. It renders a fuller palette of rich new colors, delivering a visual experience that engages your senses.

Curved display design



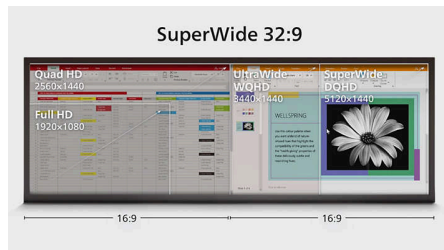
Desktop monitors offer a personal user experience, which suits a curve design very well. The curved screen provides a pleasant yet subtle immersion effect, which focuses on you at the center of your desk.

SmartKVM



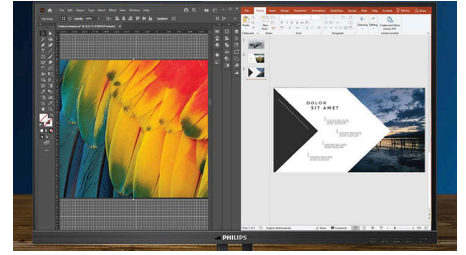
Unlike traditional built-in KVM monitor button, the smart KVM allows for switching between sources with the click of a button on your keyboard. When all devices are properly connected, users can easily switch between sources by clicking the "Ctrl" key three times.

32:9 SuperWide



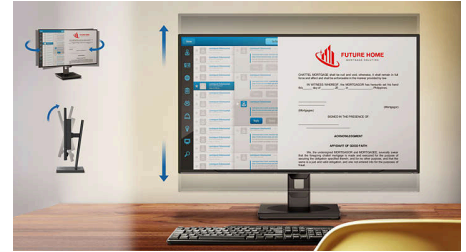
32:9 SuperWide 49" screen, with 5120 x 1440 resolution, is designed to replace multiscreen setups for massive wide view. It's like having two 27" 16:9 Quad HD displays side-by-side. SuperWide monitors offer screen area of dual monitors without the complicated setup.

MultiView technology



With the ultra-high resolution Philips MultiView display you can now experience a world of connectivity. MultiView enables active dual connect and view so that you can work with multiple devices like a PC and notebook simultaneously, for complex multi-tasking.

Compact Ergo Base



The Compact Ergo Base is a people-friendly Philips monitor base that tilts, swivels and height-adjusts so each user can position the monitor for maximum viewing comfort and efficiency.

Earphone Hook



Earphone storage is unmatched with this feature. Carefully pull down the hook located on the side of the monitor: This feature makes for a tidy desktop and provides a handy cable management solution for your workspace.



Curved Business Monitor

32:9 SuperWide curved monitor with USB-C

49B2U5900C/27

Highlights

Built-in stereo speakers



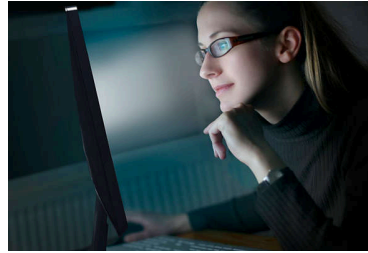
A pair of high quality stereo speakers built into a display device. It can be visible front firing, or invisible down firing, top firing, rear firing, etc depending on model and design.

eyesafe® CERTIFIED 2.0 (RPF 50)



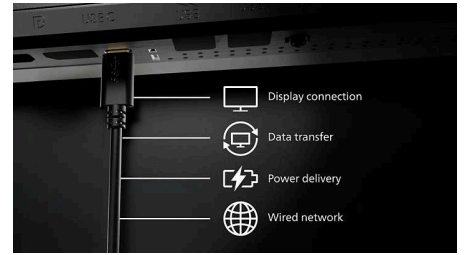
The Philips display meets the eyesafe® CERTIFIED 2.0 standard to truly protect you from the long exposure to blue light. The always-on blue light filter not only helps reduce digital eye strain, but also guarantees color integrity.

SoftBlue Technology with Low Blue Light Panel



SoftBlue technology offers increased visual comfort and protection against adverse health effects caused by prolonged exposure to blue light. With the low blue-light panel, the ratio of display emission light in the range of 415-455 nm to 400-500nm is reduced to less than 50%. As a result, the SoftBlue technology provides optimal visual comfort, minimizes eye strain, and supports sustained focus. Not to mention, SoftBlue LED technology is tested and TÜV Rheinland Low Blue Light (Hardware Solution) certified for its effectiveness in reducing blue light emissions.

USB-C Docking with RJ45



Simplify all peripherals from monitor to PC using one-cable-docking USB Type-C connector, includes networking, high resolution video output from PC to monitor, and surfing on Internet without an additional network cable, even without LAN port on your notebook. RJ45 connection through USB-C offers a fast and secure connection when needed. Getting the fastest data speeds allows you to transfer data from a HDD to your PC faster than ever. Additionally, USB-C with power delivery can even enable you to power and charge your notebook from the monitor, eliminating the need for extra power cables.



Curved Business Monitor

32:9 SuperWide curved monitor with USB-C

49B2U5900C/27

Specifications

Picture/Display

Panel Size: 48.8 inch / 124 cm
Aspect ratio: 32:9
LCD panel type: VA LCD
Backlight type: W-LED system
Pixel pitch: 0.2328 x 0.2328 mm
Brightness: 450 (SDR) cd/m², 500 (HDR) cd/m²
Display colors: 1.07B
Color gamut (typical): NTSC 97%, sRGB 119%*
Contrast ratio (typical): 3000:1
SmartContrast: 80,000,000:1
Response time (typical): 4 ms (Gray to Gray)*
Viewing angle: 178° (H) / 178° (V), @ C/R > 10
Picture enhancement: SmartImage
Maximum resolution: 5120x1440@75Hz (HDMI/DP/USB-C)*
Effective viewing area: 1191.936(H)x335.232(V)mm, 1800R curvature*
Scanning Frequency: HDMI: 30 - 140 kHz (H) / 48-75 Hz (V); DP: 30 - 114 kHz (H) / 48-75 Hz (V); USB-C: 30 - 114 kHz (H) / 30-75 Hz (V)
sRGB
Delta E: < 2
SoftBlue
Flicker-free
Pixel Density: 109 PPI
Display Screen Coating: Anti-Glare, 3H, Haze 25%
SmartUniformity: 93 ~ 105%
EasyRead
Adaptive sync (VRR)
HDR: DisplayHDR 400 certified
EyeSafe

Connectivity

Signal Input: HDMI 2.1 TMDS x2, DisplayPort 1.4 x 1, USB-C x 1 (upstream, DP Alt mode, Data, PD)
Sync Input: Separate Sync, Sync on Green
Audio (In/Out): Audio out
RJ45: Ethernet LAN up to 1G
HDCP: HDCP 1.4 (HDMI / DisplayPort / USB-C), HDCP 2.2 (HDMI / DisplayPort / USB-C)
HBR3: HBR3
USB Hub: USB 3.2 Gen 1 / 5 Gbps, USB-B upstream x 1, USB-A downstream x 2 (with 1 for fast charge B.C 1.2), USB-C downstream x 1 (Data, PD 15W)

Power Delivery

Max power delivery: up to 100W (5V/3A, 7V/3A, 9V/3A, 10V/3A, 12V/3A, 15V/3A, 20V/3.25A, 20V/4.8A)*
Version: USB PD version 3.0

Convenience

Built-in Speakers: 3 W x 2
Plug & Play Compatibility: DDC/CI, Mac OS, sRGB, Windows 11 / 10 / 8.1 / 8
User convenience: SmartImage, Input, User, Menu, Power On/Off
OSD Languages: Brazil Portuguese, Czech, Dutch, English, French, Finnish, German, Greek, Hungarian, Italian, Japanese, Korean, Portuguese, Polish, Russian, Simplified Chinese, Spanish, Swedish, Traditional Chinese, Turkish, Ukrainian
Other convenience: Kensington lock, Earphone hook, VESA mount (100x100mm)
Control software: SmartControl
MultiView: PIP/PBP mode, 2x devices
KVM: Yes (USB-C/USB-B)

Stand

Height adjustment: 150 mm
Swivel: -/+30 degree
Tilt: -5/15 degree

Power

ECO mode: 34.18 W (typ.)
Power supply: Built-in, 100-240VAC, 50-60Hz
Off mode: Zero watts with AC switch
On mode: 52.27 W (typ.) (EnergyStar test method)
Standby mode: 0.3 W (typ.)
Power LED indicator: Operation - White, Standby mode- White (blinking)

Dimensions

Packaging in mm (WxHxD): 1290 x 475 x 300 mm
Product without stand (mm): 1193 x 373 x 164 mm
Product with stand(max height): 1193 x 583 x 268 mm

Weight

Product with packaging (kg): 22.70 kg
Product with stand (kg): 15.30 kg
Product without stand (kg): 11.67 kg

Operating conditions

Altitude: Operation: +12,000ft (3,658m), Non-operation: +40,000ft (12,192m)
Temperature range (operation): 0°C to 40 °C
Relative humidity: 20%-80 %
Temperature range (storage): -20°C to 60 °C
MTBF (demonstrated): 70,000 hrs (excluded backlight)

Sustainability

Environmental and energy: PowerSensor, LightSensor, EnergyStar 8.0, EPEAT*, RoHS
Post consumer recycled plastic: 85%+OBP 5%
Recyclable packaging material: 100 %
Specific Substances: Mercury free, PVC / BFR free housing

Compliance and standards

Regulatory Approvals: CB, CE Mark, ETL, CEC, TUV/GS, TUV Ergo, TCO Certified, TCO Certified Edge, EAC, EAC ROHS, MEPS, UKCA, EMF, FCC, ICES-003, TÜV Rheinland Low Blue Light (Hardware Solution), eyesafe® CERTIFIED 2.0

Cabinet

Finish: Texture
Foot: Silver
Front bezel: Charcoal
Rear cover: Charcoal

- * Radius of the arc of the display curvature in mm
- * Response time value equal to SmartResponse
- * NTSC Area based on CIE1976, sRGB Area based on CIE1931
- * Activities such as screen sharing, on-line streaming video and audio over the Internet can impact your network performance. Your hardware, network bandwidth and its performance will determine overall audio and video quality.
- * For USB-C power and charging function, your Notebook/device must support USB-C standard Power Delivery specifications. Please check with your Notebook user manual or manufacturer for more details.
- * If your Ethernet connection seems slow, please enter OSD menu and select USB 3.0 or higher version which can support the LAN speed to 1G.
- * For Video transmission via USB-C, your Notebook/device must support USB-C DP Alt mode
- * EPEAT rating is valid only where Philips registers the product. Please visit <https://www.epeat.net/> for registration status in your country.
- * When USB-C is set to High Resolution mode, the maximum supported resolution is 5120x1440@75Hz.
- * The power delivery of this display is up to 100 W (96 W in typical), the maximum power delivery will depend on your device.
- * When calculating energy costs saving from PowerSensor, both USB and Power delivery are excluded.
- * The monitor may look different from feature images.
- * The products and accessories listed on this leaflet may differ by country and region.

