

PHILIPS

LCD monitor

Business Monitor

3000 series

27" (68.5 cm)

2560 x 1440 (Quad HD)

27B2N3500G



Eye comfort engineered for the day ahead

Work comfortably and stay productive with Quad HD clarity and a smooth 144Hz refresh rate. SoftBlue Technology and Circular Polarization help reduce eye strain, making long hours easier on your eyes.

Designed for the way you work

- Built-in stereo speakers for multimedia
- SmartErgoBase enables people-friendly ergonomic adjustments
- Eyesafe certified blue light protection and color accuracy
- SoftBlue Technology: for comfortable viewing
- Less eye fatigue with Flicker-free technology

Easy to experience

- VESA mount for convenience
- HDMI ensures universal digital connectivity

Superb Picture Quality

- 144Hz refresh rates for ultra-smooth, brilliant images
- IPS LED wide view technology for image and color accuracy
- Crystalclear images with Quad HD 2560 x 1440 pixels

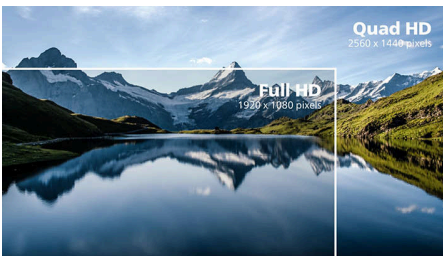
Highlights

IPS technology



IPS displays use an advanced technology which gives you extra wide viewing angles of 178/178 degree, making it possible to view the display from almost any angle. Unlike standard TN panels, IPS displays gives you remarkably crisp images with vivid colors, making it ideal not only for Photos, movies and web browsing, but also for professional applications which demand color accuracy and consistent brightness at all times.

Crystalclear images



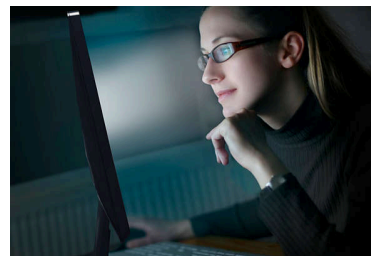
These Philips screens deliver Crystalclear, Quad HD 2560x1440 or 2560x1080 pixel images. Utilizing high performance panels with high density pixel count, enabled by high bandwidth sources, these new displays will make your images and graphics come alive. Whether you are demanding professional requiring extremely detailed information for CAD-CAM solutions, using 3D graphic applications or a financial wizard working on huge spreadsheets, Philips displays will give you Crystalclear images.

144Hz Fast refresh



This monitor is equipped with a 144Hz refresh rate which effectively reduces motion blur and input lag from your display. Whether you're working on detailed creative work, multitasking, competitive gaming, or just browsing the web — you enjoy an enhanced desktop experience with better visual motion clarity and reduced eye strain.

SoftBlue Technology with Circular Polarization



SoftBlue LED technology enhances visual comfort by reducing harmful blue light. With the low blue-light panel, the ratio of display emission light in the range of 415-455 nm to 400-500nm is reduced to less than 50%. It also utilizes unique Circular Polarization technology, which produces an improved natural light output compared to linear polarization. The result is optimal visual comfort and minimized eye strain. This technology is also tested and certified by TÜV Rheinland Low Blue Light (Hardware Solution) for its effectiveness in reducing blue light emissions and relieving eye strain.

Built-in stereo speakers



A pair of high quality stereo speakers built into a display device. It can be visible front firing, or invisible down firing, top firing, rear firing, etc depending on model and design.

Flicker-free technology



Due to the way brightness is controlled on LED-backlit screens, some users experience flicker on their screen which causes eye fatigue. Philips Flicker-free Technology applies a new solution to regulate brightness and reduce flicker for more comfortable viewing.

eyesafe® CERTIFIED 2.0 (RPF 40)



The Philips display meets the eyesafe® CERTIFIED 2.0 standard to truly protect you from the long exposure to blue light. The always-on blue light filter not only helps reduce digital eye strain, but also guarantees color integrity.



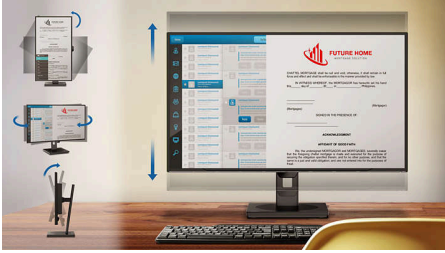
Business Monitor

LCD monitor

27B2N3500G/69

Highlights

SmartErgoBase



The SmartErgoBase is a monitor base that delivers ergonomic display comfort and provides cable management. The base can swivel, tilt and rotate to various angles to ensure maximum comfort. The height adjustable stand guarantees the optimal viewing level, reducing the physical

strains of a long workday, while cable management reduces cable clutter and keeps the workspace neat and professional.

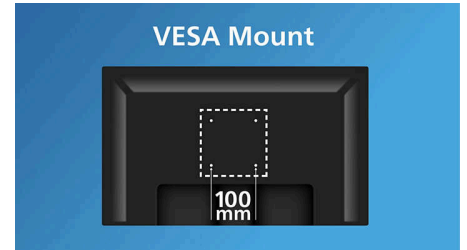
HDMI Ready



An HDMI-ready device has all the required hardware to accept High-Definition Multimedia Interface (HDMI) input. A HDMI cable enables

high-quality digital video and audio all transmitted over a single cable from a PC or any number of AV sources (including set-top boxes, DVD players, A/V receivers and video cameras).

VESA mount for convenience



VESA mount for convenience

Specifications

Picture/Display

Panel Size: 27 inch / 68.5 cm
Aspect ratio: 16:9
LCD panel type: IPS technology
Backlight type: W-LED system
Pixel pitch: 0.2331x0.2331mm
Brightness: 350 cd/m²
Display colors: 16.7M (8 bit)
Color gamut (typical): sRGB 113% , NTSC 107% *
Contrast ratio (typical): 1500:1
SmartContrast: 50,000,000:1
Response time (typical): 4 ms (Gray to Gray)*
Viewing angle: 178° (H) / 178° (V), @ C/R > 10
Picture enhancement: SmartImage
Maximum resolution: 2560x1440@144Hz
Effective viewing area: 596.74(H) x 335.66(V) mm
Scanning Frequency: 30-230KHz (H) / 48 -144 Hz (V)
sRGB
SoftBlue: Yes*
Flicker-free
Pixel Density: 108.79 PPI
Display Screen Coating: Anti-Glare, 3H, Haze 25%
EasyRead
Adaptive sync (VRR)
EyeSafe

Connectivity

Signal Input: HDMI 2.1 TMDS x2, DisplayPort 1.2 x 1
Sync Input: Separate Sync, Sync on Green
Audio (In/Out): Audio out
HDCP: HDCP 1.4 (HDMI / DisplayPort), HDCP 2.3 (HDMI / DisplayPort)
USB Hub: USB3.2, Gen1, 5G, Upstream: USB-B x1; Downstream: USB-A x4 (with x1 fast charge B.C 1.2)

Convenience

Built-in Speakers: 2W x 2
Plug & Play Compatibility: DDC/CI, Mac OS, sRGB, Windows 11 / 10
User convenience: SmartImage, Input, Brightness, Menu, Power On/Off
OSD Languages: Brazil Portuguese, Czech, Dutch, English, French, Finnish, German, Greek, Hungarian, Italian, Japanese, Korean, Portuguese, Polish, Russian, Simplified Chinese,

Spanish, Swedish, Traditional Chinese, Turkish, Ukrainian
Other convenience: Kensington lock, VESA mount (100x100mm)
Control software: SmartControl

Stand

Height adjustment: 150 mm
Pivot: -/+90 degree
Swivel: -/+180 degree
Tilt: -5/30 degree

Power

ECO mode: 11.6 W (typ.)
Power supply: Built-in, 100-240VAC, 50-60Hz
Off mode: 0.3W (typ)
On mode: 17.85 W (typ.) (EnergyStar test method)
Standby mode: 0.3W (typ)
Power LED indicator: Operation - White, Standby mode- White (blinking)

Dimensions

Packaging in mm (WxHxD): 690 x 455 x 139 mm
Product without stand (mm): 616 x 362 x 46 mm
Product with stand(max height): 616 x 539 x 228 mm

Weight

Product with packaging (kg): 8.45 kg
Product with stand (kg): 5.98 kg
Product without stand (kg): 3.98 kg

Operating conditions

Altitude: Operation: +12,000ft (3,658m), Non-operation: +40,000ft (12,192m)
Temperature range (operation): 0°C to 40 °C
Relative humidity: 20%-80 %
Temperature range (storage): -20°C to 60 °C
MTBF (demonstrated): 70,000 hrs (excluded backlight)

Sustainability

Environmental and energy: Energy Star, EPEAT*, RoHS
Post consumer recycled plastic: 85%
Recyclable packaging material: 100 %
Specific Substances: PVC / BFR free housing

Compliance and standards

Regulatory Approvals: CB, CE Mark, MEPS, KC, KCC, CEL, CCC, CECP, UKCA, FCC, ICES-003, TÜV Rheinland Low Blue Light (Hardware Solution), TÜV Rheinland Circular Polarization, eyesafe® CERTIFIED 2.0

Cabinet

Finish: Texture
Foot: Black
Front bezel: Black
Rear cover: Black

Design

Designed in Amsterdam, NL



* "IPS" word mark / trademark and related patents on technologies belong to their respective owners.

* Response time value equal to SmartResponse

* sRGB area based on CIE 1931, NTSC area based on CIE 1976

* EPEAT rating is valid only where Philips registers the product. Please visit <https://www.epeat.net/> for registration status in your country.

* The products and accessories listed on this leaflet may differ by country and region.

* The monitor may look different from feature images.