

PHILIPS

EVNIA



Full HD gaming
monitor

Fast IPS Gaming monitor

Evnia 3000

24 (23.8" / 60.5 cm diag.)

1920 x 1080 (Full HD)



24M2N3201PL

Broaden your gaming horizon

This Fast IPS monitor elevates your gaming experience with an overclockable 260 Hz refresh rate and 0.3 ms Smart MBR. With sharp HDR imagery and Full HD resolution guaranteed, this monitor produces an excellent all-around gaming experience.

Features designed for gamers' needs

- Evnia Precision Centre: Maximise Your Gaming Experience
- Smart MBR: for reducing motion blur.
- SmartImage game mode optimised for gamers
- SoftBlue Technology: for comfortable viewing
- Smart Crosshair: for better aim and more fun

Built for fast action

- Ultra-fast 260 Hz refresh rate for virtually lag-free gaming
- 0.3 ms ultra-fast speed for crisp image and smooth gameplay
- Fast IPS Panel: For rapid and crystal-clear gaming
- Low input lag reduces time delay between devices to monitor

Immersive visuals

- High Dynamic Range (HDR) for more lifelike colourful visuals
- SmartContrast for rich black details

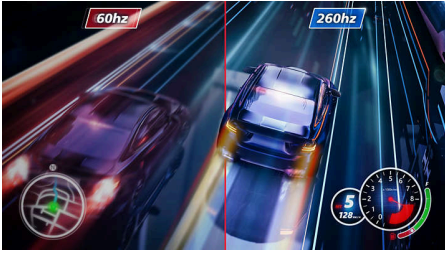
Fast IPS Gaming monitor

Full HD gaming monitor

24M2N3201PL/00

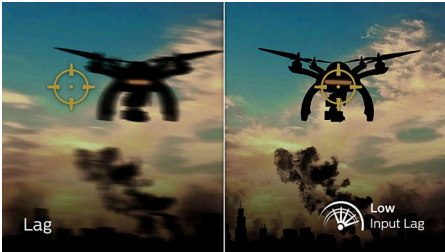
Highlights

Overclockable 260 Hz refresh rate



While playing the most intense, engaging, action-oriented games, Philips Evnia offers an overclockable 260 Hz refresh rate that enhances an ultra-smooth, lag-free gaming experience. It gives superior motion and clarity visuals, especially for fast-paced games like FPS and racing. You will experience deeper immersion and feel alive in-game.

Low input lag



Input lag is the amount of time that elapses between performing an action with connected devices and seeing the result on screen. Low input lag reduces the time delay between entering a command from your devices to monitor, greatly improving play on twitch-sensitive video games, particularly important for playing fast-paced, competitive games.

0.3 ms Smart MBR fast response



The Philips display with 0.3 ms Smart MBR effectively eliminates smearing and motion blur, and delivers sharper and more precise visuals to enhance your gaming experience. Fast-moving

action and dramatic transitions will be rendered smoothly. The best choice for playing thrilling and movement-sensitive games.

Fast IPS



This feature is made for action-packed gameplay. Not only does it produce virtually blur-free gaming, but it also pairs well with high frame rates for the best and sharpest imagery, guaranteed.

SmartContrast



SmartContrast is a Philips technology that analyses the contents you are displaying, automatically adjusting colours and controlling backlight intensity to dynamically enhance contrast for the best digital images and videos or when playing games where dark hues are displayed. When Economy mode is selected, contrast is adjusted and backlighting fine-tuned for just-right display of everyday office applications and lower power consumption.

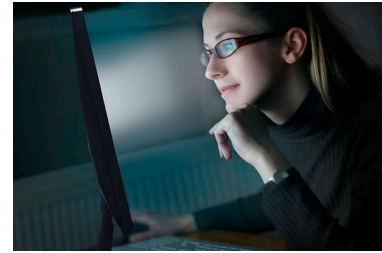
High Dynamic Range (HDR)



High Dynamic Range delivers a dramatically different visual experience. With astonishing brightness, incomparable contrast and

captivating colour, images come to life with much greater brightness while also featuring much deeper, more nuanced darks. It renders a fuller palette of rich new colours never before seen on a display, giving you a visual experience that engages your senses and inspires emotions.

SoftBlue Technology



SoftBlue LED technology, combined with the monitor's low blue light panel, is an effective solution for reducing the adverse health effects caused by high exposure to blue light. In this monitor's panel, the ratio of light is reduced by nearly 50 percent while the SoftBlue LED technology works simultaneously by reducing the harmful blue light rays emitted from the screen.

SmartImage Game mode



The new Philips gaming display has quick-access OSD fine-tuned for gamers, offering you multiple options. "FPS" mode (First person shooting) improves dark themes in games, allowing you to see hidden objects in dark areas. "Racing" mode adapts the display with the fastest response time and high colour, along with image adjustments. "RTS" mode (Real-time strategy) has a special SmartFrame mode that enables highlighting of specific area and allows for size and image adjustments. Gamer 1 and Gamer 2 enable you to save personal customised settings based on different games, ensuring best performance.



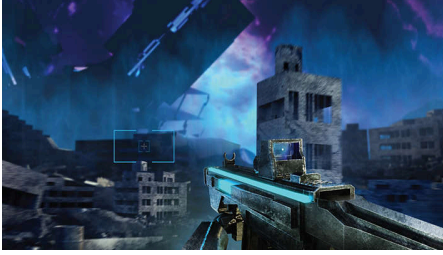
Fast IPS Gaming monitor

Full HD gaming monitor

24M2N3201PL/00

Highlights

Smart Crosshair



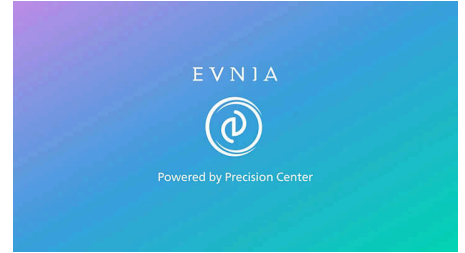
Colour of Crosshair is set by default. When Smart Crosshair is on, the colour will change as a complementary colour to the background colour. Smart Crosshair enhances the aiming accuracy so you can spot the enemies more easily.

Smart MBR



In an effort to reduce motion blur, this monitor's LED backlight will work simultaneously with the refresh rate to control brightness levels for the best picture clarity. Please note that Smart MBR is a type of gaming mode and it is recommended to turn the function off when not gaming as it may cause screen-flickering.

Evnia Precision Centre



Evnia Precision Centre is an easy-to-use software designed to optimise and personalise your Evnia monitor. Whether you're a casual or competitive gamer, it offers a wide range of customisation options to match your unique gaming style. With intuitive controls and seamless navigation, Evnia Precision Centre gives you full control, providing everything you need to elevate your gaming to the next level — right at your fingertips.

Fast IPS Gaming monitor

Full HD gaming monitor

24M2N3201PL/00

Specifications

Picture/Display

Panel Size: 23.8"/60.5 cm
Aspect ratio: 16:9
LCD panel type: Fast IPS
Backlight type: W-LED system
Pixel pitch: 0.2745 x 0.2745 mm
Brightness: 300 cd/m²
Display colours: 16.7 M
Colour gamut (typical): Adobe RGB 86%; DCI-P3:85.9%, sRGB: 107%, NTSC 95.3%*
Contrast ratio (typical): 1000:1
SmartContrast: Mega Infinity DCR
Response time (typical): 1 ms (Grey to Grey)*
Viewing angle: 178° (H)/178° (V), @ C/R > 10
Picture enhancement: SmartImage game
Maximum resolution: 1920 x 1080 @ 260 Hz (Overclock*, HDMI/DP)
Effective viewing area: 527.04 (H) x 296.46 (V) mm
Scanning Frequency: 30-290 kHz(H)/48-260 Hz(V) (Overclock)*
sRGB
Flicker-free
Pixel Density: 92.56 PPI
Display Screen Coating: Anti-Glare, 3H, Haze 25%
Low Input Lag
Adaptive sync (VRR)
HDR: HDR 10 supported
Smart MBR: 0.3 ms*
Smart MBR Sync
Smart Crosshair
Shadow Boost
SoftBlue technology: Yes*

Connectivity

Signal Input: HDMI 2.1 TMDS x 1, DisplayPort 1.4 x 1
Audio (In/Out): Headphone out
HDCP: HDCP 1.4 (HDMI/DP), HDCP 2.2 (HDMI/DP)

Convenience

Plug and Play Compatibility: DDC/CI, Mac OS, sRGB, Windows 11/10
User convenience: Power On/Off, Menu/OK, Input/Up, Game Settings/Down, SmartImage game/Back
OSD Languages: Brazil Portuguese, Czech, Dutch, English, Finnish, French, German, Greek, Hungarian, Italian, Japanese, Korean, Polish,

Portuguese, Russian, Spanish, Simplified Chinese, Swedish, Turkish, Traditional Chinese, Ukrainian
Other convenience: Kensington lock, VESA mount (100 x 100 mm), LowBlue Mode
Control software: Evnia Precision Centre

Stand

Tilt: -5/20 degree

Power

Power supply: Internal, 100–240 VAC, 50–60 Hz
Off mode: 0.3 W (typ.)
On mode: 16.2 W (typ.)
Standby mode: 0.5 W (typ.)
Power LED indicator: Operation - White, Standby mode - White (flashing)
Energy Label Class: D

Dimensions

Packaging in mm (W x H x D):
690 x 420 x 124 mm
Product without stand (mm): 540 x 325 x 55 mm
Product with stand (max height):
540 x 433 x 195 mm

Weight

Product with packaging (kg): 5.36 kg
Product with stand (kg): 3.14 kg
Product without stand (kg): 2.55 kg

Operating conditions

Altitude: Operation: +12,000 ft (3658 m), Non-operation: +40,000 ft (12,192 m)
Temperature range (operation): 0°C to 40 °C
MTBF: 50,000 (Excluded backlight) hour(s)
Relative humidity: 20%-80 %
Temperature range (storage): -20°C to 60 °C

Sustainability

Environmental and energy: RoHS
Recyclable packaging material: 100 %
Post-consumer recycled plastics: 85%*

Compliance and standards

Regulatory Approvals: CB, CE Mark, TUV/ISO9241-307, TUV-BAUART, EAC, EAC ROHS, UKCA, EMF, FCC, ICES-003

Cabinet

Colour: White
Finish: Textured

What's in the box?

Cables: DP cable, HDMI cable, Power cable
Monitor with stand
User Documentation



* "IPS" word mark / trademark and related patents on technologies belong to their respective owners.
* The maximum resolution works for either HDMI input or DP input.
* For best output performance, please always ensure that your graphic card is capable of achieving the maximum resolution and refresh rate of this Philips display.
* Response time value equal to SmartResponse
* Smart MBR adjusts brightness for blur reduction, so you cannot adjust brightness while Smart MBR is turned on. To reduce motion blur, the LED backlight will strobe synchronously with each screen refresh, which may cause a noticeable change in brightness.
* Smart MBR is a gaming-optimised mode. Turning on Smart MBR may cause noticeable screen flickering. We recommended turning it off when you are not using the gaming function.
* Adobe RGB and DCI-P3 Coverage based on CIE1976, sRGB Area based on CIE1931, NTSC Area based on CIE1976.
* This monitor strives for sustainability: the monitor's chassis is made up of 85% post-consumer recycled plastic.
* Low blue light compliance: The ratio of display emission light in the range from 415 - 455 nm to the display emission of 400 - 500 nm shall be less than 50%.
* The Overclock function increases the native refresh rate, however, it does have some associated risks along with it. If the screen is displayed abnormally after rebooting, please switch off the Overclock setting located in the monitor's OSD menu.
* The monitor may look different from feature images.
* The products and accessories listed on this leaflet may differ by country and region.