

PHILIPS

LCD monitor with
USB-C

Business Monitor

3000 series

24 (23.8" / 60.47 cm diag.)

1920 x 1080 (Full HD)

24B2U3301H



Redefining workflow productivity

Speed through daily tasks in comfort with this monitor's SoftBlue technology, Full HD resolution and 120 Hz refresh rate. Not to mention, SmartErgoBase adds an ergonomic touch to the monitor's feature list.

Designed for the way you work

- Built-in stereo speakers for multimedia
- Smart Link Sync: for uniform daisy-chained displays
- Windows Hello Compatible – Seamless, Secure Access
- SmartErgoBase enables user-friendly ergonomic adjustments
- D-Mode: Optimised for subtle greyscale perception
- Less eye fatigue with Flicker-Free technology
- Eyesafe-certified blue light protection and colour accuracy
- SoftBlue Technology: for comfortable viewing

Single cable USB-C connection

- RJ-45 to USB-C gives easy network connection with security
- USB 3.2 high-speed data transfer

Superb Picture Quality

- 120 Hz refresh rates for ultra-smooth images
- 16:9 Full HD display for crisp, detailed images

Highlights

IPS technology



IPS displays use an advanced technology that gives you extra-wide viewing angles of 178/178 degrees, making it possible to view the display from almost any angle. Unlike standard TN panels, IPS displays give you remarkably crisp images with vivid colours, making them ideal not only for Photos, movies and web browsing, but also for professional applications that demand colour accuracy and consistent brightness at all times.

16:9 Full HD display



Picture quality matters. Regular displays deliver quality, but you expect more. This display features enhanced Full HD 1920 x 1080 resolution. With Full HD for crisp detail paired with high brightness, incredible contrast and realistic colours, expect a true-to-life picture.

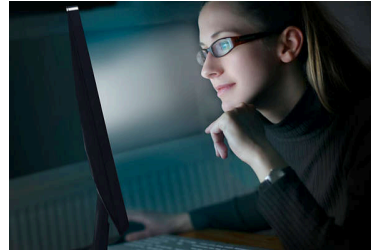
120 Hz fast refresh



The smoother the motion, the less strain on your eyes. This Philips monitor is equipped with an improved 120 Hz refresh rate. Whenever you

scroll, switch between applications or navigate complex spreadsheets, you experience smoother and more precise movements. That means you can work as long as you need with minimal visual fatigue—all while increasing the speed of your workflow.

SoftBlue Technology with Low Blue Light Panel



SoftBlue technology offers increased visual comfort and protection against adverse health effects caused by prolonged exposure to blue light. With the low blue-light panel, the ratio of display emission light in the range of 415-455 nm to 400-500 nm is reduced to less than 50%. As a result, the SoftBlue technology provides optimal visual comfort, minimises eye strain and supports sustained focus. Not to mention, SoftBlue LED technology is tested and TÜV Rheinland Low Blue Light (Hardware Solution) certified for its effectiveness in reducing blue light emissions.

Built-in stereo speakers



A pair of high-quality stereo speakers built into a display device. They may be visible front firing, or invisible down firing, top firing, rear firing etc. depending on model and design.

Flicker-Free technology



Due to the way brightness is controlled on LED-backlit screens, some users experience flicker on their screen which causes eye fatigue. Philips Flicker-Free technology applies a new solution to regulate brightness and reduce flicker for more comfortable viewing.

Windows Hello Compatible



Log in faster and more securely with Windows Hello. The webcam on this Philips monitor is compatible with Windows Hello, offering quick facial recognition and effortless access - every time you power on.

eyesafe® CERTIFIED 2.0 (RPF 50)

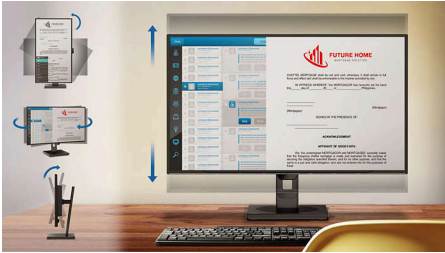


The Philips display meets the eyesafe® CERTIFIED 2.0 standard to truly protect you from long exposure to blue light. The always-on blue light filter not only helps reduce digital eye strain, but also guarantees colour integrity.



Highlights

SmartErgoBase



The SmartErgoBase is a monitor base that delivers ergonomic display comfort and provides cable management. The base can swivel, tilt and rotate to various angles to ensure maximum comfort. The height-adjustable stand guarantees the optimal viewing level, reducing the physical strains of a long workday, while cable management reduces cable clutter and keeps the workspace neat and professional.

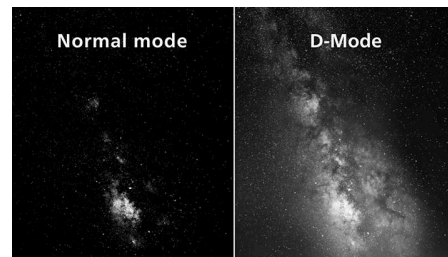
Smart Link Sync



Easily create a seamless multi-monitor workspace with Smart Link Sync, designed to automatically align display settings across daisy-chained

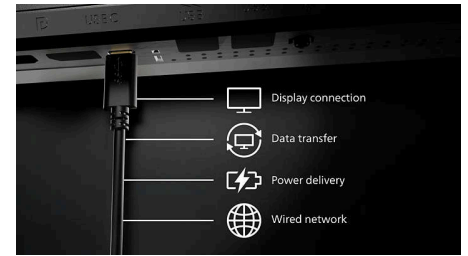
monitors. Whether you're designing, presenting or multitasking, enjoy consistent brightness and colour without manual tweaks. Choose from OSD Sync or Light Sync modes (Low, Mid or High) on the primary monitor to match your environment. For identical monitors, any mode ensures uniform visuals; for mixed models, Light Sync intelligently adjusts luminance for a balanced, professional look across screens.

D-Mode



Reveal every hidden detail in the dark-toned areas of your display. D-Mode enhances greyscale detail to make subtle tonal differences easier to see. Based on the greyscale perception model defined by the DICOM Part 14 GSDF standard, it improves the visibility of details that standard display settings may miss. The result is clearer differentiation between subtle shades and improved detail visibility in greyscale content such as technical illustrations, scans and other high-detail imagery.

USB-C Docking with RJ45



Simplify all peripherals from monitor to PC using one-cable docking USB Type-C connector, including networking, high-resolution video output from PC to monitor, and surfing on the Internet without an additional network cable, even without a LAN port on your notebook. RJ45 connection through USB-C offers a fast and secure connection when needed. Getting the fastest data speeds allows you to transfer data from a HDD to your PC faster than ever. Additionally, USB-C with power delivery can even enable you to power and charge your notebook from the monitor, eliminating the need for extra power cables.



USB-C Docking

Specifications

Picture/Display

Panel Size: 23.8 inch/60.47 cm
Aspect ratio: 16:9
LCD panel type: IPS technology
Backlight type: W-LED system
Pixel pitch: 0.2745 (H) mm x 0.2745 (V) mm
Brightness: 350 cd/m²
Display colours: 16.7M (8 bit)
Colour gamut (typical): sRGB 110% , NTSC 96% *
Contrast ratio (typical): 1500:1
SmartContrast: 50,000,000:1
Response time (typical): 4 ms (Grey to Grey)*
Viewing angle: 178° (H)/178° (V), @ C/R > 10
Picture enhancement: SmartImage
Maximum resolution: 1920 x 1080 @ 120 Hz
Effective viewing area: 527.04 (H) x 296.46 (V) mm
Scanning Frequency: 30k-140 k Hz (H) / 48-120 Hz (V)
sRGB
SoftBlue
Flicker-free
Pixel Density: 93 PPI
Display Screen Coating: Anti-Glare, 3H, Haze 25%
EasyRead
Adaptive sync (VRR)
EyeSafe
Smart Link Sync: When used as a primary or secondary monitor*
DICOM (D-mode)

Connectivity

Signal Input: HDMI 1.4 x 1, DisplayPort 1.4 x 1, USB-C x 1 (upstream, DP Alt mode, Data, PD)
Sync Input: Separate Sync, Sync on Green
Audio (In/Out): Audio out
RJ45: Ethernet LAN (USB 2.0: 10M/100M; USB 3.0: 1000M), PXE/MAPT/WOL*
Signal Output: DP out
HDCP: HDCP 1.4/2.2 (HDMI/DisplayPort/USB-C)
HBR3: Yes (DP, USB-C)
USB Hub: USB3.2, Gen1, 5G, upstream: 1 x USB-C1 (Full), downstream: USB3.2 x 3 (with x 1 fast-charge B.C 1.2), USB-C2 x 1 (data, 15 W)

Power Delivery

Max power delivery: Up to 90 W (5 V/3 A, 7 V/3 A, 9 V/3 A, 10 V/3 A, 12 V/3 A, 15 V/3 A, 20 V/3.25 A, 20 V/4.5 A)
Version: USB PD version 3.0

Convenience

Built-in Speakers: 2 W x 2
Plug and Play Compatibility: DDC/CI, Mac OS, sRGB, Windows 11/10
User convenience: SmartImage, Input, Brightness, Menu, Power On/Off
OSD Languages: Brazil Portuguese, Czech, Dutch, English, French, Finnish, German, Greek, Hungarian, Italian, Japanese, Korean, Portuguese, Polish, Russian, Simplified Chinese, Spanish, Swedish, Traditional Chinese, Turkish, Ukrainian
Other convenience: Kensington lock, VESA mount (100 x 100 mm)
Control software: SmartControl
Built-in webcam: 5.0 megapixel camera with microphone and LED indicator (for Windows Hello)
Webcam tilt function: Yes, -/+30 degree

Stand

Height adjustment: 150 mm
Pivot: -/+90 degree
Swivel: -/+ 180 degree
Tilt: -5/30 degree

Power

ECO mode: 11.0 W (typ.)
Power supply: Built-in, 100–240 VAC, 50–60 Hz
Off mode: 0.3 W (typ.)
On mode: 14.36 W (typ.) (Energy Star test method)
Standby mode: 0.35 W (typ.)
Power LED indicator: Operation - White, Standby mode - White (flashing)
Energy Label Class: D

Dimensions

Packaging in mm (W x H x D): 615 x 420 x 139 mm
Product without stand (mm): 542 x 320 x 48 mm
Product with stand (max height): 542 x 499 x 228 mm

Weight

Product with packaging (kg): 7.94 kg
Product with stand (kg): 5.74 kg
Product without stand (kg): 4.07 kg

Operating conditions

Altitude: Operation: +12,000 ft (3658 m), Non-operation: +40,000 ft (12,192 m)
Temperature range (operation): 0°C to 40 °C
Relative humidity: 20%-80 %
Temperature range (storage): -20°C to 60 °C
MTBF (demonstrated): 70,000 hrs (excluded backlight)

Sustainability

Environmental and energy: Energy Star, EPEAT*, RoHS
Post-consumer recycled plastic: 85%
Recyclable packaging material: 100 %
Specific Substances: PVC/BFR free housing

Compliance and standards

Regulatory Approvals: CB, CE Mark, TUV/GS, TUV Ergo, TCO Certified, TCO Certified Edge, EAC, EAC ROHS, MEPS, UKCA, EMF, FCC, ICES-003, TÜV Rheinland Low Blue Light (Hardware Solution), eyesafe® CERTIFIED 2.0
Warranty: 5 years

Cabinet

Finish: Texture
Foot: Black
Front bezel: Black
Rear cover: Black

What's in the box?

Cables: HDMI cable, DisplayPort cable, USB-C to C cable, Power cable
Monitor with stand
User Documentation

* "IPS" word mark / trademark and related patents on technologies belong to their respective owners.

* Response time value equal to SmartResponse

* sRGB area based on CIE 1931; NTSC area based on CIE 1976

* EPEAT rating is valid only where Philips registers the product. Please visit <https://www.epeat.net/> for registration status in your country.

* The 5 year warranty is a voluntary manufacturer's limited warranty. It applies only in the countries listed on this page <https://www.philips.co.uk/c-e/so/monitors/tco-certified-edge>. For consumers, it is provided in addition to, and without affecting, their legal rights under applicable national laws. For non-consumer (business/professional) end users, only the manufacturer's limited warranty terms apply.

* For Smart Link Sync to function properly, all daisy-chained monitors must be compatible with Smart Link.

* RJ45 supports PXE (Preboot eXecution Environment), MAC Address Pass-Through (MAPT) and Wake-on-LAN (WOL) on compatible systems. Support may vary depending on system configuration.

* The products and accessories listed on this leaflet may differ by country and region.

* The monitor may look different from feature images.

