

# PHILIPS

## LCD monitor

### Business Monitor

3000 series

24 (23.8" / 60.47 cm diag.)

1920 x 1080 (Full HD)

24B2N3200J



## Redefining workflow productivity

This monitor delivers business efficiency. Not only is it equipped with essential features, but it also has ones that stand out like its 120hz refresh rate, SoftBlue, Flicker-Free, VESA mount, and more.

### Designed for the way you work

- Built-in stereo speakers for multimedia
- SmartErgoBase enables people-friendly ergonomic adjustments
- Smart Link Sync: Matches primary display on second screen
- Eyesafe certified blue light protection and color accuracy
- Ultra Slim Bezel: for minimal edges and more screen
- SoftBlue Technology: for comfortable viewing
- Less eye fatigue with Flicker-free technology

### Easy to experience

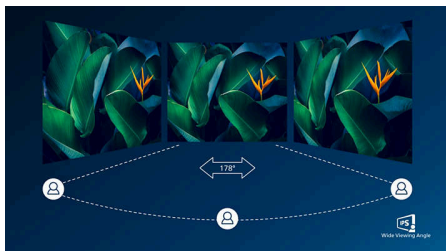
- VESA mount for convenience
- HDMI ensures universal digital connectivity

### Superb Picture Quality

- 120Hz refresh rates for ultra-smooth images
- 16:9 Full HD display for crisp detailed images
- IPS LED wide view technology for image and color accuracy

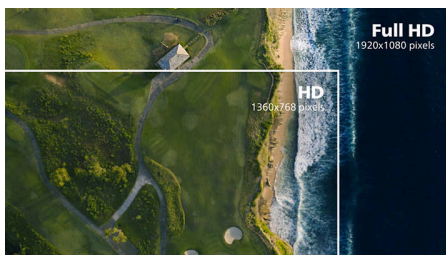
# Highlights

## IPS technology



IPS displays use an advanced technology which gives you extra wide viewing angles of 178/178 degree, making it possible to view the display from almost any angle. Unlike standard TN panels, IPS displays gives you remarkably crisp images with vivid colors, making it ideal not only for Photos, movies and web browsing, but also for professional applications which demand color accuracy and consistent brightness at all times.

## 16:9 Full HD display



Picture quality matters. Regular displays deliver quality, but you expect more. This display features enhanced Full HD 1920 x 1080 resolution. With Full HD for crisp detail paired with high brightness, incredible contrast and realistic colors expect a true to life picture.

## 120Hz Fast refresh



For gaming and video performance, you demand display with lag free, ultra-smooth images. This Philips display redraws the screen image up-to 120 times per second, much faster than a standard display. A lower frame rate can make enemies appear to jump from spot to spot on the

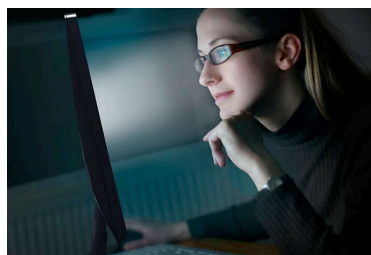
screen, making them difficult targets to hit. With 120Hz frame rate, you get those critical missing images on the screen which shows enemy movement in ultra-smooth motion so you can easily target them.

## Ultra Slim Bezel



This monitor makes your viewing experience feel more seamless and complete by reducing the amount of frame surrounding the screen. The Ultra Slim Bezel feature makes for an elegant transition from the screen to the narrow monitor bezel; thereby making it more beautiful in form and function.

## SoftBlue Technology with Low Blue Light Panel



SoftBlue technology offers increased visual comfort and protection against adverse health effects caused by prolonged exposure to blue light. With the low blue-light panel, the ratio of display emission light in the range of 415-455 nm to 400-500nm is reduced to less than 50%. As a result, the SoftBlue technology provides optimal visual comfort, minimizes eye strain, and supports sustained focus. Not to mention, SoftBlue LED technology is tested and TÜV Rheinland Low Blue Light (Hardware Solution) certified for its effectiveness in reducing blue light emissions.

## Flicker-free technology



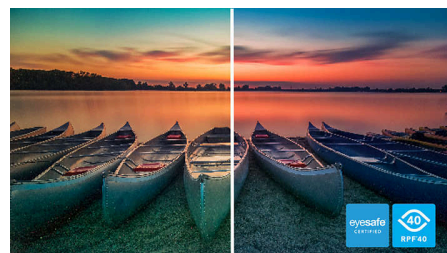
Due to the way brightness is controlled on LED-backlit screens, some users experience flicker on their screen which causes eye fatigue. Philips Flicker-free Technology applies a new solution to regulate brightness and reduce flicker for more comfortable viewing.

## Smart Link Sync Second Screen Harmony



When connected as a secondary monitor in a daisy-chain setup with a Smart Link Sync enabled primary display, brightness and color settings are automatically synchronized. There is no manual adjustments needed. Whether you're designing, presenting, or multitasking, enjoy seamless visual consistency across screens. Choose from OSD Sync or Light Sync modes (Low, Mid, or High) in the primary monitor to match your environment.

## eyesafe® CERTIFIED 2.0 (RPF 40)

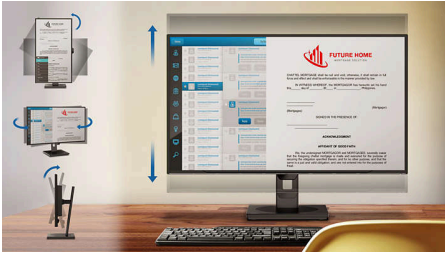


The Philips display meets the eyesafe® CERTIFIED 2.0 standard to truly protect you from the long exposure to blue light. The always-on blue light filter not only helps reduce digital eye strain, but also guarantees color integrity.



## Highlights

### SmartErgoBase



The SmartErgoBase is a monitor base that delivers ergonomic display comfort and provides cable management. The base can swivel, tilt and rotate to various angles to ensure maximum comfort. The height adjustable stand guarantees the optimal viewing level, reducing the physical strains of a long workday, while cable management reduces cable clutter and keeps the workspace neat and professional.

### Built-in stereo speakers



A pair of high quality stereo speakers built into a display device. It can be visible front firing, or invisible down firing, top firing, rear firing, etc depending on model and design.

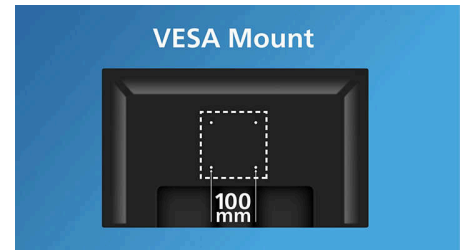
### HDMI Ready



An HDMI-ready device has all the required hardware to accept High-Definition Multimedia Interface (HDMI) input. A HDMI cable enables

high-quality digital video and audio all transmitted over a single cable from a PC or any number of AV sources (including set-top boxes, DVD players, A/V receivers and video cameras).

### VESA mount for convenience



VESA mount for convenience



# Specifications

## Picture/Display

**Panel Size:** 23.8 inch / 60.47 cm  
**Aspect ratio:** 16:9  
**LCD panel type:** IPS technology  
**Backlight type:** W-LED system  
**Pixel pitch:** 0.2745(H)mm x 0.2745(V)mm  
**Brightness:** 300 cd/m<sup>2</sup>  
**Display colors:** 16.7M (8 bit)  
**Color gamut (typical):** sRGB: 110% ,NTSC: 96% \*  
**Contrast ratio (typical):** 1500:1  
**SmartContrast:** 50,000,000:1  
**Response time (typical):** 4 ms (Gray to Gray)\*  
**Viewing angle:** 178° (H) / 178° (V), @ C/R > 10  
**Picture enhancement:** SmartImage  
**Maximum resolution:** 1920x1080@75Hz (VGA), 1920x1080@120Hz (HDMI/DP)  
**Effective viewing area:** 527.04(H)x296.46(V) mm  
**Scanning Frequency:** VGA: 30 KHz - 85 KHz (H)/ 48 Hz - 75 Hz; HDMI/DP: 30k - 140 kHz (H) / 48 Hz - 120 Hz (V)  
**sRGB**  
**SoftBlue**  
**Flicker-free**  
**Pixel Density:** 93 PPI  
**Display Screen Coating:** Anti-Glare, 3H, Haze 25%  
**EasyRead**  
**Adaptive sync**  
**EyeSafe**  
**Smart Link Sync:** When used as a secondary monitor only\*

## Connectivity

**Signal Input:** VGA x1, HDMI 1.4 x 1, DisplayPort 1.2 x 1  
**Sync Input:** Separate Sync, Sync on Green  
**Audio (In/Out):** Audio out  
**Audio (In/Out):** Audio-in  
**HDCP:** HDCP 1.4 (HDMI / DisplayPort )  
**USB Hub:** USB3.2, Gen1, 5G, Upstream: 1x USB-B Downstream: USB-A x4 (with x1 fast charge B.C 1.2)

## Convenience

**Built-in Speakers:** 2Wx2  
**Plug & Play Compatibility:** DDC/CI, Mac OS, sRGB, Windows 11 / 10  
**User convenience:** SmartImage, Input, Brightness, Menu, Power On/Off  
**OSD Languages:** Brazil Portuguese, Czech, Dutch, English, French, Finnish, German, Greek,

Hungarian, Italian, Japanese, Korean, Portuguese, Polish, Russian, Simplified Chinese, Spanish, Swedish, Traditional Chinese, Turkish, Ukrainian

**Other convenience:** Kensington lock, VESA mount (100x100mm)

**Control software:** SmartControl\*

## Stand

**Height adjustment:** 150 mm  
**Pivot:** -/+90 degree  
**Swivel:** -/+180 degree  
**Tilt:** -5/30 degree

## Power

**ECO mode:** 7.7 W (typ.)  
**Power supply:** Built-in, 100-240VAC, 50-60Hz  
**Off mode:** 0.3W (typ)  
**On mode:** 12.14 W (typ.) (EnergyStar test method)  
**Standby mode:** 0.3W (typ)  
**Power LED indicator:** Operation - White, Standby mode- White (blinking)

## Dimensions

**Packaging in mm (WxHxD):** 615 x 385 x 139 mm  
**Product without stand (mm):** 542 x 320 x 46 mm  
**Product with stand(max height):** 542 x 499 x 228 mm

## Weight

**Product with packaging (kg):** 7.58 kg  
**Product with stand (kg):** 5.57 kg  
**Product without stand (kg):** 3.55 kg

## Operating conditions

**Altitude:** Operation: +12,000ft (3,658m), Non-operation: +40,000ft (12,192m)  
**Temperature range (operation):** 0°C to 40 °C  
**Relative humidity:** 20%-80 %  
**Temperature range (storage):** -20°C to 60 °C  
**MTBF (demonstrated):** 70,000 hrs (excluded backlight)

## Sustainability

**Environmental and energy:** RoHS, Energy Star, EPEAT\*  
**Post consumer recycled plastic:** 85%  
**Recyclable packaging material:** 100 %  
**Specific Substances:** PVC / BFR free housing

## Compliance and standards

**Regulatory Approvals:** CB, CE Mark, ETL, TUV/GS, TUV Ergo, TCO Certified, TCO Certified Edge, EAC, EAC ROHS, MEPS, PSB, UKCA, EMF, FCC, ICES-003, TÜV Rheinland Low Blue Light (Hardware Solution), eyesafe® CERTIFIED 2.0

## Cabinet

**Finish:** Texture  
**Foot:** Black  
**Front bezel:** Black  
**Rear cover:** Black



\* "IPS" word mark / trademark and related patents on technologies belong to their respective owners.

\* Response time value equal to SmartResponse

\* sRGB area based on CIE 1931, NTSC area based on CIE 1976

\* EPEAT rating is valid only where Philips registers the product. Please visit <https://www.epeat.net/> for registration status in your country.

\* This monitor supports Smart Link Sync only when used as a secondary monitor in a daisy-chain configuration, connected to a primary monitor that also supports Smart Link Sync.

\* The products and accessories listed on this leaflet may differ by country and region.

\* The monitor may look different from feature images.