

# PHILIPS

LCD monitor with  
USB-C

Business Monitor

3000 series

24 (23.8" / 60.47 cm diag.)

1920 x 1080 (Full HD)

24B2U3301H



## Redefining workflow productivity

Speed through daily tasks in comfort with this monitor's SoftBlue technology, Full HD resolution, and 120Hz refresh rate. Not to mention, SmartErgoBase adds an ergonomic touch to the monitor's feature list.

### Designed for the way you work

- Built-in stereo speakers for multimedia
- Smart Link Sync: for uniform daisy-chained displays
- SmartErgoBase enables people-friendly ergonomic adjustments
- Windows Hello Compatible – Seamless, Secure Access
- D-Mode: Optimized for subtle grayscale perception
- Eyesafe certified blue light protection and color accuracy
- SoftBlue Technology: for comfortable viewing

### Single cable USB-C connection

- RJ-45 to USB-C gives easy network connection with security
- USB 3.2 high speed data transfer

### Superb Picture Quality

- 120Hz refresh rates for ultra-smooth images
- 16:9 Full HD display for crisp detailed images
- IPS LED wide view technology for image and color accuracy

## Highlights

### IPS technology



IPS displays use an advanced technology which gives you extra wide viewing angles of 178/178 degree, making it possible to view the display from almost any angle. Unlike standard TN panels, IPS displays gives you remarkably crisp images with vivid colors, making it ideal not only for Photos, movies and web browsing, but also for professional applications which demand color accuracy and consistent brightness at all times.

### 16:9 Full HD display



Picture quality matters. Regular displays deliver quality, but you expect more. This display features enhanced Full HD 1920 x 1080 resolution. With Full HD for crisp detail paired with high brightness, incredible contrast and realistic colors expect a true to life picture.

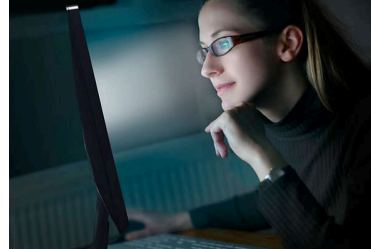
### 120Hz Fast refresh



The smoother the motion, the less strain on your eyes. This Philips monitor is equipped with an improved 120Hz refresh rate. Whenever you scroll, switch between applications, or navigate complex spreadsheets, you experience smoother and more precise movements. That means you

can work as long as you need with minimal visual fatigue—all while increasing the speed of your workflow.

### SoftBlue Technology with Low Blue Light Panel



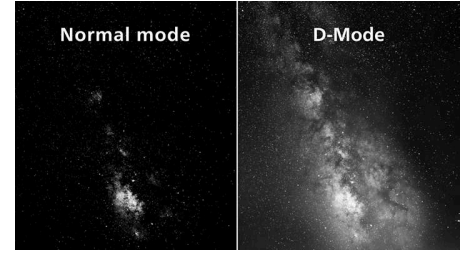
SoftBlue technology offers increased visual comfort and protection against adverse health effects caused by prolonged exposure to blue light. With the low blue-light panel, the ratio of display emission light in the range of 415-455 nm to 400-500nm is reduced to less than 50%. As a result, the SoftBlue technology provides optimal visual comfort, minimizes eye strain, and supports sustained focus. Not to mention, SoftBlue LED technology is tested and TÜV Rheinland Low Blue Light (Hardware Solution) certified for its effectiveness in reducing blue light emissions.

### Built-in stereo speakers



A pair of high quality stereo speakers built into a display device. It can be visible front firing, or invisible down firing, top firing, rear firing, etc depending on model and design.

### D-Mode



Reveal every hidden detail in the dark-toned areas of your display. D-Mode enhances grayscale detail to make subtle tonal differences easier to see. Based on the grayscale perception model defined by the DICOM Part 14 GSDF standard, it improves the visibility of details that standard display settings may miss. The result is clearer differentiation between subtle shades and improved detail visibility in grayscale content such as technical illustrations, scans, and other high-detail imagery.

### Windows Hello Compatible



Log in faster and more securely with Windows Hello. The webcam on this Philips monitor is compatible with Windows Hello, offering quick facial recognition and effortless access - every time you power on.

### eyesafe® CERTIFIED 2.0 (RPF 50)



The Philips display meets the eyesafe® CERTIFIED 2.0 standard to truly protect you from the long exposure to blue light. The always-on blue light filter not only helps reduce digital eye strain, but also guarantees color integrity.



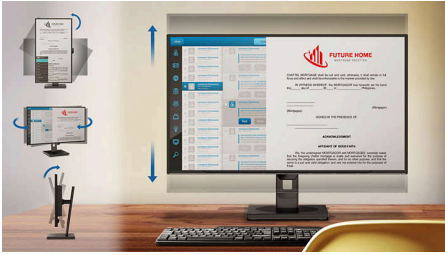
# Business Monitor

LCD monitor with USB-C

24B2U3301H/75

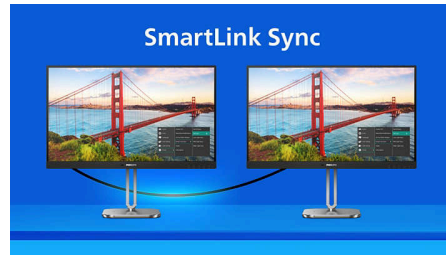
## Highlights

### SmartErgoBase



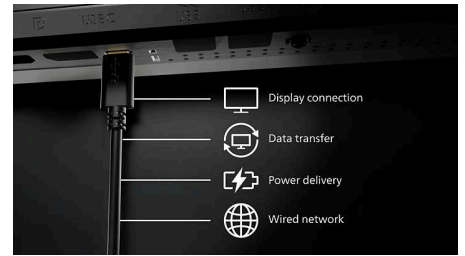
The SmartErgoBase is a monitor base that delivers ergonomic display comfort and provides cable management. The base can swivel, tilt and rotate to various angles to ensure maximum comfort. The height adjustable stand guarantees the optimal viewing level, reducing the physical strains of a long workday, while cable management reduces cable clutter and keeps the workspace neat and professional.

### Smart Link Sync



Easily create a seamless multi-monitor workspace with Smart Link Sync, designed to automatically align display settings across daisy-chained monitors. Whether you're designing, presenting, or multitasking, enjoy consistent brightness and color without manual tweaks. Choose from OSD Sync or Light Sync modes (Low, Mid, or High) on the primary monitor to match your environment. For identical monitors, any mode ensures uniform visuals; for mixed models, Light Sync intelligently adjusts luminance for a balanced, professional look across screens.

### USB-C Docking with RJ45



Simplify all peripherals from monitor to PC using one-cable-docking USB Type-C connector, includes networking, high resolution video output from PC to monitor, and surfing on Internet without an additional network cable, even without LAN port on your notebook. RJ45 connection through USB-C offers a fast and secure connection when needed. Getting the fastest data speeds allows you to transfer data from a HDD to your PC faster than ever. Additionally, USB-C with power delivery can even enable you to power and charge your notebook from the monitor, eliminating the need for extra power cables.

### High speed data transfer

USB 3.2 high speed data transfer

## Specifications

### Picture/Display

**Panel Size:** 23.8 inch/60.47 cm  
**Aspect ratio:** 16:9  
**LCD panel type:** IPS technology  
**Backlight type:** W-LED system  
**Pixel pitch:** 0.2745(H)mm x 0.2745(V)mm  
**Optimum resolution:** 1920x1080@60Hz  
**Brightness:** 350 cd/m<sup>2</sup>  
**Display colors:** 16.7M (8 bit)  
**Color gamut (typical):** sRGB 110% , NTSC 96% \*  
**Contrast ratio (typical):** 1500:1  
**SmartContrast:** 50,000,000:1  
**Response time (typical):** 4 ms (Gray to Gray)\*  
**Viewing angle:** 178° (H) / 178° (V), @ C/R > 10  
**Picture enhancement:** SmartImage  
**Maximum resolution:** 1920x1080@120Hz  
**Effective viewing area:** 527.04(H)x296.46(V) mm  
**Scanning Frequency:** 30k-140 kHz (H) / 48-120 Hz (V)  
sRGB  
SoftBlue  
Flicker-free  
Pixel Density: 93 PPI  
**Display Screen Coating:** Anti-Glare, 3H, Haze 25%  
EasyRead  
Adaptive sync (VRR)  
EyeSafe  
**Smart Link Sync:** When used as a primary or secondary monitor\*  
DICOM (D-mode)

### Connectivity

**Signal Input:** HDMI 1.4 x 1, DisplayPort 1.4 x 1, USB-C x 1 (upstream, DP Alt mode, Data, PD)  
**Sync Input:** Separate Sync, Sync on Green  
**Audio (In/Out):** Audio out  
**RJ45:** Ethernet LAN (USB 2.0: 10M/100M; USB 3.0: 1000M), PXE/MAPT/WOL\*  
**Signal Output:** DP out  
**HDCP:** HDCP 1.4 (HDMI / DisplayPort / USB-C)  
**HBR3:** Yes (DP,USB-C)  
**USB Hub:** USB3.2, Gen1, 5G, upstream: 1x USB-C1 (Full), downstream: USB3.2 x3 (with x1 fast charge B.C 1.2), USB-C2 x1 (data, 15W)

### Power Delivery

**Max power delivery:** Up to 90W (5V/3A, 7V/3A, 9V/3A, 10V/3A, 12V/3A, 15V/3A, 20V/3.25A, 20V/4.5A)  
**Version:** USB PD version 3.0

### Convenience

**Built-in Speakers:** 2W x 2  
**Plug & Play Compatibility:** DDC/CI, Mac OS, sRGB, Windows 11 / 10  
**User convenience:** SmartImage, Input, Brightness, Menu, Power On/Off  
**OSD Languages:** Brazil Portuguese, Czech, Dutch, English, French, Finnish, German, Greek, Hungarian, Italian, Japanese, Korean, Portuguese, Polish, Russian, Simplified Chinese, Spanish, Swedish, Traditional Chinese, Turkish, Ukrainian  
**Other convenience:** Kensington lock, VESA mount (100x100mm)  
**Control software:** SmartControl  
**Built-in webcam:** 5.0 megapixel camera with microphone and LED indicator (for Windows Hello)  
**Webcam tilt function:** Yes, -/+30 degree

### Stand

**Height adjustment:** 150 mm  
**Pivot:** -/+90 degree  
**Swivel:** -/+180 degree  
**Tilt:** -5/30 degree

### Power

**ECO mode:** 10.4 W (typ.)  
**Power supply:** Built-in, 100-240VAC, 50-60Hz  
**Off mode:** 0.3 W (typ.)  
**On mode:** 13.53 W (typ.) (EnergyStar test method)  
**Standby mode:** 0.35 W (typ.)  
**Power LED indicator:** Operation - White, Standby mode- White (blinking)  
**Energy Label Class:** C

### Dimensions

**Packaging in mm (WxHxD):** 690 x 385 x 139 mm  
**Product without stand (mm):** 542 x 320 x 48 mm  
**Product with stand(max height):** 542 x 499 x 228 mm

### Weight

**Product with packaging (kg):** 7.94 kg  
**Product with stand (kg):** 5.74 kg  
**Product without stand (kg):** 4.07 kg

### Operating conditions

**Altitude:** Operation: +12,000ft (3,658m), Non-operation: +40,000ft (12,192m)  
**Temperature range (operation):** 0°C to 40 °C  
**Relative humidity:** 20%-80 %  
**Temperature range (storage):** -20°C to 60 °C  
**MTBF (demonstrated):** 70,000 hrs (excluded backlight)

### Sustainability

**Environmental and energy:** Energy Star, EPEAT\*, RoHS  
**Post consumer recycled plastic:** 85%  
**Recyclable packaging material:** 100 %  
**Specific Substances:** PVC / BFR free housing

### Compliance and standards

**Regulatory Approvals:** CB, CE Mark, TUV/GS, TUV Ergo, TCO Certified, TCO Certified Edge, EAC, EAC ROHS, MEPS, UKCA, EMF, FCC, ICES-003, TÜV Rheinland Low Blue Light (Hardware Solution), eyesafe® CERTIFIED 2.0  
**Warranty:** 5 years

### Cabinet

**Finish:** Texture  
**Foot:** Black  
**Front bezel:** Black  
**Rear cover:** Black

### What's in the box?

**Cables:** HDMI cable, DisplayPort cable, USB-C to C cable, Power cable  
**Monitor with stand**  
**User Documentation**

\* "IPS" word mark / trademark and related patents on technologies belong to their respective owners.

\* Response time value equal to SmartResponse

\* sRGB area based on CIE 1931, NTSC area based on CIE 1976

\* EPEAT rating is valid only where Philips registers the product. Please visit <https://www.epeat.net/> for registration status in your country.

\* The 5-year warranty is a voluntary manufacturer's limited warranty. It applies only in the countries listed on this page <https://www.philips.co.uk/c-e/so/monitors/tco-certified-edge>. For consumers, it is provided in addition to, and without affecting, their legal rights under applicable national laws. For non-consumer (business/professional) end users, only the manufacturer's limited warranty terms apply.

\* For Smart Link Sync to function properly, all daisy-chained monitors must be compatible with Smart Link.

\* RJ45 supports PXE (Preboot eXecution Environment), MAC Address Pass-Through (MAPT), and Wake on LAN (WOL) on compatible systems. Support may vary depending on system configuration.

\* The products and accessories listed on this leaflet may differ by country and region.

\* The monitor may look different from feature images.

