

# PHILIPS

## LCD monitor

### Business Monitor

3000 series

27" (68.5 cm)

2560 x 1440 (Quad HD)

27B2N3500JH



## Redefining workflow productivity

Speed through daily tasks in comfort with this monitor's SoftBlue technology and 120Hz refresh rate. Productivity-enhancing features like USB-C and adjustable webcam with Windows Hello deliver the performance and convenience you expect.

### Designed for the way you work

- Built-in stereo speakers for multimedia
- Smart Link Sync: Matches primary display on second screen
- Windows Hello Compatible – Seamless, Secure Access
- Eyesafe certified blue light protection and color accuracy
- Less eye fatigue with Flicker-free technology
- Adjustable Webcam: for video conferencing in comfort.
- SoftBlue Technology: for comfortable viewing

### Easy to experience

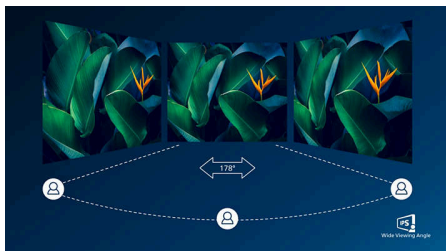
- VESA mount for convenience
- HDMI ensures universal digital connectivity

### Superb Picture Quality

- 120Hz refresh rates for ultra-smooth images
- IPS LED wide view technology for image and color accuracy
- Crystalclear images with Quad HD 2560 x 1440 pixels

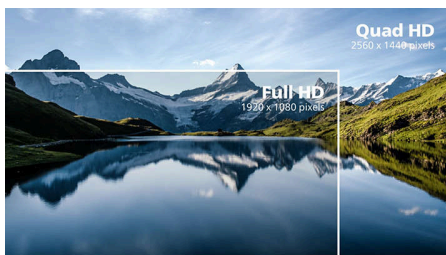
# Highlights

## IPS technology



IPS displays use an advanced technology which gives you extra wide viewing angles of 178/178 degree, making it possible to view the display from almost any angle. Unlike standard TN panels, IPS displays gives you remarkably crisp images with vivid colors, making it ideal not only for Photos, movies and web browsing, but also for professional applications which demand color accuracy and consistent brightness at all times.

## Crystalclear images



These Philips screens deliver Crystalclear, Quad HD 2560x1440 or 2560x1080 pixel images. Utilizing high performance panels with high density pixel count, enabled by high bandwidth sources, these new displays will make your images and graphics come alive. Whether you are demanding professional requiring extremely detailed information for CAD-CAM solutions, using 3D graphic applications or a financial wizard working on huge spreadsheets, Philips displays will give you Crystalclear images.

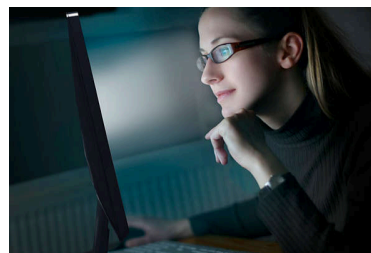
## 120Hz Fast refresh



For gaming and video performance, you demand display with lag free, ultra-smooth images. This Philips display redraws the screen image up-to

120 times per second, much faster than a standard display. A lower frame rate can make enemies appear to jump from spot to spot on the screen, making them difficult targets to hit. With 120Hz frame rate, you get those critical missing images on the screen which shows enemy movement in ultra-smooth motion so you can easily target them.

## SoftBlue Technology with Low Blue Light Panel



SoftBlue technology offers increased visual comfort and protection against adverse health effects caused by prolonged exposure to blue light. With the low blue-light panel, the ratio of display emission light in the range of 415-455 nm to 400-500nm is reduced to less than 50%. As a result, the SoftBlue technology provides optimal visual comfort, minimizes eye strain, and supports sustained focus. Not to mention, SoftBlue LED technology is tested and TÜV Rheinland Low Blue Light (Hardware Solution) certified for its effectiveness in reducing blue light emissions.

## Built-in stereo speakers



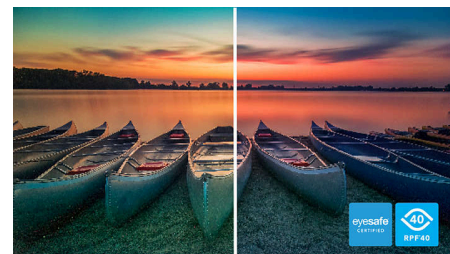
A pair of high quality stereo speakers built into a display device. It can be visible front firing, or invisible down firing, top firing, rear firing, etc depending on model and design.

## Flicker-free technology



Due to the way brightness is controlled on LED-backlit screens, some users experience flicker on their screen which causes eye fatigue. Philips Flicker-free Technology applies a new solution to regulate brightness and reduce flicker for more comfortable viewing.

## eyesafe® CERTIFIED 2.0 (RPF 40)



The Philips display meets the eyesafe® CERTIFIED 2.0 standard to truly protect you from the long exposure to blue light. The always-on blue light filter not only helps reduce digital eye strain, but also guarantees color integrity.

## Smart Link Sync Second Screen Harmony



When connected as a secondary monitor in a daisy-chain setup with a Smart Link Sync enabled primary display, brightness and color settings are automatically synchronized. There is no manual adjustments needed. Whether you're designing, presenting, or multitasking, enjoy seamless visual consistency across screens. Choose from OSD Sync or Light Sync modes (Low, Mid, or High) in the primary monitor to match your environment.



## Highlights

### Adjustable Webcam



Level up the comfort of video conferencing with this feature. By adjusting the webcam back and forth by 30 degrees, users can now comfortably call and attend meetings from any position that best suits them.

### Windows Hello Compatible



Log in faster and more securely with Windows Hello. The webcam on this Philips monitor is compatible with Windows Hello, offering quick facial recognition and effortless access - every time you power on.

### HDMI Ready



An HDMI-ready device has all the required hardware to accept High-Definition Multimedia Interface (HDMI) input. A HDMI cable enables high-quality digital video and audio all transmitted over a single cable from a PC or any number of AV sources (including set-top boxes, DVD players, A/V receivers and video cameras).



Flicker-free

# Specifications

## Picture/Display

**Panel Size:** 27 inch / 68.5 cm  
**Aspect ratio:** 16:9  
**LCD panel type:** IPS technology  
**Backlight type:** W-LED system  
**Pixel pitch:** 0.2331x0.2331mm  
**Brightness:** 350 cd/m<sup>2</sup>  
**Display colors:** 16.7M (true 8 bits)  
**Color gamut (typical):** sRGB 108% , NTSC 97% \*  
**Contrast ratio (typical):** 1500:1  
**SmartContrast:** 50,000,000:1  
**Response time (typical):** 4 ms (Gray to Gray)\*  
**Viewing angle:** 178° (H) / 178° (V), @ C/R > 10  
**Picture enhancement:** SmartImage  
**Maximum resolution:** 2560x1440@120Hz  
**Effective viewing area:** 596.74(H) x 335.66(V) mm  
**Scanning Frequency:** 30-190 KHz (H) / 48 -120 Hz (V)  
**sRGB**  
**SoftBlue**  
**Flicker-free**  
**Pixel Density:** 109 PPI  
**Display Screen Coating:** Anti-Glare, 3H, Haze 25%  
**EasyRead**  
**Adaptive sync**  
**EyeSafe**  
**Smart Link Sync:** When used as a secondary monitor only\*

## Connectivity

**Signal Input:** HDMI 2.1 TMDS x2, DisplayPort 1.2 x 1  
**Sync Input:** Separate Sync, Sync on Green  
**Audio (In/Out):** Audio out  
**HDCP:** HDCP 1.4 (HDMI / DisplayPort ), HDCP 2.3 (HDMI / DisplayPort)  
**USB Hub:** USB3.2, Gen1, 5G, Upstream: USB-B x1; Downstream: USB-A x3 (with x1 fast charge B.C 1.2), USB-C x1 (data, 15W).

## Convenience

**Built-in Speakers:** 2W x 2  
**Plug & Play Compatibility:** DDC/CI, Mac OS, sRGB, Windows 11 / 10  
**User convenience:** SmartImage, Input, Brightness, Menu, Power On/Off  
**OSD Languages:** Brazil Portuguese, Czech, Dutch, English, French, Finnish, German, Greek, Hungarian, Italian, Japanese, Korean, Portuguese, Polish, Russian, Simplified Chinese,

Spanish, Swedish, Traditional Chinese, Turkish, Ukrainian  
**Other convenience:** Kensington lock, VESA mount (100x100mm)  
**Control software:** SmartControl  
**Built-in webcam:** 5.0 megapixel camera with microphone and LED indicator (for Windows Hello)  
**Webcam tilt function:** Yes, -/+30 degree

## Stand

**Height adjustment:** 150 mm  
**Pivot:** -/+90 degree  
**Swivel:** -/+180 degree  
**Tilt:** -5/30 degree

## Power

**ECO mode:** 16.9 W (typ.)  
**Power supply:** Built-in, 100-240VAC, 50-60Hz  
**Off mode:** 0.3W (typ)  
**On mode:** 18.30 (typ.) (EnergyStar test method)  
**Standby mode:** 0.3W (typ)  
**Power LED indicator:** Operation - White, Standby mode- White (blinking)

## Dimensions

**Packaging in mm (WxHxD):** 730 x 445 x 139 mm  
**Product without stand (mm):** 615 x 361 x 46 mm  
**Product with stand(max height):** 615 x 540 x 229 mm

## Weight

**Product with packaging (kg):** 9.25 kg  
**Product with stand (kg):** 6.36 kg  
**Product without stand (kg):** 4.70 kg

## Operating conditions

**Altitude:** Operation: +12,000ft (3,658m), Non-operation: +40,000ft (12,192m)  
**Temperature range (operation):** 0°C to 40 °C  
**Relative humidity:** 20%-80 %  
**Temperature range (storage):** -20°C to 60 °C  
**MTBF (demonstrated):** 70,000 hrs (excluded backlight)

## Sustainability

**Environmental and energy:** Energy Star, EPEAT\*, RoHS  
**Post consumer recycled plastic:** 85%  
**Recyclable packaging material:** 100 %  
**Specific Substances:** PVC / BFR free housing

## Compliance and standards

**Regulatory Approvals:** CB, CE Mark, TUV/GS, TUV Ergo, TCO Certified, EAC, EAC ROHS, MEPS, BSMI, UKCA, EMF, FCC, TÜV Rheinland Low Blue Light (Hardware Solution), eyesafe® CERTIFIED 2.0

## Cabinet

**Finish:** Texture  
**Foot:** Black  
**Front bezel:** Black  
**Rear cover:** Black



\* "IPS" word mark / trademark and related patents on technologies belong to their respective owners.

\* Response time value equal to SmartResponse

\* sRGB area based on CIE 1931, NTSC area based on CIE 1976

\* EPEAT rating is valid only where Philips registers the product. Please visit <https://www.epeat.net/> for registration status in your country.

\* This monitor supports Smart Link Sync only when used as a secondary monitor in a daisy-chain configuration, connected to a primary monitor that also supports Smart Link Sync.

\* The products and accessories listed on this leaflet may differ by country and region.

\* The monitor may look different from feature images.