



**PHILIPS**

Hair Styling Set

3000 Series

1600W

ThermoProtect attachment

Keratin-infused plates

BHP398/00

## Styling made easy

The uniquely-designed ThermoProtect attachment powerfully mixes warm and cool air for everyday care.

### Easy to use

- Foldable handle for easy storage
- 3 heat and speed settings
- Fast heat up time, ready to use in 60 seconds
- Cool Tip to easily create curls and waves
- A useful swivel cord rotates and prevents tangled wires
- Slim nozzle for touch-ups and detailed styling

### Beautifully styled hair

- Keratin infusion for better care
- 210°C professional temperature for perfect salon results

### Care and protect

- ThermoProtect attachment

### Powerful drying

- 1600W of drying power
- Cool air setting to finish your style

## 3000 Series

Hair Styling Set

BHP398/00

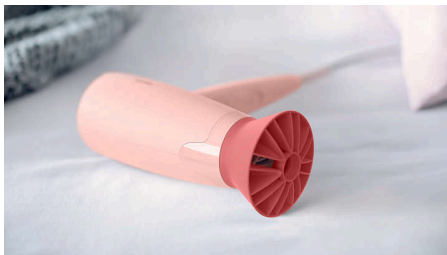
# Highlights

### 1600W of drying power



This 1600W hair dryer creates the optimum level of airflow, for beautiful results every day.

### ThermoProtect attachment



The uniquely-designed ThermoProtect attachment powerfully mixes warm and cool air for everyday care. It drops the temperature by 15°C while still drying your hair quickly.

### Foldable handle



The compact design with foldable handle makes it easy to pack, store and take the hair dryer with you anywhere you go.

### 3 heat and speed settings



This hairdryer offers 3 preselected heat/speed combinations, making it quick and easy to achieve the perfect style.

### Cool air setting



The cool air setting provides a burst of cold air to finish and hold your style.

### 14 mm styling nozzle



The slim nozzle precisely focuses the air, for quick touch-ups and perfecting small details of your style.

### Keratin infusion



Keratin is the hair's essential ingredient which makes them strong, healthy and gorgeous looking. The ceramic is enriched with keratin to even better take care of your hair.

### 210°C styling temperature



This styling temperature enables you change the shape of your hair, and gives you that perfect look like you've just come from the salon.

### Rapid heat-up



The straightener has a fast heat-up time, being ready to use in 60 seconds.

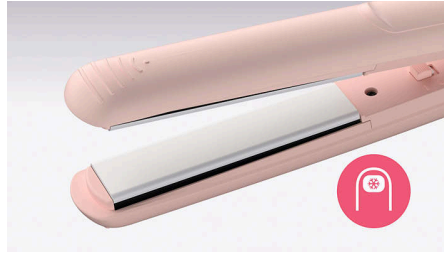
## 3000 Series

Hair Styling Set

BHP398/00

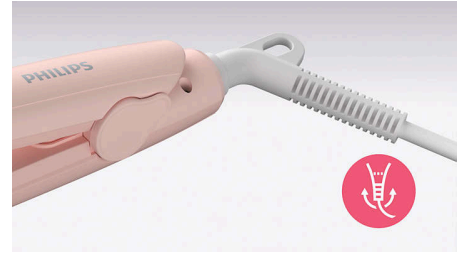
# Highlights

### Cool Tip



The tip of the styler is made from a special heat insulating material to keep it cool. You can safely hold it while you're curling to create beautiful curls, waves and bouncy styles.

### Swivel cord



The swivel cord technology conveniently rotates the cord and prevents unnecessary tangles.

## 3000 Series

Hair Styling Set

BHP398/00

# Specifications

### Attachments

Nozzle: 14 mm

ThermoProtect attachment

### Hair Dryer

Foldable handle

Hanging loop

Cord length: 1.8 m

Settings: Cool air setting

Heat/speed settings: 3

Wattage: 1600 W

Motor: DC

Voltage: 220-240 V

### Straightener

Material plates: Keratin-infused ceramic plates

Cord length: 1.6 m

Heat-up time: 60 s

Swivel cord

Wattage: 31-33 W

Plate size: 19x85 mm

Voltage: 110-240 V

### Service

2-year worldwide warranty

### Caring technologies

ThermoProtect

