

PHILIPS

LCD monitor with
USB-C

Business Monitor

3000 series

27" (68.5 cm)

2560 x 1440 (Quad HD)

27B2U3601H



Redefining workflow productivity

with a pop-up webcam

Speed through daily tasks in comfort with this monitor's SoftBlue technology and 120 Hz refresh rate. Productivity-enhancing features like USB-C and pop-up webcam with Windows Hello deliver the performance and convenience you expect.

Excellent performance

- IPS technology for full colours and wide viewing angles

Designed for the way you work

- Built-in stereo speakers for multimedia
- SmartErgoBase enables user-friendly ergonomic adjustments
- Smart Link Sync: for uniform daisy-chained displays
- Windows Hello Compatible – Seamless, Secure Access
- Eyesafe-certified blue light protection and colour accuracy
- D-Mode: Optimised for subtle greyscale perception
- Adjustable Webcam: for video conferencing in comfort.
- SoftBlue Technology: for comfortable viewing

Single cable USB-C connection

- RJ-45 to USB-C gives easy network connection with security

Superb Picture Quality

- 120 Hz refresh rates for ultra-smooth images

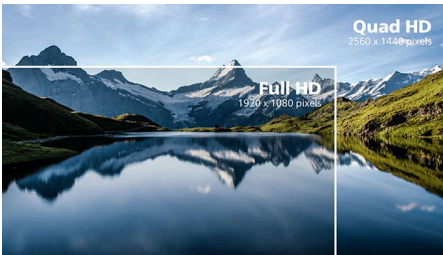
Highlights

IPS technology



IPS displays use advanced technology that gives you extra-wide viewing angles of 178/178 degrees, making it possible to view the display from almost any angle — even in 90-degree Pivot mode! Unlike standard TN panels, IPS displays gives you remarkably crisp images with vivid colours, making it ideal not only for Photos, films and web browsing, but also for professional applications that demand colour accuracy and consistent brightness at all times.

CrystalClear images



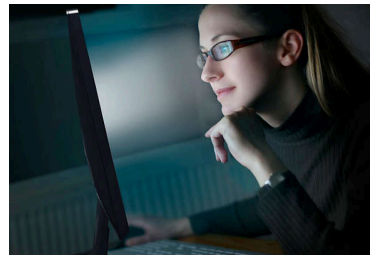
These Philips screens deliver CrystalClear, Quad HD 2560 x 1440 or 2560 x 1080 pixel images. Utilising high performance panels with a high-density pixel count enabled by high bandwidth sources, these new displays will make your images and graphics come alive. Whether you are a demanding professional requiring extremely detailed information for CAD-CAM solutions using 3D graphic applications, or a financial wizard working on huge spreadsheets, Philips displays will give you CrystalClear images.

120 Hz fast refresh



The smoother the motion, the less strain on your eyes. This Philips monitor is equipped with an improved 120 Hz refresh rate. Whenever you scroll, switch between applications or navigate complex spreadsheets, you experience smoother and more precise movements. That means you can work as long as you need with minimal visual fatigue—all while increasing the speed of your workflow.

SoftBlue Technology with Low Blue Light Panel



SoftBlue technology offers increased visual comfort and protection against adverse health effects caused by prolonged exposure to blue light. With the low blue-light panel, the ratio of display emission light in the range of 415-455 nm to 400-500 nm is reduced to less than 50%. As a result, the SoftBlue technology provides optimal visual comfort, minimises eye strain and supports sustained focus. Not to mention, SoftBlue LED technology is tested and TÜV Rheinland Low Blue Light (Hardware Solution) certified for its effectiveness in reducing blue light emissions.

Built-in stereo speakers



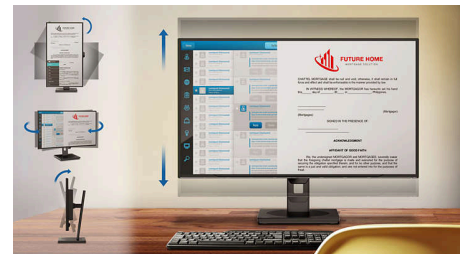
A pair of high-quality stereo speakers built into a display device. They may be visible front firing, or invisible down firing, top firing, rear firing etc. depending on model and design.

eyesafe® CERTIFIED 2.0 (RPF 40)



The Philips display meets the eyesafe® CERTIFIED 2.0 standard to truly protect you from long exposure to blue light. The always-on blue light filter not only helps reduce digital eye strain, but also guarantees colour integrity.

SmartErgoBase

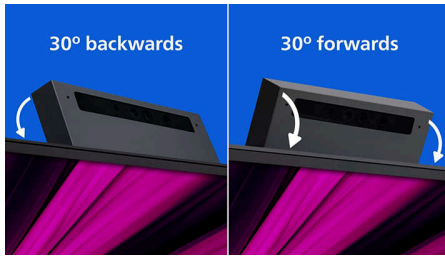


The SmartErgoBase is a monitor base that delivers ergonomic display comfort and provides cable management. The base can swivel, tilt and rotate to various angles to ensure maximum comfort. The height-adjustable stand guarantees the optimal viewing level, reducing the physical strains of a long workday, while cable management reduces cable clutter and keeps the workspace neat and professional.



Highlights

Adjustable webcam



Level up the comfort of video conferencing with this feature. By adjusting the webcam back and forth by 30 degrees, users can now comfortably call and attend meetings from any position that best suits them.

Windows Hello Compatible



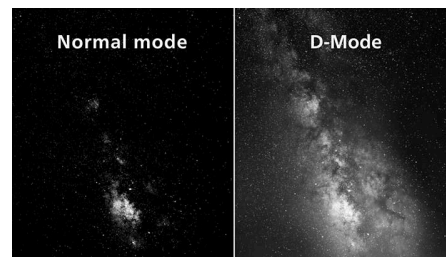
Log in faster and more securely with Windows Hello. The webcam on this Philips monitor is compatible with Windows Hello, offering quick facial recognition and effortless access - every time you power on.

Smart Link Sync



Easily create a seamless multi-monitor workspace with Smart Link Sync, designed to automatically align display settings across daisy-chained monitors. Whether you're designing, presenting or multitasking, enjoy consistent brightness and colour without manual tweaks. Choose from OSD Sync or Light Sync modes (Low, Mid or High) on the primary monitor to match your environment. For identical monitors, any mode ensures uniform visuals; for mixed models, Light Sync intelligently adjusts luminance for a balanced, professional look across screens.

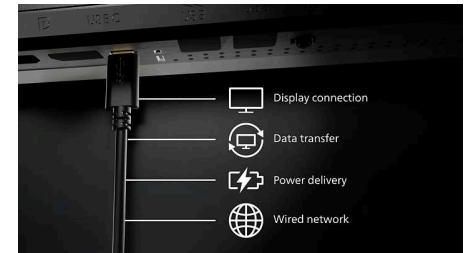
D-Mode



Reveal every hidden detail in the dark-toned areas of your display. D-Mode enhances greyscale detail to make subtle tonal differences

easier to see. Based on the greyscale perception model defined by the DICOM Part 14 GSDF standard, it improves the visibility of details that standard display settings may miss. The result is clearer differentiation between subtle shades and improved detail visibility in greyscale content such as technical illustrations, scans and other high-detail imagery.

USB-C Docking with RJ45



Simplify all peripherals from monitor to PC using one-cable docking USB Type-C connector, including networking, high-resolution video output from PC to monitor, and surfing on the Internet without an additional network cable, even without a LAN port on your notebook. RJ45 connection through USB-C offers a fast and secure connection when needed. Getting the fastest data speeds allows you to transfer data from a HDD to your PC faster than ever. Additionally, USB-C with power delivery can even enable you to power and charge your notebook from the monitor, eliminating the need for extra power cables.



Business Monitor

LCD monitor with USB-C

27B2U3601H/00

Specifications

Picture/Display

Panel Size: 27 inch/68.5 cm
Aspect ratio: 16:9
LCD panel type: IPS technology
Backlight type: W-LED system
Pixel pitch: 0.2331 x 0.2331 mm
Brightness: 350 cd/m²
Display colours: 16.7 M (true 8 bits)
Colour gamut (typical): sRGB 108%, NTSC 97% *
Contrast ratio (typical): 1500:1
SmartContrast: 50,000,000:1
Response time (typical): 4 ms (Grey to Grey)*
Viewing angle: 178° (H)/178° (V), @ C/R > 10
Picture enhancement: SmartImage
Maximum resolution: 2560 x 1440 @ 120 Hz (HDMI/DP/USBC)*
Effective viewing area: 596.74 (H) x 335.66 (V) mm
Scanning Frequency: 30-230 KHz (H)/48-120 Hz (V)
sRGB
SoftBlue
Flicker-free
Pixel Density: 109 PPI
Display Screen Coating: Anti-Glare, 3H, Haze 25%
EasyRead
Adaptive sync (VRR)
EyeSafe
Smart Link Sync: When used as a primary or secondary monitor*
DICOM (D-mode)

Connectivity

Signal Input: HDMI 2.1 TMDS x 1, DisplayPort 1.4 x 1, USB-C x 1 (upstream, DP Alt mode, Data, PD)
Sync Input: Separate Sync, Sync on Green
Audio (In/Out): Audio out
RJ45: Ethernet LAN (USB 2.0: 10M/100M; USB 3.0: 1000M), PXE/MAPT/WOL*
Signal Output: DisplayPort Out
HDCP: HDCP 1.4 (HDMI/DisplayPort/USB-C), HDCP 2.3 (HDMI/DisplayPort/USB-C)
HBR3: Yes (DP, USB-C)
USB Hub: USB3.2, Gen1, 5G, Upstream: USB-C x 1 (Full); Downstream: USB3.2 x 3 (with x 1 fast charge B.C 1.2), USB-C x 1 (Data, 15W)

Power Delivery

Max power delivery: up to 90 W (5 V/3 A, 7 V/3 A, 9 V/3 A, 10 V/3 A, 12 V/3 A, 15 V/3 A, 20 V/4.5 A)
Version: USB PD version 3.0

Convenience

Built-in Speakers: 2 W x 2
Plug and Play Compatibility: DDC/CI, Mac OS, sRGB, Windows 11/10
User convenience: SmartImage, Input, Brightness, Menu, Power On/Off
OSD Languages: Brazil Portuguese, Czech, Dutch, English, French, Finnish, German, Greek, Hungarian, Italian, Japanese, Korean, Portuguese, Polish, Russian, Simplified Chinese, Spanish, Swedish, Traditional Chinese, Turkish, Ukrainian

Other convenience: Kensington lock, VESA mount (100 x 100 mm)

Control software: SmartControl

Built-in webcam: 5.0 megapixel camera with microphone and LED indicator (for Windows Hello)

Webcam tilt function: Yes, -/+30 degree

Stand

Height adjustment: 150 mm

Pivot: -/+90 degree

Swivel: -/+ 180 degree

Tilt: -5/30 degree

Power

ECO mode: 16.6 W (typ.)

Power supply: Built-in, 100–240 VAC, 50–60 Hz

Off mode: 0.3 W (typ)

On mode: 21.12 W (typ.) (Energy Star test method)

Standby mode: 0.4 W (typ.)

Power LED indicator: Operation - White, Standby mode - White (flashing)

Energy Label Class: D

Dimensions

Packaging in mm (W x H x D):

730 x 445 x 139 mm

Product without stand (mm): 615 x 361 x 46 mm

Product with stand (max height):

615 x 540 x 299 mm

Specifications

Weight

Product with packaging (kg): 9.55 kg

Product with stand (kg): 6.57 kg

Product without stand (kg): 4.90 kg

Operating conditions

Altitude: Operation: +12,000 ft (3658 m), Non-operation: +40,000 ft (12,192 m)

Temperature range (operation): 0°C to 40 °C

Relative humidity: 20%-80 %

Temperature range (storage): -20°C to 60 °C

MTBF (demonstrated): 70,000 hrs (excluded backlight)

Sustainability

Environmental and energy: Energy Star, EPEAT*, RoHS

Post-consumer recycled plastic: 85%

Recyclable packaging material: 100 %

Specific Substances: PVC/BFR free housing

Compliance and standards

Regulatory Approvals: CB, CE Mark, EPA, TUV/GS, TUV Ergo, TCO Certified, EAC, EAC ROHS, MEPS, UKCA, EMF, FCC, ICES-003, TÜV Rheinland Low Blue Light (Hardware Solution), eyesafe® CERTIFIED 2.0

Warranty: 5 years*

Cabinet

Finish: Texture

Foot: Black

Front bezel: Black

Rear cover: Black

What's in the box?

Cables: HDMI cable, DisplayPort cable, USB-C to C cable, Power cable

Monitor with stand

User Documentation



- * "IPS" word mark / trademark and related patents on technologies belong to their respective owners.
- * Response time value equal to SmartResponse
- * sRGB area based on CIE 1931; NTSC area based on CIE 1976
- * EPEAT rating is valid only where Philips registers the product. Please visit <https://www.epeat.net/> for registration status in your country.
- * The 5 year warranty is a voluntary manufacturer's limited warranty. It applies only in the countries listed on this page <https://www.philips.co.uk/c-e/so/monitors/tco-certified-edge>. For consumers, it is provided in addition to, and without affecting, their legal rights under applicable national laws. For non-consumer (business/professional) end users, only the manufacturer's limited warranty terms apply.
- * USB-C High Resolution mode enables a maximum resolution of 2560 x 1440 at 120 Hz.
- * For Smart Link Sync to function properly, all daisy-chained monitors must be compatible with Smart Link.
- * The monitor may look different from feature images.
- * The products and accessories listed on this leaflet may differ by country and region.
- * RJ45 supports PXE (Preboot eXecution Environment), MAC Address Pass-Through (MAPT) and Wake-on-LAN (WOL) on compatible systems. Support may vary depending on system configuration.
- * The cable(s) supplied with the product may vary in type, quantity and specifications in line with country- or region-specific requirements.