

# PHILIPS



## 16 in 1 trimmer

All-in-One Trimmer 7000  
Series

16in1: face, head & body

Premium precision comb

Self-sharpening steel blades

BeardSense technology



MG7931/30

## One tool, ultimate precision

### For face, hair and body

Our All-in-One trimmer offers the versatility and precision you need with 16 quality tools designed for face, head and body. Self-sharpening blades stay as sharp as day 1 and the premium precision comb helps achieve look and style you want.

#### Precise, even trim

- 16 tools for all your grooming needs
- An even trim at a precise length for your perfect look
- Maximum precision with long-lasting performance

#### Versatile styling for face, head and body

- Trim body hair comfortably, even in sensitive areas
- Powerful trimming even on the most demanding of beards
- Clip your hair, your way
- Get the details right
- Add sharp and even definition to your final look

#### Quality & Ease of use

- For more control and comfort while trimming
- Stay aware for each shave and trim
- Powerful 4 week performance on a single charge\*
- 100% showerproof for convenient grooming, wet or dry

# All-in-One Trimmer 7000 Series

16 in 1 trimmer

MG7931/30

## Highlights

### 16in1 trimmer



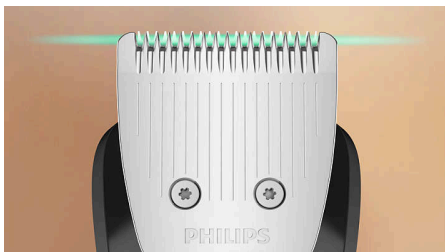
Our trimmer comes with 16 tools so you can trim and style your facial hair, clip your hair, and groom your body, conveniently covering all your grooming needs

### Premium precision comb



Our premium precision comb, with 11 length settings in 0.2 mm steps from 1 to 3 mm, delivers maximum precision to trim to the exact length you want for your perfect look.

### Self-sharpening steel blades



Self-sharpening steel blades deliver added strength for maximum precision as you trim, staying as sharp as day 1 with no blade oil required.

### BeardSense technology



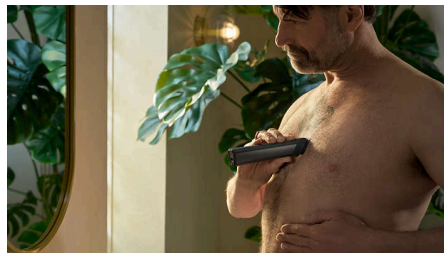
With BeardSense Technology, our trimmer scans your beard density 125x per second to boost power in denser areas, giving you the right power for the best result.

### Precision beard styling



The trimmer's multi-comb set comes with 21 length settings from 0.5mm up to 16mm in precise up to 0.2mm increments, so you can style your beard long or short. The detail trimmer's narrow design also gives added precision to create sharp lines and fine details, while the metal trimmer cleans your cheeks, chin and neck to get your beard exactly how you like it.

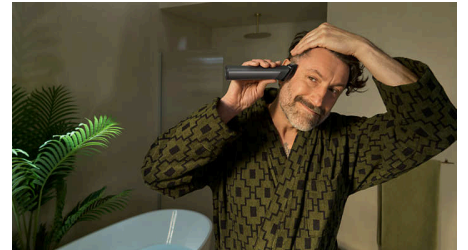
### Comfortable body grooming



Experience a close and comfortable trim below the neck with our innovative new body blade. This specially designed trimmer features

rounded tips that ensure a gentle touch, making it perfect for the most sensitive areas of your body.

### Easy hair clipping



The trimmer's multi-comb system allows you to choose length settings from 0.5mm to 16mm to easily maintain your hairstyle at home.

### Nose/ear/eyebrow trimming



The nose/ear trimmer attachment removes unwanted nose and ear hair quickly and safely. Easily keep your eyebrows neat and tidy with the dedicated eyebrow comb.

### Up to 120 minutes of runtime



Our durable lithium battery delivers up to 120 minutes of runtime with 5-minute quick charge option\*\*, for a powerful, continual trimming experience.

## All-in-One Trimmer 7000 Series

16 in 1 trimmer

MG7931/30

# Highlights

### 100% showerproof



Being 100% showerproof you can use the trimmer both wet and dry for a comfortable, convenient experience, every time. Plus it's easy to clean too.

### Battery life indicator



The battery indicator keeps you fully informed of your battery status, whether it's low, empty, fully charged, or still charging, ensuring you're always ready for your next grooming session.

### Premium ergonomic grip



Our ergonomic grip makes the device easy to hold and manoeuvre, providing you with the superior comfort and control you need to perfect your look.

# All-in-One Trimmer 7000 Series

16 in 1 trimmer

MG7931/30

## Specifications

### Accessories

**Convenience:** Cleaning brush, USB-A (no adapter included)

**Travel and storage:** Simple pouch

### Power

**Battery type:** Lithium Li-Ion

**Run time:** 120 minutes

**Charging:** 60 minutes, USB-A Charging (5 V= /  $\geq 1$  A)

**Battery status:** Charging indicator, Low battery indicator

### Service

**Warranty:** Up to 5 years\*\*\*

### Ease of use

**Wet & Dry:** 100% shower proof

**Travel solution:** Travel lock attachment

### Summary

**Body area:** Face, Hair & Body

**Tools & accessories:** 16

**Length settings:** 0.5 – 16 mm, 21

**Precision steps:** Control up to 0.2mm

### Styling tools

**Specialized:** Metal trimmer, Nose trimmer, Detail trimmer, Body trimmer, Self-sharpening blades, BeardSense technology, Premium precision comb

### Combs

**Adjustable:** 3-7mm, 9-13 mm

**Body:** 3mm, 5mm

**Stubble:** 1mm, 2mm

**Eyebrow:** 6mm

**Premium precision comb:** 1-3 mm

**Body intimate:** 1mm

### Sustainability

**Packaging:** Paper-based packaging

**User manual:** Paper from responsible sources

