

# PHILIPS

## EVNIA



### DUAL resolution gaming monitor

#### Fast IPS Gaming monitor

Evnia 5000

27" (68.5 cm)

5120 x 2880 (5K UHD)

2560 x 1440 (Quad HD)



27M2G5800

## Your gaming experience to the utmost

Unlock next-level gaming with this Evnia monitor's Dual Resolution Mode. Seamlessly switch between 5120 x 2880 @ 165Hz and 2560 x 1440 @ 330Hz with a simple toggle for unmatched versatility and performance.

#### Features designed for gamers needs

- Stark ShadowBoost: for enhancing visibility in dark scenes
- Evnia Precision Center: Maximize Your Gaming Experience
- Smart Sniper: Improved control when you zoom in on targets
- Smart MBR: for reducing motion blur.
- MultiView enables simultaneous dual connection and view
- LowBlue mode and Flicker-free easy-on-the eyes viewing
- Smart Crosshair: for better aim and more fun

#### Built for fast action

- Dual Mode: The flexibility to match your gameplay
- 0.5 ms ultra-fast speed for crisp image and smooth gameplay
- Certified NVIDIA® G-SYNC® compatible for smooth fast gaming
- Low input lag reduces time delay between devices to monitor

#### Immersive visuals

- DisplayHDR 400 for more lifelike and outstanding visuals

# Fast IPS Gaming monitor

DUAL resolution gaming monitor

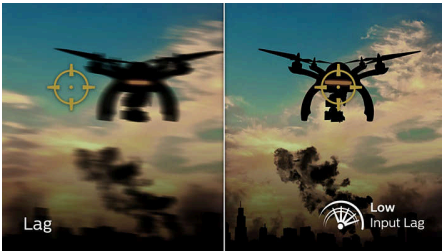
27M2G5800/69

## Highlights

### Dual Mode

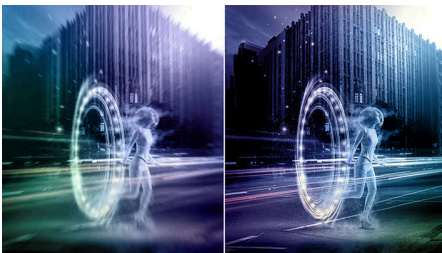
Experience the best of both worlds with Dual Mode. Seamlessly toggle between 5120 x 2880 @ 165Hz for stunning clarity and 2560 x 1440 @ 330Hz for ultra-smooth gameplay. Whether you crave breathtaking visuals or high-speed action, this monitor adapts to your needs in an instant.

### Low input lag



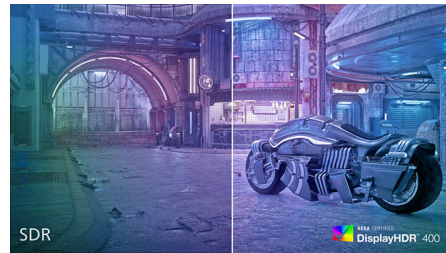
Input lag is the amount of time that elapses between performing an action with connected devices and seeing the result on screen. Low input lag reduces the time delay between entering a command from your devices to monitor, greatly improve on playing twitch-sensitive video games, particularly important to whom plays fast-paced, competitive games.

### 0.5 ms Smart MBR fast response



Philips Evnia with 0.5 ms Smart MBR effectively eliminates smearing and motion blur, delivers sharper and precise visuals to enhance gaming experience. Fast-moving action and dramatic transitions will be rendered smoothly. Best choice for playing thrilling and twitch-sensitive games.

### DisplayHDR 400



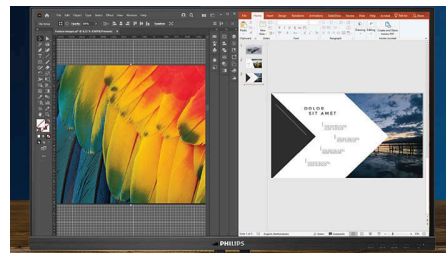
VESA-certified DisplayHDR 400 delivers a significant step-up from normal SDR displays. Unlike, other 'HDR compatible' screens, true DisplayHDR 400 produces astonishing brightness, contrast and colors. With global dimming and minimum 400 nits brightness, images come to life with notable highlights while featuring deeper, more nuanced blacks. It renders a fuller palette of rich new colors, delivering a visual experience that engages your senses.

### LowBlue mode & Flicker-free



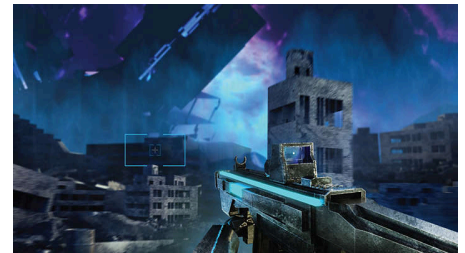
Our LowBlue Mode and Flicker-free technology have been developed to reduce eye strain and fatigue often caused by long hours in front of a monitor.

### MultiView technology



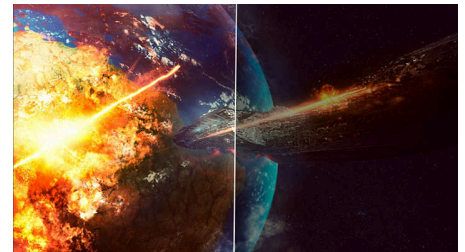
With the ultra-high resolution Philips MultiView display you can now experience a world of connectivity. MultiView enables active dual connect and view so that you can work with multiple devices like a PC and notebook simultaneously, for complex multi-tasking.

### Smart Crosshair



Color of Crosshair is set by default. When Smart Crosshair is on, the color will change as complementary color to the background color. Smart Crosshair enhances the accuracy of aiming so you can spot the enemies more easily.

### Stark ShadowBoost



This feature enhances dark scenes without overexposing lightened areas. The Stark Shadowboost feature has three selectable levels that offer textured images with better color saturation with higher contrast so you can see better in both light and dark environments. In addition, this feature helps you fine-tune your sight so that enemies get exposed more quickly when gaming.

### Smart MBR



In an effort to reduce motion blur, this monitor's LED backlight will work simultaneously with the refresh rate to control brightness levels for the best picture clarity. Please note that Smart MBR is a type of gaming mode and it is recommended to turn the function off when not gaming as it may cause screen-flickering.



Low Input Lag



Fast Response  
0.5ms



VESA CERTIFIED  
DisplayHDR 400



LowBlue Mode



Multiview



NVIDIA  
G-SYNC

## Fast IPS Gaming monitor

DUAL resolution gaming monitor

27M2G5800/69

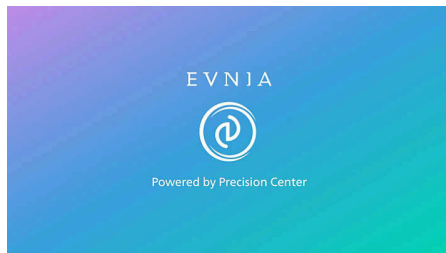
# Highlights

### Smart Sniper



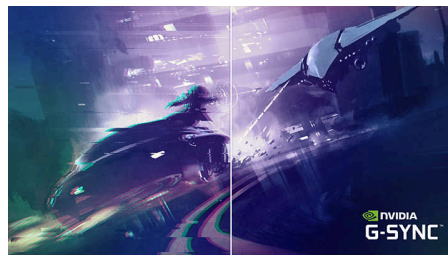
Smart Sniper gives you better control over your scope for precise aiming. It overlays an additional window at either the top or center of your screen, and enables you to select a zoom level up to 2.0x your normal magnification.

### Evnia Precision Center



Evnia Precision Center is an easy-to-use software designed to optimize and personalize your Evnia monitor. Whether you're a casual or competitive gamer, it offers a wide range of customization options to match your unique gaming style. With intuitive controls and seamless navigation, Evnia Precision Center gives you full control, providing everything you need to elevate your gaming to the next level — right at your fingertips.

### NVIDIA® G-SYNC® compatible



When playing intense games with high refresh rates, screen tearing may appear without optimal graphics synchronization. This Philips display is certified as NVIDIA® G-SYNC® compatible, reducing screen tearing and syncing your monitor's refresh rate with your graphic card's output for a smoother gaming experience. Scenes appear instantly, objects look sharper, and gameplay is smooth, giving you a stunning visual experience and a serious competitive edge.



# Fast IPS Gaming monitor

DUAL resolution gaming monitor

27M2G5800/69

## Specifications

### Picture/Display

**Panel Size:** 27 inch / 68.5 cm  
**Aspect ratio:** 16:9  
**LCD panel type:** Fast IPS  
**Backlight type:** W-LED system  
**Pixel pitch:** 0.11655 x 0.11655mm  
**Brightness:** 500nits cd/m<sup>2</sup>  
**Brightness uniformity:** 93~105%  
**Display colors:** 1.07B (8bits+FRC)  
8bits @5K 180Hz / QHD 330Hz;  
10bits @5K 144Hz / QHD 288Hz  
**Color gamut (typical):** Adobe RGB 95%; DCI-P3:98%,sRGB: 137%, NTSC 111% \*  
**Contrast ratio (typical):** 1000:1  
**SmartContrast:** Infinite  
**Response time (typical):** 1ms (Gray to Gray)\*  
**Viewing angle:** 178° (H) / 178° (V), @ C/R > 10  
**Picture enhancement:** SmartImage game  
**Maximum resolution:** 5120x2880 @ 165 Hz (HDMI/DP),2560x1440 @ 330 Hz (HDMI/DP)  
**Effective viewing area:**  
596.736(H)x335.664(V)mm  
**Scanning Frequency:** 5K: 30-490kHz(H) / 48-165Hz (V) / 48-180Hz (V) Overclock ; QHD: 30-490kHz(H) / 48-330Hz(V)  
**sRGB**  
**Delta E:** <1  
**Flicker-free**  
**Pixel Density:** 217.57 PPI  
**LowBlue Mode**  
**Display Screen Coating:** Anti-Glare, 3H, Haze 25%  
**SmartUniformity:** 93~105%  
**Low Input Lag**  
**EasyRead**  
**Adaptive sync**  
**G-SYNC**  
**HDR:** DisplayHDR 400 certified  
**Smart MBR:** 0.5ms\*  
**Smart Sniper**  
**Shadow Boost**  
**Smart MBR Sync**  
**Stark Shadow Boost**  
**Smart MBR:** 0.5ms\*  
**Smart Crosshair**  
**SoftBlue technology:** Yes\*

### Connectivity

**Signal Input:** HDMI 2.1 x2, DP 2.1 x1  
**Audio (In/Out):** Headphone out  
**HDCP:** HDCP 1.4 (HDMI / DP), HDCP 2.3 (HDMI / DP)  
**USB Hub:** USB3.2, Gen1, 5G, Upstream: USB-B x1, Downstream: USB-A x2 (with x1 FC)

### Convenience

**Plug & Play Compatibility:** DDC/CI, Mac OS X, sRGB, Windows 11 / 10  
**User convenience:** Power On/Off, Menu/OK, Input/Up, Dual mode/Down, SmartImage game/Back  
**OSD Languages:** Brazil Portuguese, Czech, Dutch, English, Finnish, French, German, Greek, Hungarian, Italian, Japanese, Korean, Polish, Portuguese, Russian, Spanish, Simplified Chinese, Swedish, Turkish, Traditional Chinese, Ukrainian  
**Other convenience:** Kensington lock, VESA mount (100x100mm), LowBlue Mode  
**Control software:** Evnia Precision Center  
**MultiView**

### Stand

**Height adjustment:** 130 mm  
**Pivot:** -/+ 90 degree  
**Swivel:** -/+ 30 degree  
**Tilt:** -5/20 degree

### Power

**Power supply:** 100-240VAC, 50-60Hz, Internal  
**Off mode:** 0.3 W (typ.)  
**On mode:** 37.2 W (typ.)  
**Standby mode:** 0.5 W (typ.)  
**Power LED indicator:** Operation - White, Standby mode- White (blinking)

### Dimensions

**Packaging in mm (WxHxD):** 730 x 455 x 139 mm  
**Product without stand (mm):** 614 x 368 x 61 mm  
**Product with stand(max height):** 614 x 519 x 261 mm

### Weight

**Product with packaging (kg):** 6.68 kg  
**Product with stand (kg):** 5.85 kg  
**Product without stand (kg):** 4.43 kg

### Operating conditions

**Altitude:** Operation: +12,000ft (3,658m), Non-operation: +40,000ft (12,192m)  
**Temperature range (operation):** 0°C to 40 °C  
**MTBF:** 50,000 (Excluded backlight) hour(s)  
**Relative humidity:** 20%-80 %  
**Temperature range (storage):** -20°C to 60 °C

### Sustainability

**Environmental and energy:** RoHS  
**Recyclable packaging material:** 100 %  
**Specific Substances:** PVC / BFR free housing  
**Post consumer recycled plastics:** 85%\*

### Compliance and standards

**Regulatory Approvals:** CB, CE Mark, PSB, CEL, CCC, CECP, UKCA, EMF, FCC, ICES-003

### Cabinet

**Color:** Dark Slate  
**Finish:** Textured



\* "IPS" word mark / trademark and related patents on technologies belong to their respective owners.  
\* For best output performance, please always ensure that your graphic card is capable of achieving the maximum resolution and refresh rate of this Philips display.  
\* Response time value equal to SmartResponse  
\* Smart MBR is to adjust brightness for blur reduction, so cannot adjust brightness while smart MBR is turned on. To reduce motion blur, LED backlight will strobe synchronously with screen refresh, which may cause noticeable brightness change.  
\* Smart MBR is gaming-optimized mode. Turn on Smart MBR may cause noticeable screen flickering. It is recommended to turn off when you are not using the gaming function.  
\* Adobe RGB and DCI-P3 Coverage based on CIE1976, sRGB Area based on CIE1931, NTSC Area based on CIE1976.  
\* NVIDIA® G-SYNC® support interface: DisplayPort  
\* Make sure to update NVIDIA® G-SYNC® driver to the latest version, see more information on NVIDIA website: <https://www.nvidia.com/>  
\* Make sure your graphic card supports NVIDIA® G-SYNC®  
\* This monitor strives for sustainability: the stand's feet are made with 35% recycled plastic and monitor's chassis is made up of 85% post-consumer recycled plastic.  
\* The monitor may look different from feature images.  
\* The products and accessories listed on this leaflet may differ by country and region.