

# PHILIPS

## EVNIA



DUAL resolution  
gaming monitor

Fast IPS Gaming monitor

Evnia 5000

27" (68.5 cm)

2560 x 1440 (Quad HD)

1280x 720 (HD)



27M2N5500XD

## Your gaming experience to the utmost

Unlock next-level gaming with this Evnia monitor's Dual Resolution Mode. Seamlessly switch between 1280 x 720 @ 1000Hz and 2560 x 1440 @ 540Hz (Overclock) with a simple toggle for unmatched versatility and performance.

### Features designed for gamers needs

- Stark ShadowBoost: for enhancing visibility in dark scenes
- Smart Sniper: Improved control when you zoom in on targets
- Evnia Precision Center: Maximize Your Gaming Experience
- LowBlue mode and Flicker-free easy-on-the eyes viewing
- Smart Crosshair: for better aim and more fun

### Built for fast action

- Dual Mode: The flexibility to match your gameplay
- 0.3 ms ultra-fast speed for crisp image and smooth gameplay
- Low input lag reduces time delay between devices to monitor

### Immersive visuals

- SmartContrast for rich black details
- 1.07 billion colors for stunning color and finest gradations
- DisplayHDR 400 for more lifelike and outstanding visuals

# Fast IPS Gaming monitor

DUAL resolution gaming monitor

27M2N5500XD/93

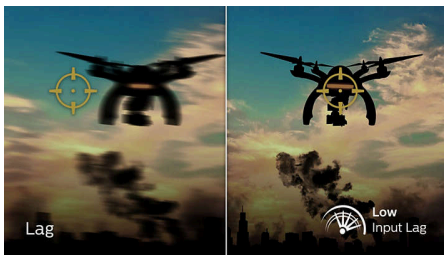
## Highlights

### Dual Mode



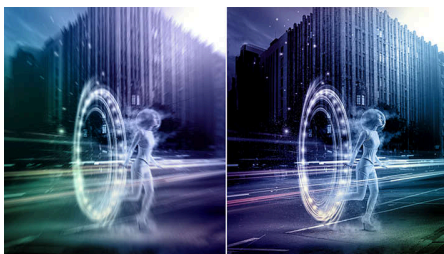
Experience a display that delivers ultra-fast speeds and precision in every moment – all while preserving high-definition visuals. Seamlessly toggle between two high performance settings that push the limits of speed: 2560 x 1440 (QHD) @540 Hz (Overclock) for stunning visual detail and fluid motion, and 1280 x 720 (HD) @ 1000Hz for lightning-fast reaction time. Designed for serious gamers, Dual Mode gives you the flexibility to switch your display in an instant so you can perform at your best in any scenario.

### Low input lag



Input lag is the amount of time that elapses between performing an action with connected devices and seeing the result on screen. Low input lag reduces the time delay between entering a command from your devices to monitor, greatly improve on playing twitch-sensitive video games, particularly important to whom plays fast-paced, competitive games.

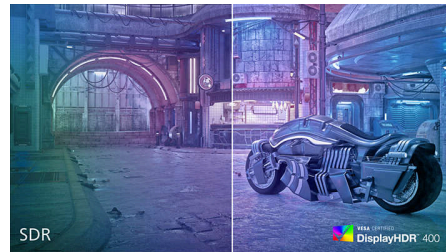
### 0.3 ms Smart MBR fast response



Philips display with 0.3 ms Smart MBR effectively eliminates smearing and motion blur, delivers sharper and precise visuals to enhance gaming

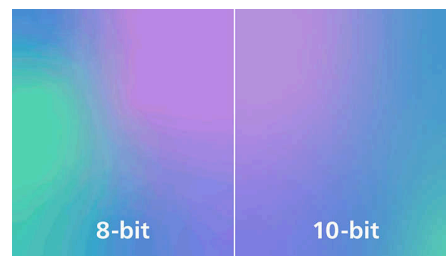
experience. Fast-moving action and dramatic transitions will be rendered smoothly. Best choice for playing thrilling and twitch-sensitive games.

### DisplayHDR 400



VESA-certified DisplayHDR 400 delivers a significant step-up from normal SDR displays. Unlike, other 'HDR compatible' screens, true DisplayHDR 400 produces astonishing brightness, contrast and colors. With global dimming and minimum 400 nits brightness, images come to life with notable highlights while featuring deeper, more nuanced blacks. It renders a fuller palette of rich new colors, delivering a visual experience that engages your senses.

### 1.07 billion colors



This display delivers outstanding color depth with 1.07 billion colors, and the finest gradation, for re-creating smooth, precise, and vivid image. Enjoy accurate and true-to-life visuals whether gaming, watching videos, or working on color critical work with graphics applications.

### SmartContrast



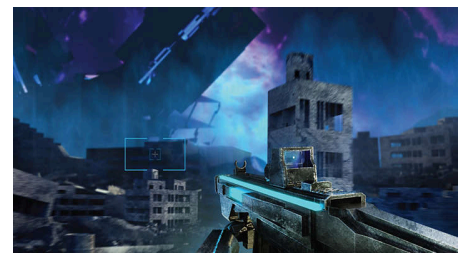
SmartContrast is a Philips technology that analyzes the contents you are displaying, automatically adjusting colors and controlling backlight intensity to dynamically enhance contrast for the best digital images and videos or when playing games where dark hues are displayed. When Economy mode is selected, contrast is adjusted and backlighting fine-tuned for just-right display of everyday office applications and lower power consumption.

### LowBlue mode & Flicker-free



Our LowBlue Mode and Flicker-free technology have been developed to reduce eye strain and fatigue often caused by long hours in front of a monitor.

### Smart Crosshair



Color of Crosshair is set by default. When Smart Crosshair is on, the color will change as complementary color to the background color. Smart Crosshair enhances the accuracy of aiming so you can spot the enemies more easily.



Dual Mode



Low Input Lag



Fast Response  
0.3ms



VESA CERTIFIED  
DisplayHDR 400



LowBlue Mode



Flicker-free

## Fast IPS Gaming monitor

DUAL resolution gaming monitor

27M2N5500XD/93

# Highlights

### Stark ShadowBoost



This feature enhances dark scenes without overexposing lightened areas. The Stark Shadowboost feature has three selectable levels that offer texturized images with better color saturation with higher contrast so you can see better in both light and dark environments. In addition, this feature helps you fine-tune your sight so that enemies get exposed more quickly when gaming.

### Smart Sniper



Smart Sniper gives you better control over your scope for precise aiming. It overlays an additional window at either the top or center of your screen, and enables you to select a zoom level up to 2.0x your normal magnification.

### Evnia Precision Center



Evnia Precision Center is an easy-to-use software designed to optimize and personalize your Evnia monitor. Whether you're a casual or competitive gamer, it offers a wide range of customization options to match your unique gaming style. With intuitive controls and seamless navigation, Evnia Precision Center gives you full control, providing everything you need to elevate your gaming to the next level—right at your fingertips.



# Fast IPS Gaming monitor

DUAL resolution gaming monitor

27M2N5500XD/93

## Specifications

### Picture/Display

**Panel Size:** 27 inch / 68.5 cm  
**Aspect ratio:** 16:9  
**LCD panel type:** Fast IPS  
**Backlight type:** W-LED system  
**Pixel pitch:** 0.2331 (H) mm x 0.2331 (V) mm  
**Brightness:** 350 (HDR Off) nit, 450 (HDR On) nit, 500 (HDR peak) nit  
**Display colors:** 1.07B (8bits+FRC)  
**Color gamut (typical):** DCI-P3: 96%, sRGB: 100%, NTSC 109%, Adobe RGB 107%\*  
**Contrast ratio (typical):** 2000:1  
**SmartContrast:** Mega Infinity DCR  
**Response time (typical):** 1 ms (Gray to Gray)\*  
**Viewing angle:** 178° (H) / 178° (V), @ C/R > 10  
**Picture enhancement:** SmartImage game  
**Maximum resolution:** 2560x1440 @ 540 Hz (by overclock, HDMI/DP), 1280x720 @ 1000Hz (HDMI/DP)  
**Effective viewing area:**  
596.763(H)x335.664(V)mm  
**Scanning Frequency:**  
30~510kHz(H)/48~500Hz(V) (@2560 x 1440) / 48~1000Hz (@1280 x 720) ;  
30~510kHz(H)/48~540Hz(V) (@2560 x 1440, overclock)  
**sRGB**  
**Delta E:** < 1 (sRGB)  
**Flicker-free**  
**Pixel Density:** 109 PPI  
**LowBlue Mode:** Yes\*  
**Display Screen Coating:** Anti-Glare, 3H, Haze 25%  
**SmartUniformity:** 93~105%  
**Low Input Lag**  
**EasyRead**  
**AMD FreeSync™ technology**  
**HDR:** HDR 400  
**Smart Sniper**  
**Shadow Boost**  
**Smart MBR Sync**  
**Stark Shadow Boost:** Yes\*  
**Smart MBR:** 0.3ms\*  
**Smart Crosshair**  
**SoftBlue technology:** Yes\*

### Connectivity

**Signal Input:** HDMI 2.1 x 2, DisplayPort 2.1 x 1  
**Audio (In/Out):** Headphone out  
**HDCP:** HDCP 1.4 (HDMI / DP), HDCP 2.3 (HDMI / DP)

### Convenience

**Plug & Play Compatibility:** DDC/CI, Mac OS, sRGB, Windows 11 / 10  
**User convenience:** Power On/Off, Menu/OK, Input/Up, Dual mode/Down, SmartImage game/Back  
**OSD Languages:** Brazil Portuguese, Czech, Dutch, English, Finnish, French, German, Greek, Hungarian, Italian, Japanese, Korean, Polish, Portuguese, Russian, Spanish, Simplified Chinese, Swedish, Turkish, Traditional Chinese, Ukrainian  
**Other convenience:** Kensington lock, VESA mount (100x100mm), LowBlue Mode  
**Control software:** Evnia Precision Center  
**MultiView**

### Stand

**Height adjustment:** 130 mm  
**Pivot:** -/+ 90 degree  
**Swivel:** -/+ 30 degree  
**Tilt:** -5/20 degree

### Power

**Power supply:** Internal, 100-240VAC, 50-60Hz  
**Off mode:** 0.3 W (typ.)  
**On mode:** 28.54 W (typ.)  
**Standby mode:** 0.5 W (typ.)  
**Power LED indicator:** Operation - White, Standby mode- White (blinking)

### Dimensions

**Packaging in mm (WxHxD):** 730 x 455 x 139 mm  
**Product without stand (mm):** 614 x 368 x 85 mm  
**Product with stand(max height):** 614 x 519 x 261 mm

### Weight

**Product with packaging (kg):** 8.41 kg  
**Product with stand (kg):** 5.68 kg  
**Product without stand (kg):** 4.26 kg

### Operating conditions

**Altitude:** Operation: +12,000ft (3,658m), Non-operation: +40,000ft (12,192m)  
**Temperature range (operation):** 0°C to 40 °C  
**MTBF:** 50,000 (Excluded backlight) hour(s)  
**Relative humidity:** 20%-80 %  
**Temperature range (storage):** -20°C to 60 °C

### Sustainability

**Environmental and energy:** RoHS  
**Recyclable packaging material:** 100 %  
**Specific Substances:** PVC / BFR free housing  
**Post consumer recycled plastics:** 85%\*

### Compliance and standards

**Regulatory Approvals:** CB, CE Mark, PSB, CEL, CCC, CECP, UKCA, EMF, FCC, ICES-003

### Cabinet

**Color:** Dark Slate  
**Finish:** Textured

### Design

Designed in Amsterdam, NL



\* "IPS" word mark / trademark and related patents on technologies belong to their respective owners.  
\* For best output performance, please always ensure that your graphic card is capable of achieving the maximum resolution and refresh rate of this Philips display.  
\* Response time value equal to SmartResponse  
\* Smart MBR is to adjust brightness for blur reduction, so cannot adjust brightness while Smart MBR is turned on. To reduce motion blur, LED backlight will strobe synchronously with screen refresh, which may cause noticeable brightness change.  
\* Smart MBR is gaming-optimized mode. Turn on Smart MBR may cause noticeable screen flickering. It is recommended to turn off when you are not using the gaming function.  
\* Stark Shadow Boost cannot be activated while Low Input Lag is enabled.  
\* Low blue light compliance: The ratio of display emission light in the range from 415 - 455 nm to the display emission of 400 - 500 nm shall be less than 50%.  
\* DCI-P3 Coverage based on CIE1976, sRGB Coverage based on CIE1931, NTSC Area and Adobe RGB Area based on CIE1976.  
\* This monitor strives for sustainability: the monitor's chassis is made up of 85% post-consumer recycled plastic.  
\* The products and accessories listed on this leaflet may differ by country and region.  
\* The monitor may look different from feature images.