

PHILIPS

NORELCO



24in 1 trimmer

All-in-One Trimmer 9000 Series

24in1: face, head & body

Premium precision comb

Self-sharpening steel blades

BeardSense technology



MG9570/49

Stainless steel precision

For face, hair and body

Our All-in-One trimmer offers the versatility and precision you need with 24 quality tools designed for face, head and body. Self-sharpening blades stay as sharp as day 1 and the premium precision comb helps achieve look and style you want.

Ultimate precision for an even trim

- Get the details right
- Trim body hair comfortably, even in sensitive areas
- Achieve your hairstyle in less time

Versatile styling for face, head and body

- Powerful trimming even on the most demanding of beards
- An even trim at a precise length for your perfect look
- 24 tools for all your grooming needs
- Maximum precision with long-lasting performance
- Add sharp and even definition to your final look

Quality & Ease of use

- 100% showerproof for convenient grooming, wet or dry
- Stay aware for each shave and trim
- Powerful 10 week performance on a single charge
- All your grooming needs in one place, at home or on the go

All-in-One Trimmer 9000 Series

24in 1 trimmer

MG9570/49

Highlights

24in1 trimmer



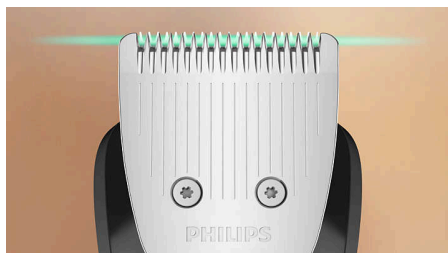
Our trimmer comes with 24 tools so you can trim and style your facial hair, clip your hair, and groom your body, conveniently covering all your grooming needs.

Premium precision comb



Our premium precision comb, with 11 length settings in 0.2 mm steps from 1 to 3 mm, delivers maximum precision to trim to the exact length you want for your perfect look.

Self-sharpening steel blades



Self-sharpening steel blades deliver added strength for maximum precision as you trim, staying as sharp as day 1 with no blade oil required.

BeardSense technology



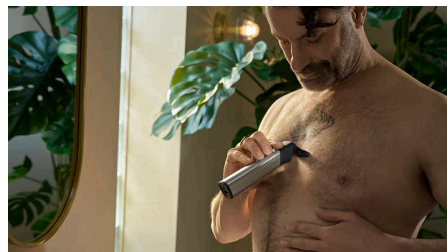
With BeardSense Technology, our trimmer scans your beard density 125x per second to boost power in denser areas, giving you the right power for the best result.

Precision beard styling



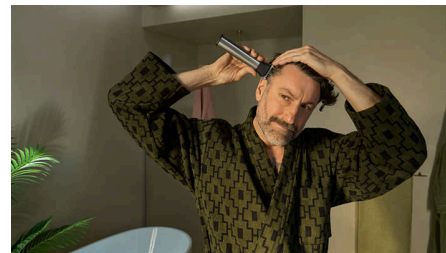
The trimmer's multi-comb set comes with 29 length settings from 0.5mm up to 16mm in precise up to 0.2mm increments, so you can style your beard long or short. The detail trimmer's narrow design also gives added precision to create sharp lines and fine details, while the metal trimmer cleans your cheeks, chin and neck to get your beard exactly how you like it.

Comfortable body grooming



The attachable body shaver allows you to shave comfortably below the neck, while the unique skin-protection system guards sensitive areas while you shave as close as 0.5 mm. You can also trim body hair with the two click-on combs.

Fast hair clipping



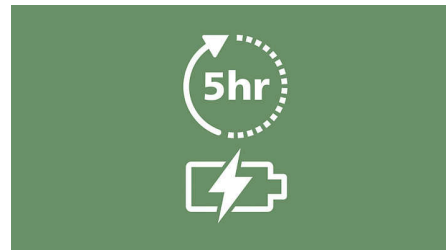
Thanks to the extra-wide 41mm stainless steel clipper which is designed to cut more with each stroke, you can now trim your hair 30% faster.*** Versatile and easy to use, you can perfect your look using the adjustable length settings with the 2mm, 4mm, 9mm, 12mm, and 16mm wide combs.

Nose/ear/eyebrow trimming



The nose/ear trimmer attachment removes unwanted nose and ear hair quickly and safely. Easily keep your eyebrows neat and tidy with the dedicated eyebrow comb.

Up to 5 hours of runtime



Our durable lithium ion battery delivers up to 5 hours of runtime with 5-minute quick charge option**, for a powerful, continual trimming experience.

All-in-One Trimmer 9000 Series

24in 1 trimmer

MG9570/49

Highlights

100% showerproof



Being 100% showerproof you can use the trimmer both wet and dry for a comfortable, convenient experience, every time. Plus it's easy to clean too.

Battery life indicator



The battery indicator keeps you fully informed of your battery status, whether it's low, empty, fully charged, or still charging, ensuring you're always ready for your next grooming session.

Premium ergonomic grip



The premium stainless steel trimmer is easy to hold and maneuver with an ergonomic rubber grip for superior comfort and control.

Premium toiletry bag



Keep all your attachments in the premium travel and storage pouch for easy organization, whether you're at home or on the go.

Specifications

Accessories

Convenience: Cleaning brush, USB-A (no adapter included), Styling comb

Travel and storage: Premium toiletry bag

Power

Run time: 5 hours

Charging: 3 hours, USB-A Charging (5 V[~] / ≥1 A), 5 min quick charge

Battery type: Lithium Li-Ion

Battery status: Charging indicator, Low battery indicator

Design

Handle: Ergonomic rubber grip, Stainless steel body

Service

Warranty: Up to 5 years****

Ease of use

Wet & Dry: 100% shower proof

Travel solution: Travel lock attachment

Summary

Body area: Face, Hair & Body

Tools & accessories: 24

Length settings: 0.5 – 16 mm, 29

Precision steps: Control up to 0.2mm

Styling tools

Specialized: Metal trimmer, Nose trimmer, Detail trimmer, Wide hair clipper, Body trimmer, Self-sharpening blades, BeardSense technology, Premium precision comb

Combs

Adjustable: 3-7mm

Hair: 4mm, 9mm, 12mm, 16mm

Body: 3mm, 5mm

Stubble: 1mm, 2mm

Eyebrow: 6mm

Premium precision comb: 1-3 mm

Face: SkinProtect comb

Fading hair: 41mm L, 41mm R

