

PHILIPS

EVNIA



QD OLED gaming
monitor

QHD Gaming monitor

Evnia 6000

26.5" (67.3cm)

2560 x 1440 (Quad HD)



27M2N6501L

Your gaming experience to the utmost

This monitor is built for gaming at high speeds. Its 240Hz refresh rates and QD OLED panel make it a combination of incredible speed and premium picture quality.

Features designed for gamers needs

- Stark ShadowBoost: for enhancing visibility in dark scenes
- Protects and cools for lasting color clarity
- Evnia Precision Center: Maximize Your Gaming Experience
- AI-enhanced Ambiglow: for intensified entertainment
- Smart Sniper: Improved control when you zoom in on targets
- MultiView enables simultaneous dual connection and view
- Smart Crosshair: for better aim and more fun

Built for fast action

- AMD FreeSync™ Premium; tear free, stutter free, fluid gaming
- Ultra-fast 240 Hz refresh rate for virtually lag-free gaming

Immersive visuals

- High Dynamic Range (HDR) for more lifelike colorful visuals
- Crystalclear images with Quad HD 2560 x 1440 pixels
- True 10-bit display reproduces smoother gradients on visuals

QHD Gaming monitor

QD OLED gaming monitor

27M2N6501L/61

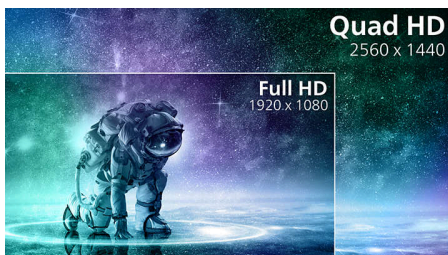
Highlights

Ultra-fast 240 Hz refresh rate



While playing the most intense engaging action-oriented games, ultra-fast 240 Hz refresh rate enhances an ultra-smooth, lag-free gaming experience. This Philips display redraws the screen image up-to 240 times per second, effectively faster than a standard display. Especially for fast-paced games like FPS and racing games, 240 Hz gives a superior motion and clarity visuals. With Philips 240 Hz display, action sequences in gameplay look judder-free and ghost-free. You will experience deeper immersion and feeling alive in game.

Crystalclear images



These Philips screens deliver Crystalclear, Quad HD 2560x1440 or 2560x1080 pixel images. Utilizing high performance panels with high density pixel count, enabled by high bandwidth sources, these new displays will make your images and graphics come alive. Whether you are demanding professional requiring extremely detailed information for CAD-CAM solutions, using 3D graphic applications or a financial wizard working on huge spreadsheets, Philips displays will give you Crystalclear images.

High Dynamic Range (HDR)



High Dynamic Range delivers a dramatically different visual experience. With astonishing brightness, incomparable contrast and captivating color, images come to life with much greater brightness while also featuring much deeper, more nuanced darks. It renders a fuller palette of rich new colors never before seen on display, giving you a visual experience that engages your senses and inspires emotions.

True 10-bit color depth



With this Philips true 10-bit color display, you can see color critical professional work of exceptional color accuracy and meeting professional standards. Compared with conventional 8-bit color display, this Philips monitor produces a more natural transition between hues for smoother gradients.

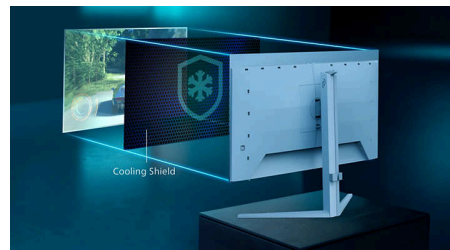
QD OLED technology



QD-OLED represents a hybrid approach that marries the OLED panels and quantum dot technology. By combining what's best of both,

QD-OLED guarantees high contrast, deep blacks, and unlimited viewing angles, with the higher peak brightness and more vibrant colors.

Cooling shield



Defend your QD-OLED display's true colors from fading over time. To increase the lifespan of your display, this monitor has an integrated graphene shield which keeps your display cool. The graphene preserves display integrity by evenly dispersing heat generated by the blue light emitted from your screen, and cooling more effectively than graphite. For gamers, this means you can play with confidence that the colors in your game will remain pixel-perfect.

AI-enhanced Ambiglow



Our AI-enhanced processor analyzes the incoming image content and continuously adapts the color and brightness of the emitted light to match the image. This feature adds a new dimension to your viewing experience. The innovative Ambiglow uses its AI capabilities to create a truly immersive and customizable gaming experience. From filling your gaming room with color to feeling like you are part of the game, the AI-enhanced Ambiglow is made to make your gaming experience the best it's ever been by combining intelligence, color, and light.



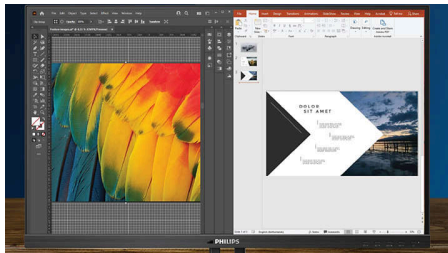
QHD Gaming monitor

QD OLED gaming monitor

27M2N6501L/61

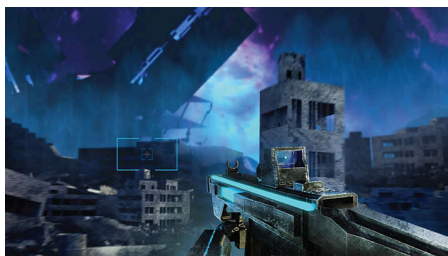
Highlights

MultiView technology



With the ultra-high resolution Philips MultiView display you can now experience a world of connectivity. MultiView enables active dual connect and view so that you can work with multiple devices like a PC and notebook simultaneously, for complex multi-tasking.

Smart Crosshair



Color of Crosshair is set by default. When Smart Crosshair is on, the color will change as complementary color to the background color. Smart Crosshair enhances the accuracy of aiming so you can spot the enemies more easily.

Stark ShadowBoost



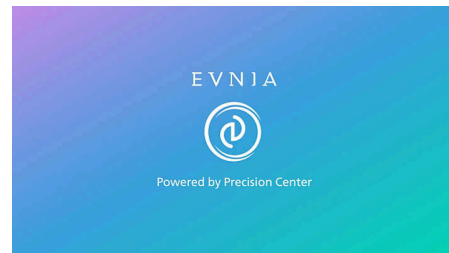
This feature enhances dark scenes without overexposing lightened areas. The Stark Shadowboost feature has three selectable levels that offer texturized images with better color saturation with higher contrast so you can see better in both light and dark environments. In addition, this feature helps you fine-tune your sight so that enemies get exposed more quickly when gaming.

Smart Sniper



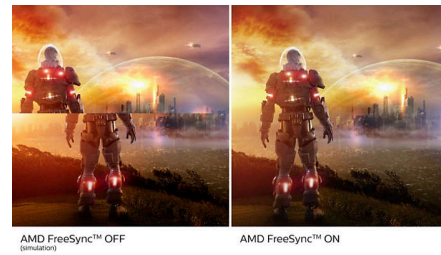
Smart Sniper gives you better control over your scope for precise aiming. It overlays an additional window at either the top or center of your screen, and enables you to select a zoom level up to 2.0x your normal magnification.

Evnia Precision Center



Evnia Precision Center is an easy-to-use software designed to optimize and personalize your Evnia monitor. Whether you're a casual or competitive gamer, it offers a wide range of customization options to match your unique gaming style. With intuitive controls and seamless navigation, Evnia Precision Center gives you full control, providing everything you need to elevate your gaming to the next level—right at your fingertips.

AMD FreeSync™ Premium



Gaming shouldn't be a choice between choppy gameplay or broken frames. AMD FreeSync™ Premium equips serious gamers with a fluid, tear-free gameplay experience at peak performance. There are no compromises, game confidently with a high refresh rate, low framerate compensation, and low latency.



Flicker-free

Specifications

Picture/Display

Panel Size: 26.5"/67.3cm
Aspect ratio: 16:9
Monitor Panel Type: QD OLED
Pixel pitch: 0.2292 x 0.2292 mm
Brightness: SDR: 200 (APL 100%) nit, HDR: 400nits (APL 10%) nit
Display colors: 1.07B (10bits)
Color gamut (typical): Adobe RGB 98%; DCI-P3:99%, sRGB: 147.5%, NTSC 120%.*
Contrast ratio (typical): 1.5M:1
SmartContrast: Mega Infinity DCR
Response time (typical): 0.03ms (Gray to Gray)*
Viewing angle: 178° (H) / 178° (V), @ C/R > 10000
Picture enhancement: SmartImage game
Maximum resolution: 2560x1440 @ 240 Hz (DP/HDMI)
Effective viewing area: 590.42(H) x 333.72(V) mm
Scanning Frequency: 30k-390kHz(H)/ 48-240Hz(V)
sRGB
Delta E: < 2 (sRGB)
Flicker-free
Pixel Density: 111 PPI
Display Screen Coating: Anti-reflection, 2H
Low Input Lag
EasyRead
AMD FreeSync™ technology
G-SYNC
HDR: HDR 10
Pixel format: RGB Q-Stripe*
Smart Crosshair
Stark ShadowBoost
Smart Sniper
Clear MR Tier: 13000
Shadow Boost
SoftBlue technology: Yes*

Connectivity

Signal Input: HDMI 2.1 x 2, DisplayPort 1.4 x 1
Audio (In/Out): Headphone out
HDCP: HDCP 1.4 (HDMI / DisplayPort), HDCP 2.3 (HDMI / DisplayPort)
USB Hub: USB 3.2 Gen 1 / 5 Gbps, USB-B upstream x 1, USB-A downstream x 2 (with 1 for fast charge)

Convenience

Plug & Play Compatibility: DDC/CI, Mac OS, sRGB, Windows 11 / 10
User convenience: Power On/Off, Menu/OK, Input/Up, Game Settings/Down, SmartImage game/Back
OSD Languages: Brazil Portuguese, Czech, Dutch, English, Finnish, French, German, Greek, Hungarian, Italian, Japanese, Korean, Polish, Portuguese, Russian, Spanish, Simplified Chinese, Swedish, Turkish, Traditional Chinese, Ukrainian
Other convenience: Kensington lock, VESA mount (100x100mm), LowBlue Mode
MultiView
Ambiglow: Ambiglow 3 sided

Stand

Height adjustment: 130 mm
Pivot: +90
Swivel: -/+ 30 degree
Tilt: -5/20 degree

Power

Power supply: Internal, 100-240VAC, 50-60Hz
Off mode: 0.3 W (typ.)
On mode: 61.3 W (typ.)
Standby mode: 0.5 W (typ.)
Power LED indicator: Operation - White, Standby mode- White (blinking)

Dimensions

Packaging in mm (WxHxD): 730 x 445 x 139 mm
Product without stand (mm): 609 x 355 x 61 mm
Product with stand(max height): 609 x 531 x 261 mm

Weight

Product with packaging (kg): 8.89 kg
Product with stand (kg): 5.98 kg
Product without stand (kg): 4.19 kg

Operating conditions

Altitude: Operation: +12,000ft (3,658m), Non-operation: +40,000ft (12,192m)
Temperature range (operation): 0°C to 40 °C
MTBF: 30,000 (Excluded backlight) hour(s)
Relative humidity: 20%-80 %
Temperature range (storage): -20°C to 60 °C

Sustainability

Environmental and energy: RoHS
Recyclable packaging material: 100 %
Post consumer recycled plastics: 35%*

Compliance and standards

Regulatory Approvals: CB, CE Mark, TUV/ISO9241-307, TUV-BAUART, EAC, EAC ROHS, MEPS, PSB, KC, KCC, CEL, CCC, CECP, BSMI, UKCA, EMF, FCC, ICES-003

Cabinet

Color: White
Finish: Textured

* For best output performance, please always ensure that your graphic card is capable of achieving the maximum resolution and refresh rate of this Philips display.
 * Low blue light compliance: The ratio of display emission light in the range from 415 - 455 nm to the display emission of 400 - 500 nm shall be less than 50%.
 * Adobe RGB and DCI-P3 Coverage based on CIE1976, sRGB Area based on CIE1931, NTSC Area based on CIE1976.
 * Response time value equal to SmartResponse. The measurement pattern is 1 horizontal line.
 * Active pixels: 2560(H) x 1440(V) Number of total pixels: 2576(H) x 1456(V); extra pixels on each side, space reserved for pixel orbiting.
 * NVIDIA® G-SYNC® support interface: DisplayPort
 * Make sure to update NVIDIA® G-SYNC® driver to the latest version, see more information on NVIDIA website: <https://www.nvidia.com/>
 * Make sure your graphic card supports NVIDIA® G-SYNC®
 * 2020 Advanced Micro Devices, Inc. All rights reserved. AMD, the AMD Arrow logo, AMD FreeSync™ and combinations thereof are trademarks of Advanced Micro Devices, Inc. Other product names used in this publication are for identification purposes only and may be trademarks of their respective companies.
 * This monitor strives for sustainability: the stand's feet and headphone holder are made with 35% recycled plastic.
 * The monitor may look different from feature images.
 * The products and accessories listed on this leaflet may differ by country and region.

